

Converting Colors

RGB(229, 149, 159)

Have a look what the booklet for
RGB(229, 149, 159) contains.

RGB(229, 149, 159)	3
<i>Conversions</i>	4
<i>Details</i>	6
<i>Harmonies</i>	11
<i>Previews</i>	23
<i>Color Blindness Simulation</i>	26
<i>CSS Examples</i>	29

Color

RGB(229, 149, 159)

Conversions

Conversions Part 1

Format	Color
Hex	E5959F
RGB	229, 149, 159
RGB Percent	90%, 58%, 62%
CMY	0.1020, 0.4157, 0.3765
CMYK	0.00, 0.35, 0.31, 0.10
HSL	352°, 61%, 74%
HSV	352°, 35%, 90%
XYZ	49.3186, 40.6561, 38.0489
YIQ	174.0600, 44.4700, 20.0700

Conversions

Conversions Part 2

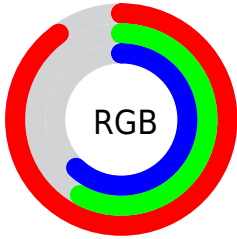
Format	Color
R _Y B	229, 149, 159
Decimal	15046047
CIE Lab	69.93, 31.38, 7.29
CIE LCh	70, 32.215, 13.080
Yxy	40.6561, 0.3852, 0.3176
Android (android.graphics.Color)	4293236127 (0xFFE5959F)
YUV	174.0600, -7.4246, 48.1824
Hunter-Lab	63.7621, 26.4819, 9.2532

Details

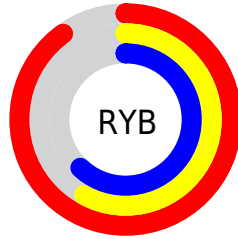
The RGB color **229, 149, 159** is a light color, and the websafe version is hex **FF9999**. A complement of this color would be **149, 229, 219**, and the grayscale version is **174, 174, 174**.

A 20% lighter version of the original color is **255, 204, 214**, and **172, 97, 108** is the 20% darker color. If you saturate the color by 10%, you get **229, 126, 139**, and if you desaturate by 10%, it is **229, 172, 179**.

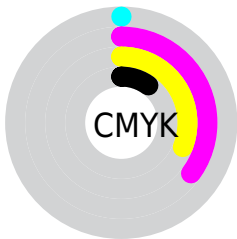
Distribution



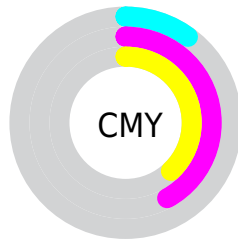
- Red (90%)
- Green (58%)
- Blue (62%)



- Red (90%)
- Yellow (58%)
- Blue (62%)



- Cyan (0%)
- Magenta (35%)
- Yellow (31%)
- Black (10%)



- Cyan (10%)
- Magenta (42%)
- Yellow (38%)

Brightness & Saturation Gradients

These gradients show how the RGB color 229, 149, 159 changes by changing the brightness by 10 percent. The first figure shows a shift by +10% for each color and the second figure -10%.

Similar to the brightness gradients but the following saturation gradients show a change of the RGB color 229, 149, 159 by changing the saturation by 10% instead.

 229, 149, 159

 229, 149, 159

255, 255, 255

 200, 123, 133

 255, 204, 214

 172, 97, 108

 255, 232, 242

 144, 72, 84

 117, 48, 61

 90, 24, 39

 64, 0, 18

 43, 0, 1

 0, 0, 0

 229, 149, 159

 229, 149, 159

■ 229, 126, 139

■ 229, 172, 179

■ 229, 103, 119

■ 229, 195, 199

■ 229, 80, 99

■ 229, 218, 219

■ 229, 57, 79

■ 229, 241, 239

■ 229, 35, 59

■ 229, 255, 255

■ 229, 12, 39

■ 229, 0, 29

Harmonies

Analogous

The Analogous color harmony consists of three colors that are next to each other on the color wheel.



218, 151, 189



229, 149, 159



224, 154, 132

Triad

The Triadic color harmony groups three colors that are evenly spaced from another and form a triangle on the color wheel.



229, 149, 159



146, 181, 127



106, 179, 226

Complementary

The Complementary color scheme is a pair of colors which are on the opposite of each other on the color wheel.



229, 149, 159



149, 229, 219

Split Complementary

Split-complementary colors differ from the complementary color scheme. The scheme consists of three colors, the original color and two neighbors of the complement color.



74, 185, 210



229, 149, 159



111, 186, 153

Square

The Square scheme is like the rectangle color scheme, but the four colors are evenly spaced on the color wheel.



229, 149, 159



178, 173, 113



80, 187, 183



151, 169, 228

Rectangle

The Rectangle color scheme consists of four colors that form a rectangle on the color wheel.



229, 149, 159



213, 160, 120



80, 187, 183



93, 181, 222

Sweetspot

The Sweet Spot groups the original color and five complimentary colors.



229, 149, 159



255, 230, 233



218, 149, 229



128, 112, 114



0, 0, 0



128, 128, 128

Same Dimension

The Same Dimension uses a secret algorithm to generate beautiful new colors.



229, 149, 159



255, 148, 161



229, 178, 149



115, 103, 105



179, 0, 22



51, 0, 6

Inverse Universe

The Inverse Universe completely reimagines the original color for something new.



229, 149, 159



255, 148, 161



149, 200, 229



115, 103, 105



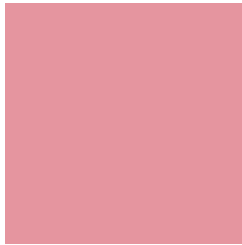
179, 0, 22



51, 0, 6

Previews

White Background



This preview shows how the RGB color 229, 149, 159 looks on a white background.

Color Contrast Check

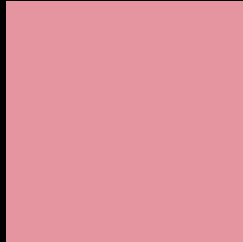
Large Text (above 18pt) WCAG AA × Fail

Any Text WCAG AA × Fail

Large Text (above 18pt) WCAG AAA × Fail

Any Text WCAG AAA × Fail

Black Background



This preview shows how the RGB color 229, 149, 159 looks on a black background.

Color Contrast Check

Large Text (above 18pt) WCAG AA ✓ Pass

Any Text WCAG AA ✓ Pass

Large Text (above 18pt) WCAG AAA ✓ Pass

Any Text WCAG AAA ✓ Pass

If you want to check with other color combinations, try the [Color Contrast Checker](#).

RGB 229, 149, 159 Background



This preview shows how black text looks on a background with the RGB color 229, 149, 159.



This preview shows how white text looks on a background with the RGB color 229, 149, 159.

Color Blindness Simulation

Color vision deficiency is a very complex topic, and I could not describe the different causes any better than Wikipedia does, so if you want to learn more, you should check out their [article about color blindness](#).

Dichromacy



Original Color
229, 149, 159

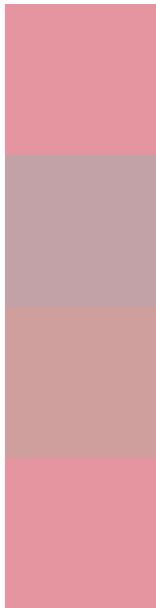
Protanopia
174, 170, 171

Deuteranopia
193, 165, 156



Tritanopia
229, 149, 160

Trichromacy



Original Color

229, 149, 159

Protanomaly

194, 162, 167

Deuteranomaly

206, 159, 157

Tritanomaly

229, 149, 160

Monochromacy



Original Color

229, 149, 159

Achromatopsia

174, 174, 174

Achromatomaly

194, 165, 169

CSS Examples

Text

The CSS property to change the color of the text to RGB 229, 149, 159 is called "color". The color property can be set on classes, ids or directly on the HTML element.

This example shows how text in the color `rgb(229, 149, 159)` looks like.

```
.text, #text, p{  
    color:rgb(229, 149, 159)  
}
```

If you want to add a text shadow in that color use the text-shadow property, you can generate a text shadow directly with our [CSS Text Shadow Generator](#).

Here you see how black text with a 4 pixel rgb(229, 149, 159) colored shadow looks like.

```
.shadow{ text-shadow: 4px 4px 2px rgb(229, 149, 159) }
```

Border

The CSS property to change the border of an element to RGB 229, 149, 159 is called "border". The border property can be set on classes, ids or directly on the HTML element.

This example shows the color as border, it can be applied via the CSS property "border" or "border-color".

```
.border, #border, table{ border:4px solid rgb(229, 149, 159) }
```

If only the border color should be changed use the property `border-color`.

```
.border{ border-color:rgb(229, 149, 159) }
```

If you want to add a box shadow in that color use:

Here you see how a box with a 4 pixel `rgb(229, 149, 159)` colored shadow looks like.

```
.boxshadow{ -moz-box-shadow:4px 4px 4px  
4px rgb(229, 149, 159); -webkit-box-  
shadow:4px 4px 4px 4px rgb(229, 149, 159);  
box-shadow:4px 4px 4px 4px rgb(229, 149,  
159) }
```

Background

The CSS property to change the background color of an element to RGB 229, 149, 159 is called "background". The background property can be set on classes, ids or directly on the HTML element.

```
.background, #background, body{  
background: rgb(229, 149, 159) }
```

If only the background color should be changed can be used:

```
.background{ background-color: rgb(229,  
149, 159) }
```

This example shows the color as background, it is applied via the CSS property "background".

To optimize and compress your CSS code, you can use our [online CSS compressor and optimizer](#) based on csstidy. If you want to create a linear or radial gradient as background or border, check our [CSS Gradient Generator](#).

Hey! You found this booklet interesting? Support Converting Colors with the new Membership Option!

The pro membership hides all ads, plus gives you double the colors in the color bucket, and more awesome pro features!

[Learn more, Memberships starting at \\$2.50/m!](#)

**Follow me
on Twitter!**

@ConvertingColor