

Converting Colors

RGB(229, 156, 175)

Have a look what the booklet for
RGB(229, 156, 175) contains.

RGB(229, 156, 175)	3
<i>Conversions</i>	4
<i>Details</i>	6
<i>Harmonies</i>	11
<i>Previews</i>	23
<i>Color Blindness Simulation</i>	26
<i>CSS Examples</i>	29

Color

RGB(229, 156, 175)

Conversions

Conversions Part 1

Format	Color
Hex	E59CAF
RGB	229, 156, 175
RGB Percent	90%, 61%, 69%
CMY	0.1020, 0.3882, 0.3137
CMYK	0.00, 0.32, 0.24, 0.10
HSL	344°, 58%, 75%
HSV	344°, 32%, 90%
XYZ	51.9394, 43.5301, 46.2221
YIQ	179.9930, 37.4090, 21.3850

Conversions

Conversions Part 2

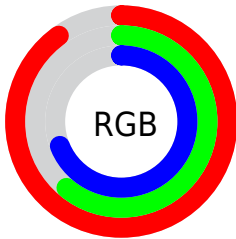
Format	Color
RYB	229, 156, 175
Decimal	15047855
CIELab	71.91, 29.84, 1.26
CIELCh	72, 29.870, 2.423
Yxy	43.5301, 0.3666, 0.3072
Android (android.graphics.Color)	4293237935 (0xFFE59CAF)
YUV	179.9930, -2.4615, 42.9791
Hunter-Lab	65.9773, 25.0605, 4.6470

Details

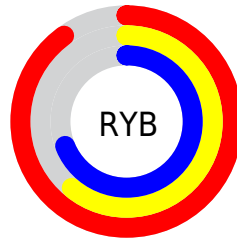
The RGB color **229, 156, 175** is a light color, and the websafe version is hex **CC9999**. A complement of this color would be **156, 229, 210**, and the grayscale version is **180, 180, 180**.

A 20% lighter version of the original color is **255, 211, 230**, and **172, 104, 123** is the 20% darker color. If you saturate the color by 10%, you get **229, 133, 158**, and if you desaturate by 10%, it is **229, 179, 192**.

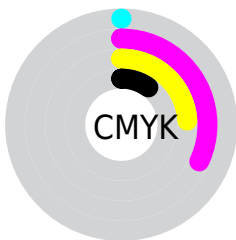
Distribution



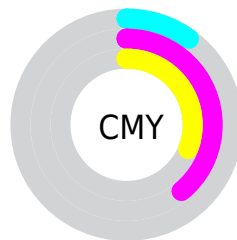
- Red (90%)
- Green (61%)
- Blue (69%)



- Red (90%)
- Yellow (61%)
- Blue (69%)



- Cyan (0%)
- Magenta (32%)
- Yellow (24%)
- Black (10%)



- Cyan (10%)
- Magenta (39%)
- Yellow (31%)

Brightness & Saturation Gradients

These gradients show how the RGB color 229, 156, 175 changes by changing the brightness by 10 percent. The first figure shows a shift by +10% for each color and the second figure -10%.

Similar to the brightness gradients but the following saturation gradients show a change of the RGB color 229, 156, 175 by changing the saturation by 10% instead.


 229, 156, 175

 229, 156, 175

255, 255, 255

 200, 130, 148

 255, 211, 230

 172, 104, 123

 255, 240, 255

 145, 79, 98

 118, 55, 74

 92, 31, 52

 66, 6, 31

 45, 0, 5


 0, 0, 0

 229, 156, 175

 229, 156, 175

 229, 133, 158

 229, 179, 192

 229, 110, 141

 229, 202, 209

 229, 87, 124

 229, 225, 226

 229, 64, 107

 229, 248, 243

 229, 42, 90

 229, 255, 255

 229, 19, 73

 229, 0, 60

Harmonies

Analogous

The Analogous color harmony consists of three colors that are next to each other on the color wheel.



213, 160, 202



229, 156, 175



230, 158, 148

Triad

The Triadic color harmony groups three colors that are evenly spaced from another and form a triangle on the color wheel.



229, 156, 175



164, 183, 130



107, 186, 224

Complementary

The Complementary color scheme is a pair of colors which are on the opposite of each other on the color wheel.



229, 156, 175



156, 229, 210

Split Complementary

Split-complementary colors differ from the complementary color scheme. The scheme consists of three colors, the original color and two neighbors of the complement color.



90, 190, 204



229, 156, 175



132, 189, 150

Square

The Square scheme is like the rectangle color scheme, but the four colors are evenly spaced on the color wheel.



229, 156, 175



193, 175, 122



103, 191, 178



144, 178, 230

Rectangle

The Rectangle color scheme consists of four colors that form a rectangle on the color wheel.



229, 156, 175



222, 163, 134



103, 191, 178



98, 188, 219

Sweetspot

The Sweet Spot groups the original color and five complimentary colors.



229, 156, 175



255, 230, 236



210, 156, 229



128, 112, 116



0, 0, 0



128, 128, 128

Same Dimension

The Same Dimension uses a secret algorithm to generate beautiful new colors.



229, 156, 175



255, 158, 183



229, 173, 156



115, 103, 106



179, 0, 46



51, 0, 13

Inverse Universe

The Inverse Universe completely reimagines the original color for something new.



229, 156, 175



255, 158, 183



156, 212, 229



115, 103, 106



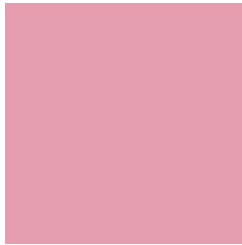
179, 0, 46



51, 0, 13

Previews

White Background



This preview shows how the RGB color 229, 156, 175 looks on a white background.

Color Contrast Check

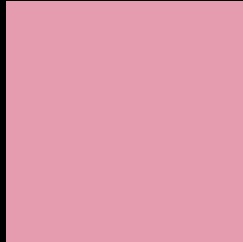
Large Text (above 18pt) WCAG AA × Fail

Any Text WCAG AA × Fail

Large Text (above 18pt) WCAG AAA × Fail

Any Text WCAG AAA × Fail

Black Background



This preview shows how the RGB color 229, 156, 175 looks on a black background.

Color Contrast Check

Large Text (above 18pt) WCAG AA ✓ Pass

Any Text WCAG AA ✓ Pass

Large Text (above 18pt) WCAG AAA ✓ Pass

Any Text WCAG AAA ✓ Pass

If you want to check with other color combinations, try the [Color Contrast Checker](#).

RGB 229, 156, 175 Background



This preview shows how black text looks on a background with the RGB color 229, 156, 175.



This preview shows how white text looks on a background with the RGB color 229, 156, 175.

Color Blindness Simulation

Color vision deficiency is a very complex topic, and I could not describe the different causes any better than Wikipedia does, so if you want to learn more, you should check out their [article about color blindness](#).

Dichromacy



Original Color
229, 156, 175

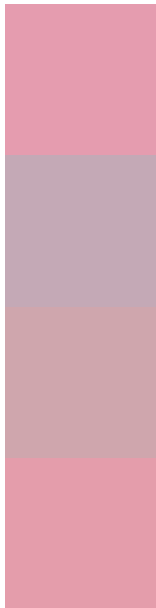
Protanopia
177, 176, 186

Deuteranopia
195, 171, 172



Tritanopia
228, 157, 169

Trichromacy



Original Color
229, 156, 175

Protanomaly
196, 169, 182

Deuteranomaly
207, 166, 173

Tritanomaly
228, 157, 171

Monochromacy



Original Color
229, 156, 175

Achromatopsia
180, 180, 180

Achromatomaly
198, 171, 178

CSS Examples

Text

The CSS property to change the color of the text to RGB 229, 156, 175 is called "color". The color property can be set on classes, ids or directly on the HTML element.

This example shows how text in the color `rgb(229, 156, 175)` looks like.

```
.text, #text, p{  
    color:rgb(229, 156, 175)  
}
```

If you want to add a text shadow in that color use the text-shadow property, you can generate a text shadow directly with our [CSS Text Shadow Generator](#).

Here you see how black text with a 4 pixel rgb(229, 156, 175) colored shadow looks like.

```
.shadow{ text-shadow: 4px 4px 2px rgb(229, 156, 175) }
```

Border

The CSS property to change the border of an element to RGB 229, 156, 175 is called "border". The border property can be set on classes, ids or directly on the HTML element.

This example shows the color as border, it can be applied via the CSS property "border" or "border-color".

```
.border, #border, table{ border:4px solid rgb(229, 156, 175) }
```

If only the border color should be changed use the property `border-color`.

```
.border{ border-color:rgb(229, 156, 175) }
```

If you want to add a box shadow in that color use:

Here you see how a box with a 4 pixel `rgb(229, 156, 175)` colored shadow looks like.

```
.boxshadow{ -moz-box-shadow:4px 4px 4px  
4px rgb(229, 156, 175); -webkit-box-  
shadow:4px 4px 4px 4px rgb(229, 156, 175);  
box-shadow:4px 4px 4px 4px rgb(229, 156,  
175) }
```

Background

The CSS property to change the background color of an element to RGB 229, 156, 175 is called "background". The background property can be set on classes, ids or directly on the HTML element.

```
.background, #background, body{  
background: rgb(229, 156, 175) }
```

If only the background color should be changed can be used:

```
.background{ background-color: rgb(229,  
156, 175) }
```

This example shows the color as background, it is applied via the CSS property "background".

To optimize and compress your CSS code, you can use our [online CSS compressor and optimizer](#) based on csstidy. If you want to create a linear or radial gradient as background or border, check our [CSS Gradient Generator](#).

Hey! You found this booklet interesting? Support Converting Colors with the new Membership Option!

The pro membership hides all ads, plus gives you double the colors in the color bucket, and more awesome pro features!

[Learn more, Memberships starting at \\$2.50/m!](#)

**Follow me
on Twitter!**

@ConvertingColor