

Converting Colors

RGB(229, 187, 177)

Have a look what the booklet for
RGB(229, 187, 177) contains.

RGB(229, 187, 177)	3
<i>Conversions</i>	4
<i>Details</i>	6
<i>Harmonies</i>	11
<i>Previews</i>	23
<i>Color Blindness Simulation</i>	26
<i>CSS Examples</i>	29

Color

RGB(229, 187, 177)

Conversions

Conversions Part 1

Format	Color
Hex	E5BBB1
RGB	229, 187, 177
RGB Percent	90%, 73%, 69%
CMY	0.1020, 0.2667, 0.3059
CMYK	0.00, 0.18, 0.23, 0.10
HSL	12°, 50%, 80%
HSV	12°, 23%, 90%
XYZ	58.0192, 55.3730, 49.2251
YIQ	198.4180, 28.2420, 5.7940

Conversions

Conversions Part 2

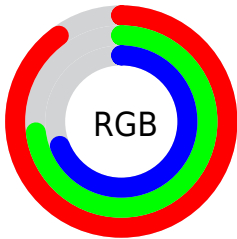
Format	Color
R _Y B	229, 189, 177
Decimal	15055793
CIE Lab	79.26, 13.56, 10.73
CIE LCh	79, 17.295, 38.366
Yxy	55.3730, 0.3568, 0.3405
Android (android.graphics.Color)	4293245873 (0xFFE5BBB1)
YUV	198.4180, -10.5591, 26.8204
Hunter-Lab	74.4130, 8.9522, 12.8681

Details

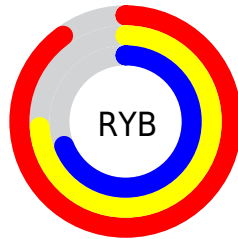
The RGB color **229, 187, 177** is a light color, and the websafe version is hex **FFCCCC**. A complement of this color would be **177, 219, 229**, and the grayscale version is **199, 199, 199**.

A 20% lighter version of the original color is **255, 243, 233**, and **173, 134, 124** is the 20% darker color. If you saturate the color by 10%, you get **229, 169, 154**, and if you desaturate by 10%, it is **229, 205, 200**.

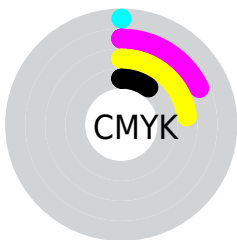
Distribution



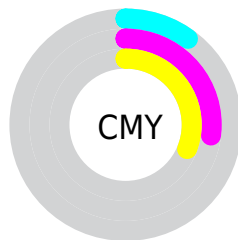
- Red (90%)
- Green (73%)
- Blue (69%)



- Red (90%)
- Yellow (74%)
- Blue (69%)



- Cyan (0%)
- Magenta (18%)
- Yellow (23%)
- Black (10%)



- Cyan (10%)
- Magenta (27%)
- Yellow (31%)

Brightness & Saturation Gradients


These gradients show how the RGB color 229, 187, 177 changes by changing the brightness by 10 percent. The first figure shows a shift by +10% for each color and the second figure -10%.


Similar to the brightness gradients but the following saturation gradients show a change of the RGB color 229, 187, 177 by changing the saturation by 10% instead.

 229, 187, 177

255, 255, 255

 255, 243, 233

 229, 187, 177

 201, 160, 150

 173, 134, 124

 146, 108, 100

 119, 84, 76

 94, 61, 53

 69, 39, 32


 46, 18, 8

 22, 0, 0


 0, 0, 0

 229, 187, 177

 229, 187, 177

 229, 169, 154

 229, 205, 200

 229, 150, 131

 229, 224, 223

 229, 132, 108

 229, 242, 246

 229, 113, 85

 229, 255, 255

 229, 95, 63

 229, 76, 40

 229, 58, 17

 229, 44, 0

Harmonies

Analogous

The Analogous color harmony consists of three colors that are next to each other on the color wheel.



230, 185, 192



229, 187, 177



220, 191, 167

Triad

The Triadic color harmony groups three colors that are evenly spaced from another and form a triangle on the color wheel.



229, 187, 177



169, 205, 184



184, 196, 228

Complementary

The Complementary color scheme is a pair of colors which are on the opposite of each other on the color wheel.



229, 187, 177



177, 219, 229

Split Complementary

Split-complementary colors differ from the complementary color scheme. The scheme consists of three colors, the original color and two neighbors of the complement color.



165, 201, 226



229, 187, 177



157, 206, 200

Square

The Square scheme is like the rectangle color scheme, but the four colors are evenly spaced on the color wheel.



229, 187, 177



186, 201, 171



155, 205, 216



205, 191, 222

Rectangle

The Rectangle color scheme consists of four colors that form a rectangle on the color wheel.



229, 187, 177



210, 195, 164



155, 205, 216



177, 198, 228

Sweetspot

The Sweet Spot groups the original color and five complimentary colors.



229, 187, 177



255, 241, 237



229, 177, 219



128, 119, 117



0, 0, 0



128, 128, 128

Same Dimension

The Same Dimension uses a secret algorithm to generate beautiful new colors.



229, 187, 177



255, 199, 186



229, 213, 177



115, 105, 103



179, 34, 0



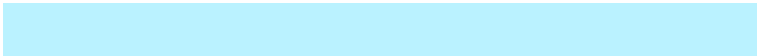
51, 10, 0

Inverse Universe

The Inverse Universe completely reimagines the original color for something new.



177, 219, 229



186, 242, 255



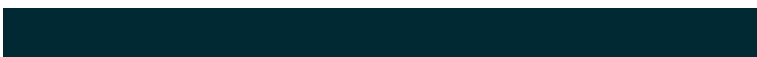
177, 193, 229



103, 113, 115



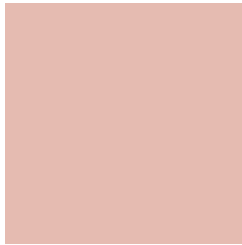
0, 144, 179



0, 41, 51

Previews

White Background



This preview shows how the RGB color 229, 187, 177 looks on a white background.

Color Contrast Check

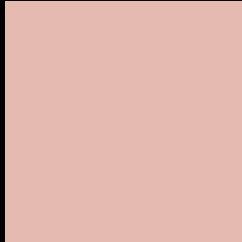
Large Text (above 18pt) WCAG AA × Fail

Any Text WCAG AA × Fail

Large Text (above 18pt) WCAG AAA × Fail

Any Text WCAG AAA × Fail

Black Background



This preview shows how the RGB color 229, 187, 177 looks on a black background.

Color Contrast Check

Large Text (above 18pt) WCAG AA ✓ Pass

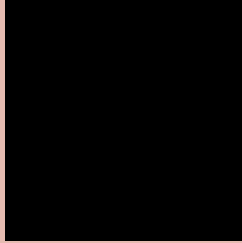
Any Text WCAG AA ✓ Pass

Large Text (above 18pt) WCAG AAA ✓ Pass

Any Text WCAG AAA ✓ Pass

If you want to check with other color combinations, try the [Color Contrast Checker](#).

RGB 229, 187, 177 Background



This preview shows how black text looks on a background with the RGB color 229, 187, 177.



This preview shows how white text looks on a background with the RGB color 229, 187, 177.

Color Blindness Simulation

Color vision deficiency is a very complex topic, and I could not describe the different causes any better than Wikipedia does, so if you want to learn more, you should check out their [article about color blindness](#).


Dichromacy



Original Color
229, 187, 177

Protanopia
204, 196, 182

Deuteranopia
223, 189, 177



Tritanopia
231, 184, 198

Trichromacy



Original Color

229, 187, 177

Protanomaly

213, 193, 180

Deuteranomaly

225, 188, 177

Tritanomaly

230, 185, 190

Monochromacy



Original Color

229, 187, 177

Achromatopsia

198, 198, 198

Achromatomaly

209, 194, 190

CSS Examples

Text

The CSS property to change the color of the text to RGB 229, 187, 177 is called "color". The color property can be set on classes, ids or directly on the HTML element.

This example shows how text in the color `rgb(229, 187, 177)` looks like.

```
.text, #text, p{  
    color:rgb(229, 187, 177)  
}
```

If you want to add a text shadow in that color use the text-shadow property, you can generate a text shadow directly with our [CSS Text Shadow Generator](#).

Here you see how black text with a 4 pixel rgb(229, 187, 177) colored shadow looks like.

```
.shadow{ text-shadow: 4px 4px 2px rgb(229, 187, 177) }
```

Border

The CSS property to change the border of an element to RGB 229, 187, 177 is called "border". The border property can be set on classes, ids or directly on the HTML element.

This example shows the color as border, it can be applied via the CSS property "border" or "border-color".

```
.border, #border, table{ border:4px solid rgb(229, 187, 177) }
```

If only the border color should be changed use the property `border-color`.

```
.border{ border-color:rgb(229, 187, 177) }
```

If you want to add a box shadow in that color use:

Here you see how a box with a 4 pixel `rgb(229, 187, 177)` colored shadow looks like.

```
.boxshadow{ -moz-box-shadow:4px 4px 4px  
4px rgb(229, 187, 177); -webkit-box-  
shadow:4px 4px 4px 4px rgb(229, 187, 177);  
box-shadow:4px 4px 4px 4px rgb(229, 187,  
177) }
```

Background

The CSS property to change the background color of an element to RGB 229, 187, 177 is called "background". The background property can be set on classes, ids or directly on the HTML element.

```
.background, #background, body{  
background: rgb(229, 187, 177) }
```

If only the background color should be changed can be used:

```
.background{ background-color: rgb(229,  
187, 177) }
```

This example shows the color as background, it is applied via the CSS property "background".

To optimize and compress your CSS code, you can use our [online CSS compressor and optimizer](#) based on csstidy. If you want to create a linear or radial gradient as background or border, check our [CSS Gradient Generator](#).

Hey! You found this booklet interesting? Support Converting Colors with the new Membership Option!

The pro membership hides all ads, plus gives you double the colors in the color bucket, and more awesome pro features!

[Learn more, Memberships starting at \\$2.50/m!](#)

**Follow me
on Twitter!**

@ConvertingColor