

# Converting Colors

RGB(229, 204, 190)

Have a look what the booklet for  
RGB(229, 204, 190) contains.

<b>RGB(229, 204, 190)</b> .....	3
<b><i>Conversions</i></b> .....	4
<b><i>Details</i></b> .....	6
<b><i>Harmonies</i></b> .....	11
<b><i>Previews</i></b> .....	23
<b><i>Color Blindness Simulation</i></b> .....	26
<b><i>CSS Examples</i></b> .....	29

# **Color**

**RGB(229, 204, 190)**

# Conversions

## Conversions Part 1

<b>Format</b>	<b>Color</b>
Hex	E5CCBE
RGB	229, 204, 190
RGB Percent	90%, 80%, 75%
CMY	0.1020, 0.2000, 0.2549
CMYK	0.00, 0.11, 0.17, 0.10
HSL	22°, 43%, 82%
HSV	22°, 17%, 90%
XYZ	63.2002, 63.5615, 57.6528
YIQ	209.8790, 19.3940, 0.9460

# Conversions

## Conversions Part 2

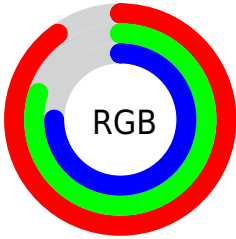
Format	Color
R <sub>Y</sub> B	229, 212, 190
Decimal	15060158
CIE Lab	83.74, 6.51, 10.16
CIE LCh	84, 12.066, 57.340
Yxy	63.5615, 0.3427, 0.3447
Android (android.graphics.Color)	4293250238 (0xFFE5CCBE)
YUV	209.8790, -9.8003, 16.7691
Hunter-Lab	79.7254, 1.9816, 12.9327

# Details

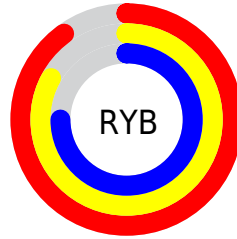
The RGB color **229, 204, 190** is a light color, and the websafe version is hex **CCCCCC**. A complement of this color would be **190, 215, 229**, and the grayscale version is **210, 210, 210**.

A 20% lighter version of the original color is **255, 255, 246**, and **173, 150, 137** is the 20% darker color. If you saturate the color by 10%, you get **229, 189, 167**, and if you desaturate by 10%, it is **229, 219, 213**.

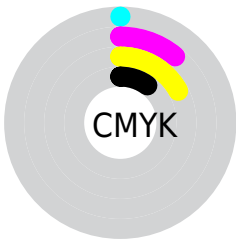
# Distribution



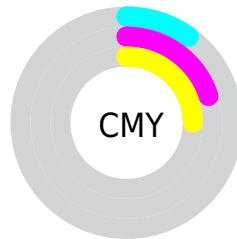
- Red (90%)
- Green (80%)
- Blue (75%)



- Red (90%)
- Yellow (83%)
- Blue (75%)



- Cyan (0%)
- Magenta (11%)
- Yellow (17%)
- Black (10%)



- Cyan (10%)
- Magenta (20%)
- Yellow (25%)

# Brightness & Saturation Gradients

These gradients show how the RGB color 229, 204, 190 changes by changing the brightness by 10 percent. The first figure shows a shift by +10% for each color and the second figure -10%.


Similar to the brightness gradients but the following saturation gradients show a change of the RGB color 229, 204, 190 by changing the saturation by 10% instead.



 229, 204, 190

 229, 204, 190

255, 255, 255

 201, 177, 163


 255, 255, 246


 173, 150, 137

 146, 124, 111

 120, 99, 87

 95, 75, 64

 71, 53, 42


 48, 31, 21

 28, 8, 0


 0, 0, 0

 229, 204, 190

 229, 204, 190

 229, 189, 167

 229, 219, 213

 229, 175, 144


 229, 233, 236

 229, 160, 121

 229, 248, 255

 229, 145, 98

 229, 255, 255

 229, 131, 76

 229, 116, 53

 229, 101, 30

 229, 87, 7

 229, 82, 0

# Harmonies

## Analogous

The Analogous color harmony consists of three colors that are next to each other on the color wheel.



233, 202, 199



229, 204, 190



219, 208, 186

# Triad

The Triadic color harmony groups three colors that are evenly spaced from another and form a triangle on the color wheel.



229, 204, 190



184, 216, 207



210, 206, 229

# Complementary

The Complementary color scheme is a pair of colors which are on the opposite of each other on the color wheel.



229, 204, 190



190, 215, 229

# Split Complementary

Split-complementary colors differ from the complementary color scheme. The scheme consists of three colors, the original color and two neighbors of the complement color.



196, 210, 231



229, 204, 190



180, 215, 219

# Square

The Square scheme is like the rectangle color scheme, but the four colors are evenly spaced on the color wheel.



229, 204, 190



194, 214, 196



185, 213, 227



223, 203, 221

# Rectangle

The Rectangle color scheme consists of four colors that form a rectangle on the color wheel.



229, 204, 190



211, 210, 187



185, 213, 227



205, 207, 230



# Sweetspot

The Sweet Spot groups the original color and five complimentary colors.



229, 204, 190



255, 247, 242



229, 190, 215



128, 123, 120



0, 0, 0



128, 128, 128

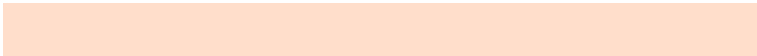


# Same Dimension

The Same Dimension uses a secret algorithm to generate beautiful new colors.



229, 204, 190



255, 222, 204



229, 223, 190



115, 107, 103



179, 64, 0



51, 18, 0

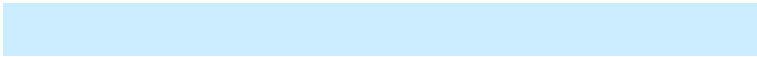


# Inverse Universe

The Inverse Universe completely reimagines the original color for something new.



190, 215, 229



204, 237, 255



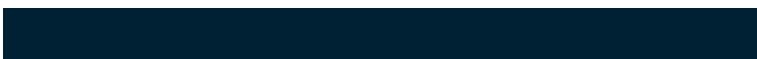
190, 196, 229



103, 111, 115



0, 114, 179

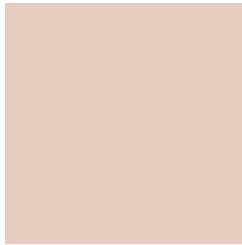


0, 33, 51



# Previews

## White Background



This preview shows how the RGB color 229, 204, 190 looks on a white background.

## Color Contrast Check

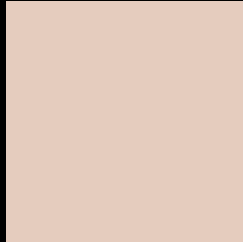
Large Text (above 18pt) WCAG AA × Fail

Any Text WCAG AA × Fail

Large Text (above 18pt) WCAG AAA × Fail

Any Text WCAG AAA × Fail

# Black Background



This preview shows how the RGB color 229, 204, 190 looks on a black background.

## Color Contrast Check

Large Text (above 18pt) WCAG AA ✓ Pass

Any Text WCAG AA ✓ Pass

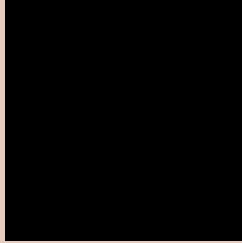
Large Text (above 18pt) WCAG AAA ✓ Pass

Any Text WCAG AAA ✓ Pass

If you want to check with other color combinations, try the [Color Contrast Checker](#).



## RGB 229, 204, 190 Background



This preview shows how black text looks on a background with the RGB color 229, 204, 190.




This preview shows how white text looks on a background with the RGB color 229, 204, 190.

# Color Blindness Simulation

Color vision deficiency is a very complex topic, and I could not describe the different causes any better than Wikipedia does, so if you want to learn more, you should check out their [article about color blindness](#).

## Dichromacy

	<b>Original Color</b> 229, 204, 190
	<b>Protanopia</b> 217, 208, 192
	<b>Deuteranopia</b> 236, 201, 190



**Tritanopia**  
232, 200, 216

# Trichromacy



**Original Color**

229, 204, 190

**Protanomaly**

221, 207, 191

**Deuteranomaly**

233, 202, 190

**Tritanomaly**

231, 201, 207

# Monochromacy



**Original Color**

229, 204, 190

**Achromatopsia**

210, 210, 210

**Achromatomaly**

217, 208, 203

# CSS Examples

## Text

The CSS property to change the color of the text to RGB 229, 204, 190 is called "color". The color property can be set on classes, ids or directly on the HTML element.

This example shows how text in the color `rgb(229, 204, 190)` looks like.

```
.text, #text, p{  
    color:rgb(229, 204, 190)  
}
```

If you want to add a text shadow in that color use the text-shadow property, you can generate a text shadow directly with our [CSS Text Shadow Generator](#).

Here you see how black text with a 4 pixel rgb(229, 204, 190) colored shadow looks like.

```
.shadow{ text-shadow: 4px 4px 2px rgb(229, 204, 190) }
```

## Border

The CSS property to change the border of an element to RGB 229, 204, 190 is called "border". The border property can be set on classes, ids or directly on the HTML element.

This example shows the color as border, it can be applied via the CSS property "border" or "border-color".

```
.border, #border, table{ border:4px solid rgb(229, 204, 190) }
```

If only the border color should be changed use the property `border-color`.

```
.border{ border-color:rgb(229, 204, 190) }
```

If you want to add a box shadow in that color use:

Here you see how a box with a 4 pixel `rgb(229, 204, 190)` colored shadow looks like.

```
.boxshadow{ -moz-box-shadow:4px 4px 4px  
4px rgb(229, 204, 190); -webkit-box-  
shadow:4px 4px 4px 4px rgb(229, 204, 190);  
box-shadow:4px 4px 4px 4px rgb(229, 204,  
190) }
```

# Background

The CSS property to change the background color of an element to RGB 229, 204, 190 is called "background". The background property can be set on classes, ids or directly on the HTML element.

```
.background, #background, body{  
background: rgb(229, 204, 190) }
```

If only the background color should be changed can be used:

```
.background{ background-color: rgb(229,  
204, 190) }
```

This example shows the color as background, it is applied via the CSS property "background".

To optimize and compress your CSS code, you can use our [online CSS compressor and optimizer](#) based on csstidy. If you want to create a linear or radial gradient as background or border, check our [CSS Gradient Generator](#).



Hey! You found this booklet interesting? Support Converting Colors with the new Membership Option!

The pro membership hides all ads, plus gives you double the colors in the color bucket, and more awesome pro features!

**[Learn more, Memberships starting at \\$2.50/m!](#)**

**Follow me  
on Twitter!**

@ConvertingColor