

Converting Colors

RGB(229, 204, 214)

Have a look what the booklet for
RGB(229, 204, 214) contains.

RGB(229, 204, 214)	3
<i>Conversions</i>	4
<i>Details</i>	6
<i>Harmonies</i>	11
<i>Previews</i>	23
<i>Color Blindness Simulation</i>	26
<i>CSS Examples</i>	29

Color

RGB(229, 204, 214)

Conversions

Conversions Part 1

Format	Color
Hex	E5CCD6
RGB	229, 204, 214
RGB Percent	90%, 80%, 84%
CMY	0.1020, 0.2000, 0.1608
CMYK	0.00, 0.11, 0.07, 0.10
HSL	336°, 32%, 85%
HSV	336°, 11%, 90%
XYZ	66.0436, 64.6988, 72.6256
YIQ	212.6150, 11.6900, 8.4100

Conversions

Conversions Part 2

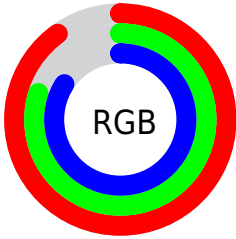
Format	Color
R _Y B	229, 204, 214
Decimal	15060182
CIE Lab	84.33, 10.41, -1.77
CIE LCh	84, 10.560, 350.374
Yxy	64.6988, 0.3247, 0.3181
Android (android.graphics.Color)	4293250262 (0xFFE5CCD6)
YUV	212.6150, 0.6828, 14.3696
Hunter-Lab	80.4356, 5.7995, 2.7717

Details

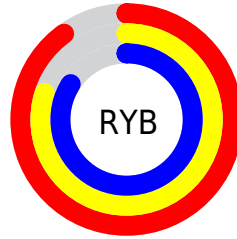
The RGB color **229, 204, 214** is a light color, and the websafe version is hex **CCCCCC**. A complement of this color would be **204, 229, 219**, and the grayscale version is **213, 213, 213**.

A 20% lighter version of the original color is **255, 255, 255**, and **173, 150, 159** is the 20% darker color. If you saturate the color by 10%, you get **229, 181, 200**, and if you desaturate by 10%, it is **229, 227, 228**.

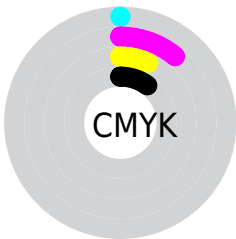
Distribution



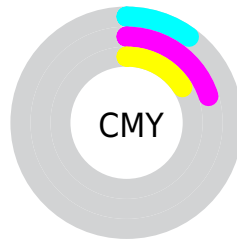
- Red (90%)
- Green (80%)
- Blue (84%)



- Red (90%)
- Yellow (80%)
- Blue (84%)



- Cyan (0%)
- Magenta (11%)
- Yellow (7%)
- Black (10%)



- Cyan (10%)
- Magenta (20%)
- Yellow (16%)

Brightness & Saturation Gradients

These gradients show how the RGB color 229, 204, 214 changes by changing the brightness by 10 percent. The first figure shows a shift by +10% for each color and the second figure -10%.

Similar to the brightness gradients but the following saturation gradients show a change of the RGB color 229, 204, 214 by changing the saturation by 10% instead.

■ 229, 204, 214

255, 255, 255

■ 229, 204, 214

■ 201, 177, 186

■ 173, 150, 159

■ 147, 124, 133

■ 121, 99, 108

■ 96, 75, 84

■ 72, 52, 61


■ 49, 31, 39

■ 29, 8, 18

■ 0, 0, 0

 229, 204, 214

 229, 204, 214

 229, 181, 200

 229, 227, 228

 229, 158, 187

 229, 250, 241

 229, 135, 173

 229, 255, 255

 229, 112, 159

 229, 90, 145

 229, 67, 132

 229, 44, 118

 229, 21, 104

 229, 0, 92

Harmonies

Analogous

The Analogous color harmony consists of three colors that are next to each other on the color wheel.



220, 206, 223



229, 204, 214



232, 204, 204

Triad

The Triadic color harmony groups three colors that are evenly spaced from another and form a triangle on the color wheel.



229, 204, 214



211, 212, 192



188, 215, 225

Complementary

The Complementary color scheme is a pair of colors which are on the opposite of each other on the color wheel.



229, 204, 214



204, 229, 219

Split Complementary

Split-complementary colors differ from the complementary color scheme. The scheme consists of three colors, the original color and two neighbors of the complement color.



186, 216, 217



229, 204, 214



200, 215, 197

Square

The Square scheme is like the rectangle color scheme, but the four colors are evenly spaced on the color wheel.



229, 204, 214



222, 209, 191



190, 216, 207



197, 212, 230

Rectangle

The Rectangle color scheme consists of four colors that form a rectangle on the color wheel.



229, 204, 214



231, 205, 198



190, 216, 207



187, 216, 223

Sweetspot

The Sweet Spot groups the original color and five complimentary colors.



229, 204, 214



255, 247, 250



219, 204, 229



128, 122, 124



0, 0, 0



128, 128, 128

Same Dimension

The Same Dimension uses a secret algorithm to generate beautiful new colors.



229, 204, 214



255, 222, 235



229, 207, 204



115, 103, 108



179, 0, 71



51, 0, 20

Inverse Universe

The Inverse Universe completely reimagines the original color for something new.



229, 204, 214



255, 222, 235



204, 227, 229



115, 103, 108



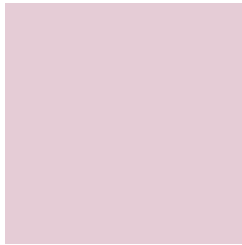
179, 0, 71



51, 0, 20

Previews

White Background



This preview shows how the RGB color 229, 204, 214 looks on a white background.

Color Contrast Check

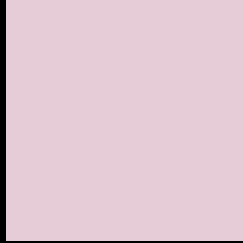
Large Text (above 18pt) WCAG AA × Fail

Any Text WCAG AA × Fail

Large Text (above 18pt) WCAG AAA × Fail

Any Text WCAG AAA × Fail

Black Background



This preview shows how the RGB color 229, 204, 214 looks on a black background.

Color Contrast Check

Large Text (above 18pt) WCAG AA ✓ Pass

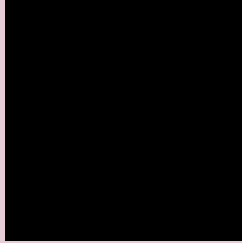
Any Text WCAG AA ✓ Pass

Large Text (above 18pt) WCAG AAA ✓ Pass

Any Text WCAG AAA ✓ Pass

If you want to check with other color combinations, try the [Color Contrast Checker](#).

RGB 229, 204, 214 Background



This preview shows how black text looks on a background with the RGB color 229, 204, 214.



This preview shows how white text looks on a background with the RGB color 229, 204, 214.

Color Blindness Simulation

Color vision deficiency is a very complex topic, and I could not describe the different causes any better than Wikipedia does, so if you want to learn more, you should check out their [article about color blindness](#).

Dichromacy



Original Color
229, 204, 214

Protanopia
212, 209, 217

Deuteranopia
229, 204, 214



Tritanopia
230, 203, 219

Trichromacy



Original Color

229, 204, 214

Protanomaly

218, 207, 216

Deuteranomaly

229, 204, 214

Tritanomaly

230, 203, 217

Monochromacy



Original Color

229, 204, 214

Achromatopsia

213, 213, 213

Achromatomaly

219, 210, 213

CSS Examples

Text

The CSS property to change the color of the text to RGB 229, 204, 214 is called "color". The color property can be set on classes, ids or directly on the HTML element.

This example shows how text in the color `rgb(229, 204, 214)` looks like.

```
.text, #text, p{  
    color:rgb(229, 204, 214)  
}
```

If you want to add a text shadow in that color use the text-shadow property, you can generate a text shadow directly with our [CSS Text Shadow Generator](#).

Here you see how black text with a 4 pixel rgb(229, 204, 214) colored shadow looks like.

```
.shadow{ text-shadow: 4px 4px 2px rgb(229, 204, 214) }
```

Border

The CSS property to change the border of an element to RGB 229, 204, 214 is called "border". The border property can be set on classes, ids or directly on the HTML element.

This example shows the color as border, it can be applied via the CSS property "border" or "border-color".

```
.border, #border, table{ border:4px solid rgb(229, 204, 214) }
```

If only the border color should be changed use the property `border-color`.

```
.border{ border-color:rgb(229, 204, 214) }
```

If you want to add a box shadow in that color use:

Here you see how a box with a 4 pixel `rgb(229, 204, 214)` colored shadow looks like.

```
.boxshadow{ -moz-box-shadow:4px 4px 4px 4px rgb(229, 204, 214); -webkit-box-shadow:4px 4px 4px 4px rgb(229, 204, 214); box-shadow:4px 4px 4px 4px rgb(229, 204, 214) }
```

Background

The CSS property to change the background color of an element to RGB 229, 204, 214 is called "background". The background property can be set on classes, ids or directly on the HTML element.

```
.background, #background, body{  
background: rgb(229, 204, 214) }
```

If only the background color should be changed can be used:

```
.background{ background-color: rgb(229,  
204, 214) }
```

This example shows the color as background, it is applied via the CSS property "background".

To optimize and compress your CSS code, you can use our [online CSS compressor and optimizer](#) based on csstidy. If you want to create a linear or radial gradient as background or border, check our [CSS Gradient Generator](#).

Hey! You found this booklet interesting? Support Converting Colors with the new Membership Option!

The pro membership hides all ads, plus gives you double the colors in the color bucket, and more awesome pro features!

[Learn more, Memberships starting at \\$2.50/m!](#)

**Follow me
on Twitter!**

@ConvertingColor