

Converting Colors

RGB(230, 71, 116)

Have a look what the booklet for
RGB(230, 71, 116) contains.

RGB(230, 71, 116)	3
<i>Conversions</i>	4
<i>Details</i>	6
<i>Harmonies</i>	11
<i>Previews</i>	23
<i>Color Blindness Simulation</i>	26
<i>CSS Examples</i>	29

Color

RGB(230, 71, 116)

Conversions

Conversions Part 1

Format	Color
Hex	E64774
RGB	230, 71, 116
RGB Percent	90%, 28%, 45%
CMY	0.0980, 0.7216, 0.5451
CMYK	0.00, 0.69, 0.50, 0.10
HSL	343°, 76%, 59%
HSV	343°, 69%, 90%
XYZ	38.0388, 22.5904, 18.8785
YIQ	123.6710, 80.3190, 47.7030

Conversions

Conversions Part 2

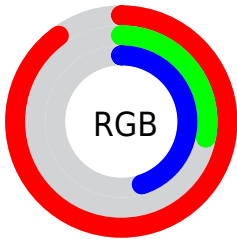
Format	Color
R_{YB}	230, 71, 116
Decimal	15091572
CIE _{Lab}	54.65, 63.95, 10.28
CIE _{LCh}	55, 64.772, 9.135
Yxy	22.5904, 0.4784, 0.2841
Android (android.graphics.Color)	4293281652 (0xFFE64774)
YUV	123.6710, -3.7818, 93.2505
Hunter-Lab	47.5294, 59.6808, 9.7208

Details

The RGB color **230, 71, 116** is a dark color, and the websafe version is hex **CC3366**. The color can be described as middle muted rose. A complement of this color would be **71, 230, 185**, and the grayscale version is **124, 124, 124**.

A 20% lighter version of the original color is **255, 129, 168**, and **169, 0, 68** is the 20% darker color. If you saturate the color by 10%, you get **230, 48, 100**, and if you desaturate by 10%, it is **230, 94, 132**.

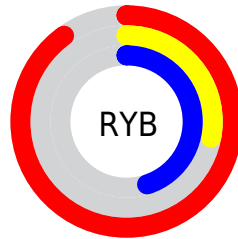
Distribution



Red (90%)

Green (28%)

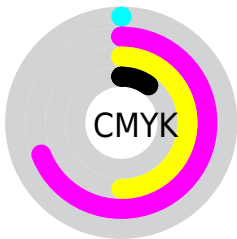
Blue (45%)



Red (90%)

Yellow (28%)

Blue (45%)

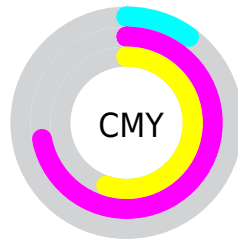


Cyan (0%)

Magenta (69%)

Yellow (50%)

Black (10%)



Cyan (10%)

Magenta (72%)

Yellow (55%)

Brightness & Saturation Gradients

These gradients show how the RGB color 230, 71, 116 changes by changing the brightness by 10 percent. The first figure shows a shift by +10% for each color and the second figure -10%.

Similar to the brightness gradients but the following saturation gradients show a change of the RGB color 230, 71, 116 by changing the saturation by 10% instead.



230, 71, 116



230, 71, 116

255, 255, 255



199, 38, 92



255, 129, 168



169, 0, 68



255, 158, 195



139, 0, 46



255, 187, 223



109, 0, 26



255, 216, 251



80, 0, 2



255, 246, 255



51, 0, 2



0, 0, 0



230, 71, 116



230, 71, 116



230, 48, 100




230, 94, 132


 230, 25, 83


 230, 117, 149

 230, 2, 67

 230, 140, 165

 230, 0, 65

 230, 163, 182

 230, 186, 198

 230, 209, 215

 230, 232, 231

 230, 255, 248

 230, 255, 255

Harmonies

Analogous

The Analogous color harmony consists of three colors that are next to each other on the color wheel.



210, 81, 172



230, 71, 116



220, 88, 63

Triad

The Triadic color harmony groups three colors that are evenly spaced from another and form a triangle on the color wheel.



230, 71, 116



80, 147, 32



0, 147, 236

Complementary

The Complementary color scheme is a pair of colors which are on the opposite of each other on the color wheel.



230, 71, 116



71, 230, 185

Split Complementary

Split-complementary colors differ from the complementary color scheme. The scheme consists of three colors, the original color and two neighbors of the complement color.



0, 155, 200



230, 71, 116



0, 154, 88

Square

The Square scheme is like the rectangle color scheme, but the four colors are evenly spaced on the color wheel.



230, 71, 116



141, 134, 0



0, 156, 147



0, 132, 242

Rectangle

The Rectangle color scheme consists of four colors that form a rectangle on the color wheel.



230, 71, 116



201, 105, 29



0, 156, 147



0, 151, 227

Sweetspot

The Sweet Spot groups the original color and five complimentary colors.



230, 71, 116



255, 201, 217



185, 71, 230



128, 96, 105



0, 0, 0



128, 128, 128

Same Dimension

The Same Dimension uses a secret algorithm to generate beautiful new colors.



230, 71, 116



255, 43, 103



230, 105, 71



115, 103, 107



179, 0, 51



51, 0, 14

Inverse Universe

The Inverse Universe completely reimagines the original color for something new.



230, 71, 116



255, 43, 103



71, 196, 230



115, 103, 107



179, 0, 51



51, 0, 14

Previews

White Background



This preview shows how the RGB color 230, 71, 116 looks on a white background.

Color Contrast Check

Large Text (above 18pt) WCAG AA ✓ Pass

Any Text WCAG AA ✗ Fail

Large Text (above 18pt) WCAG AAA ✗ Fail

Any Text WCAG AAA ✗ Fail

Black Background



This preview shows how the RGB color 230, 71, 116 looks on a black background.

Color Contrast Check

Large Text (above 18pt) WCAG AA ✓ Pass

Any Text WCAG AA ✓ Pass

Large Text (above 18pt) WCAG AAA ✓ Pass

Any Text WCAG AAA × Fail

If you want to check with other color combinations, try the [Color Contrast Checker](#).

RGB 230, 71, 116 Background



This preview shows how black text looks on a background with the RGB color 230, 71, 116.



This preview shows how white text looks on a background with the RGB color 230, 71, 116.

Color Blindness Simulation

Color vision deficiency is a very complex topic, and I could not describe the different causes any better than Wikipedia does, so if you want to learn more, you should check out their [article about color blindness](#).

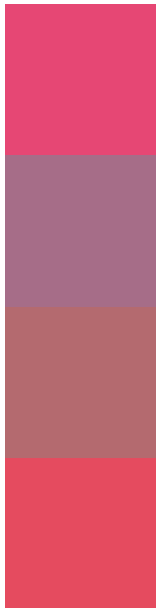
Dichromacy





Tritanopia
228, 78, 83

Trichromacy



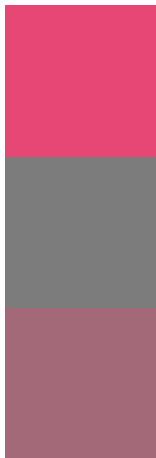
Original Color
230, 71, 116

Protanomaly
166, 109, 136

Deuteranomaly
180, 106, 111

Tritanomaly
229, 75, 95

Monochromacy



Original Color
230, 71, 116

Achromatopsia
124, 124, 124

Achromatomaly
163, 105, 121

CSS Examples

Text

The CSS property to change the color of the text to RGB 230, 71, 116 is called "color". The color property can be set on classes, ids or directly on the HTML element.

This example shows how text in the color `rgb(230, 71, 116)` looks like.

```
.text, #text, p{  
    color:rgb(230, 71, 116)  
}
```

If you want to add a text shadow in that color use the text-shadow property, you can generate a text shadow directly with our [CSS Text Shadow Generator](#).

Here you see how black text with a 4 pixel rgb(230, 71, 116) colored shadow looks like.

```
.shadow{ text-shadow: 4px 4px 2px rgb(230, 71, 116) }
```

Border

The CSS property to change the border of an element to RGB 230, 71, 116 is called "border". The border property can be set on classes, ids or directly on the HTML element.

This example shows the color as border, it can be applied via the CSS property "border" or "border-color".

```
.border, #border, table{ border:4px solid rgb(230, 71, 116) }
```

If only the border color should be changed use the property `border-color`.

```
.border{ border-color:rgb(230, 71, 116) }
```

If you want to add a box shadow in that color use:

Here you see how a box with a 4 pixel `rgb(230, 71, 116)` colored shadow looks like.

```
.boxshadow{ -moz-box-shadow:4px 4px 4px  
4px rgb(230, 71, 116); -webkit-box-  
shadow:4px 4px 4px 4px rgb(230, 71, 116);  
box-shadow:4px 4px 4px 4px rgb(230, 71,  
116) }
```

Background

The CSS property to change the background color of an element to RGB 230, 71, 116 is called "background". The background property can be set on classes, ids or directly on the HTML element.

```
.background, #background, body{  
background: rgb(230, 71, 116) }
```

If only the background color should be changed can be used:

```
.background{ background-color: rgb(230, 71,  
116) }
```

This example shows the color as background, it is applied via the CSS property "background".

To optimize and compress your CSS code, you can use our [online CSS compressor and optimizer](#) based on csstidy. If you want to create a linear or radial gradient as background or border, check our [CSS Gradient Generator](#).

Hey! You found this booklet interesting? Support Converting Colors with the new Membership Option!

The pro membership hides all ads, plus gives you double the colors in the color bucket, and more awesome pro features!

[Learn more, Memberships starting at \\$2.50/m!](#)

**Follow me
on Twitter!**

@ConvertingColor