

Converting Colors

RGB(231, 134, 152)

Have a look what the booklet for
RGB(231, 134, 152) contains.

RGB(231, 134, 152)	3
<i>Conversions</i>	4
<i>Details</i>	6
<i>Harmonies</i>	11
<i>Previews</i>	23
<i>Color Blindness Simulation</i>	26
<i>CSS Examples</i>	29

Color

RGB(231, 134, 152)

Conversions

Conversions Part 1

Format	Color
Hex	E78698
RGB	231, 134, 152
RGB Percent	91%, 53%, 60%
CMY	0.0941, 0.4745, 0.4039
CMYK	0.00, 0.42, 0.34, 0.09
HSL	349°, 67%, 72%
HSV	349°, 42%, 91%
XYZ	47.1476, 36.3061, 34.2286
YIQ	165.0550, 52.0340, 26.1620

Conversions

Conversions Part 2

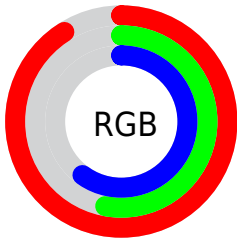
Format	Color
R_{YB}	231, 134, 152
Decimal	15173272
CIE _{Lab}	66.75, 39.11, 6.69
CIE _{LCh}	67, 39.674, 9.705
Yxy	36.3061, 0.4006, 0.3085
Android (android.graphics.Color)	4293363352 (0xFFE78698)
YUV	165.0550, -6.4361, 57.8338
Hunter-Lab	60.2546, 34.2260, 8.4975

Details

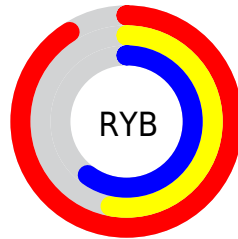
The RGB color **231, 134, 152** is a light color, and the websafe version is hex **FF9999**. A complement of this color would be **134, 231, 213**, and the grayscale version is **165, 165, 165**.

A 20% lighter version of the original color is **255, 189, 206**, and **173, 82, 101** is the 20% darker color. If you saturate the color by 10%, you get **231, 111, 133**, and if you desaturate by 10%, it is **231, 157, 171**.

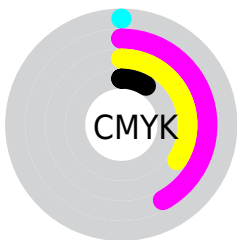
Distribution



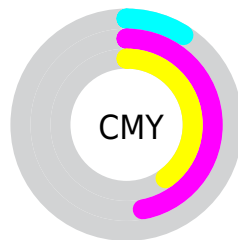
- Red (91%)
- Green (53%)
- Blue (60%)



- Red (91%)
- Yellow (53%)
- Blue (60%)



- Cyan (0%)
- Magenta (42%)
- Yellow (34%)
- Black (9%)



- Cyan (9%)
- Magenta (47%)
- Yellow (40%)

Brightness & Saturation Gradients

These gradients show how the RGB color 231, 134, 152 changes by changing the brightness by 10 percent. The first figure shows a shift by +10% for each color and the second figure -10%.

Similar to the brightness gradients but the following saturation gradients show a change of the RGB color 231, 134, 152 by changing the saturation by 10% instead.

 231, 134, 152

 231, 134, 152

255, 255, 255

 202, 108, 126

 255, 189, 206

 173, 82, 101

 255, 217, 234

 145, 57, 77

 255, 246, 255

 117, 31, 55

 90, 0, 34

 63, 0, 11

 39, 0, 1

 0, 0, 0

 231, 134, 152

 231, 134, 152

■ 231, 111, 133

■ 231, 157, 171

■ 231, 88, 114

■ 231, 180, 190

■ 231, 65, 96

■ 231, 203, 208

■ 231, 42, 77

■ 231, 226, 227

■ 231, 19, 58

■ 231, 250, 246

■ 231, 0, 43

■ 231, 255, 255

Harmonies

Analogous

The Analogous color harmony consists of three colors that are next to each other on the color wheel.



216, 138, 188



231, 134, 152



226, 140, 119

Triad

The Triadic color harmony groups three colors that are evenly spaced from another and form a triangle on the color wheel.



231, 134, 152



135, 174, 106



57, 173, 229

Complementary

The Complementary color scheme is a pair of colors which are on the opposite of each other on the color wheel.



231, 134, 152



134, 231, 213

Split Complementary

Split-complementary colors differ from the complementary color scheme. The scheme consists of three colors, the original color and two neighbors of the complement color.



0, 179, 207



231, 134, 152



89, 179, 136

Square

The Square scheme is like the rectangle color scheme, but the four colors are evenly spaced on the color wheel.



231, 134, 152



174, 164, 91



16, 181, 173



128, 162, 232

Rectangle

The Rectangle color scheme consists of four colors that form a rectangle on the color wheel.



231, 134, 152



214, 148, 102



16, 181, 173



19, 175, 223

Sweetspot

The Sweet Spot groups the original color and five complimentary colors.



231, 134, 152



255, 222, 228



212, 134, 231



128, 107, 111



0, 0, 0



128, 128, 128

Same Dimension

The Same Dimension uses a secret algorithm to generate beautiful new colors.



231, 134, 152



255, 128, 151



231, 163, 134



115, 103, 105



179, 0, 33



51, 0, 9

Inverse Universe

The Inverse Universe completely reimagines the original color for something new.



231, 134, 152



255, 128, 151



134, 202, 231



115, 103, 105



179, 0, 33



51, 0, 9

Previews

White Background



This preview shows how the RGB color 231, 134, 152 looks on a white background.

Color Contrast Check

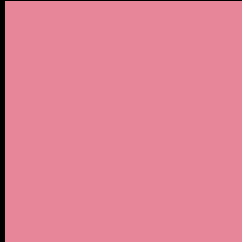
Large Text (above 18pt) WCAG AA × Fail

Any Text WCAG AA × Fail

Large Text (above 18pt) WCAG AAA × Fail

Any Text WCAG AAA × Fail

Black Background



This preview shows how the RGB color 231, 134, 152 looks on a black background.

Color Contrast Check

Large Text (above 18pt) WCAG AA ✓ Pass

Any Text WCAG AA ✓ Pass

Large Text (above 18pt) WCAG AAA ✓ Pass

Any Text WCAG AAA ✓ Pass

If you want to check with other color combinations, try the [Color Contrast Checker](#).

RGB 231, 134, 152 Background



This preview shows how black text looks on a background with the RGB color 231, 134, 152.

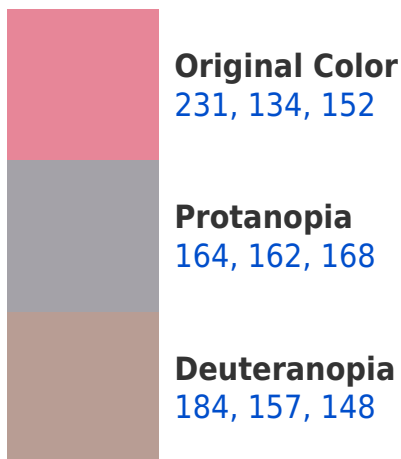


This preview shows how white text looks on a background with the RGB color 231, 134, 152.

Color Blindness Simulation

Color vision deficiency is a very complex topic, and I could not describe the different causes any better than Wikipedia does, so if you want to learn more, you should check out their [article about color blindness](#).

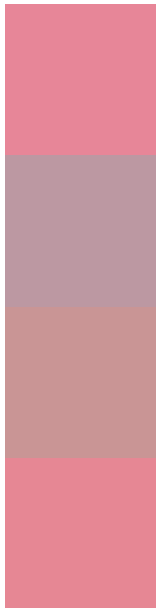
Dichromacy





Tritanopia
230, 135, 145

Trichromacy



Original Color
231, 134, 152

Protanomaly
188, 152, 162

Deuteranomaly
201, 149, 149

Tritanomaly
230, 135, 148

Monochromacy



Original Color
231, 134, 152

Achromatopsia
165, 165, 165

Achromatomaly
189, 154, 160

CSS Examples

Text

The CSS property to change the color of the text to RGB 231, 134, 152 is called "color". The color property can be set on classes, ids or directly on the HTML element.

This example shows how text in the color rgb(231, 134, 152) looks like.

```
.text, #text, p{  
    color:rgb(231, 134, 152)  
}
```

If you want to add a text shadow in that color use the text-shadow property, you can generate a text shadow directly with our [CSS Text Shadow Generator](#).

Here you see how black text with a 4 pixel rgb(231, 134, 152) colored shadow looks like.

```
.shadow{ text-shadow: 4px 4px 2px rgb(231, 134, 152) }
```

Border

The CSS property to change the border of an element to RGB 231, 134, 152 is called "border". The border property can be set on classes, ids or directly on the HTML element.

This example shows the color as border, it can be applied via the CSS property "border" or "border-color".

```
.border, #border, table{ border:4px solid rgb(231, 134, 152) }
```

If only the border color should be changed use the property `border-color`.

```
.border{ border-color:rgb(231, 134, 152) }
```

If you want to add a box shadow in that color use:

Here you see how a box with a 4 pixel `rgb(231, 134, 152)` colored shadow looks like.

```
.boxshadow{ -moz-box-shadow:4px 4px 4px  
4px rgb(231, 134, 152); -webkit-box-  
shadow:4px 4px 4px 4px rgb(231, 134, 152);  
box-shadow:4px 4px 4px 4px rgb(231, 134,  
152) }
```

Background

The CSS property to change the background color of an element to RGB 231, 134, 152 is called "background". The background property can be set on classes, ids or directly on the HTML element.

```
.background, #background, body{  
background: rgb(231, 134, 152) }
```

If only the background color should be changed can be used:

```
.background{ background-color: rgb(231,  
134, 152) }
```

This example shows the color as background, it is applied via the CSS property "background".

To optimize and compress your CSS code, you can use our [online CSS compressor and optimizer](#) based on csstidy. If you want to create a linear or radial gradient as background or border, check our [CSS Gradient Generator](#).

Hey! You found this booklet interesting? Support Converting Colors with the new Membership Option!

The pro membership hides all ads, plus gives you double the colors in the color bucket, and more awesome pro features!

[Learn more, Memberships starting at \\$2.50/m!](#)

**Follow me
on Twitter!**

@ConvertingColor