

Converting Colors

RGB(231, 203, 204)

Have a look what the booklet for
RGB(231, 203, 204) contains.

RGB(231, 203, 204)	3
<i>Conversions</i>	4
<i>Details</i>	6
<i>Harmonies</i>	11
<i>Previews</i>	23
<i>Color Blindness Simulation</i>	26
<i>CSS Examples</i>	29

Color

RGB(231, 203, 204)

Conversions

Conversions Part 1

Format	Color
Hex	E7CBCC
RGB	231, 203, 204
RGB Percent	91%, 80%, 80%
CMY	0.0941, 0.2039, 0.2000
CMYK	0.00, 0.12, 0.12, 0.09
HSL	358°, 37%, 85%
HSV	358°, 12%, 91%
XYZ	65.2100, 64.0604, 66.0547
YIQ	211.4860, 16.3670, 6.2470

Conversions

Conversions Part 2

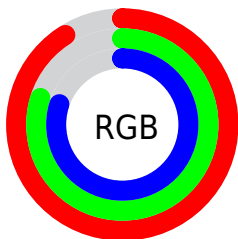
Format	Color
R _Y B	231, 203, 204
Decimal	15190988
CIE Lab	84.00, 9.97, 3.10
CIE LCh	84, 10.439, 17.281
Yxy	64.0604, 0.3339, 0.3280
Android (android.graphics.Color)	4293381068 (0xFFE7CBCC)
YUV	211.4860, -3.6906, 17.1138
Hunter-Lab	80.0378, 5.3651, 7.0947

Details

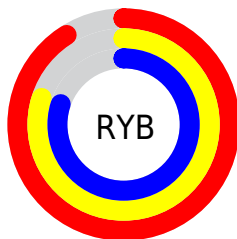
The RGB color **231, 203, 204** is a light color, and the websafe version is hex **FFCCCC**. A complement of this color would be **203, 231, 230**, and the grayscale version is **212, 212, 212**.

A 20% lighter version of the original color is 255, 255, 255, and **175, 149, 150** is the 20% darker color. If you saturate the color by 10%, you get **231, 180, 182**, and if you desaturate by 10%, it is **231, 226, 226**.

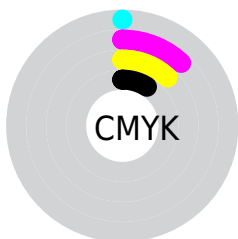
Distribution



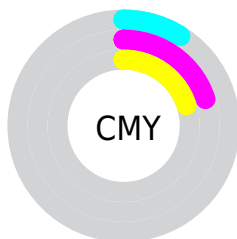
- Red (91%)
- Green (80%)
- Blue (80%)



- Red (91%)
- Yellow (80%)
- Blue (80%)



- Cyan (0%)
- Magenta (12%)
- Yellow (12%)
- Black (9%)



- Cyan (9%)
- Magenta (20%)
- Yellow (20%)

Brightness & Saturation Gradients

These gradients show how the RGB color 231, 203, 204 changes by changing the brightness by 10 percent. The first figure shows a shift by +10% for each color and the second figure -10%.

Similar to the brightness gradients but the following saturation gradients show a change of the RGB color 231, 203, 204 by changing the saturation by 10% instead.

■ 231, 203, 204

255, 255, 255

■ 231, 203, 204

■ 203, 176, 177

■ 175, 149, 150

■ 148, 123, 124

■ 122, 98, 99

■ 97, 74, 75

■ 73, 52, 53


■ 50, 30, 32

■ 31, 7, 7


■ 0, 0, 0

 231, 203, 204


 231, 203, 204

 231, 180, 182


 231, 226, 226

 231, 157, 159


 231, 249, 249


 231, 134, 137


 231, 255, 255

 231, 111, 115

 231, 88, 93

 231, 64, 70

 231, 41, 48

 231, 18, 26

 231, 0, 8

Harmonies

Analogous

The Analogous color harmony consists of three colors that are next to each other on the color wheel.



227, 203, 214



231, 203, 204



229, 205, 195

Triad

The Triadic color harmony groups three colors that are evenly spaced from another and form a triangle on the color wheel.



231, 203, 204



200, 213, 196



195, 212, 228

Complementary

The Complementary color scheme is a pair of colors which are on the opposite of each other on the color wheel.



231, 203, 204



203, 231, 230

Split Complementary

Split-complementary colors differ from the complementary color scheme. The scheme consists of three colors, the original color and two neighbors of the complement color.



187, 214, 224



231, 203, 204



190, 215, 205

Square

The Square scheme is like the rectangle color scheme, but the four colors are evenly spaced on the color wheel.



231, 203, 204



212, 211, 191



185, 215, 215



206, 208, 228

Rectangle

The Rectangle color scheme consists of four colors that form a rectangle on the color wheel.



231, 203, 204



225, 206, 192



185, 215, 215



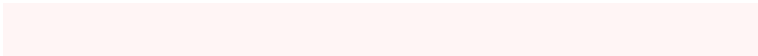
192, 213, 227

Sweetspot

The Sweet Spot groups the original color and five complimentary colors.



231, 203, 204



255, 245, 245



230, 203, 231



128, 121, 121



0, 0, 0



128, 128, 128

Same Dimension

The Same Dimension uses a secret algorithm to generate beautiful new colors.



231, 203, 204



255, 217, 218



231, 216, 203



115, 103, 104



179, 0, 6



51, 0, 2

Inverse Universe

The Inverse Universe completely reimagines the original color for something new.



231, 203, 204



255, 217, 218



203, 218, 231



115, 103, 104



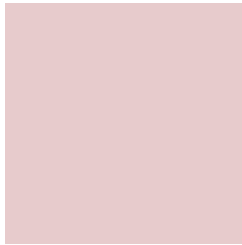
179, 0, 6



51, 0, 2

Previews

White Background



This preview shows how the RGB color 231, 203, 204 looks on a white background.

Color Contrast Check

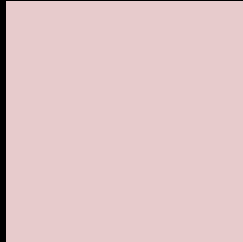
Large Text (above 18pt) WCAG AA × Fail

Any Text WCAG AA × Fail

Large Text (above 18pt) WCAG AAA × Fail

Any Text WCAG AAA × Fail

Black Background



This preview shows how the RGB color 231, 203, 204 looks on a black background.

Color Contrast Check

Large Text (above 18pt) WCAG AA ✓ Pass

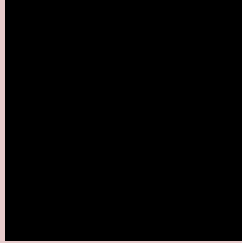
Any Text WCAG AA ✓ Pass

Large Text (above 18pt) WCAG AAA ✓ Pass

Any Text WCAG AAA ✓ Pass

If you want to check with other color combinations, try the [Color Contrast Checker](#).

RGB 231, 203, 204 Background



This preview shows how black text looks on a background with the RGB color 231, 203, 204.



This preview shows how white text looks on a background with the RGB color 231, 203, 204.

Color Blindness Simulation

Color vision deficiency is a very complex topic, and I could not describe the different causes any better than Wikipedia does, so if you want to learn more, you should check out their [article about color blindness](#).

Dichromacy



Original Color
[231](#), [203](#), [204](#)

Protanopia
[214](#), [209](#), [207](#)

Deuteranopia
[232](#), [203](#), [204](#)



Tritanopia
233, 201, 217

Trichromacy



Original Color

231, 203, 204

Protanomaly

220, 207, 206

Deuteranomaly

232, 203, 204

Tritanomaly

232, 202, 212

Monochromacy



Original Color

231, 203, 204

Achromatopsia

211, 211, 211

Achromatomaly

218, 208, 208

CSS Examples

Text

The CSS property to change the color of the text to RGB 231, 203, 204 is called "color". The color property can be set on classes, ids or directly on the HTML element.

This example shows how text in the color rgb(231, 203, 204) looks like.

```
.text, #text, p{  
    color:rgb(231, 203, 204)  
}
```

If you want to add a text shadow in that color use the text-shadow property, you can generate a text shadow directly with our [CSS Text Shadow Generator](#).

Here you see how black text with a 4 pixel rgb(231, 203, 204) colored shadow looks like.

```
.shadow{ text-shadow: 4px 4px 2px rgb(231, 203, 204) }
```

Border

The CSS property to change the border of an element to RGB 231, 203, 204 is called "border". The border property can be set on classes, ids or directly on the HTML element.

This example shows the color as border, it can be applied via the CSS property "border" or "border-color".

```
.border, #border, table{ border:4px solid rgb(231, 203, 204) }
```

If only the border color should be changed use the property `border-color`.

```
.border{ border-color:rgb(231, 203, 204) }
```

If you want to add a box shadow in that color use:

Here you see how a box with a 4 pixel `rgb(231, 203, 204)` colored shadow looks like.

```
.boxshadow{ -moz-box-shadow:4px 4px 4px  
4px rgb(231, 203, 204); -webkit-box-  
shadow:4px 4px 4px 4px rgb(231, 203, 204);  
box-shadow:4px 4px 4px 4px rgb(231, 203,  
204) }
```

Background

The CSS property to change the background color of an element to RGB 231, 203, 204 is called "background". The background property can be set on classes, ids or directly on the HTML element.

```
.background, #background, body{  
background: rgb(231, 203, 204) }
```

If only the background color should be changed can be used:

```
.background{ background-color: rgb(231,  
203, 204) }
```

This example shows the color as background, it is applied via the CSS property "background".

To optimize and compress your CSS code, you can use our [online CSS compressor and optimizer](#) based on csstidy. If you want to create a linear or radial gradient as background or border, check our [CSS Gradient Generator](#).

Hey! You found this booklet interesting? Support Converting Colors with the new Membership Option!

The pro membership hides all ads, plus gives you double the colors in the color bucket, and more awesome pro features!

[Learn more, Memberships starting at \\$2.50/m!](#)

**Follow me
on Twitter!**

@ConvertingColor