

Converting Colors

RGB(232, 156, 167)

Have a look what the booklet for
RGB(232, 156, 167) contains.

RGB(232, 156, 167)	3
<i>Conversions</i>	4
<i>Details</i>	6
<i>Harmonies</i>	11
<i>Previews</i>	23
<i>Color Blindness Simulation</i>	26
<i>CSS Examples</i>	29

Color

RGB(232, 156, 167)

Conversions

Conversions Part 1

Format	Color
Hex	E89CA7
RGB	232, 156, 167
RGB Percent	91%, 61%, 65%
CMY	0.0902, 0.3882, 0.3451
CMYK	0.00, 0.33, 0.28, 0.09
HSL	351°, 62%, 76%
HSV	351°, 33%, 91%
XYZ	52.1422, 43.7228, 42.2504
YIQ	179.9780, 41.7650, 19.5330

Conversions

Conversions Part 2

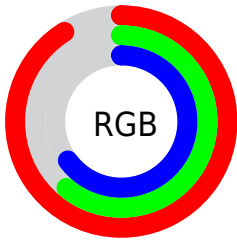
Format	Color
R _Y B	232, 156, 167
Decimal	15244455
CIE Lab	72.04, 29.82, 5.92
CIE LCh	72, 30.399, 11.232
Yxy	43.7228, 0.3775, 0.3166
Android (android.graphics.Color)	4293434535 (0xFFE89CA7)
YUV	179.9780, -6.3982, 45.6233
Hunter-Lab	66.1232, 25.0427, 8.4020

Details

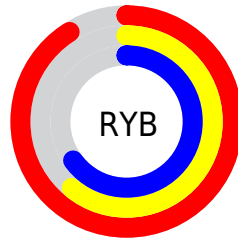
The RGB color **232, 156, 167** is a light color, and the websafe version is hex **CC9999**. A complement of this color would be **156, 232, 221**, and the grayscale version is **180, 180, 180**.

A 20% lighter version of the original color is **255, 211, 222**, and **175, 104, 115** is the 20% darker color. If you saturate the color by 10%, you get **232, 133, 147**, and if you desaturate by 10%, it is **232, 179, 187**.

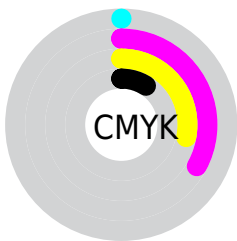
Distribution



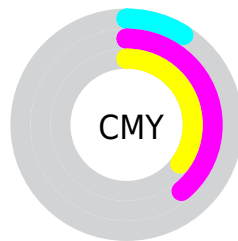
- Red (91%)
- Green (61%)
- Blue (65%)



- Red (91%)
- Yellow (61%)
- Blue (65%)



- Cyan (0%)
- Magenta (33%)
- Yellow (28%)
- Black (9%)





- Cyan (9%)
- Magenta (39%)
- Yellow (35%)

Brightness & Saturation Gradients

These gradients show how the RGB color 232, 156, 167 changes by changing the brightness by 10 percent. The first figure shows a shift by +10% for each color and the second figure -10%.

Similar to the brightness gradients but the following saturation gradients show a change of the RGB color 232, 156, 167 by changing the saturation by 10% instead.

 232, 156, 167

 232, 156, 167

255, 255, 255

 203, 130, 141

 255, 211, 222

 175, 104, 115

 255, 240, 251

 147, 79, 91


 120, 55, 67

 94, 31, 45

 68, 6, 25

 46, 0, 0


 0, 0, 0

 232, 156, 167

 232, 156, 167

 232, 133, 147

 232, 179, 187

 232, 110, 127

 232, 202, 207

 232, 86, 107

 232, 226, 227

 232, 63, 88

 232, 249, 246

 232, 40, 68

 232, 255, 255

 232, 17, 48

 232, 0, 34

Harmonies

Analogous

The Analogous color harmony consists of three colors that are next to each other on the color wheel.



220, 158, 195



232, 156, 167



228, 160, 141

Triad

The Triadic color harmony groups three colors that are evenly spaced from another and form a triangle on the color wheel.



232, 156, 167



155, 186, 134



116, 184, 228

Complementary

The Complementary color scheme is a pair of colors which are on the opposite of each other on the color wheel.



232, 156, 167



156, 232, 221

Split Complementary

Split-complementary colors differ from the complementary color scheme. The scheme consists of three colors, the original color and two neighbors of the complement color.



90, 190, 212



232, 156, 167



123, 191, 158

Square

The Square scheme is like the rectangle color scheme, but the four colors are evenly spaced on the color wheel.



232, 156, 167



186, 178, 122



95, 192, 186



156, 176, 231

Rectangle

The Rectangle color scheme consists of four colors that form a rectangle on the color wheel.



232, 156, 167



218, 166, 129



95, 192, 186



104, 187, 224

Sweetspot

The Sweet Spot groups the original color and five complimentary colors.



232, 156, 167



255, 230, 233



221, 156, 232



128, 112, 114



0, 0, 0



128, 128, 128

Same Dimension

The Same Dimension uses a secret algorithm to generate beautiful new colors.



232, 156, 167



255, 156, 170



232, 183, 156



115, 103, 105



179, 0, 26



51, 0, 7

Inverse Universe

The Inverse Universe completely reimagines the original color for something new.



232, 156, 167



255, 156, 170



156, 205, 232



115, 103, 105



179, 0, 26



51, 0, 7

Previews

White Background



This preview shows how the RGB color 232, 156, 167 looks on a white background.

Color Contrast Check

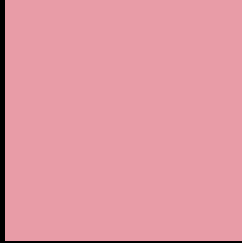
Large Text (above 18pt) WCAG AA × Fail

Any Text WCAG AA × Fail

Large Text (above 18pt) WCAG AAA × Fail

Any Text WCAG AAA × Fail

Black Background



This preview shows how the RGB color 232, 156, 167 looks on a black background.

Color Contrast Check

Large Text (above 18pt) WCAG AA ✓ Pass

Any Text WCAG AA ✓ Pass

Large Text (above 18pt) WCAG AAA ✓ Pass

Any Text WCAG AAA ✓ Pass

If you want to check with other color combinations, try the [Color Contrast Checker](#).

RGB 232, 156, 167 Background



This preview shows how black text looks on a background with the RGB color 232, 156, 167.



This preview shows how white text looks on a background with the RGB color 232, 156, 167.

Color Blindness Simulation

Color vision deficiency is a very complex topic, and I could not describe the different causes any better than Wikipedia does, so if you want to learn more, you should check out their [article about color blindness](#).

Dichromacy



Original Color
232, 156, 167

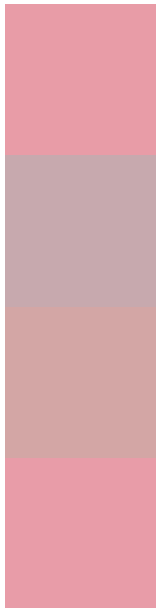
Protanopia
180, 176, 178

Deuteranopia
199, 171, 164



Tritanopia
232, 156, 168

Trichromacy



Original Color
232, 156, 167

Protanomaly
199, 169, 174

Deuteranomaly
211, 166, 165

Tritanomaly
232, 156, 168

Monochromacy



Original Color
232, 156, 167

Achromatopsia
180, 180, 180

Achromatomaly
199, 171, 175

CSS Examples

Text

The CSS property to change the color of the text to RGB 232, 156, 167 is called "color". The color property can be set on classes, ids or directly on the HTML element.

This example shows how text in the color rgb(232, 156, 167) looks like.

```
.text, #text, p{  
    color:rgb(232, 156, 167)  
}
```

If you want to add a text shadow in that color use the text-shadow property, you can generate a text shadow directly with our [CSS Text Shadow Generator](#).

Here you see how black text with a 4 pixel rgb(232, 156, 167) colored shadow looks like.

```
.shadow{ text-shadow: 4px 4px 2px rgb(232, 156, 167) }
```

Border

The CSS property to change the border of an element to RGB 232, 156, 167 is called "border". The border property can be set on classes, ids or directly on the HTML element.

This example shows the color as border, it can be applied via the CSS property "border" or "border-color".

```
.border, #border, table{ border:4px solid rgb(232, 156, 167) }
```

If only the border color should be changed use the property `border-color`.

```
.border{ border-color:rgb(232, 156, 167) }
```

If you want to add a box shadow in that color use:

Here you see how a box with a 4 pixel `rgb(232, 156, 167)` colored shadow looks like.

```
.boxshadow{ -moz-box-shadow:4px 4px 4px 4px rgb(232, 156, 167); -webkit-box-shadow:4px 4px 4px 4px rgb(232, 156, 167); box-shadow:4px 4px 4px 4px rgb(232, 156, 167) }
```

Background

The CSS property to change the background color of an element to RGB 232, 156, 167 is called "background". The background property can be set on classes, ids or directly on the HTML element.

```
.background, #background, body{  
background: rgb(232, 156, 167) }
```

If only the background color should be changed can be used:

```
.background{ background-color: rgb(232,  
156, 167) }
```

This example shows the color as background, it is applied via the CSS property "background".

To optimize and compress your CSS code, you can use our [online CSS compressor and optimizer](#) based on csstidy. If you want to create a linear or radial gradient as background or border, check our [CSS Gradient Generator](#).

Hey! You found this booklet interesting? Support Converting Colors with the new Membership Option!

The pro membership hides all ads, plus gives you double the colors in the color bucket, and more awesome pro features!

[Learn more, Memberships starting at \\$2.50/m!](#)

**Follow me
on Twitter!**

@ConvertingColor