

Converting Colors

RGB(232, 198, 185)

Have a look what the booklet for
RGB(232, 198, 185) contains.

RGB(232, 198, 185)	3
<i>Conversions</i>	4
<i>Details</i>	6
<i>Harmonies</i>	11
<i>Previews</i>	23
<i>Color Blindness Simulation</i>	26
<i>CSS Examples</i>	29

Color

RGB(232, 198, 185)

Conversions

Conversions Part 1

Format	Color
Hex	E8C6B9
RGB	232, 198, 185
RGB Percent	91%, 78%, 73%
CMY	0.0902, 0.2235, 0.2745
CMYK	0.00, 0.15, 0.20, 0.09
HSL	17°, 51%, 82%
HSV	17°, 20%, 91%
XYZ	62.2298, 61.0468, 54.4023
YIQ	206.6840, 24.4370, 3.1650

Conversions

Conversions Part 2

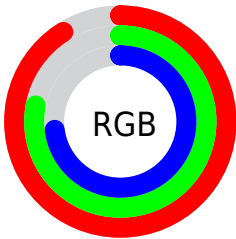
Format	Color
R _Y B	232, 203, 185
Decimal	15255225
CIE Lab	82.40, 10.01, 10.96
CIE LCh	82, 14.845, 47.587
Yxy	61.0468, 0.3502, 0.3436
Android (android.graphics.Color)	4293445305 (0xFFE8C6B9)
YUV	206.6840, -10.6902, 22.2021
Hunter-Lab	78.1324, 5.4373, 13.4101

Details

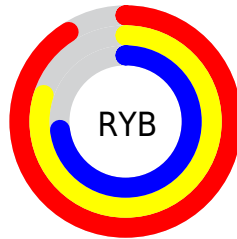
The RGB color **232, 198, 185** is a light color, and the websafe version is hex **FFCCCC**. A complement of this color would be **185, 219, 232**, and the grayscale version is **207, 207, 207**.

A 20% lighter version of the original color is **255, 255, 241**, and **176, 144, 132** is the 20% darker color. If you saturate the color by 10%, you get **232, 181, 162**, and if you desaturate by 10%, it is **232, 215, 208**.

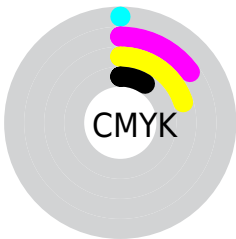
Distribution



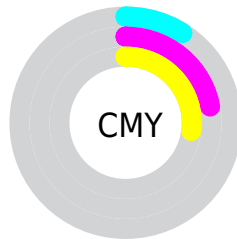
- Red (91%)
- Green (78%)
- Blue (73%)



- Red (91%)
- Yellow (80%)
- Blue (73%)



- Cyan (0%)
- Magenta (15%)
- Yellow (20%)
- Black (9%)



- Cyan (9%)
- Magenta (22%)
- Yellow (27%)

Brightness & Saturation Gradients

These gradients show how the RGB color 232, 198, 185 changes by changing the brightness by 10 percent. The first figure shows a shift by +10% for each color and the second figure -10%.


Similar to the brightness gradients but the following saturation gradients show a change of the RGB color 232, 198, 185 by changing the saturation by 10% instead.


 232, 198, 185

255, 255, 255

 255, 255, 241

 232, 198, 185

 204, 171, 158

 176, 144, 132

 149, 119, 107

 123, 94, 83


 97, 70, 59

 73, 48, 38

 49, 27, 17

 29, 1, 0


 0, 0, 0

 232, 198, 185


 232, 198, 185

 232, 181, 162

 232, 215, 208

 232, 164, 139

 232, 232, 231

 232, 148, 115

 232, 248, 255

 232, 131, 92

 232, 255, 255

 232, 114, 69

 232, 97, 46

 232, 81, 23

 232, 64, 0

Harmonies

Analogous

The Analogous color harmony consists of three colors that are next to each other on the color wheel.



235, 196, 197



232, 198, 185



222, 202, 178

Triad

The Triadic color harmony groups three colors that are evenly spaced from another and form a triangle on the color wheel.



232, 198, 185



178, 213, 199



200, 203, 231

Complementary

The Complementary color scheme is a pair of colors which are on the opposite of each other on the color wheel.



232, 198, 185



185, 219, 232

Split Complementary

Split-complementary colors differ from the complementary color scheme. The scheme consists of three colors, the original color and two neighbors of the complement color.



183, 208, 232



232, 198, 185



170, 213, 213

Square

The Square scheme is like the rectangle color scheme, but the four colors are evenly spaced on the color wheel.



232, 198, 185



191, 211, 186



172, 212, 225



218, 199, 224

Rectangle

The Rectangle color scheme consists of four colors that form a rectangle on the color wheel.



232, 198, 185



213, 205, 178



172, 212, 225



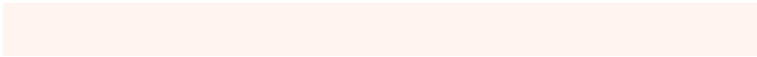
195, 205, 232

Sweetspot

The Sweet Spot groups the original color and five complimentary colors.



232, 198, 185



255, 244, 240



232, 185, 219



128, 121, 119



0, 0, 0



128, 128, 128

Same Dimension

The Same Dimension uses a secret algorithm to generate beautiful new colors.



232, 198, 185



255, 211, 194



232, 221, 185



115, 106, 103



179, 49, 0



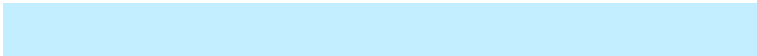
51, 14, 0

Inverse Universe

The Inverse Universe completely reimagines the original color for something new.



185, 219, 232



194, 238, 255



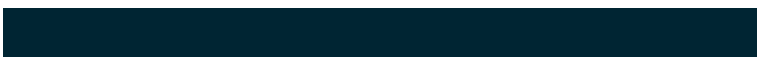
185, 196, 232



103, 112, 115



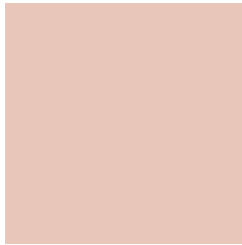
0, 129, 179



0, 37, 51

Previews

White Background



This preview shows how the RGB color 232, 198, 185 looks on a white background.

Color Contrast Check

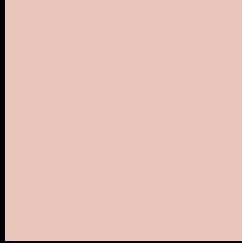
Large Text (above 18pt) WCAG AA × Fail

Any Text WCAG AA × Fail

Large Text (above 18pt) WCAG AAA × Fail

Any Text WCAG AAA × Fail

Black Background



This preview shows how the RGB color 232, 198, 185 looks on a black background.

Color Contrast Check

Large Text (above 18pt) WCAG AA ✓ Pass

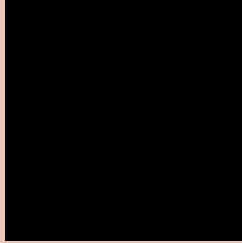
Any Text WCAG AA ✓ Pass

Large Text (above 18pt) WCAG AAA ✓ Pass

Any Text WCAG AAA ✓ Pass

If you want to check with other color combinations, try the [Color Contrast Checker](#).

RGB 232, 198, 185 Background



This preview shows how black text looks on a background with the RGB color 232, 198, 185.







This preview shows how white text looks on a background with the RGB color 232, 198, 185.

Color Blindness Simulation

Color vision deficiency is a very complex topic, and I could not describe the different causes any better than Wikipedia does, so if you want to learn more, you should check out their [article about color blindness](#).

Dichromacy

	Original Color 232, 198, 185
	Protanopia 213, 204, 188
	Deuteranopia 232, 198, 185



Tritanopia
235, 194, 209

Trichromacy



Original Color

232, 198, 185

Protanomaly

220, 202, 187

Deuteranomaly

232, 198, 185

Tritanomaly

234, 195, 200

Monochromacy



Original Color

232, 198, 185

Achromatopsia

207, 207, 207

Achromatomaly

216, 204, 199

CSS Examples

Text

The CSS property to change the color of the text to RGB 232, 198, 185 is called "color". The color property can be set on classes, ids or directly on the HTML element.

This example shows how text in the color `rgb(232, 198, 185)` looks like.

```
.text, #text, p{  
    color:rgb(232, 198, 185)  
}
```

If you want to add a text shadow in that color use the text-shadow property, you can generate a text shadow directly with our [CSS Text Shadow Generator](#).

Here you see how black text with a 4 pixel rgb(232, 198, 185) colored shadow looks like.

```
.shadow{ text-shadow: 4px 4px 2px rgb(232, 198, 185) }
```

Border

The CSS property to change the border of an element to RGB 232, 198, 185 is called "border". The border property can be set on classes, ids or directly on the HTML element.

This example shows the color as border, it can be applied via the CSS property "border" or "border-color".

```
.border, #border, table{ border:4px solid rgb(232, 198, 185) }
```

If only the border color should be changed use the property `border-color`.

```
.border{ border-color:rgb(232, 198, 185) }
```

If you want to add a box shadow in that color use:

Here you see how a box with a 4 pixel `rgb(232, 198, 185)` colored shadow looks like.

```
.boxshadow{ -moz-box-shadow:4px 4px 4px  
4px rgb(232, 198, 185); -webkit-box-  
shadow:4px 4px 4px 4px rgb(232, 198, 185);  
box-shadow:4px 4px 4px 4px rgb(232, 198,  
185) }
```

Background

The CSS property to change the background color of an element to RGB 232, 198, 185 is called "background". The background property can be set on classes, ids or directly on the HTML element.

```
.background, #background, body{  
background: rgb(232, 198, 185) }
```

If only the background color should be changed can be used:

```
.background{ background-color: rgb(232,  
198, 185) }
```

This example shows the color as background, it is applied via the CSS property "background".

To optimize and compress your CSS code, you can use our [online CSS compressor and optimizer](#) based on csstidy. If you want to create a linear or radial gradient as background or border, check our [CSS Gradient Generator](#).

Hey! You found this booklet interesting? Support Converting Colors with the new Membership Option!

The pro membership hides all ads, plus gives you double the colors in the color bucket, and more awesome pro features!

[Learn more, Memberships starting at \\$2.50/m!](#)

**Follow me
on Twitter!**

@ConvertingColor