

Converting Colors

RGB(232, 205, 206)

Have a look what the booklet for
RGB(232, 205, 206) contains.

| | |
|--|----|
| RGB(232, 205, 206) | 3 |
| <i>Conversions</i> | 4 |
| <i>Details</i> | 6 |
| <i>Harmonies</i> | 11 |
| <i>Previews</i> | 23 |
| <i>Color Blindness Simulation</i> | 26 |
| <i>CSS Examples</i> | 29 |

Color

RGB(232, 205, 206)

Conversions

Conversions Part 1

| Format | Color |
|-------------|---------------------------|
| Hex | E8CDCE |
| RGB | 232, 205, 206 |
| RGB Percent | 91%, 80%, 81% |
| CMY | 0.0902, 0.1961, 0.1922 |
| CMYK | 0.00, 0.12, 0.11, 0.09 |
| HSL | 358°, 37%, 86% |
| HSV | 358°, 12%, 91% |
| XYZ | 66.2506, 65.2747, 67.5000 |
| YIQ | 213.1870, 15.7710, 6.0350 |

Conversions

Conversions Part 2

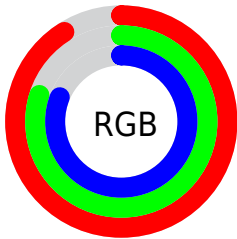
| Format | Color |
|-------------------------------------|-------------------------------|
| R _Y B | 232, 205, 206 |
| Decimal | 15257038 |
| CIE Lab | 84.63, 9.59, 2.96 |
| CIE LCh | 85, 10.040, 17.132 |
| Yxy | 65.2747, 0.3329, 0.3280 |
| Android (android.graphics.Color) | 4293447118 (0xFFE8CDCE) |
| YUV | 213.1870, -3.5432, 16.4990 |
| Hunter-Lab | 80.7927, 4.9839, 7.0198 |

Details

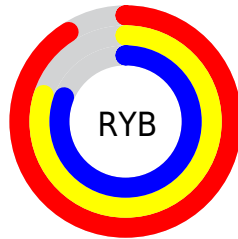
The RGB color **232, 205, 206** is a light color, and the websafe version is hex **FFCCCC**. A complement of this color would be **205, 232, 231**, and the grayscale version is **213, 213, 213**.

A 20% lighter version of the original color is 255, 255, 255, and **176, 151, 152** is the 20% darker color. If you saturate the color by 10%, you get **232, 182, 184**, and if you desaturate by 10%, it is **232, 228, 228**.

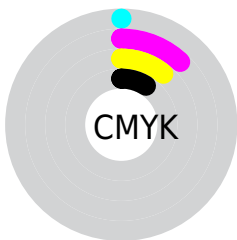
Distribution



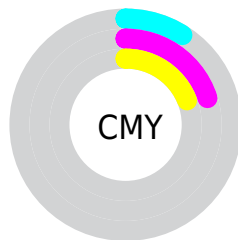
- Red (91%)
- Green (80%)
- Blue (81%)



- Red (91%)
- Yellow (80%)
- Blue (81%)



- Cyan (0%)
- Magenta (12%)
- Yellow (11%)
- Black (9%)



- Cyan (9%)
- Magenta (20%)
- Yellow (19%)

Brightness & Saturation Gradients


These gradients show how the RGB color 232, 205, 206 changes by changing the brightness by 10 percent. The first figure shows a shift by +10% for each color and the second figure -10%.

Similar to the brightness gradients but the following saturation gradients show a change of the RGB color 232, 205, 206 by changing the saturation by 10% instead.

 232, 205, 206

255, 255, 255


 232, 205, 206

 204, 178, 179


 176, 151, 152


 149, 125, 126

 123, 100, 101

 98, 76, 77

 74, 53, 54


 51, 32, 33

 31, 9, 10


 0, 0, 0

 232, 205, 206


 232, 205, 206

 232, 182, 184


 232, 228, 228

 232, 159, 161

 232, 251, 251

 232, 135, 139

 232, 255, 255

 232, 112, 117

 232, 89, 94

 232, 66, 72

 232, 43, 50

 232, 19, 27

 232, 0, 9

Harmonies

Analogous

The Analogous color harmony consists of three colors that are next to each other on the color wheel.



228, 205, 216



232, 205, 206



230, 206, 198

Triad

The Triadic color harmony groups three colors that are evenly spaced from another and form a triangle on the color wheel.



232, 205, 206



202, 215, 198



197, 213, 229

Complementary

The Complementary color scheme is a pair of colors which are on the opposite of each other on the color wheel.



232, 205, 206



205, 232, 231

Split Complementary

Split-complementary colors differ from the complementary color scheme. The scheme consists of three colors, the original color and two neighbors of the complement color.



190, 216, 225



232, 205, 206



193, 217, 207

Square

The Square scheme is like the rectangle color scheme, but the four colors are evenly spaced on the color wheel.



232, 205, 206



213, 212, 193



188, 217, 216



208, 210, 229

Rectangle

The Rectangle color scheme consists of four colors that form a rectangle on the color wheel.



232, 205, 206



226, 208, 194



188, 217, 216



194, 214, 228

Sweetspot

The Sweet Spot groups the original color and five complimentary colors.



232, 205, 206



255, 247, 248



231, 205, 232



128, 122, 123



0, 0, 0



128, 128, 128

Same Dimension

The Same Dimension uses a secret algorithm to generate beautiful new colors.



232, 205, 206



255, 219, 221



232, 217, 205



115, 103, 104



179, 0, 7



51, 0, 2

Inverse Universe

The Inverse Universe completely reimagines the original color for something new.



232, 205, 206



255, 219, 221



205, 220, 232



115, 103, 104



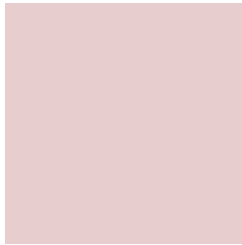
179, 0, 7



51, 0, 2

Previews

White Background



This preview shows how the RGB color 232, 205, 206 looks on a white background.

Color Contrast Check

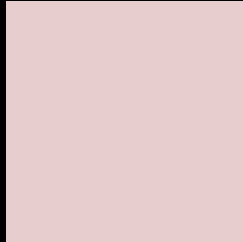
Large Text (above 18pt) WCAG AA × Fail

Any Text WCAG AA × Fail

Large Text (above 18pt) WCAG AAA × Fail

Any Text WCAG AAA × Fail

Black Background



This preview shows how the RGB color 232, 205, 206 looks on a black background.

Color Contrast Check

Large Text (above 18pt) WCAG AA ✓ Pass

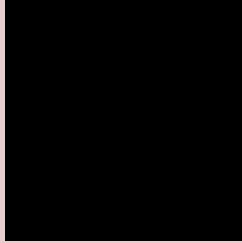
Any Text WCAG AA ✓ Pass

Large Text (above 18pt) WCAG AAA ✓ Pass

Any Text WCAG AAA ✓ Pass

If you want to check with other color combinations, try the [Color Contrast Checker](#).

RGB 232, 205, 206 Background



This preview shows how black text looks on a background with the RGB color 232, 205, 206.



This preview shows how white text looks on a background with the RGB color 232, 205, 206.

Color Blindness Simulation

Color vision deficiency is a very complex topic, and I could not describe the different causes any better than Wikipedia does, so if you want to learn more, you should check out their [article about color blindness](#).


Dichromacy



Original Color
232, 205, 206

Protanopia
216, 210, 209

Deuteranopia
234, 204, 206



Tritanopia
234, 203, 219

Trichromacy



Original Color

232, 205, 206

Protanomaly

222, 208, 208

Deuteranomaly

233, 204, 206

Tritanomaly

233, 204, 214

Monochromacy



Original Color

232, 205, 206

Achromatopsia

213, 213, 213

Achromatomaly

220, 210, 210

CSS Examples

Text

The CSS property to change the color of the text to RGB 232, 205, 206 is called "color". The color property can be set on classes, ids or directly on the HTML element.

This example shows how text in the color rgb(232, 205, 206) looks like.

```
.text, #text, p{  
    color:rgb(232, 205, 206)  
}
```

If you want to add a text shadow in that color use the text-shadow property, you can generate a text shadow directly with our [CSS Text Shadow Generator](#).

Here you see how black text with a 4 pixel rgb(232, 205, 206) colored shadow looks like.

```
.shadow{ text-shadow: 4px 4px 2px rgb(232, 205, 206) }
```

Border

The CSS property to change the border of an element to RGB 232, 205, 206 is called "border". The border property can be set on classes, ids or directly on the HTML element.

This example shows the color as border, it can be applied via the CSS property "border" or "border-color".

```
.border, #border, table{ border:4px solid rgb(232, 205, 206) }
```

If only the border color should be changed use the property `border-color`.

```
.border{ border-color:rgb(232, 205, 206) }
```

If you want to add a box shadow in that color use:

Here you see how a box with a 4 pixel `rgb(232, 205, 206)` colored shadow looks like.

```
.boxshadow{ -moz-box-shadow:4px 4px 4px  
4px rgb(232, 205, 206); -webkit-box-  
shadow:4px 4px 4px 4px rgb(232, 205, 206);  
box-shadow:4px 4px 4px 4px rgb(232, 205,  
206) }
```

Background

The CSS property to change the background color of an element to RGB 232, 205, 206 is called "background". The background property can be set on classes, ids or directly on the HTML element.

```
.background, #background, body{  
background: rgb(232, 205, 206) }
```

If only the background color should be changed can be used:

```
.background{ background-color: rgb(232,  
205, 206) }
```

This example shows the color as background, it is applied via the CSS property "background".

To optimize and compress your CSS code, you can use our [online CSS compressor and optimizer](#) based on csstidy. If you want to create a linear or radial gradient as background or border, check our [CSS Gradient Generator](#).

Hey! You found this booklet interesting? Support Converting Colors with the new Membership Option!

The pro membership hides all ads, plus gives you double the colors in the color bucket, and more awesome pro features!

[Learn more, Memberships starting at \\$2.50/m!](#)

**Follow me
on Twitter!**

@ConvertingColor