

Converting Colors

RGB(233, 131, 145)

Have a look what the booklet for
RGB(233, 131, 145) contains.

RGB(233, 131, 145)	3
<i>Conversions</i>	4
<i>Details</i>	6
<i>Harmonies</i>	11
<i>Previews</i>	23
<i>Color Blindness Simulation</i>	26
<i>CSS Examples</i>	29

Color

RGB(233, 131, 145)

Conversions

Conversions Part 1

Format	Color
Hex	E98391
RGB	233, 131, 145
RGB Percent	91%, 51%, 57%
CMY	0.0863, 0.4863, 0.4314
CMYK	0.00, 0.44, 0.38, 0.09
HSL	352°, 70%, 71%
HSV	352°, 44%, 91%
XYZ	46.8314, 35.6006, 31.1914
YIQ	163.0940, 56.2980, 25.9780

Conversions

Conversions Part 2

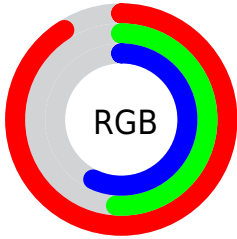
Format	Color
RYB	233, 131, 145
Decimal	15303569
CIELab	66.21, 40.55, 9.91
CIELCh	66, 41.738, 13.728
Yxy	35.6006, 0.4122, 0.3133
Android (android.graphics.Color)	4293493649 (0xFFE98391)
YUV	163.0940, -8.9203, 61.3076
Hunter-Lab	59.6662, 35.6870, 10.7716

Details

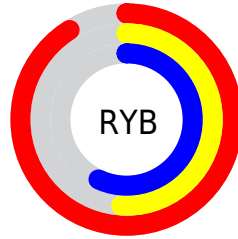
The RGB color **233, 131, 145** is a light color, and the websafe version is hex **FF9999**. A complement of this color would be **131, 233, 219**, and the grayscale version is **163, 163, 163**.

A 20% lighter version of the original color is **255, 186, 199**, and **174, 79, 95** is the 20% darker color. If you saturate the color by 10%, you get **233, 108, 125**, and if you desaturate by 10%, it is **233, 154, 165**.

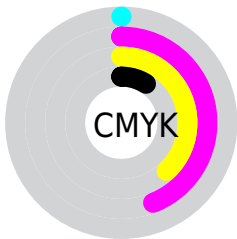
Distribution



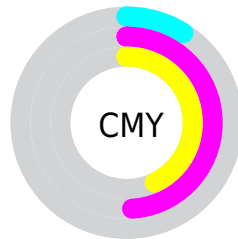
- Red (91%)
- Green (51%)
- Blue (57%)



- Red (91%)
- Yellow (51%)
- Blue (57%)



- Cyan (0%)
- Magenta (44%)
- Yellow (38%)
- Black (9%)



- Cyan (9%)
- Magenta (49%)
- Yellow (43%)

Brightness & Saturation Gradients

These gradients show how the RGB color 233, 131, 145 changes by changing the brightness by 10 percent. The first figure shows a shift by +10% for each color and the second figure -10%.

Similar to the brightness gradients but the following saturation gradients show a change of the RGB color 233, 131, 145 by changing the saturation by 10% instead.

 233, 131, 145

255, 255, 255

 255, 186, 199

 255, 214, 227

 255, 243, 255

 233, 131, 145

 203, 105, 119

 174, 79, 95

 146, 53, 71

 118, 27, 49

 90, 0, 28

 64, 0, 1

 38, 0, 1

 0, 0, 0

 233, 131, 145

 233, 131, 145

■ 233, 108, 125

■ 233, 154, 165

■ 233, 84, 105

■ 233, 178, 185

■ 233, 61, 85

■ 233, 201, 205

■ 233, 38, 65

■ 233, 224, 225

■ 233, 15, 44

■ 233, 248, 246

■ 233, 0, 32

■ 233, 255, 255

Harmonies

Analogous

The Analogous color harmony consists of three colors that are next to each other on the color wheel.



221, 133, 183



233, 131, 145



225, 139, 111

Triad

The Triadic color harmony groups three colors that are evenly spaced from another and form a triangle on the color wheel.



233, 131, 145



126, 174, 105



54, 171, 232

Complementary

The Complementary color scheme is a pair of colors which are on the opposite of each other on the color wheel.



233, 131, 145



131, 233, 219

Split Complementary

Split-complementary colors differ from the complementary color scheme. The scheme consists of three colors, the original color and two neighbors of the complement color.



0, 178, 212



233, 131, 145



74, 179, 139

Square

The Square scheme is like the rectangle color scheme, but the four colors are evenly spaced on the color wheel.



233, 131, 145



168, 164, 86



0, 181, 177



133, 159, 234

Rectangle

The Rectangle color scheme consists of four colors that form a rectangle on the color wheel.



233, 131, 145



211, 147, 94



0, 181, 177



0, 174, 227

Sweetspot

The Sweet Spot groups the original color and five complimentary colors.



233, 131, 145



255, 222, 226



218, 131, 233



128, 107, 110



0, 0, 0



128, 128, 128

Same Dimension

The Same Dimension uses a secret algorithm to generate beautiful new colors.



233, 131, 145



255, 120, 138



233, 167, 131



117, 106, 107



181, 0, 25



54, 0, 7

Inverse Universe

The Inverse Universe completely reimagines the original color for something new.



233, 131, 145



255, 120, 138



131, 197, 233



117, 106, 107



181, 0, 25



54, 0, 7

Previews

White Background



This preview shows how the RGB color 233, 131, 145 looks on a white background.

Color Contrast Check

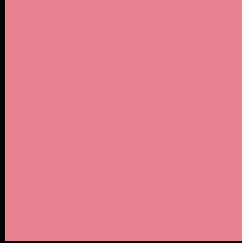
Large Text (above 18pt) WCAG AA × Fail

Any Text WCAG AA × Fail

Large Text (above 18pt) WCAG AAA × Fail

Any Text WCAG AAA × Fail

Black Background



This preview shows how the RGB color 233, 131, 145 looks on a black background.

Color Contrast Check

Large Text (above 18pt) WCAG AA ✓ Pass

Any Text WCAG AA ✓ Pass

Large Text (above 18pt) WCAG AAA ✓ Pass

Any Text WCAG AAA ✓ Pass

If you want to check with other color combinations, try the [Color Contrast Checker](#).

RGB 233, 131, 145 Background



This preview shows how black text looks on a background with the RGB color 233, 131, 145.



This preview shows how white text looks on a background with the RGB color 233, 131, 145.

Color Blindness Simulation

Color vision deficiency is a very complex topic, and I could not describe the different causes any better than Wikipedia does, so if you want to learn more, you should check out their [article about color blindness](#).


Dichromacy



Original Color
233, 131, 145

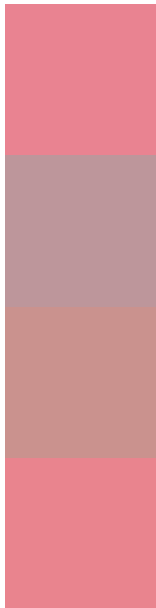
Protanopia
164, 161, 161

Deuteranopia
184, 155, 141



Tritanopia
233, 132, 141

Trichromacy



Original Color
233, 131, 145

Protanomaly
189, 150, 155

Deuteranomaly
202, 146, 142

Tritanomaly
233, 132, 142

Monochromacy



Original Color
233, 131, 145

Achromatopsia
163, 163, 163

Achromatomaly
188, 151, 156

CSS Examples

Text

The CSS property to change the color of the text to RGB 233, 131, 145 is called "color". The color property can be set on classes, ids or directly on the HTML element.

This example shows how text in the color rgb(233, 131, 145) looks like.

```
.text, #text, p{  
    color:rgb(233, 131, 145)  
}
```

If you want to add a text shadow in that color use the text-shadow property, you can generate a text shadow directly with our [CSS Text Shadow Generator](#).

Here you see how black text with a 4 pixel rgb(233, 131, 145) colored shadow looks like.

```
.shadow{ text-shadow: 4px 4px 2px rgb(233, 131, 145) }
```

Border

The CSS property to change the border of an element to RGB 233, 131, 145 is called "border". The border property can be set on classes, ids or directly on the HTML element.

This example shows the color as border, it can be applied via the CSS property "border" or "border-color".

```
.border, #border, table{ border:4px solid rgb(233, 131, 145) }
```

If only the border color should be changed use the property `border-color`.

```
.border{ border-color:rgb(233, 131, 145) }
```

If you want to add a box shadow in that color use:

Here you see how a box with a 4 pixel `rgb(233, 131, 145)` colored shadow looks like.

```
.boxshadow{ -moz-box-shadow:4px 4px 4px  
4px rgb(233, 131, 145); -webkit-box-  
shadow:4px 4px 4px 4px rgb(233, 131, 145);  
box-shadow:4px 4px 4px 4px rgb(233, 131,  
145) }
```

Background

The CSS property to change the background color of an element to RGB 233, 131, 145 is called "background". The background property can be set on classes, ids or directly on the HTML element.

```
.background, #background, body{  
background: rgb(233, 131, 145) }
```

If only the background color should be changed can be used:

```
.background{ background-color: rgb(233,  
131, 145) }
```

This example shows the color as background, it is applied via the CSS property "background".

To optimize and compress your CSS code, you can use our [online CSS compressor and optimizer](#) based on csstidy. If you want to create a linear or radial gradient as background or border, check our [CSS Gradient Generator](#).

Hey! You found this booklet interesting? Support Converting Colors with the new Membership Option!

The pro membership hides all ads, plus gives you double the colors in the color bucket, and more awesome pro features!

[Learn more, Memberships starting at \\$2.50/m!](#)

**Follow me
on Twitter!**

@ConvertingColor