

# Converting Colors

RGB(233, 198, 185)

Have a look what the booklet for  
RGB(233, 198, 185) contains.

<b>RGB(233, 198, 185)</b> .....	3
<b><i>Conversions</i></b> .....	4
<b><i>Details</i></b> .....	6
<b><i>Harmonies</i></b> .....	11
<b><i>Previews</i></b> .....	23
<b><i>Color Blindness Simulation</i></b> .....	26
<b><i>CSS Examples</i></b> .....	29

# **Color**

**RGB(233, 198, 185)**

# Conversions

## Conversions Part 1

<b>Format</b>	<b>Color</b>
Hex	E9C6B9
RGB	233, 198, 185
RGB Percent	91%, 78%, 73%
CMY	0.0863, 0.2235, 0.2745
CMYK	0.00, 0.15, 0.21, 0.09
HSL	16°, 52%, 82%
HSV	16°, 21%, 91%
XYZ	62.5553, 61.2146, 54.4175
YIQ	206.9830, 25.0330, 3.3770

# Conversions

## Conversions Part 2

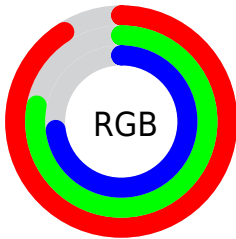
Format	Color
R <sub>Y</sub> B	233, 203, 185
Decimal	15320761
CIE Lab	82.49, 10.38, 11.10
CIE LCh	82, 15.197, 46.922
Yxy	61.2146, 0.3511, 0.3435
Android (android.graphics.Color)	4293510841 (0xFFE9C6B9)
YUV	206.9830, -10.8376, 22.8169
Hunter-Lab	78.2398, 5.7972, 13.5303

# Details

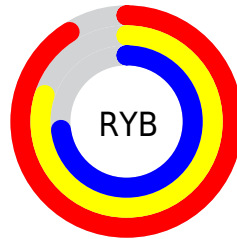
The RGB color **233, 198, 185** is a light color, and the websafe version is hex **FFCCCC**. A complement of this color would be **185, 220, 233**, and the grayscale version is **207, 207, 207**.

A 20% lighter version of the original color is **255, 255, 241**, and **177, 144, 132** is the 20% darker color. If you saturate the color by 10%, you get **233, 181, 162**, and if you desaturate by 10%, it is **233, 215, 208**.

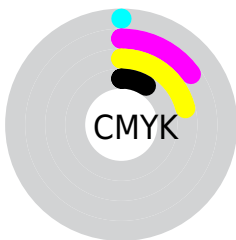
# Distribution



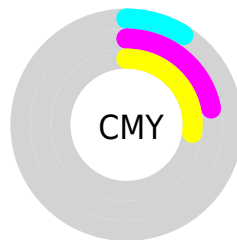
- Red (91%)
- Green (78%)
- Blue (73%)



- Red (91%)
- Yellow (80%)
- Blue (73%)



- Cyan (0%)
- Magenta (15%)
- Yellow (21%)
- Black (9%)



- Cyan (9%)
- Magenta (22%)
- Yellow (27%)

# Brightness & Saturation Gradients

These gradients show how the RGB color 233, 198, 185 changes by changing the brightness by 10 percent. The first figure shows a shift by +10% for each color and the second figure -10%.

Similar to the brightness gradients but the following saturation gradients show a change of the RGB color 233, 198, 185 by changing the saturation by 10% instead.



 233, 198, 185


255, 255, 255

 255, 255, 241

 233, 198, 185

 205, 171, 158

 177, 144, 132

 150, 118, 107

 123, 94, 83

 98, 70, 59

 73, 48, 38

 50, 27, 17

 29, 1, 0


 0, 0, 0

 233, 198, 185

 233, 198, 185

 233, 181, 162


 233, 215, 208

 233, 164, 138


 233, 232, 232

 233, 147, 115

 233, 249, 255

 233, 130, 92

 233, 255, 255

 233, 113, 68

 233, 96, 45

 233, 79, 22

 233, 63, 0

# Harmonies

## Analogous

The Analogous color harmony consists of three colors that are next to each other on the color wheel.



236, 196, 198



233, 198, 185



223, 202, 178

# Triad

The Triadic color harmony groups three colors that are evenly spaced from another and form a triangle on the color wheel.



233, 198, 185



177, 213, 198



200, 204, 232

# Complementary

The Complementary color scheme is a pair of colors which are on the opposite of each other on the color wheel.



233, 198, 185



185, 220, 233

# Split Complementary

Split-complementary colors differ from the complementary color scheme. The scheme consists of three colors, the original color and two neighbors of the complement color.



183, 208, 233



233, 198, 185



169, 214, 213

# Square

The Square scheme is like the rectangle color scheme, but the four colors are evenly spaced on the color wheel.



233, 198, 185



192, 211, 186



171, 212, 226



218, 199, 225

# Rectangle

The Rectangle color scheme consists of four colors that form a rectangle on the color wheel.



233, 198, 185



213, 205, 177



171, 212, 226



194, 205, 233

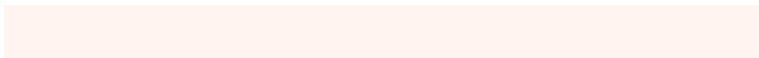


# Sweetspot

The Sweet Spot groups the original color and five complimentary colors.



233, 198, 185



255, 244, 240



233, 185, 220



128, 121, 119



0, 0, 0



128, 128, 128



# Same Dimension

The Same Dimension uses a secret algorithm to generate beautiful new colors.



233, 198, 185



255, 209, 191



233, 222, 185



117, 109, 106



181, 49, 0



54, 15, 0



# Inverse Universe

The Inverse Universe completely reimagines the original color for something new.



185, 220, 233



191, 238, 255



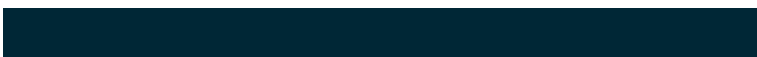
185, 196, 233



106, 114, 117



0, 132, 181

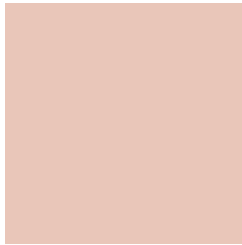


0, 39, 54



# Previews

## White Background



This preview shows how the RGB color 233, 198, 185 looks on a white background.

## Color Contrast Check

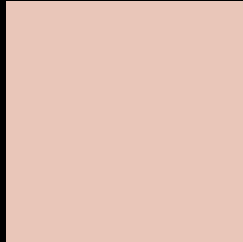
Large Text (above 18pt) WCAG AA × Fail

Any Text WCAG AA × Fail

Large Text (above 18pt) WCAG AAA × Fail

Any Text WCAG AAA × Fail

# Black Background



This preview shows how the RGB color 233, 198, 185 looks on a black background.

## Color Contrast Check

Large Text (above 18pt) WCAG AA ✓ Pass

Any Text WCAG AA ✓ Pass

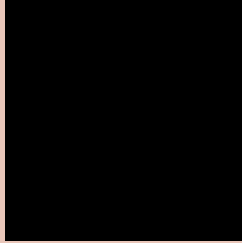
Large Text (above 18pt) WCAG AAA ✓ Pass

Any Text WCAG AAA ✓ Pass

If you want to check with other color combinations, try the [Color Contrast Checker](#).



## RGB 233, 198, 185 Background



This preview shows how black text looks on a background with the RGB color 233, 198, 185.


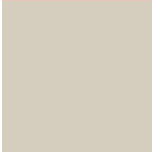




This preview shows how white text looks on a background with the RGB color 233, 198, 185.

# Color Blindness Simulation

Color vision deficiency is a very complex topic, and I could not describe the different causes any better than Wikipedia does, so if you want to learn more, you should check out their [article about color blindness](#).

## Dichromacy

	<b>Original Color</b> 233, 198, 185
	<b>Protanopia</b> 213, 205, 189
	<b>Deuteranopia</b> 233, 198, 185



**Tritanopia**  
236, 194, 209

# Trichromacy



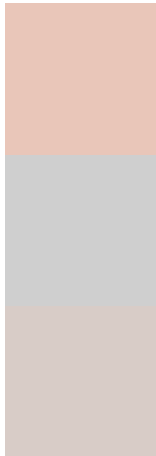
**Original Color**  
233, 198, 185

**Protanomaly**  
220, 202, 188

**Deuteranomaly**  
233, 198, 185

**Tritanomaly**  
235, 195, 200

# Monochromacy



**Original Color**  
233, 198, 185

**Achromatopsia**  
207, 207, 207

**Achromatomaly**  
216, 204, 199

# CSS Examples

## Text

The CSS property to change the color of the text to RGB 233, 198, 185 is called "color". The color property can be set on classes, ids or directly on the HTML element.

This example shows how text in the color `rgb(233, 198, 185)` looks like.

```
.text, #text, p{  
    color:rgb(233, 198, 185)  
}
```

If you want to add a text shadow in that color use the text-shadow property, you can generate a text shadow directly with our [CSS Text Shadow Generator](#).

Here you see how black text with a 4 pixel rgb(233, 198, 185) colored shadow looks like.

```
.shadow{ text-shadow: 4px 4px 2px rgb(233, 198, 185) }
```

## Border

The CSS property to change the border of an element to RGB 233, 198, 185 is called "border". The border property can be set on classes, ids or directly on the HTML element.

This example shows the color as border, it can be applied via the CSS property "border" or "border-color".

```
.border, #border, table{ border:4px solid rgb(233, 198, 185) }
```

If only the border color should be changed use the property `border-color`.

```
.border{ border-color:rgb(233, 198, 185) }
```

If you want to add a box shadow in that color use:

Here you see how a box with a 4 pixel `rgb(233, 198, 185)` colored shadow looks like.

```
.boxshadow{ -moz-box-shadow:4px 4px 4px  
4px rgb(233, 198, 185); -webkit-box-  
shadow:4px 4px 4px 4px rgb(233, 198, 185);  
box-shadow:4px 4px 4px 4px rgb(233, 198,  
185) }
```

# Background

The CSS property to change the background color of an element to RGB 233, 198, 185 is called "background". The background property can be set on classes, ids or directly on the HTML element.

```
.background, #background, body{  
background: rgb(233, 198, 185) }
```

If only the background color should be changed can be used:

```
.background{ background-color: rgb(233,  
198, 185) }
```

This example shows the color as background, it is applied via the CSS property "background".

To optimize and compress your CSS code, you can use our [online CSS compressor and optimizer](#) based on csstidy. If you want to create a linear or radial gradient as background or border, check our [CSS Gradient Generator](#).



Hey! You found this booklet interesting? Support Converting Colors with the new Membership Option!

The pro membership hides all ads, plus gives you double the colors in the color bucket, and more awesome pro features!

**[Learn more, Memberships starting at \\$2.50/m!](#)**

**Follow me  
on Twitter!**

@ConvertingColor