

Converting Colors

RGB(233, 205, 194)

Have a look what the booklet for
RGB(233, 205, 194) contains.

RGB(233, 205, 194)	3
<i>Conversions</i>	4
<i>Details</i>	6
<i>Harmonies</i>	11
<i>Previews</i>	23
<i>Color Blindness Simulation</i>	26
<i>CSS Examples</i>	29

Color

RGB(233, 205, 194)

Conversions

Conversions Part 1

Format	Color
Hex	E9CDC2
RGB	233, 205, 194
RGB Percent	91%, 80%, 76%
CMY	0.0863, 0.1961, 0.2392
CMYK	0.00, 0.12, 0.17, 0.09
HSL	17°, 47%, 84%
HSV	17°, 17%, 91%
XYZ	65.1732, 64.8813, 60.1273
YIQ	212.1180, 20.2190, 2.5150

Conversions

Conversions Part 2

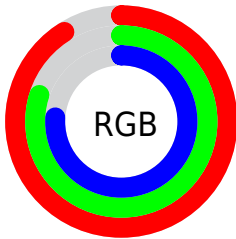
Format	Color
R _Y B	233, 209, 194
Decimal	15322562
CIE Lab	84.42, 8.05, 9.06
CIE LCh	84, 12.119, 48.368
Yxy	64.8813, 0.3427, 0.3412
Android (android.graphics.Color)	4293512642 (0xFFE9CDC2)
YUV	212.1180, -8.9322, 18.3135
Hunter-Lab	80.5489, 3.4660, 12.1261

Details

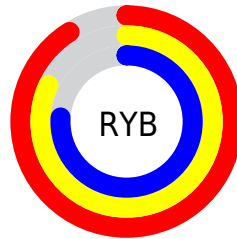
The RGB color **233, 205, 194** is a light color, and the websafe version is hex **FFCCCC**. A complement of this color would be **194, 222, 233**, and the grayscale version is **212, 212, 212**.

A 20% lighter version of the original color is 255, 255, 250, and **177, 151, 140** is the 20% darker color. If you saturate the color by 10%, you get **233, 188, 171**, and if you desaturate by 10%, it is **233, 222, 217**.

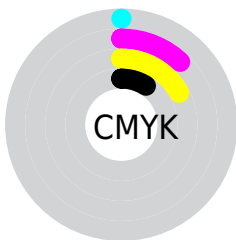
Distribution



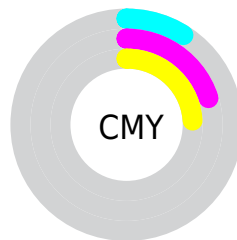
- Red (91%)
- Green (80%)
- Blue (76%)



- Red (91%)
- Yellow (82%)
- Blue (76%)



- Cyan (0%)
- Magenta (12%)
- Yellow (17%)
- Black (9%)



- Cyan (9%)
- Magenta (20%)
- Yellow (24%)

Brightness & Saturation Gradients

These gradients show how the RGB color 233, 205, 194 changes by changing the brightness by 10 percent. The first figure shows a shift by +10% for each color and the second figure -10%.

Similar to the brightness gradients but the following saturation gradients show a change of the RGB color 233, 205, 194 by changing the saturation by 10% instead.


 233, 205, 194


255, 255, 255


 255, 255, 250

 233, 205, 194

 205, 178, 167


 177, 151, 140

 150, 125, 115

 124, 100, 90

 99, 76, 67

 74, 53, 45

 51, 32, 24

 31, 9, 0


 0, 0, 0

 233, 205, 194

 233, 205, 194

 233, 188, 171


 233, 222, 217


 233, 172, 147


 233, 238, 241

 233, 155, 124

 233, 255, 255

 233, 138, 101

 233, 121, 77

 233, 105, 54

 233, 88, 31

 233, 71, 8

 233, 66, 0

Harmonies

Analogous

The Analogous color harmony consists of three colors that are next to each other on the color wheel.



236, 203, 204



233, 205, 194



225, 208, 189

Triad

The Triadic color harmony groups three colors that are evenly spaced from another and form a triangle on the color wheel.



233, 205, 194



188, 217, 206



207, 209, 232

Complementary

The Complementary color scheme is a pair of colors which are on the opposite of each other on the color wheel.



233, 205, 194



194, 222, 233

Split Complementary

Split-complementary colors differ from the complementary color scheme. The scheme consists of three colors, the original color and two neighbors of the complement color.



194, 213, 233



233, 205, 194



182, 217, 217

Square

The Square scheme is like the rectangle color scheme, but the four colors are evenly spaced on the color wheel.



233, 205, 194



199, 215, 195



184, 216, 227



221, 206, 226

Rectangle

The Rectangle color scheme consists of four colors that form a rectangle on the color wheel.



233, 205, 194



217, 211, 188



184, 216, 227



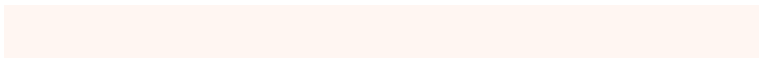
203, 211, 233

Sweetspot

The Sweet Spot groups the original color and five complimentary colors.



233, 205, 194



255, 246, 242



233, 194, 223



128, 122, 120



0, 0, 0



128, 128, 128

Same Dimension

The Same Dimension uses a secret algorithm to generate beautiful new colors.



233, 205, 194



255, 218, 204



233, 224, 194



117, 109, 106



181, 51, 0



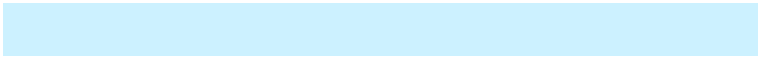
54, 15, 0

Inverse Universe

The Inverse Universe completely reimagines the original color for something new.



194, 222, 233



204, 241, 255



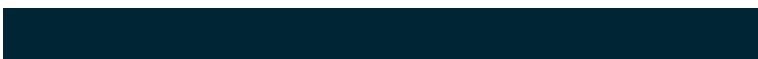
194, 203, 233



106, 114, 117



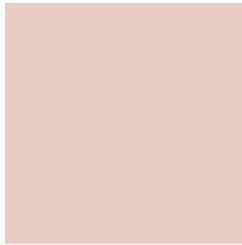
0, 130, 181



0, 38, 54

Previews

White Background



This preview shows how the RGB color 233, 205, 194 looks on a white background.

Color Contrast Check

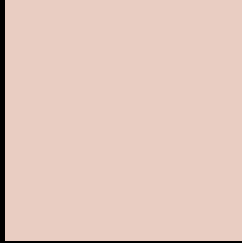
Large Text (above 18pt) WCAG AA × Fail

Any Text WCAG AA × Fail

Large Text (above 18pt) WCAG AAA × Fail

Any Text WCAG AAA × Fail

Black Background



This preview shows how the RGB color 233, 205, 194 looks on a black background.

Color Contrast Check

Large Text (above 18pt) WCAG AA ✓ Pass

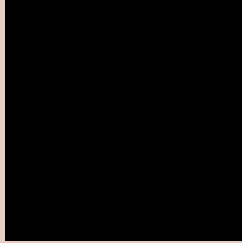
Any Text WCAG AA ✓ Pass

Large Text (above 18pt) WCAG AAA ✓ Pass

Any Text WCAG AAA ✓ Pass

If you want to check with other color combinations, try the [Color Contrast Checker](#).

RGB 233, 205, 194 Background



This preview shows how black text looks on a background with the RGB color 233, 205, 194.



This preview shows how white text looks on a background with the RGB color 233, 205, 194.

Color Blindness Simulation

Color vision deficiency is a very complex topic, and I could not describe the different causes any better than Wikipedia does, so if you want to learn more, you should check out their [article about color blindness](#).

Dichromacy



Original Color
233, 205, 194

Protanopia
218, 210, 197

Deuteranopia
237, 203, 194



Tritanopia
236, 202, 217

Trichromacy



Original Color

233, 205, 194

Protanomaly

223, 208, 196

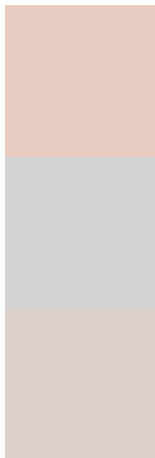
Deuteranomaly

236, 204, 194

Tritanomaly

235, 203, 209

Monochromacy



Original Color

233, 205, 194

Achromatopsia

212, 212, 212

Achromatomaly

220, 209, 205

CSS Examples

Text

The CSS property to change the color of the text to RGB 233, 205, 194 is called "color". The color property can be set on classes, ids or directly on the HTML element.

This example shows how text in the color `rgb(233, 205, 194)` looks like.

```
.text, #text, p{  
    color:rgb(233, 205, 194)  
}
```

If you want to add a text shadow in that color use the text-shadow property, you can generate a text shadow directly with our [CSS Text Shadow Generator](#).

Here you see how black text with a 4 pixel rgb(233, 205, 194) colored shadow looks like.

```
.shadow{ text-shadow: 4px 4px 2px rgb(233, 205, 194) }
```

Border

The CSS property to change the border of an element to RGB 233, 205, 194 is called "border". The border property can be set on classes, ids or directly on the HTML element.

This example shows the color as border, it can be applied via the CSS property "border" or "border-color".

```
.border, #border, table{ border:4px solid rgb(233, 205, 194) }
```

If only the border color should be changed use the property border-color.

```
.border{ border-color:rgb(233, 205, 194) }
```

If you want to add a box shadow in that color use:

Here you see how a box with a 4 pixel rgb(233, 205, 194) colored shadow looks like.

```
.boxshadow{ -moz-box-shadow:4px 4px 4px  
4px rgb(233, 205, 194); -webkit-box-  
shadow:4px 4px 4px 4px rgb(233, 205, 194);  
box-shadow:4px 4px 4px 4px rgb(233, 205,  
194) }
```

Background

The CSS property to change the background color of an element to RGB 233, 205, 194 is called "background". The background property can be set on classes, ids or directly on the HTML element.

```
.background, #background, body{  
background: rgb(233, 205, 194) }
```

If only the background color should be changed can be used:

```
.background{ background-color: rgb(233,  
205, 194) }
```

This example shows the color as background, it is applied via the CSS property "background".

To optimize and compress your CSS code, you can use our [online CSS compressor and optimizer](#) based on csstidy. If you want to create a linear or radial gradient as background or border, check our [CSS Gradient Generator](#).

Hey! You found this booklet interesting? Support Converting Colors with the new Membership Option!

The pro membership hides all ads, plus gives you double the colors in the color bucket, and more awesome pro features!

[Learn more, Memberships starting at \\$2.50/m!](#)

**Follow me
on Twitter!**

@ConvertingColor