

Converting Colors

RGB(233, 90, 119)

Have a look what the booklet for
RGB(233, 90, 119) contains.

RGB(233, 90, 119)	3
<i>Conversions</i>	4
<i>Details</i>	6
<i>Harmonies</i>	11
<i>Previews</i>	23
<i>Color Blindness Simulation</i>	26
<i>CSS Examples</i>	29

Color

RGB(233, 90, 119)

Conversions

Conversions Part 1

Format	Color
Hex	E95A77
RGB	233, 90, 119
RGB Percent	91%, 35%, 47%
CMY	0.0863, 0.6471, 0.5333
CMYK	0.00, 0.61, 0.49, 0.09
HSL	348°, 76%, 63%
HSV	348°, 61%, 91%
XYZ	40.5902, 25.9679, 20.3257
YIQ	136.0630, 75.9190, 39.3350

Conversions

Conversions Part 2

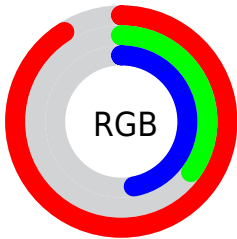
Format	Color
R _Y B	233, 90, 119
Decimal	15293047
CIE Lab	58.01, 57.53, 13.29
CIE LCh	58, 59.051, 13.011
Yxy	25.9679, 0.4672, 0.2989
Android (android.graphics.Color)	4293483127 (0xFFE95A77)
YUV	136.0630, -8.4121, 85.0137
Hunter-Lab	50.9587, 53.0032, 12.0223

Details

The RGB color **233, 90, 119** is a dark color, and the websafe version is hex **FF6699**. The color can be described as middle muted rose. A complement of this color would be **90, 233, 204**, and the grayscale version is **136, 136, 136**.

A 20% lighter version of the original color is **255, 146, 171**, and **172, 28, 71** is the 20% darker color. If you saturate the color by 10%, you get **233, 67, 100**, and if you desaturate by 10%, it is **233, 113, 138**.

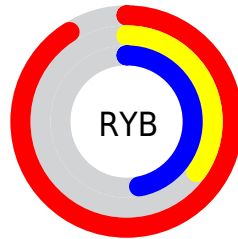
Distribution



Red (91%)

Green (35%)

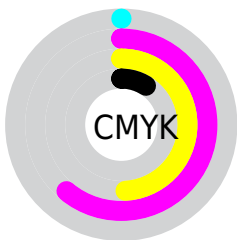
Blue (47%)



Red (91%)

Yellow (35%)

Blue (47%)

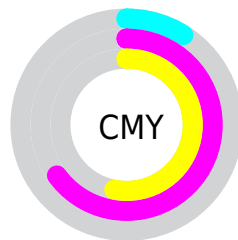


Cyan (0%)

Magenta (61%)

Yellow (49%)

Black (9%)



Cyan (9%)


Magenta (65%)

Yellow (53%)

Brightness & Saturation Gradients


These gradients show how the RGB color 233, 90, 119 changes by changing the brightness by 10 percent. The first figure shows a shift by +10% for each color and the second figure -10%.

Similar to the brightness gradients but the following saturation gradients show a change of the RGB color 233, 90, 119 by changing the saturation by 10% instead.

 233, 90, 119

 233, 90, 119

255, 255, 255

 202, 61, 94

 255, 146, 171

 172, 28, 71

 255, 174, 198

 142, 0, 49

 255, 203, 226

 113, 0, 28

 255, 232, 255

 84, 0, 1

 57, 0, 2

 15, 0, 0

 0, 0, 0

 233, 90, 119

 233, 90, 119

■ 233, 67, 100

■ 233, 113, 138

■ 233, 43, 82

■ 233, 137, 156

■ 233, 20, 63

■ 233, 160, 175

■ 233, 0, 47

■ 233, 183, 193

■ 233, 206, 212

■ 233, 230, 230

■ 233, 253, 249

■ 233, 255, 255

Harmonies

Analogous

The Analogous color harmony consists of three colors that are next to each other on the color wheel.



218, 95, 171



233, 90, 119



221, 105, 71

Triad

The Triadic color harmony groups three colors that are evenly spaced from another and form a triangle on the color wheel.



233, 90, 119



86, 156, 58



0, 153, 238

Complementary

The Complementary color scheme is a pair of colors which are on the opposite of each other on the color wheel.



233, 90, 119



90, 233, 204

Split Complementary

Split-complementary colors differ from the complementary color scheme. The scheme consists of three colors, the original color and two neighbors of the complement color.



0, 162, 209



233, 90, 119



0, 162, 107

Square

The Square scheme is like the rectangle color scheme, but the four colors are evenly spaced on the color wheel.



233, 90, 119



145, 144, 23



0, 164, 161



77, 138, 240

Rectangle

The Rectangle color scheme consists of four colors that form a rectangle on the color wheel.



233, 90, 119



202, 119, 44



0, 164, 161



0, 157, 231

Sweetspot

The Sweet Spot groups the original color and five complimentary colors.



233, 90, 119



255, 209, 218



202, 90, 233



128, 99, 105



0, 0, 0



128, 128, 128

Same Dimension

The Same Dimension uses a secret algorithm to generate beautiful new colors.



233, 90, 119



255, 66, 105



233, 131, 90



117, 106, 108



181, 0, 37



54, 0, 11

Inverse Universe

The Inverse Universe completely reimagines the original color for something new.



233, 90, 119



255, 66, 105



90, 192, 233



117, 106, 108



181, 0, 37



54, 0, 11

Previews

White Background



This preview shows how the RGB color 233, 90, 119 looks on a white background.

Color Contrast Check

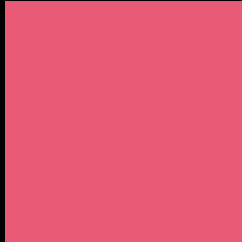
Large Text (above 18pt) WCAG AA ✓ Pass

Any Text WCAG AA ✗ Fail

Large Text (above 18pt) WCAG AAA ✗ Fail

Any Text WCAG AAA ✗ Fail

Black Background



This preview shows how the RGB color 233, 90, 119 looks on a black background.

Color Contrast Check

Large Text (above 18pt) WCAG AA ✓ Pass

Any Text WCAG AA ✓ Pass

Large Text (above 18pt) WCAG AAA ✓ Pass

Any Text WCAG AAA × Fail

If you want to check with other color combinations, try the [Color Contrast Checker](#).

RGB 233, 90, 119 Background



This preview shows how black text looks on a background with the RGB color 233, 90, 119.

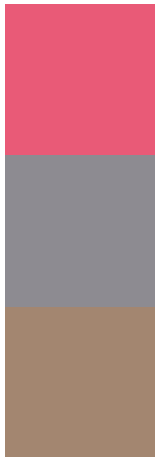


This preview shows how white text looks on a background with the RGB color 233, 90, 119.

Color Blindness Simulation

Color vision deficiency is a very complex topic, and I could not describe the different causes any better than Wikipedia does, so if you want to learn more, you should check out their [article about color blindness](#).

Dichromacy



Original Color
233, 90, 119

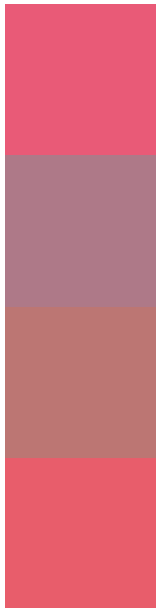
Protanopia
141, 139, 145

Deuteranopia
163, 134, 112



Tritanopia
232, 94, 100

Trichromacy



Original Color
233, 90, 119

Protanomaly
174, 121, 136

Deuteranomaly
188, 118, 115

Tritanomaly
232, 93, 107

Monochromacy



Original Color
233, 90, 119

Achromatopsia
136, 136, 136

Achromatomaly
171, 119, 130

CSS Examples

Text

The CSS property to change the color of the text to RGB 233, 90, 119 is called "color". The color property can be set on classes, ids or directly on the HTML element.

This example shows how text in the color `rgb(233, 90, 119)` looks like.

```
.text, #text, p{  
    color:rgb(233, 90, 119)  
}
```

If you want to add a text shadow in that color use the text-shadow property, you can generate a text shadow directly with our [CSS Text Shadow Generator](#).

Here you see how black text with a 4 pixel rgb(233, 90, 119) colored shadow looks like.

```
.shadow{ text-shadow: 4px 4px 2px rgb(233, 90, 119) }
```

Border

The CSS property to change the border of an element to RGB 233, 90, 119 is called "border". The border property can be set on classes, ids or directly on the HTML element.

This example shows the color as border, it can be applied via the CSS property "border" or "border-color".

```
.border, #border, table{ border:4px solid rgb(233, 90, 119) }
```

If only the border color should be changed use the property `border-color`.

```
.border{ border-color:rgb(233, 90, 119) }
```

If you want to add a box shadow in that color use:

Here you see how a box with a 4 pixel `rgb(233, 90, 119)` colored shadow looks like.

```
.boxshadow{ -moz-box-shadow:4px 4px 4px  
4px rgb(233, 90, 119); -webkit-box-  
shadow:4px 4px 4px 4px rgb(233, 90, 119);  
box-shadow:4px 4px 4px 4px rgb(233, 90,  
119) }
```

Background

The CSS property to change the background color of an element to RGB 233, 90, 119 is called "background". The background property can be set on classes, ids or directly on the HTML element.

```
.background, #background, body{  
background: rgb(233, 90, 119) }
```

If only the background color should be changed can be used:

```
.background{ background-color: rgb(233, 90,  
119) }
```

This example shows the color as background, it is applied via the CSS property "background".

To optimize and compress your CSS code, you can use our [online CSS compressor and optimizer](#) based on csstidy. If you want to create a linear or radial gradient as background or border, check our [CSS Gradient Generator](#).

Hey! You found this booklet interesting? Support Converting Colors with the new Membership Option!

The pro membership hides all ads, plus gives you double the colors in the color bucket, and more awesome pro features!

[Learn more, Memberships starting at \\$2.50/m!](#)

**Follow me
on Twitter!**

@ConvertingColor