

Converting Colors

RGB(234, 94, 188)

Have a look what the booklet for
RGB(234, 94, 188) contains.

RGB(234, 94, 188)	3
<i>Conversions</i>	4
<i>Details</i>	6
<i>Harmonies</i>	11
<i>Previews</i>	23
<i>Color Blindness Simulation</i>	26
<i>CSS Examples</i>	29

Color

RGB(234, 94, 188)

Conversions

Conversions Part 1

Format	Color
Hex	EA5EBC
RGB	234, 94, 188
RGB Percent	92%, 37%, 74%
CMY	0.0824, 0.6314, 0.2627
CMYK	0.00, 0.60, 0.20, 0.08
HSL	320°, 77%, 64%
HSV	320°, 60%, 92%
XYZ	47.0115, 29.1287, 50.7216
YIQ	146.5760, 53.2660, 58.9140

Conversions

Conversions Part 2

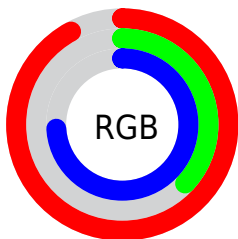
Format	Color
R _Y B	234, 94, 188
Decimal	15359676
CIE Lab	60.90, 63.98, -22.46
CIE LCh	61, 67.804, 340.654
Yxy	29.1287, 0.3706, 0.2296
Android (android.graphics.Color)	4293549756 (0xFFEA5EBC)
YUV	146.5760, 20.4220, 76.6708
Hunter-Lab	53.9710, 61.0334, -17.9407

Details

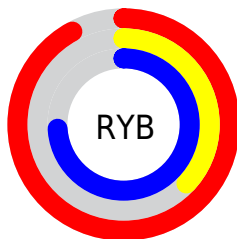
The RGB color **234, 94, 188** is a light color, and the websafe version is hex **FF66CC**. The color can be described as light muted rose. A complement of this color would be **94, 234, 140**, and the grayscale version is **146, 146, 146**.

A 20% lighter version of the original color is **255, 151, 244**, and **175, 31, 135** is the 20% darker color. If you saturate the color by 10%, you get **234, 71, 180**, and if you desaturate by 10%, it is **234, 117, 196**.

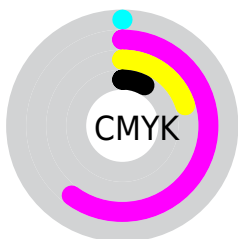
Distribution



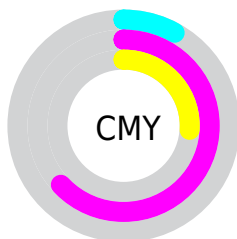
- Red (92%)
- Green (37%)
- Blue (74%)



- Red (92%)
- Yellow (37%)
- Blue (74%)



- Cyan (0%)
- Magenta (60%)
- Yellow (20%)
- Black (8%)



- Cyan (8%)
- Magenta (63%)
- Yellow (26%)

Brightness & Saturation Gradients

These gradients show how the RGB color 234, 94, 188 changes by changing the brightness by 10 percent. The first figure shows a shift by +10% for each color and the second figure -10%.

Similar to the brightness gradients but the following saturation gradients show a change of the RGB color 234, 94, 188 by changing the saturation by 10% instead.



234, 94, 188



234, 94, 188

255, 255, 255



204, 65, 161



255, 151, 244



175, 31, 135



255, 179, 255



146, 0, 109



255, 208, 255



118, 0, 85



255, 238, 255



90, 0, 61



65, 0, 39



35, 0, 16



0, 0, 0



234, 94, 188



234, 94, 188

■ 234, 71, 180

■ 234, 117, 196

■ 234, 47, 173

■ 234, 141, 203

■ 234, 24, 165

■ 234, 164, 211

■ 234, 0, 157

■ 234, 188, 219

■ 234, 0, 157

■ 234, 211, 226

■ 234, 234, 234

■ 234, 255, 242

■ 234, 255, 250

■ 234, 255, 255

Harmonies

Analogous

The Analogous color harmony consists of three colors that are next to each other on the color wheel.



176, 121, 239



234, 94, 188



254, 85, 128

Triad

The Triadic color harmony groups three colors that are evenly spaced from another and form a triangle on the color wheel.



234, 94, 188



156, 151, 0



0, 173, 224

Complementary

The Complementary color scheme is a pair of colors which are on the opposite of each other on the color wheel.



234, 94, 188



94, 234, 140

Split Complementary

Split-complementary colors differ from the complementary color scheme. The scheme consists of three colors, the original color and two neighbors of the complement color.



0, 175, 167



234, 94, 188



89, 165, 46

Square

The Square scheme is like the rectangle color scheme, but the four colors are evenly spaced on the color wheel.



234, 94, 188



207, 130, 17



0, 172, 105



0, 164, 255

Rectangle

The Rectangle color scheme consists of four colors that form a rectangle on the color wheel.



234, 94, 188



249, 95, 90



0, 172, 105



0, 174, 207

Sweetspot

The Sweet Spot groups the original color and five complimentary colors.



234, 94, 188



255, 209, 240



138, 94, 234



128, 99, 118



0, 0, 0



128, 128, 128

Same Dimension

The Same Dimension uses a secret algorithm to generate beautiful new colors.



234, 94, 188



255, 71, 195



234, 94, 120



117, 106, 113



181, 0, 122



54, 0, 36

Inverse Universe

The Inverse Universe completely reimagines the original color for something new.



234, 94, 188



255, 71, 195



94, 234, 208



117, 106, 113



181, 0, 122



54, 0, 36

Previews

White Background



This preview shows how the RGB color 234, 94, 188 looks on a white background.

Color Contrast Check

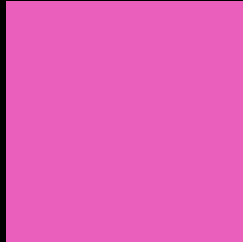
Large Text (above 18pt) WCAG AA ✓ Pass

Any Text WCAG AA ✗ Fail

Large Text (above 18pt) WCAG AAA ✗ Fail

Any Text WCAG AAA ✗ Fail

Black Background



This preview shows how the RGB color 234, 94, 188 looks on a black background.

Color Contrast Check

Large Text (above 18pt) WCAG AA ✓ Pass

Any Text WCAG AA ✓ Pass

Large Text (above 18pt) WCAG AAA ✓ Pass

Any Text WCAG AAA × Fail

If you want to check with other color combinations, try the [Color Contrast Checker](#).

RGB 234, 94, 188 Background



This preview shows how black text looks on a background with the RGB color 234, 94, 188.

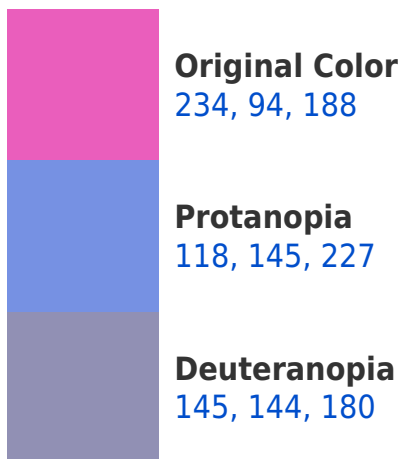


This preview shows how white text looks on a background with the RGB color 234, 94, 188.

Color Blindness Simulation

Color vision deficiency is a very complex topic, and I could not describe the different causes any better than Wikipedia does, so if you want to learn more, you should check out their [article about color blindness](#).

Dichromacy





Tritanopia
227, 111, 119

Trichromacy



Original Color

234, 94, 188



Protanomaly

160, 126, 213



Deuteranomaly

177, 126, 183



Tritanomaly

230, 105, 144

Monochromacy



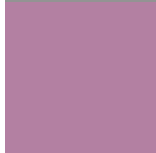
Original Color

234, 94, 188



Achromatopsia

147, 147, 147



Achromatomaly

179, 128, 162

CSS Examples

Text

The CSS property to change the color of the text to RGB 234, 94, 188 is called "color". The color property can be set on classes, ids or directly on the HTML element.

This example shows how text in the color rgb(234, 94, 188) looks like.

```
.text, #text, p{  
    color:rgb(234, 94, 188)  
}
```

If you want to add a text shadow in that color use the text-shadow property, you can generate a text shadow directly with our [CSS Text Shadow Generator](#).

Here you see how black text with a 4 pixel rgb(234, 94, 188) colored shadow looks like.

```
.shadow{ text-shadow: 4px 4px 2px rgb(234, 94, 188) }
```

Border

The CSS property to change the border of an element to RGB 234, 94, 188 is called "border". The border property can be set on classes, ids or directly on the HTML element.

This example shows the color as border, it can be applied via the CSS property "border" or "border-color".

```
.border, #border, table{ border:4px solid rgb(234, 94, 188) }
```

If only the border color should be changed use the property border-color.

```
.border{ border-color:rgb(234, 94, 188) }
```

If you want to add a box shadow in that color use:

Here you see how a box with a 4 pixel rgb(234, 94, 188) colored shadow looks like.

```
.boxshadow{ -moz-box-shadow:4px 4px 4px  
4px rgb(234, 94, 188); -webkit-box-  
shadow:4px 4px 4px 4px rgb(234, 94, 188);  
box-shadow:4px 4px 4px 4px rgb(234, 94,  
188) }
```

Background

The CSS property to change the background color of an element to RGB 234, 94, 188 is called "background". The background property can be set on classes, ids or directly on the HTML element.

```
.background, #background, body{  
background: rgb(234, 94, 188) }
```

If only the background color should be changed can be used:

```
.background{ background-color: rgb(234, 94,  
188) }
```

This example shows the color as background, it is applied via the CSS property "background".

To optimize and compress your CSS code, you can use our [online CSS compressor and optimizer](#) based on csstidy. If you want to create a linear or radial gradient as background or border, check our [CSS Gradient Generator](#).

Hey! You found this booklet interesting? Support Converting Colors with the new Membership Option!

The pro membership hides all ads, plus gives you double the colors in the color bucket, and more awesome pro features!

[Learn more, Memberships starting at \\$2.50/m!](#)

**Follow me
on Twitter!**

@ConvertingColor