

Converting Colors

RGB(235, 117, 164)

Have a look what the booklet for
RGB(235, 117, 164) contains.

RGB(235, 117, 164)	3
<i>Conversions</i>	4
<i>Details</i>	6
<i>Harmonies</i>	11
<i>Previews</i>	23
<i>Color Blindness Simulation</i>	26
<i>CSS Examples</i>	29

Color

RGB(235, 117, 164)

Conversions

Conversions Part 1

Format	Color
Hex	EB75A4
RGB	235, 117, 164
RGB Percent	92%, 46%, 64%
CMY	0.0784, 0.5412, 0.3569
CMYK	0.00, 0.50, 0.30, 0.08
HSL	336°, 75%, 69%
HSV	336°, 50%, 92%
XYZ	47.3231, 33.0651, 39.0100
YIQ	157.6400, 55.2410, 39.6330

Conversions

Conversions Part 2

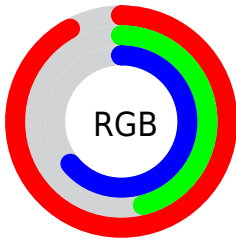
Format	Color
R _Y B	235, 117, 164
Decimal	15431076
CIE Lab	64.21, 50.54, -3.75
CIE LCh	64, 50.682, 355.758
Yxy	33.0651, 0.3963, 0.2769
Android (android.graphics.Color)	4293621156 (0xFFEB75A4)
YUV	157.6400, 3.1355, 67.8447
Hunter-Lab	57.5022, 46.2726, 0.0288

Details

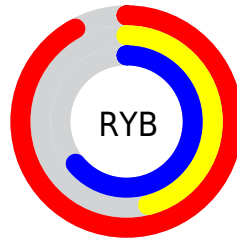
The RGB color **235, 117, 164** is a light color, and the websafe version is hex **CC6699**. A complement of this color would be **117, 235, 188**, and the grayscale version is **158, 158, 158**.

A 20% lighter version of the original color is **255, 172, 219**, and **176, 63, 112** is the 20% darker color. If you saturate the color by 10%, you get **235, 94, 150**, and if you desaturate by 10%, it is **235, 141, 178**.

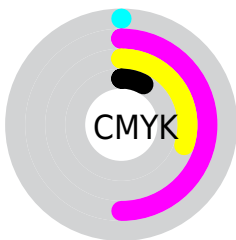
Distribution



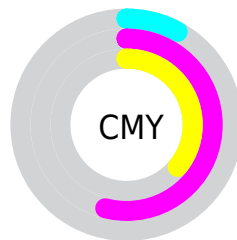
- Red (92%)
- Green (46%)
- Blue (64%)



- Red (92%)
- Yellow (46%)
- Blue (64%)



- Cyan (0%)
- Magenta (50%)
- Yellow (30%)
- Black (8%)



- Cyan (8%)
- Magenta (54%)
- Yellow (36%)

Brightness & Saturation Gradients

These gradients show how the RGB color 235, 117, 164 changes by changing the brightness by 10 percent. The first figure shows a shift by +10% for each color and the second figure -10%.

Similar to the brightness gradients but the following saturation gradients show a change of the RGB color 235, 117, 164 by changing the saturation by 10% instead.

 235, 117, 164

 235, 117, 164

255, 255, 255

 205, 90, 138

 255, 172, 219

 176, 63, 112

 255, 200, 247

 148, 34, 88

 255, 229, 255

 119, 0, 65

 92, 0, 43

 65, 0, 22

 39, 0, 1

 0, 0, 0

 235, 117, 164

 235, 117, 164

■ 235, 94, 150

■ 235, 141, 178

■ 235, 70, 136

■ 235, 164, 192

■ 235, 47, 122

■ 235, 187, 206

■ 235, 23, 107

■ 235, 211, 221

■ 235, 0, 94

■ 235, 235, 235

■ 235, 255, 249

■ 235, 255, 255

Harmonies

Analogous

The Analogous color harmony consists of three colors that are next to each other on the color wheel.



205, 128, 207



235, 117, 164



239, 120, 119

Triad

The Triadic color harmony groups three colors that are evenly spaced from another and form a triangle on the color wheel.



235, 117, 164



143, 165, 70



0, 173, 230

Complementary

The Complementary color scheme is a pair of colors which are on the opposite of each other on the color wheel.



235, 117, 164



117, 235, 188

Split Complementary

Split-complementary colors differ from the complementary color scheme. The scheme consists of three colors, the original color and two neighbors of the complement color.



0, 178, 194



235, 117, 164



86, 174, 103

Square

The Square scheme is like the rectangle color scheme, but the four colors are evenly spaced on the color wheel.



235, 117, 164



187, 151, 62



0, 178, 147



39, 162, 246

Rectangle

The Rectangle color scheme consists of four colors that form a rectangle on the color wheel.



235, 117, 164



229, 129, 93



0, 178, 147



0, 175, 219

Sweetspot

The Sweet Spot groups the original color and five complimentary colors.



235, 117, 164



255, 217, 232



188, 117, 235



128, 105, 114



0, 0, 0



128, 128, 128

Same Dimension

The Same Dimension uses a secret algorithm to generate beautiful new colors.



235, 117, 164



255, 102, 163



235, 129, 117



117, 106, 110



181, 0, 72



54, 0, 21

Inverse Universe

The Inverse Universe completely reimagines the original color for something new.



235, 117, 164



255, 102, 163



117, 223, 235



117, 106, 110



181, 0, 72



54, 0, 21

Previews

White Background



This preview shows how the RGB color 235, 117, 164 looks on a white background.

Color Contrast Check

Large Text (above 18pt) WCAG AA × Fail

Any Text WCAG AA × Fail

Large Text (above 18pt) WCAG AAA × Fail

Any Text WCAG AAA × Fail

Black Background



This preview shows how the RGB color 235, 117, 164 looks on a black background.

Color Contrast Check

Large Text (above 18pt) WCAG AA ✓ Pass

Any Text WCAG AA ✓ Pass

Large Text (above 18pt) WCAG AAA ✓ Pass

Any Text WCAG AAA ✓ Pass

If you want to check with other color combinations, try the [Color Contrast Checker](#).

RGB 235, 117, 164 Background



This preview shows how black text looks on a background with the RGB color 235, 117, 164.

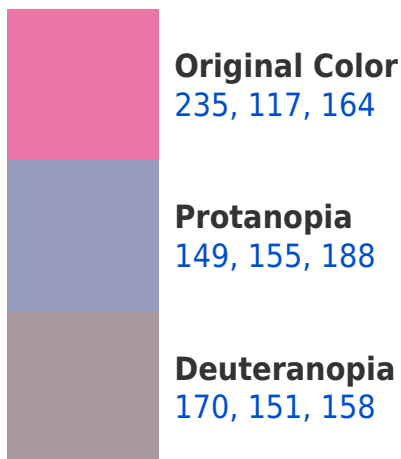


This preview shows how white text looks on a background with the RGB color 235, 117, 164.

Color Blindness Simulation

Color vision deficiency is a very complex topic, and I could not describe the different causes any better than Wikipedia does, so if you want to learn more, you should check out their [article about color blindness](#).

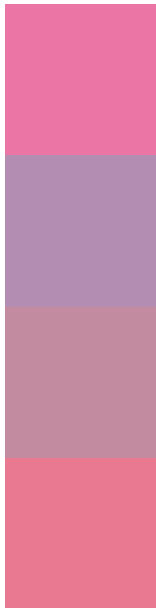
Dichromacy





Tritanopia
232, 123, 132

Trichromacy



Original Color
235, 117, 164

Protanomaly
180, 141, 179

Deuteranomaly
194, 139, 160

Tritanomaly
233, 121, 144

Monochromacy



Original Color
235, 117, 164

Achromatopsia
158, 158, 158

Achromatomaly
186, 143, 160

CSS Examples

Text

The CSS property to change the color of the text to RGB 235, 117, 164 is called "color". The color property can be set on classes, ids or directly on the HTML element.

This example shows how text in the color `rgb(235, 117, 164)` looks like.

```
.text, #text, p{  
    color:rgb(235, 117, 164)  
}
```

If you want to add a text shadow in that color use the text-shadow property, you can generate a text shadow directly with our [CSS Text Shadow Generator](#).

Here you see how black text with a 4 pixel rgb(235, 117, 164) colored shadow looks like.

```
.shadow{ text-shadow: 4px 4px 2px rgb(235, 117, 164) }
```

Border

The CSS property to change the border of an element to RGB 235, 117, 164 is called "border". The border property can be set on classes, ids or directly on the HTML element.

This example shows the color as border, it can be applied via the CSS property "border" or "border-color".

```
.border, #border, table{ border:4px solid rgb(235, 117, 164) }
```

If only the border color should be changed use the property border-color.

```
.border{ border-color:rgb(235, 117, 164) }
```

If you want to add a box shadow in that color use:

Here you see how a box with a 4 pixel rgb(235, 117, 164) colored shadow looks like.

```
.boxshadow{ -moz-box-shadow:4px 4px 4px  
4px rgb(235, 117, 164); -webkit-box-  
shadow:4px 4px 4px 4px rgb(235, 117, 164);  
box-shadow:4px 4px 4px 4px rgb(235, 117,  
164) }
```

Background

The CSS property to change the background color of an element to RGB 235, 117, 164 is called "background". The background property can be set on classes, ids or directly on the HTML element.

```
.background, #background, body{  
background: rgb(235, 117, 164) }
```

If only the background color should be changed can be used:

```
.background{ background-color: rgb(235,  
117, 164) }
```

This example shows the color as background, it is applied via the CSS property "background".

To optimize and compress your CSS code, you can use our [online CSS compressor and optimizer](#) based on csstidy. If you want to create a linear or radial gradient as background or border, check our [CSS Gradient Generator](#).

Hey! You found this booklet interesting? Support Converting Colors with the new Membership Option!

The pro membership hides all ads, plus gives you double the colors in the color bucket, and more awesome pro features!

[Learn more, Memberships starting at \\$2.50/m!](#)

**Follow me
on Twitter!**

@ConvertingColor