

Converting Colors

RGB(235, 216, 217)

Have a look what the booklet for
RGB(235, 216, 217) contains.

RGB(235, 216, 217)	3
<i>Conversions</i>	4
<i>Details</i>	6
<i>Harmonies</i>	11
<i>Previews</i>	23
<i>Color Blindness Simulation</i>	26
<i>CSS Examples</i>	29

Color

RGB(235, 216, 217)

Conversions

Conversions Part 1

Format	Color
Hex	EBD8D9
RGB	235, 216, 217
RGB Percent	92%, 85%, 85%
CMY	0.0784, 0.1529, 0.1490
CMYK	0.00, 0.08, 0.08, 0.08
HSL	357°, 32%, 88%
HSV	357°, 8%, 92%
XYZ	71.3412, 71.7837, 75.7412
YIQ	221.7950, 11.0030, 4.3390

Conversions

Conversions Part 2

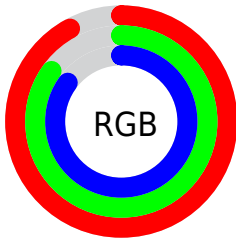
Format	Color
R _Y B	235, 216, 217
Decimal	15456473
CIE Lab	87.86, 6.71, 1.87
CIE LCh	88, 6.963, 15.552
Yxy	71.7837, 0.3260, 0.3280
Android (android.graphics.Color)	4293646553 (0xFFE8D9)
YUV	221.7950, -2.3639, 11.5808
Hunter-Lab	84.7252, 2.0332, 6.3046

Details

The RGB color **235, 216, 217** is a light color, and the websafe version is hex **CCCCCC**. A complement of this color would be **216, 235, 234**, and the grayscale version is **222, 222, 222**.

A 20% lighter version of the original color is **255, 255, 255**, and **179, 161, 162** is the 20% darker color. If you saturate the color by 10%, you get **235, 193, 195**, and if you desaturate by 10%, it is **235, 240, 239**.

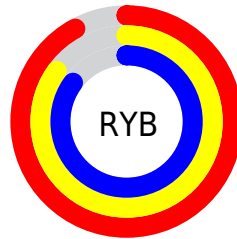
Distribution



Red (92%)

Green (85%)

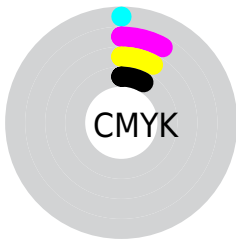
Blue (85%)



Red (92%)

Yellow (85%)

Blue (85%)

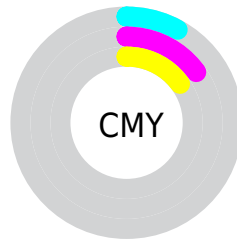


Cyan (0%)

Magenta (8%)

Yellow (8%)

Black (8%)



Cyan (8%)

Magenta (15%)

Yellow (15%)

Brightness & Saturation Gradients


These gradients show how the RGB color 235, 216, 217 changes by changing the brightness by 10 percent. The first figure shows a shift by +10% for each color and the second figure -10%.

Similar to the brightness gradients but the following saturation gradients show a change of the RGB color 235, 216, 217 by changing the saturation by 10% instead.


 235, 216, 217

255, 255, 255


 235, 216, 217

 207, 188, 189

 179, 161, 162


 152, 135, 136

 126, 110, 111

 101, 85, 86

 77, 62, 63


 54, 40, 41

 33, 20, 21

 0, 0, 0

 235, 216, 217

 235, 216, 217


 235, 193, 195

 235, 240, 239

 235, 169, 172

 235, 255, 255

 235, 146, 150

 235, 122, 128

 235, 98, 106

 235, 75, 83

 235, 52, 61

 235, 28, 39

 235, 4, 17

Harmonies

Analogous

The Analogous color harmony consists of three colors that are next to each other on the color wheel.



232, 216, 224



235, 216, 217



234, 217, 211

Triad

The Triadic color harmony groups three colors that are evenly spaced from another and form a triangle on the color wheel.



235, 216, 217



214, 223, 211



210, 222, 233

Complementary

The Complementary color scheme is a pair of colors which are on the opposite of each other on the color wheel.



235, 216, 217



216, 235, 234

Split Complementary

Split-complementary colors differ from the complementary color scheme. The scheme consists of three colors, the original color and two neighbors of the complement color.



205, 224, 229



235, 216, 217



208, 224, 217

Square

The Square scheme is like the rectangle color scheme, but the four colors are evenly spaced on the color wheel.



235, 216, 217



222, 221, 208



205, 224, 224



218, 220, 233

Rectangle

The Rectangle color scheme consists of four colors that form a rectangle on the color wheel.



235, 216, 217



231, 218, 208



205, 224, 224



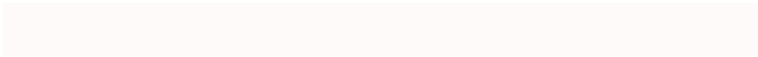
208, 222, 232

Sweetspot

The Sweet Spot groups the original color and five complimentary colors.



235, 216, 217



255, 250, 250



234, 216, 235



128, 125, 125



0, 0, 0



128, 128, 128

Same Dimension

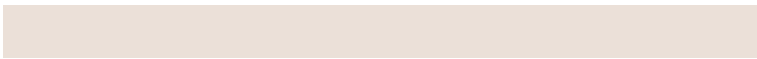
The Same Dimension uses a secret algorithm to generate beautiful new colors.



235, 216, 217



255, 230, 231



235, 224, 216



117, 106, 106



181, 0, 10



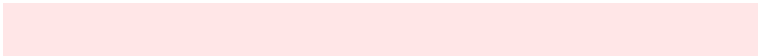
54, 0, 3

Inverse Universe

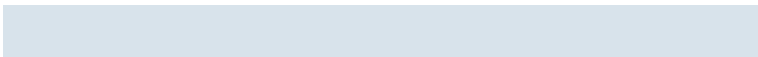
The Inverse Universe completely reimagines the original color for something new.



235, 216, 217



255, 230, 231



216, 227, 235



117, 106, 106



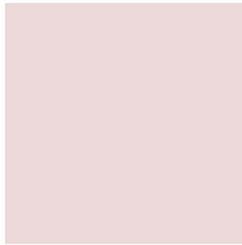
181, 0, 10



54, 0, 3

Previews

White Background



This preview shows how the RGB color 235, 216, 217 looks on a white background.

Color Contrast Check

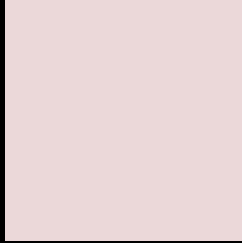
Large Text (above 18pt) WCAG AA × Fail

Any Text WCAG AA × Fail

Large Text (above 18pt) WCAG AAA × Fail

Any Text WCAG AAA × Fail

Black Background



This preview shows how the RGB color 235, 216, 217 looks on a black background.

Color Contrast Check

Large Text (above 18pt) WCAG AA ✓ Pass

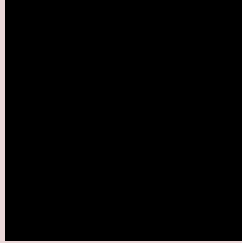
Any Text WCAG AA ✓ Pass

Large Text (above 18pt) WCAG AAA ✓ Pass

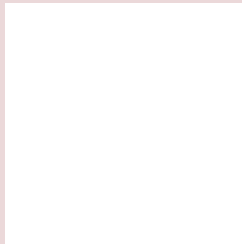
Any Text WCAG AAA ✓ Pass

If you want to check with other color combinations, try the [Color Contrast Checker](#).

RGB 235, 216, 217 Background



This preview shows how black text looks on a background with the RGB color 235, 216, 217.

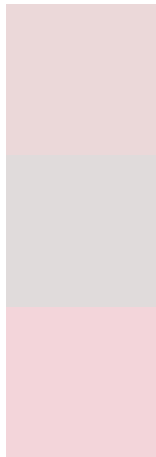


This preview shows how white text looks on a background with the RGB color 235, 216, 217.

Color Blindness Simulation

Color vision deficiency is a very complex topic, and I could not describe the different causes any better than Wikipedia does, so if you want to learn more, you should check out their [article about color blindness](#).

Dichromacy



Original Color
235, 216, 217

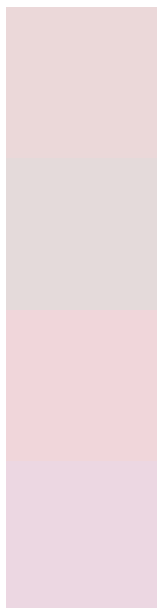
Protanopia
224, 219, 219

Deuteranopia
243, 213, 218



Tritanopia
237, 214, 231

Trichromacy



Original Color

235, 216, 217

Protanomaly

228, 218, 218

Deuteranomaly

240, 214, 218

Tritanomaly

236, 215, 226

Monochromacy



Original Color

235, 216, 217

Achromatopsia

222, 222, 222

Achromatomaly

227, 220, 220

CSS Examples

Text

The CSS property to change the color of the text to RGB 235, 216, 217 is called "color". The color property can be set on classes, ids or directly on the HTML element.

This example shows how text in the color rgb(235, 216, 217) looks like.

```
.text, #text, p{  
    color:rgb(235, 216, 217)  
}
```

If you want to add a text shadow in that color use the text-shadow property, you can generate a text shadow directly with our [CSS Text Shadow Generator](#).

Here you see how black text with a 4 pixel rgb(235, 216, 217) colored shadow looks like.

```
.shadow{ text-shadow: 4px 4px 2px rgb(235, 216, 217) }
```

Border

The CSS property to change the border of an element to RGB 235, 216, 217 is called "border". The border property can be set on classes, ids or directly on the HTML element.

This example shows the color as border, it can be applied via the CSS property "border" or "border-color".

```
.border, #border, table{ border:4px solid rgb(235, 216, 217) }
```

If only the border color should be changed use the property `border-color`.

```
.border{ border-color:rgb(235, 216, 217) }
```

If you want to add a box shadow in that color use:

Here you see how a box with a 4 pixel `rgb(235, 216, 217)` colored shadow looks like.

```
.boxshadow{ -moz-box-shadow:4px 4px 4px  
4px rgb(235, 216, 217); -webkit-box-  
shadow:4px 4px 4px 4px rgb(235, 216, 217);  
box-shadow:4px 4px 4px 4px rgb(235, 216,  
217) }
```

Background

The CSS property to change the background color of an element to RGB 235, 216, 217 is called "background". The background property can be set on classes, ids or directly on the HTML element.

```
.background, #background, body{  
background: rgb(235, 216, 217) }
```

If only the background color should be changed can be used:

```
.background{ background-color: rgb(235,  
216, 217) }
```

This example shows the color as background, it is applied via the CSS property "background".

To optimize and compress your CSS code, you can use our [online CSS compressor and optimizer](#) based on csstidy. If you want to create a linear or radial gradient as background or border, check our [CSS Gradient Generator](#).

Hey! You found this booklet interesting? Support Converting Colors with the new Membership Option!

The pro membership hides all ads, plus gives you double the colors in the color bucket, and more awesome pro features!

[Learn more, Memberships starting at \\$2.50/m!](#)

**Follow me
on Twitter!**

@ConvertingColor