

Converting Colors

RGB(236, 110, 133)

Have a look what the booklet for
RGB(236, 110, 133) contains.

RGB(236, 110, 133)	3
<i>Conversions</i>	4
<i>Details</i>	6
<i>Harmonies</i>	11
<i>Previews</i>	23
<i>Color Blindness Simulation</i>	26
<i>CSS Examples</i>	29

Color

RGB(236, 110, 133)

Conversions

Conversions Part 1

Format	Color
Hex	EC6E85
RGB	236, 110, 133
RGB Percent	93%, 43%, 52%
CMY	0.0745, 0.5686, 0.4784
CMYK	0.00, 0.53, 0.44, 0.07
HSL	349°, 77%, 68%
HSV	349°, 53%, 93%
XYZ	44.4016, 30.6782, 25.7716
YIQ	150.2960, 67.7130, 33.8650

Conversions

Conversions Part 2

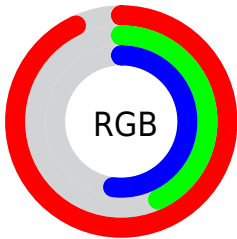
Format	Color
R _Y B	236, 110, 133
Decimal	15494789
CIE Lab	62.24, 50.74, 11.17
CIE LCh	62, 51.958, 12.417
Yxy	30.6782, 0.4403, 0.3042
Android (android.graphics.Color)	4293684869 (0xFFEC6E85)
YUV	150.2960, -8.5269, 75.1624
Hunter-Lab	55.3879, 46.1655, 11.1843

Details

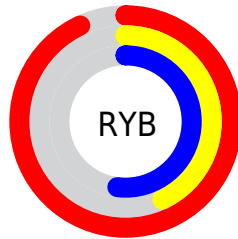
The RGB color **236, 110, 133** is a light color, and the websafe version is hex **FF6699**. A complement of this color would be **110, 236, 213**, and the grayscale version is **150, 150, 150**.

A 20% lighter version of the original color is **255, 165, 186**, and **176, 56, 84** is the 20% darker color. If you saturate the color by 10%, you get **236, 86, 114**, and if you desaturate by 10%, it is **236, 134, 152**.

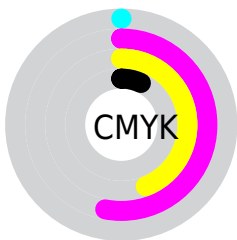
Distribution



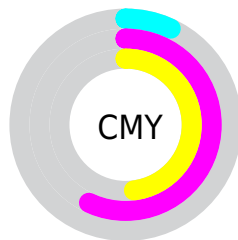
- Red (93%)
- Green (43%)
- Blue (52%)



- Red (93%)
- Yellow (43%)
- Blue (52%)



- Cyan (0%)
- Magenta (53%)
- Yellow (44%)
- Black (7%)



- Cyan (7%)
- Magenta (57%)
- Yellow (48%)

Brightness & Saturation Gradients

These gradients show how the RGB color 236, 110, 133 changes by changing the brightness by 10 percent. The first figure shows a shift by +10% for each color and the second figure -10%.

Similar to the brightness gradients but the following saturation gradients show a change of the RGB color 236, 110, 133 by changing the saturation by 10% instead.

 236, 110, 133

 236, 110, 133

255, 255, 255

 206, 83, 108

 255, 165, 186

 176, 56, 84

 255, 193, 214

 147, 25, 61

 255, 222, 242

 118, 0, 39

 255, 251, 255


 89, 0, 19

 63, 0, 1

 31, 0, 1

 0, 0, 0

 236, 110, 133

 236, 110, 133

■ 236, 86, 114

■ 236, 134, 152

■ 236, 63, 94

■ 236, 157, 172

■ 236, 39, 75

■ 236, 181, 191

■ 236, 16, 56

■ 236, 204, 210

■ 236, 0, 43

■ 236, 228, 229

■ 236, 252, 249

■ 236, 255, 255

Harmonies

Analogous

The Analogous color harmony consists of three colors that are next to each other on the color wheel.



221, 114, 179



236, 110, 133



227, 121, 90

Triad

The Triadic color harmony groups three colors that are evenly spaced from another and form a triangle on the color wheel.



236, 110, 133



107, 165, 79



0, 163, 238

Complementary

The Complementary color scheme is a pair of colors which are on the opposite of each other on the color wheel.



236, 110, 133



110, 236, 213

Split Complementary

Split-complementary colors differ from the complementary color scheme. The scheme consists of three colors, the original color and two neighbors of the complement color.



0, 171, 211



236, 110, 133



1, 171, 121

Square

The Square scheme is like the rectangle color scheme, but the four colors are evenly spaced on the color wheel.



236, 110, 133



158, 154, 55



0, 173, 169



103, 149, 241

Rectangle

The Rectangle color scheme consists of four colors that form a rectangle on the color wheel.



236, 110, 133



210, 132, 68



0, 173, 169



0, 166, 231

Sweetspot

The Sweet Spot groups the original color and five complimentary colors.



236, 110, 133



255, 214, 222



213, 110, 236



128, 103, 108



0, 0, 0



128, 128, 128

Same Dimension

The Same Dimension uses a secret algorithm to generate beautiful new colors.



236, 110, 133



255, 92, 122



236, 150, 110



117, 106, 108



181, 0, 33



54, 0, 10

Inverse Universe

The Inverse Universe completely reimagines the original color for something new.



236, 110, 133



255, 92, 122



110, 196, 236



117, 106, 108



181, 0, 33



54, 0, 10

Previews

White Background



This preview shows how the RGB color 236, 110, 133 looks on a white background.

Color Contrast Check

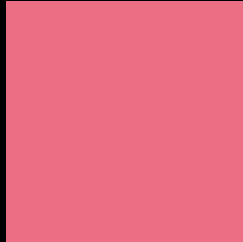
Large Text (above 18pt) WCAG AA × Fail

Any Text WCAG AA × Fail

Large Text (above 18pt) WCAG AAA × Fail

Any Text WCAG AAA × Fail

Black Background



This preview shows how the RGB color 236, 110, 133 looks on a black background.

Color Contrast Check

Large Text (above 18pt) WCAG AA ✓ Pass

Any Text WCAG AA ✓ Pass

Large Text (above 18pt) WCAG AAA ✓ Pass

Any Text WCAG AAA ✓ Pass

If you want to check with other color combinations, try the [Color Contrast Checker](#).

RGB 236, 110, 133 Background



This preview shows how black text looks on a background with the RGB color 236, 110, 133.

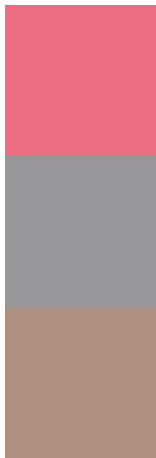


This preview shows how white text looks on a background with the RGB color 236, 110, 133.

Color Blindness Simulation

Color vision deficiency is a very complex topic, and I could not describe the different causes any better than Wikipedia does, so if you want to learn more, you should check out their [article about color blindness](#).

Dichromacy



Original Color
236, 110, 133

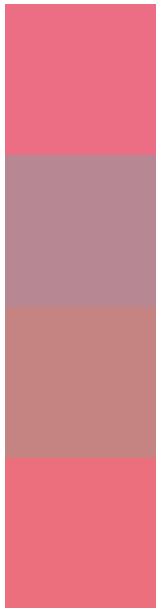
Protanopia
152, 150, 155

Deuteranopia
174, 145, 127



Tritanopia
235, 112, 120

Trichromacy



Original Color
236, 110, 133

Protanomaly
183, 135, 147

Deuteranomaly
197, 132, 129

Tritanomaly
235, 111, 125

Monochromacy



Original Color
236, 110, 133

Achromatopsia
150, 150, 150

Achromatomaly
181, 135, 144

CSS Examples

Text

The CSS property to change the color of the text to RGB 236, 110, 133 is called "color". The color property can be set on classes, ids or directly on the HTML element.

This example shows how text in the color `rgb(236, 110, 133)` looks like.

```
.text, #text, p{  
    color:rgb(236, 110, 133)  
}
```

If you want to add a text shadow in that color use the text-shadow property, you can generate a text shadow directly with our [CSS Text Shadow Generator](#).

Here you see how black text with a 4 pixel rgb(236, 110, 133) colored shadow looks like.

```
.shadow{ text-shadow: 4px 4px 2px rgb(236, 110, 133) }
```

Border

The CSS property to change the border of an element to RGB 236, 110, 133 is called "border". The border property can be set on classes, ids or directly on the HTML element.

This example shows the color as border, it can be applied via the CSS property "border" or "border-color".

```
.border, #border, table{ border:4px solid rgb(236, 110, 133) }
```

If only the border color should be changed use the property `border-color`.

```
.border{ border-color:rgb(236, 110, 133) }
```

If you want to add a box shadow in that color use:

Here you see how a box with a 4 pixel `rgb(236, 110, 133)` colored shadow looks like.

```
.boxshadow{ -moz-box-shadow:4px 4px 4px  
4px rgb(236, 110, 133); -webkit-box-  
shadow:4px 4px 4px 4px rgb(236, 110, 133);  
box-shadow:4px 4px 4px 4px rgb(236, 110,  
133) }
```

Background

The CSS property to change the background color of an element to RGB 236, 110, 133 is called "background". The background property can be set on classes, ids or directly on the HTML element.

```
.background, #background, body{  
background: rgb(236, 110, 133) }
```

If only the background color should be changed can be used:

```
.background{ background-color: rgb(236,  
110, 133) }
```

This example shows the color as background, it is applied via the CSS property "background".

To optimize and compress your CSS code, you can use our [online CSS compressor and optimizer](#) based on csstidy. If you want to create a linear or radial gradient as background or border, check our [CSS Gradient Generator](#).

Hey! You found this booklet interesting? Support Converting Colors with the new Membership Option!

The pro membership hides all ads, plus gives you double the colors in the color bucket, and more awesome pro features!

[Learn more, Memberships starting at \\$2.50/m!](#)

**Follow me
on Twitter!**

@ConvertingColor