

Converting Colors

RGB(237, 213, 196)

Have a look what the booklet for
RGB(237, 213, 196) contains.

| | |
|--|----|
| RGB(237, 213, 196) | 3 |
| <i>Conversions</i> | 4 |
| <i>Details</i> | 6 |
| <i>Harmonies</i> | 11 |
| <i>Previews</i> | 23 |
| <i>Color Blindness Simulation</i> | 26 |
| <i>CSS Examples</i> | 29 |

Color

RGB(237, 213, 196)

Conversions

Conversions Part 1

| Format | Color |
|---------------|----------------------------|
| Hex | EDD5C4 |
| RGB | 237, 213, 196 |
| RGB Percent | 93%, 84%, 77% |
| CMY | 0.0706, 0.1647, 0.2314 |
| CMYK | 0.00, 0.10, 0.17, 0.07 |
| HSL | 25°, 53%, 85% |
| HSV | 25°, 17%, 93% |
| XYZ | 68.6831, 69.5785, 62.0346 |
| YIQ | 218.2380, 19.7610, -0.1990 |

Conversions

Conversions Part 2

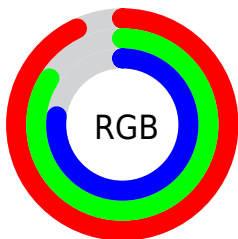
| Format | Color |
|-------------------------------------|--------------------------------|
| R_{YB} | 237, 225, 196 |
| Decimal | 15586756 |
| CIE _{Lab} | 86.79, 5.62, 11.42 |
| CIE _{LCh} | 87, 12.732, 63.783 |
| Yxy | 69.5785, 0.3429, 0.3474 |
| Android (android.graphics.Color) | 4293776836 (0xFFEDD5C4) |
| YUV | 218.2380, -10.9633, 16.4543 |
| Hunter-Lab | 83.4138, 1.0033, 14.2958 |

Details

The RGB color **237, 213, 196** is a light color, and the websafe version is hex **FFCCCC**. A complement of this color would be **196, 220, 237**, and the grayscale version is **218, 218, 218**.

A 20% lighter version of the original color is 255, 255, 253, and **181, 158, 142** is the 20% darker color. If you saturate the color by 10%, you get **237, 199, 172**, and if you desaturate by 10%, it is **237, 227, 220**.

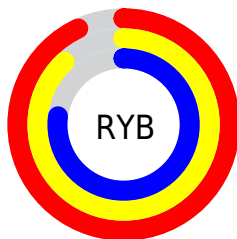
Distribution



Red (93%)

Green (84%)

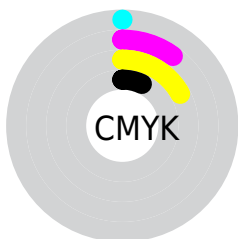
Blue (77%)



Red (93%)

Yellow (88%)

Blue (77%)

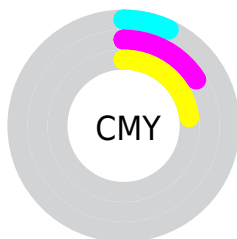


Cyan (0%)

Magenta (10%)

Yellow (17%)

Black (7%)



Cyan (7%)

Magenta (16%)

Yellow (23%)

Brightness & Saturation Gradients

These gradients show how the RGB color 237, 213, 196 changes by changing the brightness by 10 percent. The first figure shows a shift by +10% for each color and the second figure -10%.

Similar to the brightness gradients but the following saturation gradients show a change of the RGB color 237, 213, 196 by changing the saturation by 10% instead.


 237, 213, 196

255, 255, 255


255, 255, 253

 237, 213, 196

 209, 185, 169

 181, 158, 142

 154, 132, 117

 128, 107, 92

 102, 83, 69

 78, 60, 46


 54, 38, 25

 34, 18, 0

 0, 0, 0

 237, 213, 196


 237, 213, 196

 237, 199, 172


 237, 227, 220

 237, 185, 149

 237, 241, 243

 237, 171, 125

 237, 255, 255

 237, 158, 101

 237, 255, 255

 237, 144, 78

 237, 130, 54

 237, 116, 30

 237, 102, 6

 237, 98, 0

Harmonies

Analogous

The Analogous color harmony consists of three colors that are next to each other on the color wheel.



243, 210, 204



237, 213, 196



226, 217, 193

Triad

The Triadic color harmony groups three colors that are evenly spaced from another and form a triangle on the color wheel.



237, 213, 196



189, 225, 218



222, 214, 237

Complementary

The Complementary color scheme is a pair of colors which are on the opposite of each other on the color wheel.



237, 213, 196



196, 220, 237

Split Complementary

Split-complementary colors differ from the complementary color scheme. The scheme consists of three colors, the original color and two neighbors of the complement color.



207, 218, 241



237, 213, 196



187, 224, 230

Square

The Square scheme is like the rectangle color scheme, but the four colors are evenly spaced on the color wheel.



237, 213, 196



199, 223, 206



194, 221, 239



235, 211, 228

Rectangle

The Rectangle color scheme consists of four colors that form a rectangle on the color wheel.



237, 213, 196



217, 220, 195



194, 221, 239



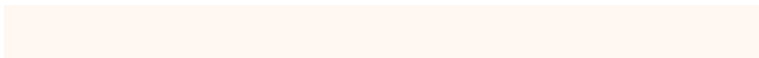
217, 215, 239

Sweetspot

The Sweet Spot groups the original color and five complimentary colors.



237, 213, 196



255, 248, 242



237, 196, 221



128, 123, 120



0, 0, 0



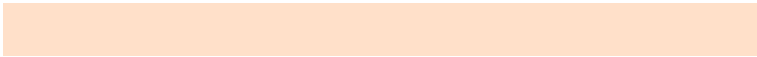
128, 128, 128

Same Dimension

The Same Dimension uses a secret algorithm to generate beautiful new colors.



237, 213, 196



255, 224, 201



237, 233, 196



117, 110, 106



181, 75, 0



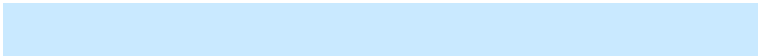
54, 22, 0

Inverse Universe

The Inverse Universe completely reimagines the original color for something new.



196, 220, 237



201, 233, 255



196, 200, 237



106, 112, 117



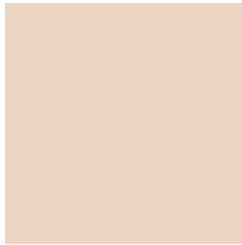
0, 106, 181



0, 31, 54

Previews

White Background



This preview shows how the RGB color 237, 213, 196 looks on a white background.

Color Contrast Check

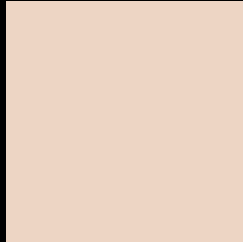
Large Text (above 18pt) WCAG AA × Fail

Any Text WCAG AA × Fail

Large Text (above 18pt) WCAG AAA × Fail

Any Text WCAG AAA × Fail

Black Background



This preview shows how the RGB color 237, 213, 196 looks on a black background.

Color Contrast Check

Large Text (above 18pt) WCAG AA ✓ Pass

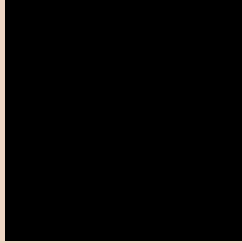
Any Text WCAG AA ✓ Pass

Large Text (above 18pt) WCAG AAA ✓ Pass

Any Text WCAG AAA ✓ Pass

If you want to check with other color combinations, try the [Color Contrast Checker](#).

RGB 237, 213, 196 Background



This preview shows how black text looks on a background with the RGB color 237, 213, 196.



This preview shows how white text looks on a background with the RGB color 237, 213, 196.

Color Blindness Simulation

Color vision deficiency is a very complex topic, and I could not describe the different causes any better than Wikipedia does, so if you want to learn more, you should check out their [article about color blindness](#).

Dichromacy



Original Color
237, 213, 196

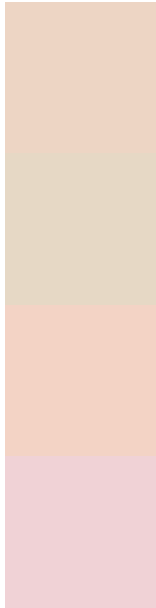
Protanopia
226, 217, 198

Deuteranopia
246, 210, 197



Tritanopia
241, 209, 225

Trichromacy



Original Color

237, 213, 196

Protanomaly

230, 216, 197

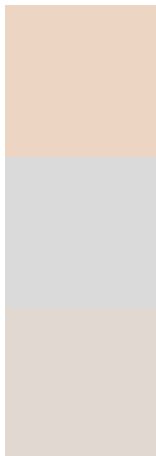
Deuteranomaly

243, 211, 197

Tritanomaly

240, 210, 214

Monochromacy



Original Color

237, 213, 196

Achromatopsia

218, 218, 218

Achromatomaly

225, 216, 210

CSS Examples

Text

The CSS property to change the color of the text to RGB 237, 213, 196 is called "color". The color property can be set on classes, ids or directly on the HTML element.

This example shows how text in the color `rgb(237, 213, 196)` looks like.

```
.text, #text, p{  
    color:rgb(237, 213, 196)  
}
```

If you want to add a text shadow in that color use the text-shadow property, you can generate a text shadow directly with our [CSS Text Shadow Generator](#).

Here you see how black text with a 4 pixel rgb(237, 213, 196) colored shadow looks like.

```
.shadow{ text-shadow: 4px 4px 2px rgb(237, 213, 196) }
```

Border

The CSS property to change the border of an element to RGB 237, 213, 196 is called "border". The border property can be set on classes, ids or directly on the HTML element.

This example shows the color as border, it can be applied via the CSS property "border" or "border-color".

```
.border, #border, table{ border:4px solid rgb(237, 213, 196) }
```

If only the border color should be changed use the property `border-color`.

```
.border{ border-color:rgb(237, 213, 196) }
```

If you want to add a box shadow in that color use:

Here you see how a box with a 4 pixel `rgb(237, 213, 196)` colored shadow looks like.

```
.boxshadow{ -moz-box-shadow:4px 4px 4px  
4px rgb(237, 213, 196); -webkit-box-  
shadow:4px 4px 4px 4px rgb(237, 213, 196);  
box-shadow:4px 4px 4px 4px rgb(237, 213,  
196) }
```

Background

The CSS property to change the background color of an element to RGB 237, 213, 196 is called "background". The background property can be set on classes, ids or directly on the HTML element.

```
.background, #background, body{  
background: rgb(237, 213, 196) }
```

If only the background color should be changed can be used:

```
.background{ background-color: rgb(237,  
213, 196) }
```

This example shows the color as background, it is applied via the CSS property "background".

To optimize and compress your CSS code, you can use our [online CSS compressor and optimizer](#) based on csstidy. If you want to create a linear or radial gradient as background or border, check our [CSS Gradient Generator](#).

Hey! You found this booklet interesting? Support Converting Colors with the new Membership Option!

The pro membership hides all ads, plus gives you double the colors in the color bucket, and more awesome pro features!

[Learn more, Memberships starting at \\$2.50/m!](#)

**Follow me
on Twitter!**

@ConvertingColor