

Converting Colors

RGB(237, 213, 209)

Have a look what the booklet for
RGB(237, 213, 209) contains.

RGB(237, 213, 209)	3
<i>Conversions</i>	4
<i>Details</i>	6
<i>Harmonies</i>	11
<i>Previews</i>	23
<i>Color Blindness Simulation</i>	26
<i>CSS Examples</i>	29

Color

RGB(237, 213, 209)

Conversions

Conversions Part 1

Format	Color
Hex	EDD5D1
RGB	237, 213, 209
RGB Percent	93%, 84%, 82%
CMY	0.0706, 0.1647, 0.1804
CMYK	0.00, 0.10, 0.12, 0.07
HSL	9°, 44%, 87%
HSV	9°, 12%, 93%
XYZ	70.2279, 70.1965, 70.1695
YIQ	219.7200, 15.5880, 3.8440

Conversions

Conversions Part 2

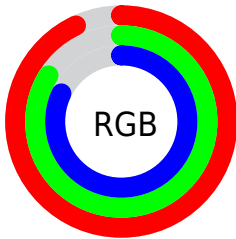
Format	Color
R _Y B	237, 214, 209
Decimal	15586769
CIE Lab	87.09, 7.66, 4.99
CIE LCh	87, 9.141, 33.114
Yxy	70.1965, 0.3335, 0.3333
Android (android.graphics.Color)	4293776849 (0xFFEDD5D1)
YUV	219.7200, -5.2850, 15.1546
Hunter-Lab	83.7833, 2.9994, 8.9923

Details

The RGB color **237, 213, 209** is a light color, and the websafe version is hex **CCCCCC**. A complement of this color would be **209, 233, 237**, and the grayscale version is **220, 220, 220**.

A 20% lighter version of the original color is **255, 255, 255**, and **181, 158, 155** is the 20% darker color. If you saturate the color by 10%, you get **237, 193, 185**, and if you desaturate by 10%, it is **237, 233, 233**.

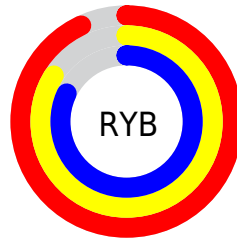
Distribution



Red (93%)

Green (84%)

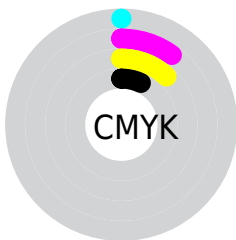
Blue (82%)



Red (93%)

Yellow (84%)

Blue (82%)

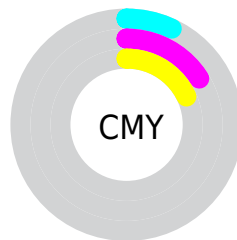


Cyan (0%)

Magenta (10%)

Yellow (12%)

Black (7%)



Cyan (7%)

Magenta (16%)

Yellow (18%)

Brightness & Saturation Gradients

These gradients show how the RGB color 237, 213, 209 changes by changing the brightness by 10 percent. The first figure shows a shift by +10% for each color and the second figure -10%.

Similar to the brightness gradients but the following saturation gradients show a change of the RGB color 237, 213, 209 by changing the saturation by 10% instead.

■ 237, 213, 209

255, 255, 255

■ 237, 213, 209

■ 209, 185, 181

■ 181, 158, 155

■ 154, 132, 129

■ 128, 107, 104

■ 103, 83, 80

■ 78, 60, 57


■ 55, 38, 35

■ 34, 18, 14


■ 0, 0, 0

 237, 213, 209


 237, 213, 209

 237, 193, 185

 237, 233, 233

 237, 172, 162

 237, 254, 255

 237, 152, 138

 237, 255, 255

 237, 132, 114

 237, 111, 90

 237, 91, 67

 237, 71, 43

 237, 50, 19

 237, 34, 0

Harmonies

Analogous

The Analogous color harmony consists of three colors that are next to each other on the color wheel.



236, 212, 217



237, 213, 209



233, 215, 203

Triad

The Triadic color harmony groups three colors that are evenly spaced from another and form a triangle on the color wheel.



237, 213, 209



205, 223, 210



210, 219, 235

Complementary

The Complementary color scheme is a pair of colors which are on the opposite of each other on the color wheel.



237, 213, 209



209, 233, 237

Split Complementary

Split-complementary colors differ from the complementary color scheme. The scheme consists of three colors, the original color and two neighbors of the complement color.



201, 221, 233



237, 213, 209



199, 223, 219

Square

The Square scheme is like the rectangle color scheme, but the four colors are evenly spaced on the color wheel.



237, 213, 209



215, 221, 204



197, 223, 227



221, 216, 233

Rectangle

The Rectangle color scheme consists of four colors that form a rectangle on the color wheel.



237, 213, 209



228, 217, 201



197, 223, 227



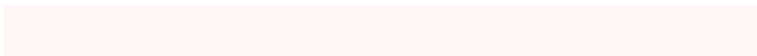
207, 219, 235

Sweetspot

The Sweet Spot groups the original color and five complimentary colors.



237, 213, 209



255, 246, 245



237, 209, 233



128, 122, 121



0, 0, 0



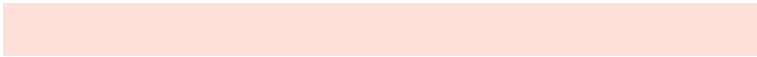
128, 128, 128

Same Dimension

The Same Dimension uses a secret algorithm to generate beautiful new colors.



237, 213, 209



255, 224, 219



237, 227, 209



117, 107, 106



181, 26, 0



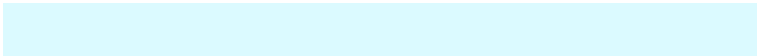
54, 8, 0

Inverse Universe

The Inverse Universe completely reimagines the original color for something new.



209, 233, 237



219, 250, 255



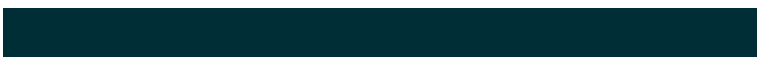
209, 219, 237



106, 116, 117



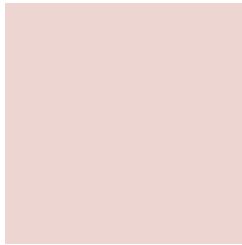
0, 155, 181



0, 46, 54

Previews

White Background



This preview shows how the RGB color 237, 213, 209 looks on a white background.

Color Contrast Check

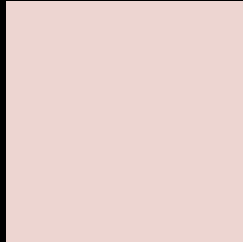
Large Text (above 18pt) WCAG AA × Fail

Any Text WCAG AA × Fail

Large Text (above 18pt) WCAG AAA × Fail

Any Text WCAG AAA × Fail

Black Background



This preview shows how the RGB color 237, 213, 209 looks on a black background.

Color Contrast Check

Large Text (above 18pt) WCAG AA ✓ Pass

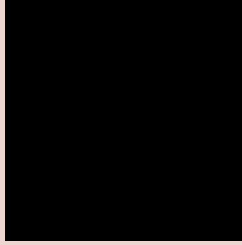
Any Text WCAG AA ✓ Pass

Large Text (above 18pt) WCAG AAA ✓ Pass

Any Text WCAG AAA ✓ Pass

If you want to check with other color combinations, try the [Color Contrast Checker](#).

RGB 237, 213, 209 Background



This preview shows how black text looks on a background with the RGB color 237, 213, 209.

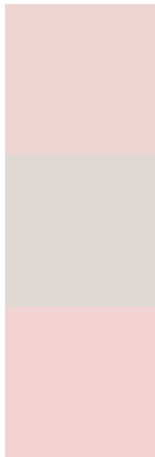


This preview shows how white text looks on a background with the RGB color 237, 213, 209.

Color Blindness Simulation

Color vision deficiency is a very complex topic, and I could not describe the different causes any better than Wikipedia does, so if you want to learn more, you should check out their [article about color blindness](#).

Dichromacy



Original Color
237, 213, 209

Protanopia
224, 217, 211

Deuteranopia
243, 211, 209



Tritanopia
239, 210, 227

Trichromacy



Original Color

237, 213, 209

Protanomaly

229, 216, 210

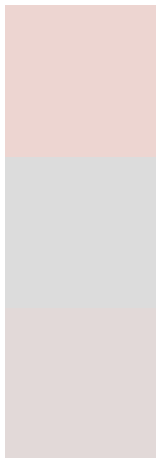
Deuteranomaly

241, 212, 209

Tritanomaly

238, 211, 220

Monochromacy



Original Color

237, 213, 209

Achromatopsia

220, 220, 220

Achromatomaly

226, 217, 216

CSS Examples

Text

The CSS property to change the color of the text to RGB 237, 213, 209 is called "color". The color property can be set on classes, ids or directly on the HTML element.

This example shows how text in the color `rgb(237, 213, 209)` looks like.

```
.text, #text, p{  
    color:rgb(237, 213, 209)  
}
```

If you want to add a text shadow in that color use the text-shadow property, you can generate a text shadow directly with our [CSS Text Shadow Generator](#).

Here you see how black text with a 4 pixel rgb(237, 213, 209) colored shadow looks like.

```
.shadow{ text-shadow: 4px 4px 2px rgb(237, 213, 209) }
```

Border

The CSS property to change the border of an element to RGB 237, 213, 209 is called "border". The border property can be set on classes, ids or directly on the HTML element.

This example shows the color as border, it can be applied via the CSS property "border" or "border-color".

```
.border, #border, table{ border:4px solid rgb(237, 213, 209) }
```

If only the border color should be changed use the property `border-color`.

```
.border{ border-color:rgb(237, 213, 209) }
```

If you want to add a box shadow in that color use:

Here you see how a box with a 4 pixel `rgb(237, 213, 209)` colored shadow looks like.

```
.boxshadow{ -moz-box-shadow:4px 4px 4px  
4px rgb(237, 213, 209); -webkit-box-  
shadow:4px 4px 4px 4px rgb(237, 213, 209);  
box-shadow:4px 4px 4px 4px rgb(237, 213,  
209) }
```

Background

The CSS property to change the background color of an element to RGB 237, 213, 209 is called "background". The background property can be set on classes, ids or directly on the HTML element.

```
.background, #background, body{  
background: rgb(237, 213, 209) }
```

If only the background color should be changed can be used:

```
.background{ background-color: rgb(237,  
213, 209) }
```

This example shows the color as background, it is applied via the CSS property "background".

To optimize and compress your CSS code, you can use our [online CSS compressor and optimizer](#) based on csstidy. If you want to create a linear or radial gradient as background or border, check our [CSS Gradient Generator](#).

Hey! You found this booklet interesting? Support Converting Colors with the new Membership Option!

The pro membership hides all ads, plus gives you double the colors in the color bucket, and more awesome pro features!

[Learn more, Memberships starting at \\$2.50/m!](#)

**Follow me
on Twitter!**

@ConvertingColor