

Converting Colors

RGB(238, 215, 205)

Have a look what the booklet for
RGB(238, 215, 205) contains.

RGB(238, 215, 205)	3
<i>Conversions</i>	4
<i>Details</i>	6
<i>Harmonies</i>	11
<i>Previews</i>	23
<i>Color Blindness Simulation</i>	26
<i>CSS Examples</i>	29

Color

RGB(238, 215, 205)

Conversions

Conversions Part 1

Format	Color
Hex	EED7CD
RGB	238, 215, 205
RGB Percent	93%, 84%, 80%
CMY	0.0667, 0.1569, 0.1961
CMYK	0.00, 0.10, 0.14, 0.07
HSL	18°, 49%, 87%
HSV	18°, 14%, 93%
XYZ	70.5798, 71.1858, 67.7779
YIQ	220.7370, 16.9180, 1.7660

Conversions

Conversions Part 2

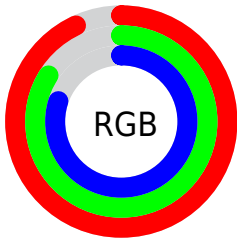
Format	Color
R _Y B	238, 219, 205
Decimal	15652813
CIE Lab	87.58, 6.33, 7.81
CIE LCh	88, 10.054, 50.968
Yxy	71.1858, 0.3368, 0.3397
Android (android.graphics.Color)	4293842893 (0xFFEED7CD)
YUV	220.7370, -7.7583, 15.1397
Hunter-Lab	84.3717, 1.6709, 11.4310

Details

The RGB color **238, 215, 205** is a light color, and the websafe version is hex **CCCCCC**. A complement of this color would be **205, 228, 238**, and the grayscale version is **221, 221, 221**.

A 20% lighter version of the original color is **255, 255, 255**, and **182, 160, 151** is the 20% darker color. If you saturate the color by 10%, you get **238, 198, 181**, and if you desaturate by 10%, it is **238, 232, 229**.

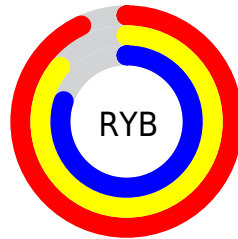
Distribution



Red (93%)

Green (84%)

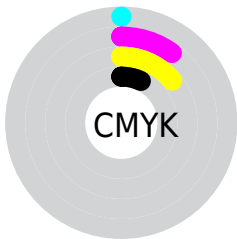
Blue (80%)



Red (93%)

Yellow (86%)

Blue (80%)

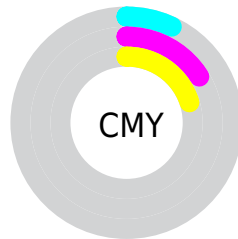


Cyan (0%)

Magenta (10%)

Yellow (14%)

Black (7%)



Cyan (7%)

Magenta (16%)

Yellow (20%)

Brightness & Saturation Gradients


These gradients show how the RGB color 238, 215, 205 changes by changing the brightness by 10 percent. The first figure shows a shift by +10% for each color and the second figure -10%.


Similar to the brightness gradients but the following saturation gradients show a change of the RGB color 238, 215, 205 by changing the saturation by 10% instead.

 238, 215, 205

 238, 215, 205

255, 255, 255

 210, 187, 178

 182, 160, 151

 155, 134, 125

 129, 109, 100

 103, 85, 76

 79, 61, 53


 56, 40, 32

 34, 19, 9

 0, 0, 0

 238, 215, 205

 238, 215, 205

 238, 198, 181

 238, 232, 229


 238, 182, 157


 238, 248, 253

 238, 165, 134

 238, 255, 255

 238, 149, 110

 238, 132, 86

 238, 115, 62

 238, 99, 38

 238, 82, 15

 238, 72, 0

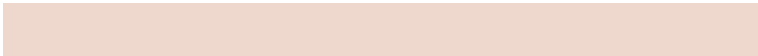
Harmonies

Analogous

The Analogous color harmony consists of three colors that are next to each other on the color wheel.



241, 213, 213



238, 215, 205



231, 218, 201

Triad

The Triadic color harmony groups three colors that are evenly spaced from another and form a triangle on the color wheel.



238, 215, 205



200, 225, 216



218, 218, 237

Complementary

The Complementary color scheme is a pair of colors which are on the opposite of each other on the color wheel.



238, 215, 205



205, 228, 238

Split Complementary

Split-complementary colors differ from the complementary color scheme. The scheme consists of three colors, the original color and two neighbors of the complement color.



206, 221, 238



238, 215, 205



196, 225, 226

Square

The Square scheme is like the rectangle color scheme, but the four colors are evenly spaced on the color wheel.



238, 215, 205



209, 224, 207



198, 224, 234



229, 215, 232

Rectangle

The Rectangle color scheme consists of four colors that form a rectangle on the color wheel.



238, 215, 205



224, 220, 201



198, 224, 234



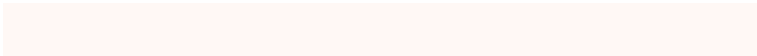
214, 219, 238

Sweetspot

The Sweet Spot groups the original color and five complimentary colors.



238, 215, 205



255, 248, 245



238, 205, 228



128, 123, 121



0, 0, 0



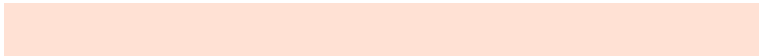
128, 128, 128

Same Dimension

The Same Dimension uses a secret algorithm to generate beautiful new colors.



238, 215, 205



255, 225, 212



238, 231, 205



120, 111, 108



184, 56, 0



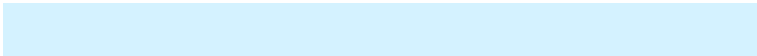
56, 17, 0

Inverse Universe

The Inverse Universe completely reimagines the original color for something new.



205, 228, 238



212, 242, 255



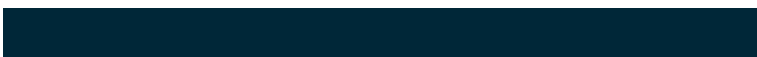
205, 212, 238



108, 116, 120



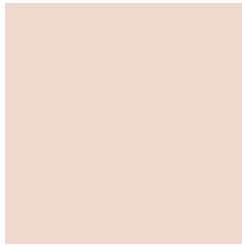
0, 128, 184



0, 39, 56

Previews

White Background



This preview shows how the RGB color 238, 215, 205 looks on a white background.

Color Contrast Check

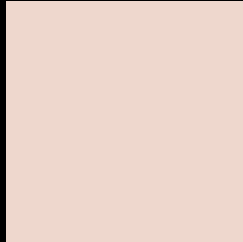
Large Text (above 18pt) WCAG AA × Fail

Any Text WCAG AA × Fail

Large Text (above 18pt) WCAG AAA × Fail

Any Text WCAG AAA × Fail

Black Background



This preview shows how the RGB color 238, 215, 205 looks on a black background.

Color Contrast Check

Large Text (above 18pt) WCAG AA ✓ Pass

Any Text WCAG AA ✓ Pass

Large Text (above 18pt) WCAG AAA ✓ Pass

Any Text WCAG AAA ✓ Pass

If you want to check with other color combinations, try the [Color Contrast Checker](#).

RGB 238, 215, 205 Background



This preview shows how black text looks on a background with the RGB color 238, 215, 205.



This preview shows how white text looks on a background with the RGB color 238, 215, 205.

Color Blindness Simulation

Color vision deficiency is a very complex topic, and I could not describe the different causes any better than Wikipedia does, so if you want to learn more, you should check out their [article about color blindness](#).

Dichromacy





Tritanopia
241, 212, 228

Trichromacy



Original Color

238, 215, 205

Protanomaly

230, 218, 206

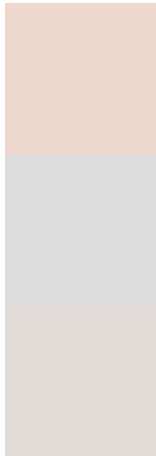
Deuteranomaly

243, 213, 206

Tritanomaly

240, 213, 220

Monochromacy



Original Color

238, 215, 205

Achromatopsia

221, 221, 221

Achromatomaly

227, 219, 215

CSS Examples

Text

The CSS property to change the color of the text to RGB 238, 215, 205 is called "color". The color property can be set on classes, ids or directly on the HTML element.

This example shows how text in the color rgb(238, 215, 205) looks like.

```
.text, #text, p{  
    color:rgb(238, 215, 205)  
}
```

If you want to add a text shadow in that color use the text-shadow property, you can generate a text shadow directly with our [CSS Text Shadow Generator](#).

Here you see how black text with a 4 pixel rgb(238, 215, 205) colored shadow looks like.

```
.shadow{ text-shadow: 4px 4px 2px rgb(238, 215, 205) }
```

Border

The CSS property to change the border of an element to RGB 238, 215, 205 is called "border". The border property can be set on classes, ids or directly on the HTML element.

This example shows the color as border, it can be applied via the CSS property "border" or "border-color".

```
.border, #border, table{ border:4px solid rgb(238, 215, 205) }
```

If only the border color should be changed use the property border-color.

```
.border{ border-color:rgb(238, 215, 205) }
```

If you want to add a box shadow in that color use:

Here you see how a box with a 4 pixel rgb(238, 215, 205) colored shadow looks like.

```
.boxshadow{ -moz-box-shadow:4px 4px 4px  
4px rgb(238, 215, 205); -webkit-box-  
shadow:4px 4px 4px 4px rgb(238, 215, 205);  
box-shadow:4px 4px 4px 4px rgb(238, 215,  
205) }
```

Background

The CSS property to change the background color of an element to RGB 238, 215, 205 is called "background". The background property can be set on classes, ids or directly on the HTML element.

```
.background, #background, body{  
background: rgb(238, 215, 205) }
```

If only the background color should be changed can be used:

```
.background{ background-color: rgb(238,  
215, 205) }
```

This example shows the color as background, it is applied via the CSS property "background".

To optimize and compress your CSS code, you can use our [online CSS compressor and optimizer](#) based on csstidy. If you want to create a linear or radial gradient as background or border, check our [CSS Gradient Generator](#).

Hey! You found this booklet interesting? Support Converting Colors with the new Membership Option!

The pro membership hides all ads, plus gives you double the colors in the color bucket, and more awesome pro features!

[Learn more, Memberships starting at \\$2.50/m!](#)

**Follow me
on Twitter!**

@ConvertingColor