

Converting Colors

RGB(238, 218, 221)

Have a look what the booklet for
RGB(238, 218, 221) contains.

RGB(238, 218, 221)	3
<i>Conversions</i>	4
<i>Details</i>	6
<i>Harmonies</i>	11
<i>Previews</i>	23
<i>Color Blindness Simulation</i>	26
<i>CSS Examples</i>	29

Color

RGB(238, 218, 221)

Conversions

Conversions Part 1

Format	Color
Hex	EEDADD
RGB	238, 218, 221
RGB Percent	93%, 85%, 87%
CMY	0.0667, 0.1451, 0.1333
CMYK	0.00, 0.08, 0.07, 0.07
HSL	351°, 37%, 89%
HSV	351°, 8%, 93%
XYZ	73.3824, 73.5404, 78.7337
YIQ	224.3220, 10.9570, 5.1730

Conversions

Conversions Part 2

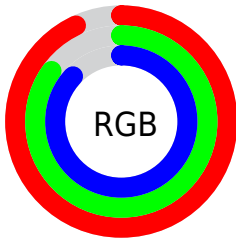
Format	Color
R _Y B	238, 218, 221
Decimal	15653597
CIE Lab	88.70, 7.38, 1.01
CIE LCh	89, 7.447, 7.811
Yxy	73.5404, 0.3252, 0.3259
Android (android.graphics.Color)	4293843677 (0xFFEEDADD)
YUV	224.3220, -1.6377, 11.9956
Hunter-Lab	85.7557, 2.6726, 5.5939

Details

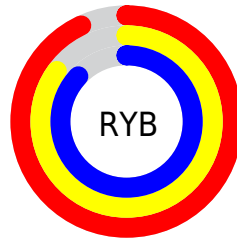
The RGB color **238, 218, 221** is a light color, and the websafe version is hex **CCCCCC**. A complement of this color would be **218, 238, 235**, and the grayscale version is **224, 224, 224**.

A 20% lighter version of the original color is **255, 255, 255**, and **182, 163, 166** is the 20% darker color. If you saturate the color by 10%, you get **238, 194, 201**, and if you desaturate by 10%, it is **238, 242, 241**.

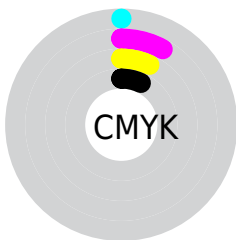
Distribution



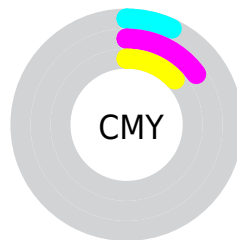
- Red (93%)
- Green (85%)
- Blue (87%)



- Red (93%)
- Yellow (85%)
- Blue (87%)



- Cyan (0%)
- Magenta (8%)
- Yellow (7%)
- Black (7%)



- Cyan (7%)
- Magenta (15%)
- Yellow (13%)

Brightness & Saturation Gradients


These gradients show how the RGB color 238, 218, 221 changes by changing the brightness by 10 percent. The first figure shows a shift by +10% for each color and the second figure -10%.

Similar to the brightness gradients but the following saturation gradients show a change of the RGB color 238, 218, 221 by changing the saturation by 10% instead.

 238, 218, 221

255, 255, 255

 238, 218, 221


 210, 190, 193

 182, 163, 166

 155, 137, 140

 129, 111, 114

 104, 87, 90

 80, 64, 66


 57, 42, 44

 35, 21, 24

 5, 0, 0

 238, 218, 221

 238, 218, 221


 238, 194, 201

 238, 242, 241


 238, 170, 181

 238, 255, 255

 238, 147, 160

 238, 123, 140

 238, 99, 120

 238, 75, 100

 238, 51, 79

 238, 28, 59

 238, 4, 39

Harmonies

Analogous

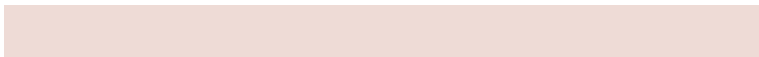
The Analogous color harmony consists of three colors that are next to each other on the color wheel.



234, 219, 228



238, 218, 221



238, 219, 214

Triad

The Triadic color harmony groups three colors that are evenly spaced from another and form a triangle on the color wheel.



238, 218, 221



219, 225, 211



210, 225, 236

Complementary

The Complementary color scheme is a pair of colors which are on the opposite of each other on the color wheel.



238, 218, 221



218, 238, 235

Split Complementary

Split-complementary colors differ from the complementary color scheme. The scheme consists of three colors, the original color and two neighbors of the complement color.



206, 226, 231



238, 218, 221



211, 227, 217

Square

The Square scheme is like the rectangle color scheme, but the four colors are evenly spaced on the color wheel.



238, 218, 221



227, 223, 209



206, 227, 224



218, 223, 237

Rectangle

The Rectangle color scheme consists of four colors that form a rectangle on the color wheel.



238, 218, 221



236, 220, 211



206, 227, 224



208, 226, 234

Sweetspot

The Sweet Spot groups the original color and five complimentary colors.



238, 218, 221



255, 247, 248



235, 218, 238



128, 122, 123



0, 0, 0



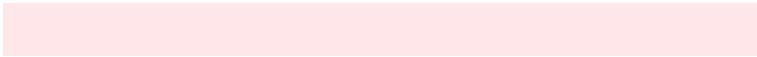
128, 128, 128

Same Dimension

The Same Dimension uses a secret algorithm to generate beautiful new colors.



238, 218, 221



255, 230, 233



238, 225, 218



120, 108, 110



184, 0, 28



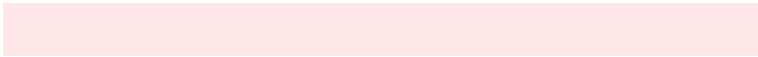
56, 0, 8

Inverse Universe

The Inverse Universe completely reimagines the original color for something new.



238, 218, 221



255, 230, 233



218, 231, 238



120, 108, 110



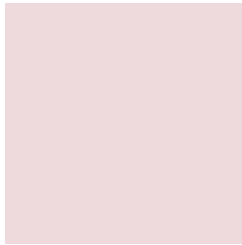
184, 0, 28



56, 0, 8

Previews

White Background



This preview shows how the RGB color 238, 218, 221 looks on a white background.

Color Contrast Check

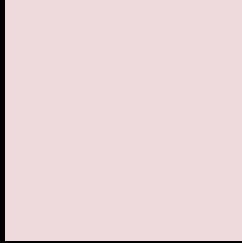
Large Text (above 18pt) WCAG AA × Fail

Any Text WCAG AA × Fail

Large Text (above 18pt) WCAG AAA × Fail

Any Text WCAG AAA × Fail

Black Background



This preview shows how the RGB color 238, 218, 221 looks on a black background.

Color Contrast Check

Large Text (above 18pt) WCAG AA ✓ Pass

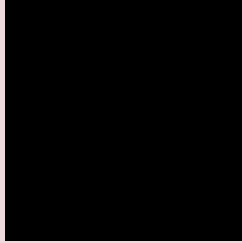
Any Text WCAG AA ✓ Pass

Large Text (above 18pt) WCAG AAA ✓ Pass

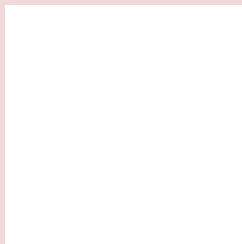
Any Text WCAG AAA ✓ Pass

If you want to check with other color combinations, try the [Color Contrast Checker](#).

RGB 238, 218, 221 Background



This preview shows how black text looks on a background with the RGB color 238, 218, 221.

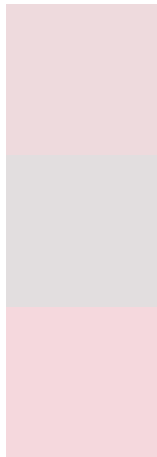


This preview shows how white text looks on a background with the RGB color 238, 218, 221.

Color Blindness Simulation

Color vision deficiency is a very complex topic, and I could not describe the different causes any better than Wikipedia does, so if you want to learn more, you should check out their [article about color blindness](#).


Dichromacy



Original Color
238, 218, 221

Protanopia
226, 222, 223

Deuteranopia
245, 216, 221



Tritanopia
240, 216, 233

Trichromacy



Original Color

238, 218, 221

Protanomaly

230, 221, 222

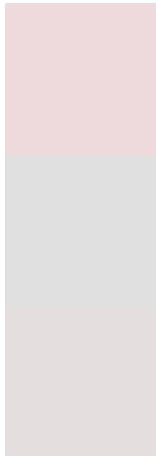
Deuteranomaly

242, 217, 221

Tritanomaly

239, 217, 229

Monochromacy



Original Color

238, 218, 221

Achromatopsia

224, 224, 224

Achromatomaly

229, 222, 223

CSS Examples

Text

The CSS property to change the color of the text to RGB 238, 218, 221 is called "color". The color property can be set on classes, ids or directly on the HTML element.

This example shows how text in the color rgb(238, 218, 221) looks like.

```
.text, #text, p{  
    color:rgb(238, 218, 221)  
}
```

If you want to add a text shadow in that color use the text-shadow property, you can generate a text shadow directly with our [CSS Text Shadow Generator](#).

Here you see how black text with a 4 pixel rgb(238, 218, 221) colored shadow looks like.

```
.shadow{ text-shadow: 4px 4px 2px rgb(238, 218, 221) }
```

Border

The CSS property to change the border of an element to RGB 238, 218, 221 is called "border". The border property can be set on classes, ids or directly on the HTML element.

This example shows the color as border, it can be applied via the CSS property "border" or "border-color".

```
.border, #border, table{ border:4px solid rgb(238, 218, 221) }
```

If only the border color should be changed use the property `border-color`.

```
.border{ border-color:rgb(238, 218, 221) }
```

If you want to add a box shadow in that color use:

Here you see how a box with a 4 pixel `rgb(238, 218, 221)` colored shadow looks like.

```
.boxshadow{ -moz-box-shadow:4px 4px 4px  
4px rgb(238, 218, 221); -webkit-box-  
shadow:4px 4px 4px 4px rgb(238, 218, 221);  
box-shadow:4px 4px 4px 4px rgb(238, 218,  
221) }
```

Background

The CSS property to change the background color of an element to RGB 238, 218, 221 is called "background". The background property can be set on classes, ids or directly on the HTML element.

```
.background, #background, body{  
background: rgb(238, 218, 221) }
```

If only the background color should be changed can be used:

```
.background{ background-color: rgb(238,  
218, 221) }
```

This example shows the color as background, it is applied via the CSS property "background".

To optimize and compress your CSS code, you can use our [online CSS compressor and optimizer](#) based on csstidy. If you want to create a linear or radial gradient as background or border, check our [CSS Gradient Generator](#).

Hey! You found this booklet interesting? Support Converting Colors with the new Membership Option!

The pro membership hides all ads, plus gives you double the colors in the color bucket, and more awesome pro features!

[Learn more, Memberships starting at \\$2.50/m!](#)

**Follow me
on Twitter!**

@ConvertingColor