

Converting Colors

RGB(239, 209, 198)

Have a look what the booklet for
RGB(239, 209, 198) contains.

RGB(239, 209, 198)	3
<i>Conversions</i>	4
<i>Details</i>	6
<i>Harmonies</i>	11
<i>Previews</i>	23
<i>Color Blindness Simulation</i>	26
<i>CSS Examples</i>	29

Color

RGB(239, 209, 198)

Conversions

Conversions Part 1

Format	Color
Hex	EFD1C6
RGB	239, 209, 198
RGB Percent	94%, 82%, 78%
CMY	0.0627, 0.1804, 0.2235
CMYK	0.00, 0.13, 0.17, 0.06
HSL	16°, 56%, 86%
HSV	16°, 17%, 94%
XYZ	68.5901, 68.0289, 62.9419
YIQ	216.7160, 21.4110, 2.9390

Conversions

Conversions Part 2

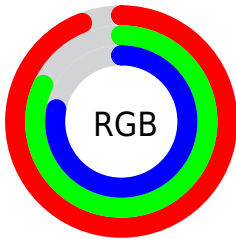
Format	Color
R _Y B	239, 213, 198
Decimal	15716806
CIE Lab	86.02, 8.74, 9.29
CIE LCh	86, 12.754, 46.767
Yxy	68.0289, 0.3437, 0.3409
Android (android.graphics.Color)	4293906886 (0xFFEFD1C6)
YUV	216.7160, -9.2270, 19.5431
Hunter-Lab	82.4796, 4.1014, 12.4903

Details

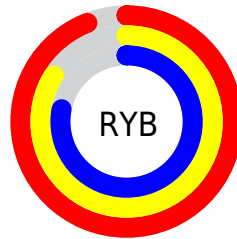
The RGB color **239, 209, 198** is a light color, and the websafe version is hex **FFCCCC**. A complement of this color would be **198, 228, 239**, and the grayscale version is **217, 217, 217**.

A 20% lighter version of the original color is 255, 255, 255, and **183, 155, 144** is the 20% darker color. If you saturate the color by 10%, you get **239, 192, 174**, and if you desaturate by 10%, it is **239, 226, 222**.

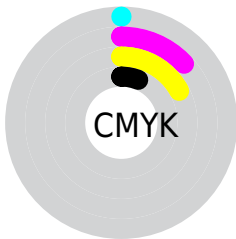
Distribution



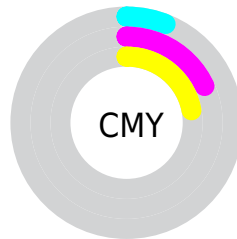
- Red (94%)
- Green (82%)
- Blue (78%)



- Red (94%)
- Yellow (84%)
- Blue (78%)



- Cyan (0%)
- Magenta (13%)
- Yellow (17%)
- Black (6%)



- Cyan (6%)
- Magenta (18%)
- Yellow (22%)

Brightness & Saturation Gradients


These gradients show how the RGB color 239, 209, 198 changes by changing the brightness by 10 percent. The first figure shows a shift by +10% for each color and the second figure -10%.

Similar to the brightness gradients but the following saturation gradients show a change of the RGB color 239, 209, 198 by changing the saturation by 10% instead.

 239, 209, 198

 239, 209, 198

255, 255, 255

 211, 181, 171

255, 255, 255

 183, 155, 144

 156, 129, 119

 129, 103, 94

 104, 79, 70

 79, 56, 48

 56, 35, 27

 35, 14, 0


 0, 0, 0

 239, 209, 198

 239, 209, 198

 239, 192, 174


 239, 226, 222


 239, 174, 150

 239, 244, 246

 239, 157, 126

 239, 255, 255

 239, 139, 102

 239, 122, 78

 239, 104, 55

 239, 87, 31

 239, 69, 7

 239, 64, 0

Harmonies

Analogous

The Analogous color harmony consists of three colors that are next to each other on the color wheel.



241, 207, 209



239, 209, 198



230, 212, 192

Triad

The Triadic color harmony groups three colors that are evenly spaced from another and form a triangle on the color wheel.



239, 209, 198



192, 222, 209



211, 214, 238

Complementary

The Complementary color scheme is a pair of colors which are on the opposite of each other on the color wheel.



239, 209, 198



198, 228, 239

Split Complementary

Split-complementary colors differ from the complementary color scheme. The scheme consists of three colors, the original color and two neighbors of the complement color.



196, 218, 238



239, 209, 198



185, 222, 222

Square

The Square scheme is like the rectangle color scheme, but the four colors are evenly spaced on the color wheel.



239, 209, 198



204, 220, 198



187, 221, 232



226, 210, 232

Rectangle

The Rectangle color scheme consists of four colors that form a rectangle on the color wheel.



239, 209, 198



222, 215, 191



187, 221, 232



206, 215, 239

Sweetspot

The Sweet Spot groups the original color and five complimentary colors.



239, 209, 198



255, 246, 242



239, 198, 228



128, 122, 120



0, 0, 0



128, 128, 128

Same Dimension

The Same Dimension uses a secret algorithm to generate beautiful new colors.



239, 209, 198



255, 216, 201



239, 229, 198



120, 111, 108



184, 49, 0



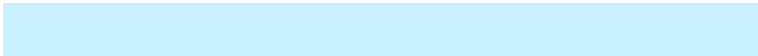
56, 15, 0

Inverse Universe

The Inverse Universe completely reimagines the original color for something new.



198, 228, 239



201, 241, 255



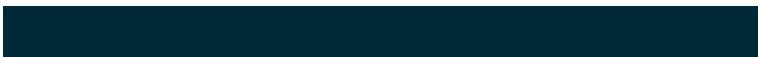
198, 208, 239



108, 117, 120



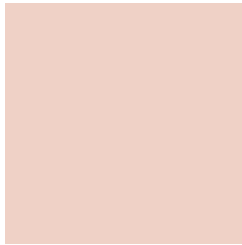
0, 134, 184



0, 41, 56

Previews

White Background



This preview shows how the RGB color 239, 209, 198 looks on a white background.

Color Contrast Check

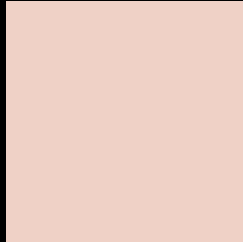
Large Text (above 18pt) WCAG AA × Fail

Any Text WCAG AA × Fail

Large Text (above 18pt) WCAG AAA × Fail

Any Text WCAG AAA × Fail

Black Background



This preview shows how the RGB color 239, 209, 198 looks on a black background.

Color Contrast Check

Large Text (above 18pt) WCAG AA ✓ Pass

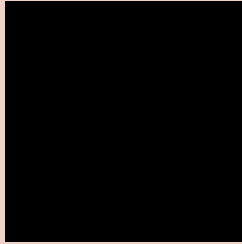
Any Text WCAG AA ✓ Pass

Large Text (above 18pt) WCAG AAA ✓ Pass

Any Text WCAG AAA ✓ Pass

If you want to check with other color combinations, try the [Color Contrast Checker](#).

RGB 239, 209, 198 Background



This preview shows how black text looks on a background with the RGB color 239, 209, 198.



This preview shows how white text looks on a background with the RGB color 239, 209, 198.

Color Blindness Simulation

Color vision deficiency is a very complex topic, and I could not describe the different causes any better than Wikipedia does, so if you want to learn more, you should check out their [article about color blindness](#).

Dichromacy

	Original Color 239, 209, 198
	Protanopia 223, 214, 201
	Deuteranopia 242, 208, 198



Tritanopia
242, 205, 222

Trichromacy



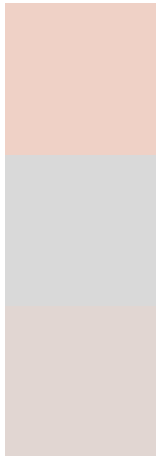
Original Color
239, 209, 198

Protanomaly
229, 212, 200

Deuteranomaly
241, 208, 198

Tritanomaly
241, 206, 213

Monochromacy



Original Color
239, 209, 198

Achromatopsia
217, 217, 217

Achromatomaly
225, 214, 210

CSS Examples

Text

The CSS property to change the color of the text to RGB 239, 209, 198 is called "color". The color property can be set on classes, ids or directly on the HTML element.

This example shows how text in the color `rgb(239, 209, 198)` looks like.

```
.text, #text, p{  
    color:rgb(239, 209, 198)  
}
```

If you want to add a text shadow in that color use the text-shadow property, you can generate a text shadow directly with our [CSS Text Shadow Generator](#).

Here you see how black text with a 4 pixel rgb(239, 209, 198) colored shadow looks like.

```
.shadow{ text-shadow: 4px 4px 2px rgb(239, 209, 198) }
```

Border

The CSS property to change the border of an element to RGB 239, 209, 198 is called "border". The border property can be set on classes, ids or directly on the HTML element.

This example shows the color as border, it can be applied via the CSS property "border" or "border-color".

```
.border, #border, table{ border:4px solid rgb(239, 209, 198) }
```

If only the border color should be changed use the property `border-color`.

```
.border{ border-color:rgb(239, 209, 198) }
```

If you want to add a box shadow in that color use:

Here you see how a box with a 4 pixel `rgb(239, 209, 198)` colored shadow looks like.

```
.boxshadow{ -moz-box-shadow:4px 4px 4px  
4px rgb(239, 209, 198); -webkit-box-  
shadow:4px 4px 4px 4px rgb(239, 209, 198);  
box-shadow:4px 4px 4px 4px rgb(239, 209,  
198) }
```

Background

The CSS property to change the background color of an element to RGB 239, 209, 198 is called "background". The background property can be set on classes, ids or directly on the HTML element.

```
.background, #background, body{  
background: rgb(239, 209, 198) }
```

If only the background color should be changed can be used:

```
.background{ background-color: rgb(239,  
209, 198) }
```

This example shows the color as background, it is applied via the CSS property "background".

To optimize and compress your CSS code, you can use our [online CSS compressor and optimizer](#) based on csstidy. If you want to create a linear or radial gradient as background or border, check our [CSS Gradient Generator](#).

Hey! You found this booklet interesting? Support Converting Colors with the new Membership Option!

The pro membership hides all ads, plus gives you double the colors in the color bucket, and more awesome pro features!

[Learn more, Memberships starting at \\$2.50/m!](#)

**Follow me
on Twitter!**

@ConvertingColor