

Converting Colors

RGB(240, 82, 139)

Have a look what the booklet for
RGB(240, 82, 139) contains.

RGB(240, 82, 139)	3
<i>Conversions</i>	4
<i>Details</i>	6
<i>Harmonies</i>	11
<i>Previews</i>	23
<i>Color Blindness Simulation</i>	26
<i>CSS Examples</i>	29

Color

RGB(240, 82, 139)

Conversions

Conversions Part 1

Format	Color
Hex	F0528B
RGB	240, 82, 139
RGB Percent	94%, 32%, 55%
CMY	0.0588, 0.6784, 0.4549
CMYK	0.00, 0.66, 0.42, 0.06
HSL	338°, 84%, 63%
HSV	338°, 66%, 94%
XYZ	43.6127, 26.4239, 27.2278
YIQ	135.7400, 75.8710, 51.2230

Conversions

Conversions Part 2

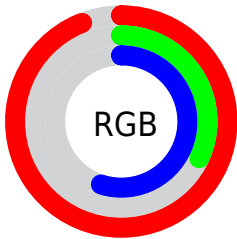
Format	Color
R _Y B	240, 82, 139
Decimal	15749771
CIE Lab	58.44, 64.80, 2.34
CIE LCh	58, 64.843, 2.066
Yxy	26.4239, 0.4484, 0.2717
Android (android.graphics.Color)	4293939851 (0xFFFF0528B)
YUV	135.7400, 1.6072, 91.4360
Hunter-Lab	51.4042, 61.4867, 4.5782

Details

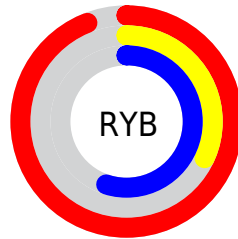
The RGB color **240, 82, 139** is a light color, and the websafe version is hex **FF6699**. The color can be described as light muted rose. A complement of this color would be **82, 240, 183**, and the grayscale version is **136, 136, 136**.

A 20% lighter version of the original color is **255, 140, 192**, and **179, 1, 89** is the 20% darker color. If you saturate the color by 10%, you get **240, 58, 124**, and if you desaturate by 10%, it is **240, 106, 154**.

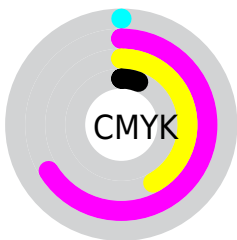
Distribution



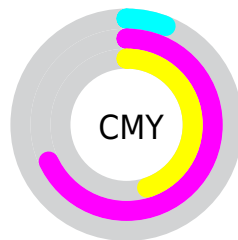
- Red (94%)
- Green (32%)
- Blue (55%)



- Red (94%)
- Yellow (32%)
- Blue (55%)



- Cyan (0%)
- Magenta (66%)
- Yellow (42%)
- Black (6%)





- Cyan (6%)
- Magenta (68%)
- Yellow (45%)

Brightness & Saturation Gradients

These gradients show how the RGB color 240, 82, 139 changes by changing the brightness by 10 percent. The first figure shows a shift by +10% for each color and the second figure -10%.

Similar to the brightness gradients but the following saturation gradients show a change of the RGB color 240, 82, 139 by changing the saturation by 10% instead.

 240, 82, 139

 240, 82, 139

255, 255, 255

 209, 51, 114

 255, 140, 192

 179, 1, 89

 255, 169, 220

 149, 0, 66

 255, 198, 249

 119, 0, 44

 255, 227, 255

 90, 0, 24

 64, 0, 3

 28, 0, 1

 0, 0, 0

 240, 82, 139

 240, 82, 139

■ 240, 58, 124

■ 240, 106, 154

■ 240, 34, 108

■ 240, 130, 170

■ 240, 10, 93

■ 240, 154, 185

■ 240, 0, 87

■ 240, 178, 200

■ 240, 202, 216

■ 240, 226, 231

■ 240, 250, 246

■ 240, 255, 255

Harmonies

Analogous

The Analogous color harmony consists of three colors that are next to each other on the color wheel.



211, 97, 195



240, 82, 139



237, 93, 84

Triad

The Triadic color harmony groups three colors that are evenly spaced from another and form a triangle on the color wheel.



240, 82, 139



107, 154, 30



0, 160, 241

Complementary

The Complementary color scheme is a pair of colors which are on the opposite of each other on the color wheel.



240, 82, 139



82, 240, 183

Split Complementary

Split-complementary colors differ from the complementary color scheme. The scheme consists of three colors, the original color and two neighbors of the complement color.



0, 166, 200



240, 82, 139



0, 163, 84

Square

The Square scheme is like the rectangle color scheme, but the four colors are evenly spaced on the color wheel.



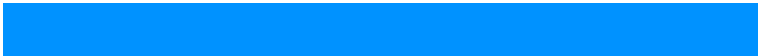
240, 82, 139



164, 139, 0



0, 167, 143



0, 146, 255

Rectangle

The Rectangle color scheme consists of four colors that form a rectangle on the color wheel.



240, 82, 139



220, 109, 50



0, 167, 143



0, 163, 229

Sweetspot

The Sweet Spot groups the original color and five complimentary colors.



240, 82, 139



255, 204, 222



182, 82, 240



128, 97, 108



0, 0, 0



128, 128, 128

Same Dimension

The Same Dimension uses a secret algorithm to generate beautiful new colors.



240, 82, 139



255, 54, 126



240, 103, 82



120, 108, 112



184, 0, 66



56, 0, 20

Inverse Universe

The Inverse Universe completely reimagines the original color for something new.



240, 82, 139



255, 54, 126



82, 219, 240



120, 108, 112



184, 0, 66



56, 0, 20

Previews

White Background



This preview shows how the RGB color 240, 82, 139 looks on a white background.

Color Contrast Check

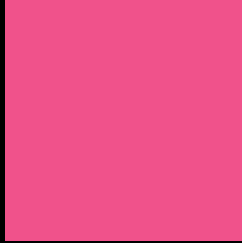
Large Text (above 18pt) WCAG AA ✓ Pass

Any Text WCAG AA ✗ Fail

Large Text (above 18pt) WCAG AAA ✗ Fail

Any Text WCAG AAA ✗ Fail

Black Background



This preview shows how the RGB color 240, 82, 139 looks on a black background.

Color Contrast Check

Large Text (above 18pt) WCAG AA ✓ Pass

Any Text WCAG AA ✓ Pass

Large Text (above 18pt) WCAG AAA ✓ Pass

Any Text WCAG AAA × Fail

If you want to check with other color combinations, try the [Color Contrast Checker](#).

RGB 240, 82, 139 Background



This preview shows how black text looks on a background with the RGB color 240, 82, 139.



This preview shows how white text looks on a background with the RGB color 240, 82, 139.

Color Blindness Simulation

Color vision deficiency is a very complex topic, and I could not describe the different causes any better than Wikipedia does, so if you want to learn more, you should check out their [article about color blindness](#).

Dichromacy



Original Color
240, 82, 139

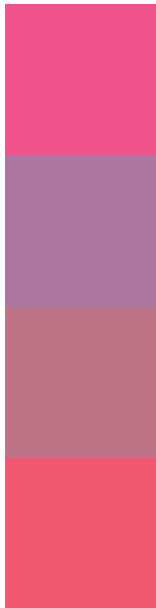
Protanopia
133, 140, 174

Deuteranopia
158, 136, 131



Tritanopia
237, 91, 97

Trichromacy



Original Color
240, 82, 139

Protanomaly
172, 119, 161

Deuteranomaly
188, 116, 134

Tritanomaly
238, 88, 112

Monochromacy



Original Color
240, 82, 139

Achromatopsia
136, 136, 136

Achromatomaly
174, 116, 137

CSS Examples

Text

The CSS property to change the color of the text to RGB 240, 82, 139 is called "color". The color property can be set on classes, ids or directly on the HTML element.

This example shows how text in the color rgb(240, 82, 139) looks like.

```
.text, #text, p{  
    color:rgb(240, 82, 139)  
}
```

If you want to add a text shadow in that color use the text-shadow property, you can generate a text shadow directly with our [CSS Text Shadow Generator](#).

Here you see how black text with a 4 pixel rgb(240, 82, 139) colored shadow looks like.

```
.shadow{ text-shadow: 4px 4px 2px rgb(240, 82, 139) }
```

Border

The CSS property to change the border of an element to RGB 240, 82, 139 is called "border". The border property can be set on classes, ids or directly on the HTML element.

This example shows the color as border, it can be applied via the CSS property "border" or "border-color".

```
.border, #border, table{ border:4px solid rgb(240, 82, 139) }
```

If only the border color should be changed use the property border-color.

```
.border{ border-color:rgb(240, 82, 139) }
```

If you want to add a box shadow in that color use:

Here you see how a box with a 4 pixel rgb(240, 82, 139) colored shadow looks like.

```
.boxshadow{ -moz-box-shadow:4px 4px 4px  
4px rgb(240, 82, 139); -webkit-box-  
shadow:4px 4px 4px 4px rgb(240, 82, 139);  
box-shadow:4px 4px 4px 4px rgb(240, 82,  
139) }
```

Background

The CSS property to change the background color of an element to RGB 240, 82, 139 is called "background". The background property can be set on classes, ids or directly on the HTML element.

```
.background, #background, body{  
background: rgb(240, 82, 139) }
```

If only the background color should be changed can be used:

```
.background{ background-color: rgb(240, 82,  
139) }
```

This example shows the color as background, it is applied via the CSS property "background".

To optimize and compress your CSS code, you can use our [online CSS compressor and optimizer](#) based on csstidy. If you want to create a linear or radial gradient as background or border, check our [CSS Gradient Generator](#).

Hey! You found this booklet interesting? Support Converting Colors with the new Membership Option!

The pro membership hides all ads, plus gives you double the colors in the color bucket, and more awesome pro features!

[Learn more, Memberships starting at \\$2.50/m!](#)

**Follow me
on Twitter!**

@ConvertingColor