

# Converting Colors

RGB(241, 215, 206)

Have a look what the booklet for  
RGB(241, 215, 206) contains.

<b>RGB(241, 215, 206)</b> .....	3
<b><i>Conversions</i></b> .....	4
<b><i>Details</i></b> .....	6
<b><i>Harmonies</i></b> .....	11
<b><i>Previews</i></b> .....	23
<b><i>Color Blindness Simulation</i></b> .....	26
<b><i>CSS Examples</i></b> .....	29

# **Color**

**RGB(241, 215, 206)**

# Conversions

## Conversions Part 1

Format	Color
Hex	F1D7CE
RGB	241, 215, 206
RGB Percent	95%, 84%, 81%
CMY	0.0549, 0.1569, 0.1922
CMYK	0.00, 0.11, 0.15, 0.05
HSL	15°, 56%, 88%
HSV	15°, 15%, 95%
XYZ	71.7166, 71.7579, 68.4633
YIQ	221.7480, 18.3850, 2.7130

# Conversions

## Conversions Part 2

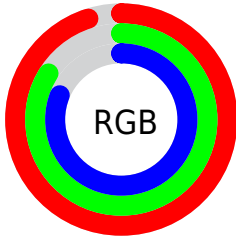
Format	Color
R <sub>Y</sub> B	241, 218, 206
Decimal	15849422
CIE Lab	87.85, 7.56, 7.71
CIE LCh	88, 10.799, 45.587
Yxy	71.7579, 0.3384, 0.3386
Android (android.graphics.Color)	4294039502 (0xFFFF1D7CE)
YUV	221.7480, -7.7638, 16.8840
Hunter-Lab	84.7100, 2.8780, 11.3784

# Details

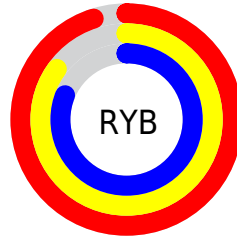
The RGB color **241, 215, 206** is a light color, and the websafe version is hex **FFCCCC**. A complement of this color would be **206, 232, 241**, and the grayscale version is **222, 222, 222**.

A 20% lighter version of the original color is 255, 255, 255, and **185, 160, 152** is the 20% darker color. If you saturate the color by 10%, you get **241, 197, 182**, and if you desaturate by 10%, it is **241, 233, 230**.

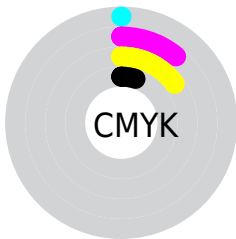
# Distribution



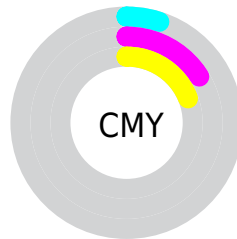
- Red (95%)
- Green (84%)
- Blue (81%)



- Red (95%)
- Yellow (85%)
- Blue (81%)



- Cyan (0%)
- Magenta (11%)
- Yellow (15%)
- Black (5%)



- Cyan (5%)
- Magenta (16%)
- Yellow (19%)

# Brightness & Saturation Gradients

These gradients show how the RGB color 241, 215, 206 changes by changing the brightness by 10 percent. The first figure shows a shift by +10% for each color and the second figure -10%.

Similar to the brightness gradients but the following saturation gradients show a change of the RGB color 241, 215, 206 by changing the saturation by 10% instead.



■ 241, 215, 206

255, 255, 255

■ 241, 215, 206

■ 213, 187, 179

■ 185, 160, 152

■ 158, 134, 126

■ 131, 109, 101

■ 106, 84, 77

■ 81, 61, 54

■ 58, 39, 33

■ 36, 19, 10

■ 0, 0, 0

241, 215, 206

241, 215, 206

241, 197, 182

241, 233, 230

241, 179, 158

241, 251, 254

241, 161, 134

241, 255, 255

241, 143, 110

241, 125, 86

241, 108, 61

241, 90, 37

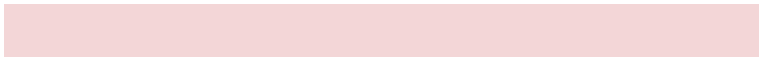
241, 72, 13

241, 62, 0

# Harmonies

## Analogous

The Analogous color harmony consists of three colors that are next to each other on the color wheel.



243, 214, 215



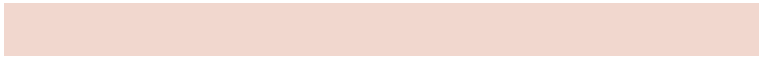
241, 215, 206



234, 218, 201

# Triad

The Triadic color harmony groups three colors that are evenly spaced from another and form a triangle on the color wheel.



241, 215, 206



201, 226, 215



216, 219, 240

# Complementary

The Complementary color scheme is a pair of colors which are on the opposite of each other on the color wheel.



241, 215, 206



206, 232, 241

# Split Complementary

Split-complementary colors differ from the complementary color scheme. The scheme consists of three colors, the original color and two neighbors of the complement color.



204, 223, 240



241, 215, 206



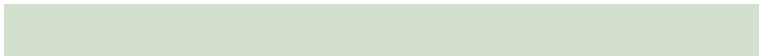
195, 226, 225

# Square

The Square scheme is like the rectangle color scheme, but the four colors are evenly spaced on the color wheel.



241, 215, 206



211, 224, 206



196, 225, 235



229, 216, 235

# Rectangle

The Rectangle color scheme consists of four colors that form a rectangle on the color wheel.



241, 215, 206



227, 220, 200



196, 225, 235



212, 220, 241



# Sweetspot

The Sweet Spot groups the original color and five complimentary colors.



241, 215, 206



255, 247, 245



241, 206, 232



128, 123, 121



0, 0, 0



128, 128, 128

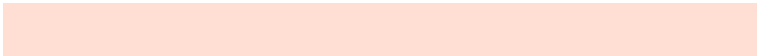


# Same Dimension

The Same Dimension uses a secret algorithm to generate beautiful new colors.



241, 215, 206



255, 223, 212



241, 232, 206



120, 111, 108



184, 47, 0



56, 14, 0

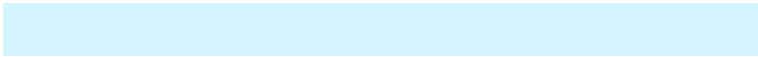


# Inverse Universe

The Inverse Universe completely reimagines the original color for something new.



206, 232, 241



212, 244, 255



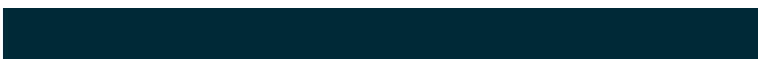
206, 215, 241



108, 117, 120



0, 136, 184

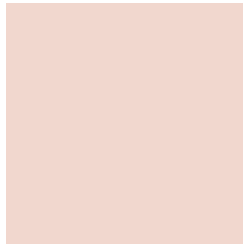


0, 42, 56



# Previews

## White Background



This preview shows how the RGB color 241, 215, 206 looks on a white background.

## Color Contrast Check

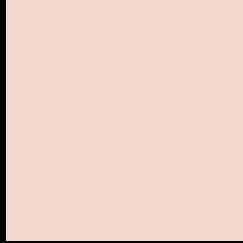
Large Text (above 18pt) WCAG AA × Fail

Any Text WCAG AA × Fail

Large Text (above 18pt) WCAG AAA × Fail

Any Text WCAG AAA × Fail

# Black Background



This preview shows how the RGB color 241, 215, 206 looks on a black background.

## Color Contrast Check

Large Text (above 18pt) WCAG AA ✓ Pass

Any Text WCAG AA ✓ Pass

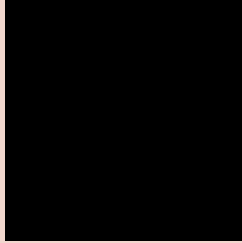
Large Text (above 18pt) WCAG AAA ✓ Pass

Any Text WCAG AAA ✓ Pass

If you want to check with other color combinations, try the [Color Contrast Checker](#).



## RGB 241, 215, 206 Background



This preview shows how black text looks on a background with the RGB color 241, 215, 206.

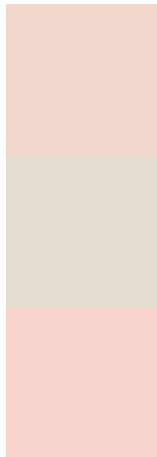


This preview shows how white text looks on a background with the RGB color 241, 215, 206.

# Color Blindness Simulation

Color vision deficiency is a very complex topic, and I could not describe the different causes any better than Wikipedia does, so if you want to learn more, you should check out their [article about color blindness](#).

## Dichromacy



**Original Color**  
[241, 215, 206](#)

**Protanopia**  
[227, 220, 208](#)

**Deuteranopia**  
[247, 213, 206](#)



# Tritanopia

244, 212, 228

# Trichromacy



**Original Color**

241, 215, 206

**Protanomaly**

232, 218, 207

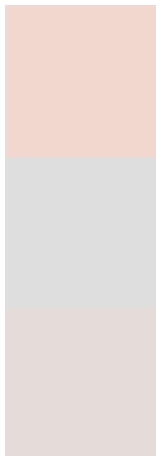
**Deuteranomaly**

245, 214, 206

**Tritanomaly**

243, 213, 220

# Monochromacy



**Original Color**

241, 215, 206

**Achromatopsia**

222, 222, 222

**Achromatomaly**

229, 219, 216

# CSS Examples

## Text

The CSS property to change the color of the text to RGB 241, 215, 206 is called "color". The color property can be set on classes, ids or directly on the HTML element.

This example shows how text in the color rgb(241, 215, 206) looks like.

```
.text, #text, p{  
    color:rgb(241, 215, 206)  
}
```

If you want to add a text shadow in that color use the text-shadow property, you can generate a text shadow directly with our [CSS Text Shadow Generator](#).

Here you see how black text with a 4 pixel rgb(241, 215, 206) colored shadow looks like.

```
.shadow{ text-shadow: 4px 4px 2px rgb(241, 215, 206) }
```

## Border

The CSS property to change the border of an element to RGB 241, 215, 206 is called "border". The border property can be set on classes, ids or directly on the HTML element.

This example shows the color as border, it can be applied via the CSS property "border" or "border-color".

```
.border, #border, table{ border:4px solid rgb(241, 215, 206) }
```

If only the border color should be changed use the property `border-color`.

```
.border{ border-color:rgb(241, 215, 206) }
```

If you want to add a box shadow in that color use:

Here you see how a box with a 4 pixel `rgb(241, 215, 206)` colored shadow looks like.

```
.boxshadow{ -moz-box-shadow:4px 4px 4px  
4px rgb(241, 215, 206); -webkit-box-  
shadow:4px 4px 4px 4px rgb(241, 215, 206);  
box-shadow:4px 4px 4px 4px rgb(241, 215,  
206) }
```

# Background

The CSS property to change the background color of an element to RGB 241, 215, 206 is called "background". The background property can be set on classes, ids or directly on the HTML element.

```
.background, #background, body{  
background: rgb(241, 215, 206) }
```

If only the background color should be changed can be used:

```
.background{ background-color: rgb(241,  
215, 206) }
```

This example shows the color as background, it is applied via the CSS property "background".

To optimize and compress your CSS code, you can use our [online CSS compressor and optimizer](#) based on csstidy. If you want to create a linear or radial gradient as background or border, check our [CSS Gradient Generator](#).



Hey! You found this booklet interesting? Support Converting Colors with the new Membership Option!

The pro membership hides all ads, plus gives you double the colors in the color bucket, and more awesome pro features!

**[Learn more, Memberships starting at \\$2.50/m!](#)**

**Follow me  
on Twitter!**

@ConvertingColor