

Converting Colors

RGB(242, 189, 205)

Have a look what the booklet for
RGB(242, 189, 205) contains.

RGB(242, 189, 205)	3
<i>Conversions</i>	4
<i>Details</i>	6
<i>Harmonies</i>	11
<i>Previews</i>	23
<i>Color Blindness Simulation</i>	26
<i>CSS Examples</i>	29

Color

RGB(242, 189, 205)

Conversions

Conversions Part 1

Format	Color
Hex	F2BDCD
RGB	242, 189, 205
RGB Percent	95%, 74%, 80%
CMY	0.0510, 0.2588, 0.1961
CMYK	0.00, 0.22, 0.15, 0.05
HSL	342°, 67%, 85%
HSV	342°, 22%, 95%
XYZ	65.8350, 59.6802, 65.8072
YIQ	206.6710, 26.4520, 16.2120

Conversions

Conversions Part 2

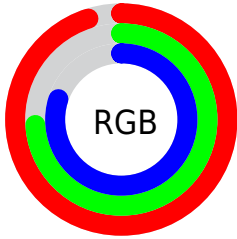
Format	Color
R _Y B	242, 189, 205
Decimal	15908301
CIE Lab	81.66, 21.43, -0.71
CIE LCh	82, 21.440, 358.102
Yxy	59.6802, 0.3441, 0.3119
Android (android.graphics.Color)	4294098381 (0xFF2BD3D)
YUV	206.6710, -0.8238, 30.9835
Hunter-Lab	77.2530, 16.9250, 3.5715

Details

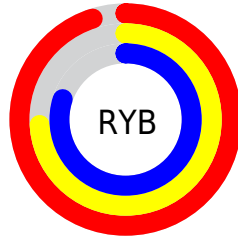
The RGB color **242, 189, 205** is a light color, and the websafe version is hex **FFCCCC**, and the color name is **orchid pink**. A complement of this color would be **189, 242, 226**, and the grayscale version is **207, 207, 207**.

A 20% lighter version of the original color is **255, 245, 255**, and **185, 135, 151** is the 20% darker color. If you saturate the color by 10%, you get **242, 165, 188**, and if you desaturate by 10%, it is **242, 213, 222**.

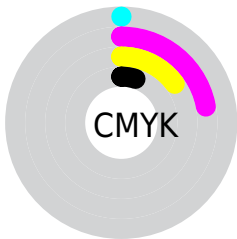
Distribution



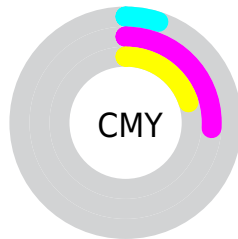
- Red (95%)
- Green (74%)
- Blue (80%)



- Red (95%)
- Yellow (74%)
- Blue (80%)



- Cyan (0%)
- Magenta (22%)
- Yellow (15%)
- Black (5%)





- Cyan (5%)
- Magenta (26%)
- Yellow (20%)

Brightness & Saturation Gradients

These gradients show how the RGB color 242, 189, 205 changes by changing the brightness by 10 percent. The first figure shows a shift by +10% for each color and the second figure -10%.

Similar to the brightness gradients but the following saturation gradients show a change of the RGB color 242, 189, 205 by changing the saturation by 10% instead.

 242, 189, 205

 242, 189, 205

255, 255, 255

 213, 162, 178

 255, 245, 255

 185, 135, 151

 158, 110, 125

 131, 85, 100

 105, 61, 76

 80, 39, 54

 56, 17, 32

 37, 0, 9

 0, 0, 0

■ 242, 189, 205

■ 242, 189, 205

■ 242, 165, 188

■ 242, 213, 222

■ 242, 141, 171

■ 242, 237, 239

■ 242, 116, 154

■ 242, 255, 255

■ 242, 92, 137

■ 242, 68, 121

■ 242, 44, 104

■ 242, 20, 87

■ 242, 0, 73

Harmonies

Analogous

The Analogous color harmony consists of three colors that are next to each other on the color wheel.



228, 192, 224



242, 189, 205



245, 190, 185

Triad

The Triadic color harmony groups three colors that are evenly spaced from another and form a triangle on the color wheel.



242, 189, 205



198, 208, 167



157, 211, 236

Complementary

The Complementary color scheme is a pair of colors which are on the opposite of each other on the color wheel.



242, 189, 205



189, 242, 226

Split Complementary

Split-complementary colors differ from the complementary color scheme. The scheme consists of three colors, the original color and two neighbors of the complement color.



148, 214, 221



242, 189, 205



175, 212, 181

Square

The Square scheme is like the rectangle color scheme, but the four colors are evenly spaced on the color wheel.



242, 189, 205



220, 201, 163



156, 215, 201



178, 205, 243

Rectangle

The Rectangle color scheme consists of four colors that form a rectangle on the color wheel.



242, 189, 205



240, 193, 174



156, 215, 201



152, 212, 232

Sweetspot

The Sweet Spot groups the original color and five complimentary colors.



242, 189, 205



255, 237, 243



225, 189, 242



128, 117, 120



0, 0, 0



128, 128, 128

Same Dimension

The Same Dimension uses a secret algorithm to generate beautiful new colors.



242, 189, 205



255, 189, 209



242, 199, 189



120, 108, 111



184, 0, 55



56, 0, 17

Inverse Universe

The Inverse Universe completely reimagines the original color for something new.



242, 189, 205



255, 189, 209



189, 232, 242



120, 108, 111



184, 0, 55



56, 0, 17

Previews

White Background



This preview shows how the RGB color 242, 189, 205 looks on a white background.

Color Contrast Check

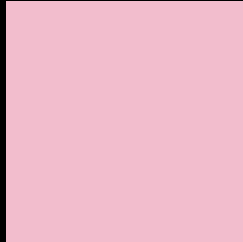
Large Text (above 18pt) WCAG AA × Fail

Any Text WCAG AA × Fail

Large Text (above 18pt) WCAG AAA × Fail

Any Text WCAG AAA × Fail

Black Background



This preview shows how the RGB color 242, 189, 205 looks on a black background.

Color Contrast Check

Large Text (above 18pt) WCAG AA ✓ Pass

Any Text WCAG AA ✓ Pass

Large Text (above 18pt) WCAG AAA ✓ Pass

Any Text WCAG AAA ✓ Pass

If you want to check with other color combinations, try the [Color Contrast Checker](#).

RGB 242, 189, 205 Background



This preview shows how black text looks on a background with the RGB color 242, 189, 205.



This preview shows how white text looks on a background with the RGB color 242, 189, 205.

Color Blindness Simulation

Color vision deficiency is a very complex topic, and I could not describe the different causes any better than Wikipedia does, so if you want to learn more, you should check out their [article about color blindness](#).


Dichromacy



Original Color
242, 189, 205

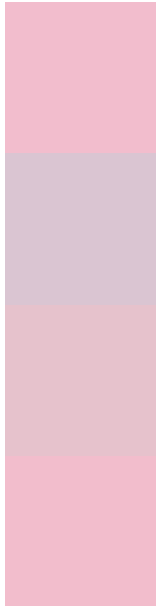
Protanopia
204, 202, 213

Deuteranopia
223, 197, 204



Tritanopia
242, 189, 204

Trichromacy



Original Color

242, 189, 205

Protanomaly

218, 197, 210

Deuteranomaly

230, 194, 204

Tritanomaly

242, 189, 204

Monochromacy



Original Color

242, 189, 205

Achromatopsia

207, 207, 207

Achromatomaly

220, 200, 206

CSS Examples

Text

The CSS property to change the color of the text to RGB 242, 189, 205 is called "color". The color property can be set on classes, ids or directly on the HTML element.

This example shows how text in the color rgb(242, 189, 205) looks like.

```
.text, #text, p{  
    color:rgb(242, 189, 205)  
}
```

If you want to add a text shadow in that color use the text-shadow property, you can generate a text shadow directly with our [CSS Text Shadow Generator](#).

Here you see how black text with a 4 pixel rgb(242, 189, 205) colored shadow looks like.

```
.shadow{ text-shadow: 4px 4px 2px rgb(242, 189, 205) }
```

Border

The CSS property to change the border of an element to RGB 242, 189, 205 is called "border". The border property can be set on classes, ids or directly on the HTML element.

This example shows the color as border, it can be applied via the CSS property "border" or "border-color".

```
.border, #border, table{ border:4px solid rgb(242, 189, 205) }
```

If only the border color should be changed use the property `border-color`.

```
.border{ border-color:rgb(242, 189, 205) }
```

If you want to add a box shadow in that color use:

Here you see how a box with a 4 pixel `rgb(242, 189, 205)` colored shadow looks like.

```
.boxshadow{ -moz-box-shadow:4px 4px 4px  
4px rgb(242, 189, 205); -webkit-box-  
shadow:4px 4px 4px 4px rgb(242, 189, 205);  
box-shadow:4px 4px 4px 4px rgb(242, 189,  
205) }
```

Background

The CSS property to change the background color of an element to RGB 242, 189, 205 is called "background". The background property can be set on classes, ids or directly on the HTML element.

```
.background, #background, body{  
background: rgb(242, 189, 205) }
```

If only the background color should be changed can be used:

```
.background{ background-color: rgb(242,  
189, 205) }
```

This example shows the color as background, it is applied via the CSS property "background".

To optimize and compress your CSS code, you can use our [online CSS compressor and optimizer](#) based on csstidy. If you want to create a linear or radial gradient as background or border, check our [CSS Gradient Generator](#).

Hey! You found this booklet interesting? Support Converting Colors with the new Membership Option!

The pro membership hides all ads, plus gives you double the colors in the color bucket, and more awesome pro features!

[Learn more, Memberships starting at \\$2.50/m!](#)

**Follow me
on Twitter!**

@ConvertingColor