

Converting Colors

RGB(242, 195, 173)

Have a look what the booklet for
RGB(242, 195, 173) contains.

RGB(242, 195, 173)	3
<i>Conversions</i>	4
<i>Details</i>	6
<i>Harmonies</i>	11
<i>Previews</i>	23
<i>Color Blindness Simulation</i>	26
<i>CSS Examples</i>	29

Color

RGB(242, 195, 173)

Conversions

Conversions Part 1

Format	Color
Hex	F2C3AD
RGB	242, 195, 173
RGB Percent	95%, 76%, 68%
CMY	0.0510, 0.2353, 0.3216
CMYK	0.00, 0.19, 0.29, 0.05
HSL	19°, 73%, 81%
HSV	19°, 29%, 95%
XYZ	63.6759, 60.9246, 47.9387
YIQ	206.5450, 35.0740, 3.1220

Conversions

Conversions Part 2

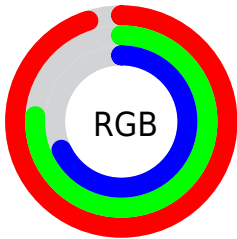
Format	Color
R _Y B	242, 205, 173
Decimal	15909805
CIE Lab	82.34, 13.63, 17.40
CIE LCh	82, 22.103, 51.919
Yxy	60.9246, 0.3691, 0.3531
Android (android.graphics.Color)	4294099885 (0xFFFF2C3AD)
YUV	206.5450, -16.5377, 31.0940
Hunter-Lab	78.0542, 9.0238, 18.2237

Details

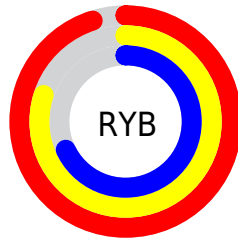
The RGB color **242, 195, 173** is a light color, and the websafe version is hex **FFCCCC**. A complement of this color would be **173, 220, 242**, and the grayscale version is **207, 207, 207**.

A 20% lighter version of the original color is **255, 252, 228**, and **185, 141, 121** is the 20% darker color. If you saturate the color by 10%, you get **242, 179, 149**, and if you desaturate by 10%, it is **242, 211, 197**.

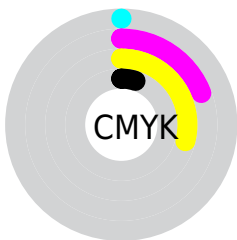
Distribution



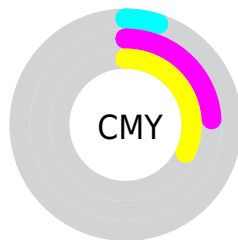
- Red (95%)
- Green (76%)
- Blue (68%)



- Red (95%)
- Yellow (80%)
- Blue (68%)



- Cyan (0%)
- Magenta (19%)
- Yellow (29%)
- Black (5%)




- Cyan (5%)
- Magenta (24%)
- Yellow (32%)

Brightness & Saturation Gradients


These gradients show how the RGB color 242, 195, 173 changes by changing the brightness by 10 percent. The first figure shows a shift by +10% for each color and the second figure -10%.


Similar to the brightness gradients but the following saturation gradients show a change of the RGB color 242, 195, 173 by changing the saturation by 10% instead.

 242, 195, 173

255, 255, 255

 255, 252, 228

 242, 195, 173

 213, 168, 146

 185, 141, 121

 157, 116, 96

 130, 91, 72

 104, 67, 49

 79, 45, 28

 55, 24, 3

 32, 0, 0

 0, 0, 0

■ 242, 195, 173

■ 242, 195, 173

■ 242, 179, 149

■ 242, 211, 197

■ 242, 162, 125

■ 242, 228, 221

■ 242, 146, 100

■ 242, 244, 246

■ 242, 129, 76

■ 242, 255, 255

■ 242, 113, 52

■ 242, 96, 28

■ 242, 80, 4

■ 242, 77, 0

Harmonies

Analogous

The Analogous color harmony consists of three colors that are next to each other on the color wheel.



248, 191, 190



242, 195, 173



226, 202, 164

Triad

The Triadic color harmony groups three colors that are evenly spaced from another and form a triangle on the color wheel.



242, 195, 173



160, 217, 198



201, 201, 243

Complementary

The Complementary color scheme is a pair of colors which are on the opposite of each other on the color wheel.



242, 195, 173



173, 220, 242

Split Complementary

Split-complementary colors differ from the complementary color scheme. The scheme consists of three colors, the original color and two neighbors of the complement color.



174, 208, 245



242, 195, 173



149, 217, 220

Square

The Square scheme is like the rectangle color scheme, but the four colors are evenly spaced on the color wheel.



242, 195, 173



181, 214, 179



154, 214, 237



226, 195, 231

Rectangle

The Rectangle color scheme consists of four colors that form a rectangle on the color wheel.



242, 195, 173



212, 206, 164



154, 214, 237



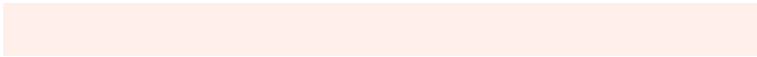
192, 204, 245

Sweetspot

The Sweet Spot groups the original color and five complimentary colors.



242, 195, 173



255, 239, 232



242, 173, 220



128, 118, 113



0, 0, 0



128, 128, 128

Same Dimension

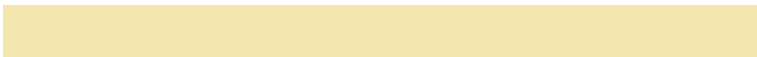
The Same Dimension uses a secret algorithm to generate beautiful new colors.



242, 195, 173



255, 196, 168



242, 229, 173



120, 112, 108



184, 59, 0



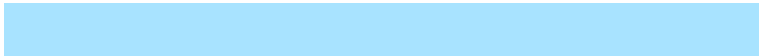
56, 18, 0

Inverse Universe

The Inverse Universe completely reimagines the original color for something new.



173, 220, 242



168, 227, 255



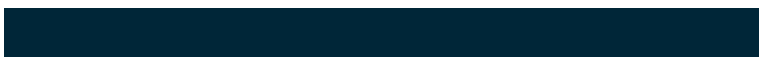
173, 186, 242



108, 116, 120



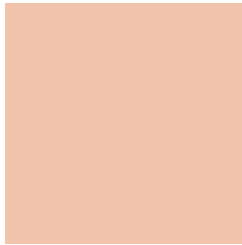
0, 125, 184



0, 38, 56

Previews

White Background



This preview shows how the RGB color 242, 195, 173 looks on a white background.

Color Contrast Check

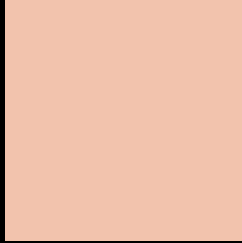
Large Text (above 18pt) WCAG AA × Fail

Any Text WCAG AA × Fail

Large Text (above 18pt) WCAG AAA × Fail

Any Text WCAG AAA × Fail

Black Background



This preview shows how the RGB color 242, 195, 173 looks on a black background.

Color Contrast Check

Large Text (above 18pt) WCAG AA ✓ Pass

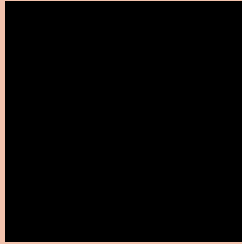
Any Text WCAG AA ✓ Pass

Large Text (above 18pt) WCAG AAA ✓ Pass

Any Text WCAG AAA ✓ Pass

If you want to check with other color combinations, try the [Color Contrast Checker](#).

RGB 242, 195, 173 Background



This preview shows how black text looks on a background with the RGB color 242, 195, 173.

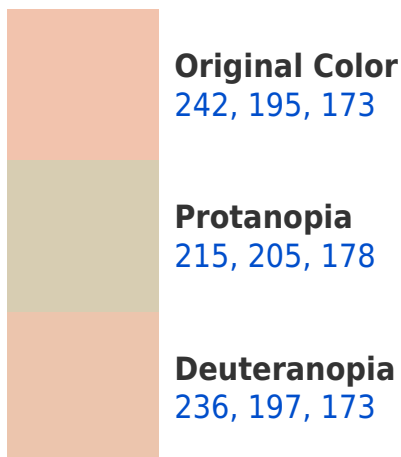



This preview shows how white text looks on a background with the RGB color 242, 195, 173.

Color Blindness Simulation

Color vision deficiency is a very complex topic, and I could not describe the different causes any better than Wikipedia does, so if you want to learn more, you should check out their [article about color blindness](#).

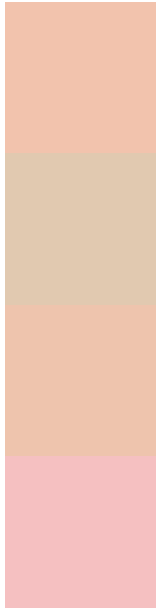
Dichromacy





Tritanopia
246, 190, 205

Trichromacy



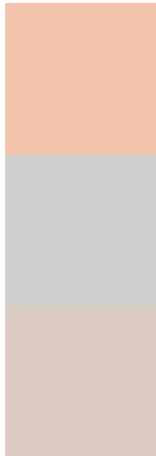
Original Color
242, 195, 173

Protanomaly
225, 201, 176

Deuteranomaly
238, 196, 173

Tritanomaly
245, 192, 193

Monochromacy



Original Color
242, 195, 173

Achromatopsia
207, 207, 207

Achromatomaly
220, 203, 195

CSS Examples

Text

The CSS property to change the color of the text to RGB 242, 195, 173 is called "color". The color property can be set on classes, ids or directly on the HTML element.

This example shows how text in the color rgb(242, 195, 173) looks like.

```
.text, #text, p{  
    color:rgb(242, 195, 173)  
}
```

If you want to add a text shadow in that color use the text-shadow property, you can generate a text shadow directly with our [CSS Text Shadow Generator](#).

Here you see how black text with a 4 pixel rgb(242, 195, 173) colored shadow looks like.

```
.shadow{ text-shadow: 4px 4px 2px rgb(242, 195, 173) }
```

Border

The CSS property to change the border of an element to RGB 242, 195, 173 is called "border". The border property can be set on classes, ids or directly on the HTML element.

This example shows the color as border, it can be applied via the CSS property "border" or "border-color".

```
.border, #border, table{ border:4px solid rgb(242, 195, 173) }
```

If only the border color should be changed use the property `border-color`.

```
.border{ border-color:rgb(242, 195, 173) }
```

If you want to add a box shadow in that color use:

Here you see how a box with a 4 pixel `rgb(242, 195, 173)` colored shadow looks like.

```
.boxshadow{ -moz-box-shadow:4px 4px 4px  
4px rgb(242, 195, 173); -webkit-box-  
shadow:4px 4px 4px 4px rgb(242, 195, 173);  
box-shadow:4px 4px 4px 4px rgb(242, 195,  
173) }
```

Background

The CSS property to change the background color of an element to RGB 242, 195, 173 is called "background". The background property can be set on classes, ids or directly on the HTML element.

```
.background, #background, body{  
background: rgb(242, 195, 173) }
```

If only the background color should be changed can be used:

```
.background{ background-color: rgb(242,  
195, 173) }
```

This example shows the color as background, it is applied via the CSS property "background".

To optimize and compress your CSS code, you can use our [online CSS compressor and optimizer](#) based on csstidy. If you want to create a linear or radial gradient as background or border, check our [CSS Gradient Generator](#).

Hey! You found this booklet interesting? Support Converting Colors with the new Membership Option!

The pro membership hides all ads, plus gives you double the colors in the color bucket, and more awesome pro features!

[Learn more, Memberships starting at \\$2.50/m!](#)

**Follow me
on Twitter!**

@ConvertingColor