

Converting Colors

RGB(243, 180, 197)

Have a look what the booklet for
RGB(243, 180, 197) contains.

RGB(243, 180, 197)	3
<i>Conversions</i>	4
<i>Details</i>	6
<i>Harmonies</i>	11
<i>Previews</i>	23
<i>Color Blindness Simulation</i>	26
<i>CSS Examples</i>	29

Color

RGB(243, 180, 197)

Conversions

Conversions Part 1

Format	Color
Hex	F3B4C5
RGB	243, 180, 197
RGB Percent	95%, 71%, 77%
CMY	0.0471, 0.2941, 0.2275
CMYK	0.00, 0.26, 0.19, 0.05
HSL	344°, 72%, 83%
HSV	344°, 26%, 95%
XYZ	63.3615, 55.7284, 60.2405
YIQ	200.7750, 32.0910, 18.6430

Conversions

Conversions Part 2

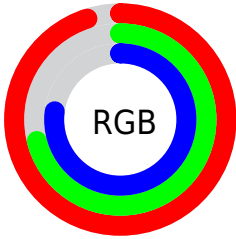
Format	Color
R_{YB}	243, 180, 197
Decimal	15971525
CIE _{Lab}	79.46, 25.32, 0.40
CIE _{LCh}	79, 25.325, 0.899
Yxy	55.7284, 0.3533, 0.3108
Android (android.graphics.Color)	4294161605 (0xFFFF3B4C5)
YUV	200.7750, -1.8611, 37.0313
Hunter-Lab	74.6515, 20.8642, 4.4116

Details

The RGB color **243, 180, 197** is a light color, and the websafe version is hex **FFCCCC**. A complement of this color would be **180, 243, 226**, and the grayscale version is **201, 201, 201**.

A 20% lighter version of the original color is **255, 236, 254**, and **186, 127, 143** is the 20% darker color. If you saturate the color by 10%, you get **243, 156, 179**, and if you desaturate by 10%, it is **243, 204, 215**.

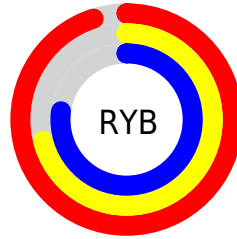
Distribution



Red (95%)

Green (71%)

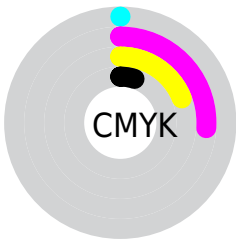
Blue (77%)



Red (95%)

Yellow (71%)

Blue (77%)

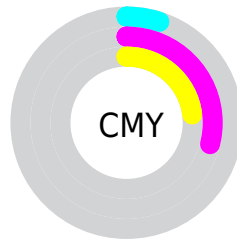


Cyan (0%)

Magenta (26%)

Yellow (19%)

Black (5%)



Cyan (5%)

Magenta (29%)

Yellow (23%)

Brightness & Saturation Gradients

These gradients show how the RGB color 243, 180, 197 changes by changing the brightness by 10 percent. The first figure shows a shift by +10% for each color and the second figure -10%.


Similar to the brightness gradients but the following saturation gradients show a change of the RGB color 243, 180, 197 by changing the saturation by 10% instead.

 243, 180, 197

255, 255, 255

 255, 236, 254

 243, 180, 197

 214, 153, 170

 186, 127, 143

 158, 101, 118

 131, 77, 93

 105, 53, 70

 80, 30, 47

 55, 7, 27

 37, 0, 1

 0, 0, 0

■ 243, 180, 197

■ 243, 180, 197

■ 243, 156, 179

■ 243, 204, 215

■ 243, 131, 162

■ 243, 229, 232

■ 243, 107, 144

■ 243, 253, 250

■ 243, 83, 126

■ 243, 255, 255

■ 243, 59, 108

■ 243, 34, 91

■ 243, 10, 73

■ 243, 0, 66

Harmonies

Analogous

The Analogous color harmony consists of three colors that are next to each other on the color wheel.



228, 183, 220



243, 180, 197



245, 182, 174

Triad

The Triadic color harmony groups three colors that are evenly spaced from another and form a triangle on the color wheel.



243, 180, 197



188, 203, 156



142, 205, 237

Complementary

The Complementary color scheme is a pair of colors which are on the opposite of each other on the color wheel.



243, 180, 197



180, 243, 226

Split Complementary

Split-complementary colors differ from the complementary color scheme. The scheme consists of three colors, the original color and two neighbors of the complement color.



130, 209, 220



243, 180, 197



161, 208, 173

Square

The Square scheme is like the rectangle color scheme, but the four colors are evenly spaced on the color wheel.



243, 180, 197



214, 196, 150



139, 210, 197



170, 199, 244

Rectangle

The Rectangle color scheme consists of four colors that form a rectangle on the color wheel.



243, 180, 197



239, 185, 161



139, 210, 197



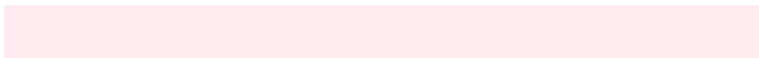
135, 207, 233

Sweetspot

The Sweet Spot groups the original color and five complimentary colors.



243, 180, 197



255, 235, 240



225, 180, 243



128, 115, 118



0, 0, 0



128, 128, 128

Same Dimension

The Same Dimension uses a secret algorithm to generate beautiful new colors.



243, 180, 197



255, 176, 197



243, 194, 180



122, 110, 113



186, 0, 50



59, 0, 16

Inverse Universe

The Inverse Universe completely reimagines the original color for something new.



243, 180, 197



255, 176, 197



180, 229, 243



122, 110, 113



186, 0, 50



59, 0, 16

Previews

White Background



This preview shows how the RGB color 243, 180, 197 looks on a white background.

Color Contrast Check

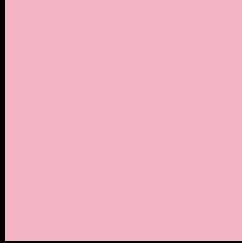
Large Text (above 18pt) WCAG AA × Fail

Any Text WCAG AA × Fail

Large Text (above 18pt) WCAG AAA × Fail

Any Text WCAG AAA × Fail

Black Background



This preview shows how the RGB color 243, 180, 197 looks on a black background.

Color Contrast Check

Large Text (above 18pt) WCAG AA ✓ Pass

Any Text WCAG AA ✓ Pass

Large Text (above 18pt) WCAG AAA ✓ Pass

Any Text WCAG AAA ✓ Pass

If you want to check with other color combinations, try the [Color Contrast Checker](#).

RGB 243, 180, 197 Background



This preview shows how black text looks on a background with the RGB color 243, 180, 197.



This preview shows how white text looks on a background with the RGB color 243, 180, 197.

Color Blindness Simulation

Color vision deficiency is a very complex topic, and I could not describe the different causes any better than Wikipedia does, so if you want to learn more, you should check out their [article about color blindness](#).


Dichromacy



Original Color
243, 180, 197

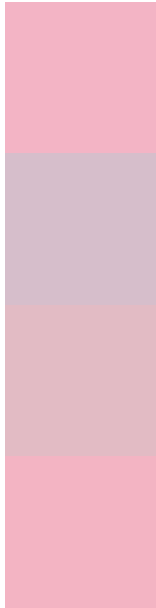
Protanopia
198, 196, 206

Deuteranopia
217, 191, 195



Tritanopia
243, 180, 194

Trichromacy



Original Color
243, 180, 197

Protanomaly
214, 190, 203

Deuteranomaly
226, 187, 196

Tritanomaly
243, 180, 195

Monochromacy



Original Color
243, 180, 197

Achromatopsia
201, 201, 201

Achromatomaly
216, 193, 200

CSS Examples

Text

The CSS property to change the color of the text to RGB 243, 180, 197 is called "color". The color property can be set on classes, ids or directly on the HTML element.

This example shows how text in the color rgb(243, 180, 197) looks like.

```
.text, #text, p{  
    color:rgb(243, 180, 197)  
}
```

If you want to add a text shadow in that color use the text-shadow property, you can generate a text shadow directly with our [CSS Text Shadow Generator](#).

Here you see how black text with a 4 pixel rgb(243, 180, 197) colored shadow looks like.

```
.shadow{ text-shadow: 4px 4px 2px rgb(243, 180, 197) }
```

Border

The CSS property to change the border of an element to RGB 243, 180, 197 is called "border". The border property can be set on classes, ids or directly on the HTML element.

This example shows the color as border, it can be applied via the CSS property "border" or "border-color".

```
.border, #border, table{ border:4px solid rgb(243, 180, 197) }
```

If only the border color should be changed use the property `border-color`.

```
.border{ border-color:rgb(243, 180, 197) }
```

If you want to add a box shadow in that color use:

Here you see how a box with a 4 pixel `rgb(243, 180, 197)` colored shadow looks like.

```
.boxshadow{ -moz-box-shadow:4px 4px 4px  
4px rgb(243, 180, 197); -webkit-box-  
shadow:4px 4px 4px 4px rgb(243, 180, 197);  
box-shadow:4px 4px 4px 4px rgb(243, 180,  
197) }
```

Background

The CSS property to change the background color of an element to RGB 243, 180, 197 is called "background". The background property can be set on classes, ids or directly on the HTML element.

```
.background, #background, body{  
background: rgb(243, 180, 197) }
```

If only the background color should be changed can be used:

```
.background{ background-color: rgb(243,  
180, 197) }
```

This example shows the color as background, it is applied via the CSS property "background".

To optimize and compress your CSS code, you can use our [online CSS compressor and optimizer](#) based on csstidy. If you want to create a linear or radial gradient as background or border, check our [CSS Gradient Generator](#).

Hey! You found this booklet interesting? Support Converting Colors with the new Membership Option!

The pro membership hides all ads, plus gives you double the colors in the color bucket, and more awesome pro features!

[Learn more, Memberships starting at \\$2.50/m!](#)

**Follow me
on Twitter!**

@ConvertingColor