

Converting Colors

RGB(246, 77, 102)

Have a look what the booklet for
RGB(246, 77, 102) contains.

RGB(246, 77, 102)	3
<i>Conversions</i>	4
<i>Details</i>	6
<i>Harmonies</i>	11
<i>Previews</i>	23
<i>Color Blindness Simulation</i>	26
<i>CSS Examples</i>	29

Color

RGB(246, 77, 102)

Conversions

Conversions Part 1

Format	Color
Hex	F64D66
RGB	246, 77, 102
RGB Percent	96%, 30%, 40%
CMY	0.0353, 0.6980, 0.6000
CMYK	0.00, 0.69, 0.59, 0.04
HSL	351°, 90%, 63%
HSV	351°, 69%, 96%
XYZ	43.0582, 25.8599, 15.2924
YIQ	130.3810, 92.6990, 43.6030

Conversions

Conversions Part 2

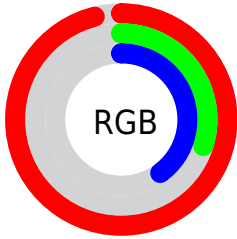
Format	Color
R_{YB}	246, 77, 102
Decimal	16141670
CIE _{Lab}	57.90, 65.46, 23.46
CIE _{LCh}	58, 69.536, 19.717
Yxy	25.8599, 0.5113, 0.3071
Android (android.graphics.Color)	4294331750 (0xFFFF64D66)
YUV	130.3810, -13.9918, 101.3979
Hunter-Lab	50.8526, 62.1483, 17.7671

Details

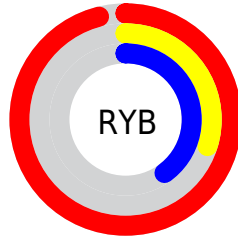
The RGB color **246, 77, 102** is a dark color, and the websafe version is hex **FF3366**. The color can be described as middle washed rose. A complement of this color would be **77, 246, 221**, and the grayscale version is **130, 130, 130**.

A 20% lighter version of the original color is **255, 135, 153**, and **183, 0, 56** is the 20% darker color. If you saturate the color by 10%, you get **246, 52, 81**, and if you desaturate by 10%, it is **246, 102, 123**.

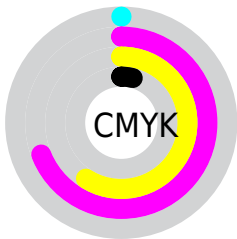
Distribution



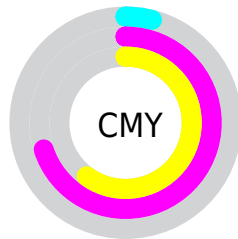
- Red (96%)
- Green (30%)
- Blue (40%)



- Red (96%)
- Yellow (30%)
- Blue (40%)



- Cyan (0%)
- Magenta (69%)
- Yellow (59%)
- Black (4%)



- Cyan (4%)
- Magenta (70%)
- Yellow (60%)

Brightness & Saturation Gradients

These gradients show how the RGB color 246, 77, 102 changes by changing the brightness by 10 percent. The first figure shows a shift by +10% for each color and the second figure -10%.

Similar to the brightness gradients but the following saturation gradients show a change of the RGB color 246, 77, 102 by changing the saturation by 10% instead.



246, 77, 102



246, 77, 102

255, 255, 255



214, 44, 78



255, 135, 153



183, 0, 56



255, 164, 179



152, 0, 35



255, 193, 207



121, 0, 14



255, 223, 235



91, 0, 1



255, 253, 255



62, 0, 3



26, 0, 1



0, 0, 0



246, 77, 102



246, 77, 102


 246, 52, 81

 246, 102, 123


 246, 28, 60

 246, 126, 144

 246, 3, 39

 246, 151, 165

 246, 0, 36

 246, 175, 186

 246, 200, 207

 246, 225, 228

 246, 249, 249

 246, 255, 255

Harmonies

Analogous

The Analogous color harmony consists of three colors that are next to each other on the color wheel.



237, 77, 163



246, 77, 102



226, 102, 45

Triad

The Triadic color harmony groups three colors that are evenly spaced from another and form a triangle on the color wheel.



246, 77, 102



44, 160, 53



0, 152, 255

Complementary

The Complementary color scheme is a pair of colors which are on the opposite of each other on the color wheel.



246, 77, 102



77, 246, 221

Split Complementary

Split-complementary colors differ from the complementary color scheme. The scheme consists of three colors, the original color and two neighbors of the complement color.



0, 163, 231



246, 77, 102



0, 165, 115

Square

The Square scheme is like the rectangle color scheme, but the four colors are evenly spaced on the color wheel.



246, 77, 102



129, 148, 0



0, 167, 179



90, 132, 255

Rectangle

The Rectangle color scheme consists of four colors that form a rectangle on the color wheel.



246, 77, 102



200, 121, 0



0, 167, 179



0, 157, 253

Sweetspot

The Sweet Spot groups the original color and five complimentary colors.



246, 77, 102



255, 201, 209



221, 77, 246



128, 96, 100



0, 0, 0



128, 128, 128

Same Dimension

The Same Dimension uses a secret algorithm to generate beautiful new colors.



246, 77, 102



255, 46, 77



246, 136, 77



122, 110, 112



186, 0, 28



59, 0, 9

Inverse Universe

The Inverse Universe completely reimagines the original color for something new.



246, 77, 102



255, 46, 77



77, 187, 246



122, 110, 112



186, 0, 28



59, 0, 9

Previews

White Background



This preview shows how the RGB color 246, 77, 102 looks on a white background.

Color Contrast Check

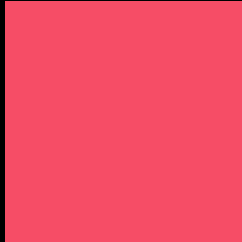
Large Text (above 18pt) WCAG AA ✓ Pass

Any Text WCAG AA ✗ Fail

Large Text (above 18pt) WCAG AAA ✗ Fail

Any Text WCAG AAA ✗ Fail

Black Background



This preview shows how the RGB color 246, 77, 102 looks on a black background.

Color Contrast Check

Large Text (above 18pt) WCAG AA ✓ Pass

Any Text WCAG AA ✓ Pass

Large Text (above 18pt) WCAG AAA ✓ Pass

Any Text WCAG AAA × Fail

If you want to check with other color combinations, try the [Color Contrast Checker](#).

RGB 246, 77, 102 Background



This preview shows how black text looks on a background with the RGB color 246, 77, 102.



This preview shows how white text looks on a background with the RGB color 246, 77, 102.

Color Blindness Simulation

Color vision deficiency is a very complex topic, and I could not describe the different causes any better than Wikipedia does, so if you want to learn more, you should check out their [article about color blindness](#).

Dichromacy



Original Color
246, 77, 102

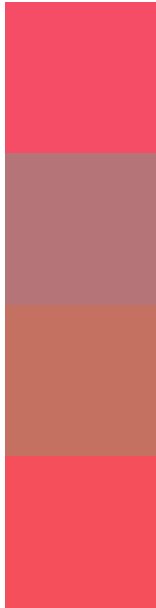
Protanopia
144, 139, 130

Deuteranopia
167, 133, 94



Tritanopia
245, 80, 85

Trichromacy



Original Color

246, 77, 102

Protanomaly

181, 116, 120

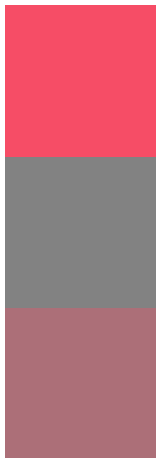
Deuteranomaly

196, 113, 97

Tritanomaly

245, 79, 91

Monochromacy



Original Color

246, 77, 102

Achromatopsia

130, 130, 130

Achromatomaly

172, 111, 120

CSS Examples

Text

The CSS property to change the color of the text to RGB 246, 77, 102 is called "color". The color property can be set on classes, ids or directly on the HTML element.

This example shows how text in the color rgb(246, 77, 102) looks like.

```
.text, #text, p{  
    color:rgb(246, 77, 102)  
}
```

If you want to add a text shadow in that color use the text-shadow property, you can generate a text shadow directly with our [CSS Text Shadow Generator](#).

Here you see how black text with a 4 pixel rgb(246, 77, 102) colored shadow looks like.

```
.shadow{ text-shadow: 4px 4px 2px rgb(246, 77, 102) }
```

Border

The CSS property to change the border of an element to RGB 246, 77, 102 is called "border". The border property can be set on classes, ids or directly on the HTML element.

This example shows the color as border, it can be applied via the CSS property "border" or "border-color".

```
.border, #border, table{ border:4px solid rgb(246, 77, 102) }
```

If only the border color should be changed use the property border-color.

```
.border{ border-color:rgb(246, 77, 102) }
```

If you want to add a box shadow in that color use:

Here you see how a box with a 4 pixel rgb(246, 77, 102) colored shadow looks like.

```
.boxshadow{ -moz-box-shadow:4px 4px 4px  
4px rgb(246, 77, 102); -webkit-box-  
shadow:4px 4px 4px 4px rgb(246, 77, 102);  
box-shadow:4px 4px 4px 4px rgb(246, 77,  
102) }
```

Background

The CSS property to change the background color of an element to RGB 246, 77, 102 is called "background". The background property can be set on classes, ids or directly on the HTML element.

```
.background, #background, body{  
background: rgb(246, 77, 102) }
```

If only the background color should be changed can be used:

```
.background{ background-color: rgb(246, 77,  
102) }
```

This example shows the color as background, it is applied via the CSS property "background".

To optimize and compress your CSS code, you can use our [online CSS compressor and optimizer](#) based on csstidy. If you want to create a linear or radial gradient as background or border, check our [CSS Gradient Generator](#).

Hey! You found this booklet interesting? Support Converting Colors with the new Membership Option!

The pro membership hides all ads, plus gives you double the colors in the color bucket, and more awesome pro features!

[Learn more, Memberships starting at \\$2.50/m!](#)

**Follow me
on Twitter!**

@ConvertingColor