

Converting Colors

RGB(247, 158, 103)

Have a look what the booklet for
RGB(247, 158, 103) contains.

RGB(247, 158, 103)	3
<i>Conversions</i>	4
<i>Details</i>	6
<i>Harmonies</i>	11
<i>Previews</i>	23
<i>Color Blindness Simulation</i>	26
<i>CSS Examples</i>	29

Color

RGB(247, 158, 103)

Conversions

Conversions Part 1

Format	Color
Hex	F79E67
RGB	247, 158, 103
RGB Percent	97%, 62%, 40%
CMY	0.0314, 0.3804, 0.5961
CMYK	0.00, 0.36, 0.58, 0.03
HSL	23°, 90%, 69%
HSV	23°, 58%, 97%
XYZ	53.0328, 45.2071, 18.7627
YIQ	178.3410, 70.6990, 1.7630

Conversions

Conversions Part 2

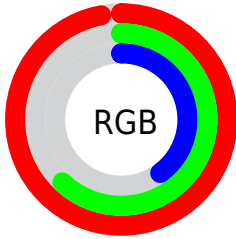
Format	Color
RYB	247, 192, 103
Decimal	16227943
CIELab	73.03, 27.89, 42.20
CIELCh	73, 50.583, 56.544
Yxy	45.2071, 0.4533, 0.3864
Android (android.graphics.Color)	4294418023 (0xFFFF79E67)
YUV	178.3410, -37.1431, 60.2139
Hunter-Lab	67.2363, 23.1290, 30.5202

Details

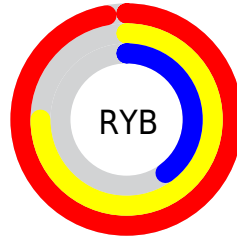
The RGB color **247, 158, 103** is a light color, and the websafe version is hex **FF9966**. A complement of this color would be **103, 192, 247**, and the grayscale version is **179, 179, 179**.

A 20% lighter version of the original color is **255, 213, 155**, and **187, 106, 54** is the 20% darker color. If you saturate the color by 10%, you get **247, 143, 78**, and if you desaturate by 10%, it is **247, 173, 128**.

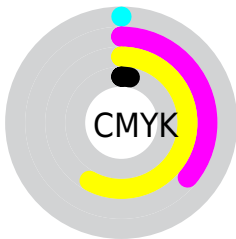
Distribution



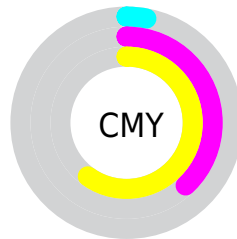
- Red (97%)
- Green (62%)
- Blue (40%)



- Red (97%)
- Yellow (75%)
- Blue (40%)



- Cyan (0%)
- Magenta (36%)
- Yellow (58%)
- Black (3%)



- Cyan (3%)
- Magenta (38%)
- Yellow (60%)

Brightness & Saturation Gradients

These gradients show how the RGB color 247, 158, 103 changes by changing the brightness by 10 percent. The first figure shows a shift by +10% for each color and the second figure -10%.

Similar to the brightness gradients but the following saturation gradients show a change of the RGB color 247, 158, 103 by changing the saturation by 10% instead.

 247, 158, 103

 247, 158, 103

255, 255, 255

 217, 132, 78

 255, 213, 155

 187, 106, 54

 255, 242, 182

 157, 81, 30

 255, 255, 210

 128, 57, 4

 255, 255, 239

 100, 34, 0

 72, 10, 0

 46, 0, 0

 0, 0, 0

 247, 158, 103

 247, 158, 103

■ 247, 143, 78

■ 247, 173, 128

■ 247, 127, 54

■ 247, 189, 152

■ 247, 112, 29

■ 247, 204, 177

■ 247, 97, 4

■ 247, 219, 202

■ 247, 94, 0

■ 247, 234, 227

■ 247, 250, 251

■ 247, 255, 255

Harmonies

Analogous

The Analogous color harmony consists of three colors that are next to each other on the color wheel.



255, 144, 140



247, 158, 103



212, 175, 84

Triad

The Triadic color harmony groups three colors that are evenly spaced from another and form a triangle on the color wheel.



247, 158, 103



0, 203, 172



174, 169, 255

Complementary

The Complementary color scheme is a pair of colors which are on the opposite of each other on the color wheel.



247, 158, 103



103, 192, 247

Split Complementary

Split-complementary colors differ from the complementary color scheme. The scheme consists of three colors, the original color and two neighbors of the complement color.



84, 186, 255



247, 158, 103



0, 202, 219

Square

The Square scheme is like the rectangle color scheme, but the four colors are evenly spaced on the color wheel.



247, 158, 103



109, 198, 126



0, 197, 255



232, 152, 231

Rectangle

The Rectangle color scheme consists of four colors that form a rectangle on the color wheel.



247, 158, 103



182, 185, 87



0, 197, 255



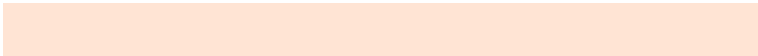
149, 175, 255

Sweetspot

The Sweet Spot groups the original color and five complimentary colors.



247, 158, 103



255, 228, 212



247, 103, 194



128, 112, 102



0, 0, 0



128, 128, 128

Same Dimension

The Same Dimension uses a secret algorithm to generate beautiful new colors.



247, 158, 103



255, 145, 77



247, 228, 103



122, 115, 110



186, 71, 0



59, 22, 0

Inverse Universe

The Inverse Universe completely reimagines the original color for something new.



103, 192, 247



77, 187, 255



103, 122, 247



110, 118, 122



0, 115, 186



0, 36, 59

Previews

White Background



This preview shows how the RGB color 247, 158, 103 looks on a white background.

Color Contrast Check

Large Text (above 18pt) WCAG AA × Fail

Any Text WCAG AA × Fail

Large Text (above 18pt) WCAG AAA × Fail

Any Text WCAG AAA × Fail

Black Background



This preview shows how the RGB color 247, 158, 103 looks on a black background.

Color Contrast Check

Large Text (above 18pt) WCAG AA ✓ Pass

Any Text WCAG AA ✓ Pass

Large Text (above 18pt) WCAG AAA ✓ Pass

Any Text WCAG AAA ✓ Pass

If you want to check with other color combinations, try the [Color Contrast Checker](#).

RGB 247, 158, 103 Background



This preview shows how black text looks on a background with the RGB color 247, 158, 103.



This preview shows how white text looks on a background with the RGB color 247, 158, 103.

Color Blindness Simulation

Color vision deficiency is a very complex topic, and I could not describe the different causes any better than Wikipedia does, so if you want to learn more, you should check out their [article about color blindness](#).


Dichromacy



Original Color
247, 158, 103

Protanopia
196, 180, 111

Deuteranopia
219, 171, 100



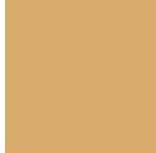
Tritanopia
251, 151, 162

Trichromacy



Original Color

247, 158, 103



Protanomaly

215, 172, 108



Deuteranomaly

229, 166, 101



Tritanomaly

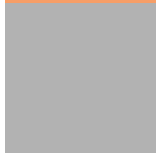
250, 154, 141

Monochromacy



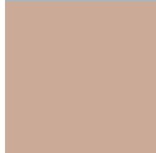
Original Color

247, 158, 103



Achromatopsia

178, 178, 178



Achromatomaly

203, 171, 151

CSS Examples

Text

The CSS property to change the color of the text to RGB 247, 158, 103 is called "color". The color property can be set on classes, ids or directly on the HTML element.

This example shows how text in the color `rgb(247, 158, 103)` looks like.

```
.text, #text, p{  
    color:rgb(247, 158, 103)  
}
```

If you want to add a text shadow in that color use the text-shadow property, you can generate a text shadow directly with our [CSS Text Shadow Generator](#).

Here you see how black text with a 4 pixel rgb(247, 158, 103) colored shadow looks like.

```
.shadow{ text-shadow: 4px 4px 2px rgb(247, 158, 103) }
```

Border

The CSS property to change the border of an element to RGB 247, 158, 103 is called "border". The border property can be set on classes, ids or directly on the HTML element.

This example shows the color as border, it can be applied via the CSS property "border" or "border-color".

```
.border, #border, table{ border:4px solid rgb(247, 158, 103) }
```

If only the border color should be changed use the property border-color.

```
.border{ border-color:rgb(247, 158, 103) }
```

If you want to add a box shadow in that color use:

Here you see how a box with a 4 pixel rgb(247, 158, 103) colored shadow looks like.

```
.boxshadow{ -moz-box-shadow:4px 4px 4px  
4px rgb(247, 158, 103); -webkit-box-  
shadow:4px 4px 4px 4px rgb(247, 158, 103);  
box-shadow:4px 4px 4px 4px rgb(247, 158,  
103) }
```

Background

The CSS property to change the background color of an element to RGB 247, 158, 103 is called "background". The background property can be set on classes, ids or directly on the HTML element.

```
.background, #background, body{  
background: rgb(247, 158, 103) }
```

If only the background color should be changed can be used:

```
.background{ background-color: rgb(247,  
158, 103) }
```

This example shows the color as background, it is applied via the CSS property "background".

To optimize and compress your CSS code, you can use our [online CSS compressor and optimizer](#) based on csstidy. If you want to create a linear or radial gradient as background or border, check our [CSS Gradient Generator](#).

Hey! You found this booklet interesting? Support Converting Colors with the new Membership Option!

The pro membership hides all ads, plus gives you double the colors in the color bucket, and more awesome pro features!

[Learn more, Memberships starting at \\$2.50/m!](#)

**Follow me
on Twitter!**

@ConvertingColor