

Converting Colors

RGB(248, 178, 162)

Have a look what the booklet for
RGB(248, 178, 162) contains.

RGB(248, 178, 162)	3
<i>Conversions</i>	4
<i>Details</i>	6
<i>Harmonies</i>	11
<i>Previews</i>	23
<i>Color Blindness Simulation</i>	26
<i>CSS Examples</i>	29

Color

RGB(248, 178, 162)

Conversions

Conversions Part 1

Format	Color
Hex	F8B2A2
RGB	248, 178, 162
RGB Percent	97%, 70%, 64%
CMY	0.0275, 0.3020, 0.3647
CMYK	0.00, 0.28, 0.35, 0.03
HSL	11°, 86%, 80%
HSV	11°, 35%, 97%
XYZ	61.1534, 54.4059, 41.4607
YIQ	197.1060, 46.8560, 9.8640

Conversions

Conversions Part 2

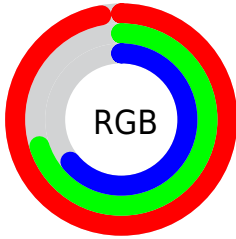
Format	Color
R _Y B	248, 182, 162
Decimal	16298658
CIE Lab	78.70, 23.47, 18.31
CIE LCh	79, 29.766, 37.960
Yxy	54.4059, 0.3895, 0.3465
Android (android.graphics.Color)	4294488738 (0xFFFF8B2A2)
YUV	197.1060, -17.3073, 44.6340
Hunter-Lab	73.7603, 18.9106, 18.3053

Details

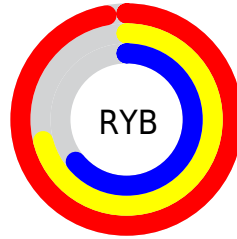
The RGB color **248, 178, 162** is a light color, and the websafe version is hex **FFCCCC**. A complement of this color would be **162, 232, 248**, and the grayscale version is **197, 197, 197**.

A 20% lighter version of the original color is **255, 234, 217**, and **190, 125, 110** is the 20% darker color. If you saturate the color by 10%, you get **248, 158, 137**, and if you desaturate by 10%, it is **248, 198, 187**.

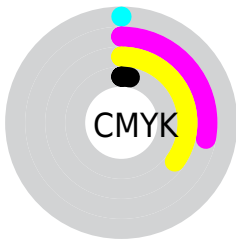
Distribution



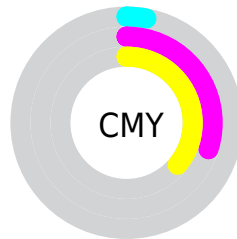
- Red (97%)
- Green (70%)
- Blue (64%)



- Red (97%)
- Yellow (71%)
- Blue (64%)



- Cyan (0%)
- Magenta (28%)
- Yellow (35%)
- Black (3%)



- Cyan (3%)
- Magenta (30%)
- Yellow (36%)

Brightness & Saturation Gradients

These gradients show how the RGB color 248, 178, 162 changes by changing the brightness by 10 percent. The first figure shows a shift by +10% for each color and the second figure -10%.

Similar to the brightness gradients but the following saturation gradients show a change of the RGB color 248, 178, 162 by changing the saturation by 10% instead.

 248, 178, 162


255, 255, 255

 255, 234, 217

 255, 255, 245

 248, 178, 162


 219, 151, 136

 190, 125, 110

 162, 100, 86

 134, 75, 63

 107, 52, 41

 81, 29, 20

 56, 6, 0

 32, 0, 1

 0, 0, 0

■ 248, 178, 162

■ 248, 178, 162

■ 248, 158, 137

■ 248, 198, 187

■ 248, 138, 112

■ 248, 218, 212

■ 248, 117, 88

■ 248, 239, 236

■ 248, 97, 63

■ 248, 255, 255

■ 248, 77, 38

■ 248, 57, 13

■ 248, 46, 0

Harmonies

Analogous

The Analogous color harmony consists of three colors that are next to each other on the color wheel.



250, 174, 188



248, 178, 162



233, 186, 144

Triad

The Triadic color harmony groups three colors that are evenly spaced from another and form a triangle on the color wheel.



248, 178, 162



145, 209, 173



171, 195, 249

Complementary

The Complementary color scheme is a pair of colors which are on the opposite of each other on the color wheel.



248, 178, 162



162, 232, 248

Split Complementary

Split-complementary colors differ from the complementary color scheme. The scheme consists of three colors, the original color and two neighbors of the complement color.



133, 203, 245



248, 178, 162



119, 210, 201

Square

The Square scheme is like the rectangle color scheme, but the four colors are evenly spaced on the color wheel.



248, 178, 162



177, 203, 150



111, 209, 228



208, 185, 238

Rectangle

The Rectangle color scheme consists of four colors that form a rectangle on the color wheel.



248, 178, 162



217, 192, 140



111, 209, 228



157, 198, 250

Sweetspot

The Sweet Spot groups the original color and five complimentary colors.



248, 178, 162



255, 234, 230



248, 162, 232



128, 115, 112



0, 0, 0



128, 128, 128

Same Dimension

The Same Dimension uses a secret algorithm to generate beautiful new colors.



248, 178, 162



255, 168, 148



248, 221, 162



125, 115, 112



189, 35, 0



61, 11, 0

Inverse Universe

The Inverse Universe completely reimagines the original color for something new.



162, 232, 248



148, 235, 255



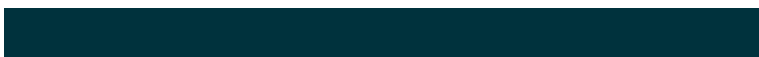
162, 189, 248



112, 123, 125



0, 154, 189



0, 50, 61

Previews

White Background



This preview shows how the RGB color 248, 178, 162 looks on a white background.

Color Contrast Check

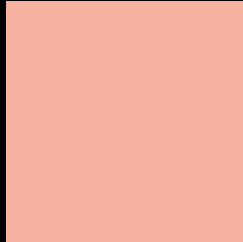
Large Text (above 18pt) WCAG AA × Fail

Any Text WCAG AA × Fail

Large Text (above 18pt) WCAG AAA × Fail

Any Text WCAG AAA × Fail

Black Background



This preview shows how the RGB color 248, 178, 162 looks on a black background.

Color Contrast Check

Large Text (above 18pt) WCAG AA ✓ Pass

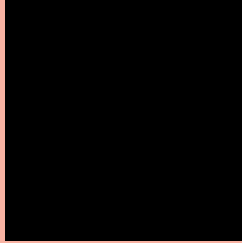
Any Text WCAG AA ✓ Pass

Large Text (above 18pt) WCAG AAA ✓ Pass

Any Text WCAG AAA ✓ Pass

If you want to check with other color combinations, try the [Color Contrast Checker](#).

RGB 248, 178, 162 Background



This preview shows how black text looks on a background with the RGB color 248, 178, 162.

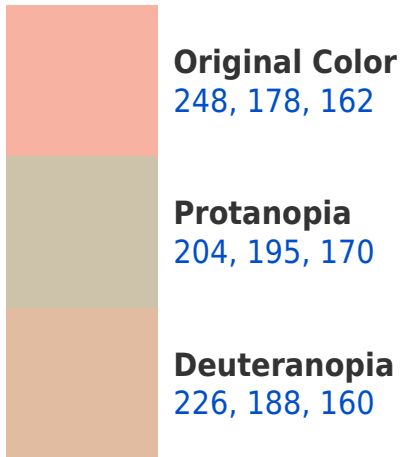


This preview shows how white text looks on a background with the RGB color 248, 178, 162.

Color Blindness Simulation

Color vision deficiency is a very complex topic, and I could not describe the different causes any better than Wikipedia does, so if you want to learn more, you should check out their [article about color blindness](#).

Dichromacy





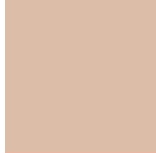
Tritanopia
251, 174, 188

Trichromacy



Original Color

248, 178, 162



Protanomaly

220, 189, 167



Deuteranomaly

234, 184, 161



Tritanomaly

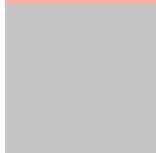
250, 175, 179

Monochromacy



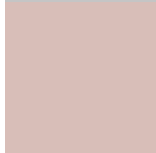
Original Color

248, 178, 162



Achromatopsia

197, 197, 197



Achromatomaly

216, 190, 184

CSS Examples

Text

The CSS property to change the color of the text to RGB 248, 178, 162 is called "color". The color property can be set on classes, ids or directly on the HTML element.

This example shows how text in the color rgb(248, 178, 162) looks like.

```
.text, #text, p{  
    color:rgb(248, 178, 162)  
}
```

If you want to add a text shadow in that color use the text-shadow property, you can generate a text shadow directly with our [CSS Text Shadow Generator](#).

Here you see how black text with a 4 pixel rgb(248, 178, 162) colored shadow looks like.

```
.shadow{ text-shadow: 4px 4px 2px rgb(248, 178, 162) }
```

Border

The CSS property to change the border of an element to RGB 248, 178, 162 is called "border". The border property can be set on classes, ids or directly on the HTML element.

This example shows the color as border, it can be applied via the CSS property "border" or "border-color".

```
.border, #border, table{ border:4px solid rgb(248, 178, 162) }
```

If only the border color should be changed use the property `border-color`.

```
.border{ border-color:rgb(248, 178, 162) }
```

If you want to add a box shadow in that color use:

Here you see how a box with a 4 pixel `rgb(248, 178, 162)` colored shadow looks like.

```
.boxshadow{ -moz-box-shadow:4px 4px 4px  
4px rgb(248, 178, 162); -webkit-box-  
shadow:4px 4px 4px 4px rgb(248, 178, 162);  
box-shadow:4px 4px 4px 4px rgb(248, 178,  
162) }
```

Background

The CSS property to change the background color of an element to RGB 248, 178, 162 is called "background". The background property can be set on classes, ids or directly on the HTML element.

```
.background, #background, body{  
background: rgb(248, 178, 162) }
```

If only the background color should be changed can be used:

```
.background{ background-color: rgb(248,  
178, 162) }
```

This example shows the color as background, it is applied via the CSS property "background".

To optimize and compress your CSS code, you can use our [online CSS compressor and optimizer](#) based on csstidy. If you want to create a linear or radial gradient as background or border, check our [CSS Gradient Generator](#).

Hey! You found this booklet interesting? Support Converting Colors with the new Membership Option!

The pro membership hides all ads, plus gives you double the colors in the color bucket, and more awesome pro features!

[Learn more, Memberships starting at \\$2.50/m!](#)

**Follow me
on Twitter!**

@ConvertingColor