

Converting Colors

RGB(250, 115, 137)

Have a look what the booklet for
RGB(250, 115, 137) contains.

RGB(250, 115, 137)	3
<i>Conversions</i>	4
<i>Details</i>	6
<i>Harmonies</i>	11
<i>Previews</i>	23
<i>Color Blindness Simulation</i>	26
<i>CSS Examples</i>	29

Color

RGB(250, 115, 137)

Conversions

Conversions Part 1

Format	Color
Hex	FA7389
RGB	250, 115, 137
RGB Percent	98%, 45%, 54%
CMY	0.0196, 0.5490, 0.4627
CMYK	0.00, 0.54, 0.45, 0.02
HSL	350°, 93%, 72%
HSV	350°, 54%, 98%
XYZ	50.0704, 34.3916, 27.6662
YIQ	157.8730, 73.3980, 35.4620

Conversions

Conversions Part 2

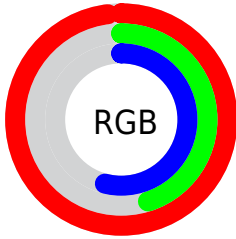
Format	Color
R _Y B	250, 115, 137
Decimal	16413577
CIE Lab	65.27, 53.51, 13.45
CIE LCh	65, 55.170, 14.109
Yxy	34.3916, 0.4465, 0.3067
Android (android.graphics.Color)	4294603657 (0xFFFA7389)
YUV	157.8730, -10.2904, 80.7954
Hunter-Lab	58.6444, 49.7753, 13.0803

Details

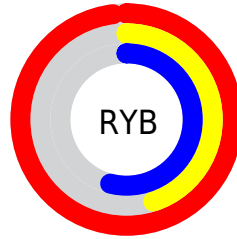
The RGB color **250, 115, 137** is a light color, and the websafe version is hex **FF6699**. A complement of this color would be **115, 250, 228**, and the grayscale version is **158, 158, 158**.

A 20% lighter version of the original color is **255, 171, 190**, and **189, 60, 87** is the 20% darker color. If you saturate the color by 10%, you get **250, 90, 116**, and if you desaturate by 10%, it is **250, 140, 158**.

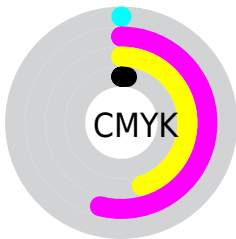
Distribution



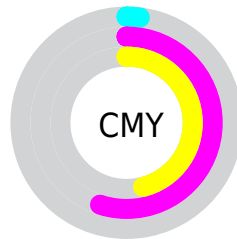
- Red (98%)
- Green (45%)
- Blue (54%)



- Red (98%)
- Yellow (45%)
- Blue (54%)



- Cyan (0%)
- Magenta (54%)
- Yellow (45%)
- Black (2%)



- Cyan (2%)
- Magenta (55%)
- Yellow (46%)

Brightness & Saturation Gradients

These gradients show how the RGB color 250, 115, 137 changes by changing the brightness by 10 percent. The first figure shows a shift by +10% for each color and the second figure -10%.

Similar to the brightness gradients but the following saturation gradients show a change of the RGB color 250, 115, 137 by changing the saturation by 10% instead.


 250, 115, 137

255, 255, 255

 255, 171, 190

 255, 199, 218

 255, 228, 246


 250, 115, 137

 219, 88, 112

 189, 60, 87

 159, 29, 64

 130, 0, 43

 101, 0, 23

 73, 0, 0

 45, 0, 1

 0, 0, 0

 250, 115, 137

 250, 115, 137

■ 250, 90, 116

■ 250, 140, 158

■ 250, 65, 95

■ 250, 165, 179

■ 250, 40, 74

■ 250, 190, 200

■ 250, 15, 53

■ 250, 215, 221

■ 250, 0, 41

■ 250, 240, 242

■ 250, 255, 255

Harmonies

Analogous

The Analogous color harmony consists of three colors that are next to each other on the color wheel.



235, 118, 187



250, 115, 137



239, 128, 92

Triad

The Triadic color harmony groups three colors that are evenly spaced from another and form a triangle on the color wheel.



250, 115, 137



108, 175, 84



0, 171, 253

Complementary

The Complementary color scheme is a pair of colors which are on the opposite of each other on the color wheel.



250, 115, 137



115, 250, 228

Split Complementary

Split-complementary colors differ from the complementary color scheme. The scheme consists of three colors, the original color and two neighbors of the complement color.



0, 180, 226



250, 115, 137



0, 181, 130

Square

The Square scheme is like the rectangle color scheme, but the four colors are evenly spaced on the color wheel.



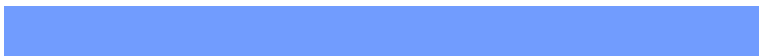
250, 115, 137



164, 163, 56



0, 183, 181



113, 156, 254

Rectangle

The Rectangle color scheme consists of four colors that form a rectangle on the color wheel.



250, 115, 137



220, 140, 69



0, 183, 181



0, 175, 247

Sweetspot

The Sweet Spot groups the original color and five complimentary colors.



250, 115, 137



255, 214, 221



228, 115, 250



128, 103, 107



0, 0, 0



128, 128, 128

Same Dimension

The Same Dimension uses a secret algorithm to generate beautiful new colors.



250, 115, 137



255, 89, 116



250, 160, 115



125, 112, 114



189, 0, 31



61, 0, 10

Inverse Universe

The Inverse Universe completely reimagines the original color for something new.



250, 115, 137



255, 89, 116



115, 205, 250



125, 112, 114



189, 0, 31



61, 0, 10

Previews

White Background



This preview shows how the RGB color 250, 115, 137 looks on a white background.

Color Contrast Check

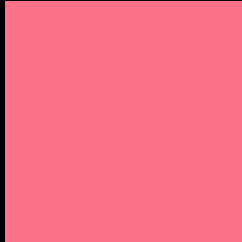
Large Text (above 18pt) WCAG AA × Fail

Any Text WCAG AA × Fail

Large Text (above 18pt) WCAG AAA × Fail

Any Text WCAG AAA × Fail

Black Background



This preview shows how the RGB color 250, 115, 137 looks on a black background.

Color Contrast Check

Large Text (above 18pt) WCAG AA ✓ Pass

Any Text WCAG AA ✓ Pass

Large Text (above 18pt) WCAG AAA ✓ Pass

Any Text WCAG AAA ✓ Pass

If you want to check with other color combinations, try the [Color Contrast Checker](#).

RGB 250, 115, 137 Background



This preview shows how black text looks on a background with the RGB color 250, 115, 137.

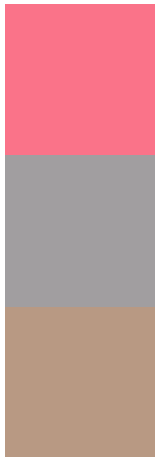


This preview shows how white text looks on a background with the RGB color 250, 115, 137.

Color Blindness Simulation

Color vision deficiency is a very complex topic, and I could not describe the different causes any better than Wikipedia does, so if you want to learn more, you should check out their [article about color blindness](#).

Dichromacy



Original Color
250, 115, 137

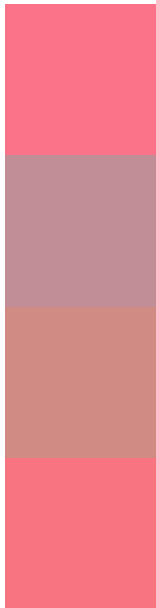
Protanopia
161, 158, 160

Deuteranopia
184, 153, 131



Tritanopia
249, 117, 125

Trichromacy



Original Color
250, 115, 137

Protanomaly
193, 142, 152

Deuteranomaly
208, 139, 133

Tritanomaly
249, 116, 129

Monochromacy



Original Color
250, 115, 137

Achromatopsia
158, 158, 158

Achromatomaly
191, 142, 150

CSS Examples

Text

The CSS property to change the color of the text to RGB 250, 115, 137 is called "color". The color property can be set on classes, ids or directly on the HTML element.

This example shows how text in the color rgb(250, 115, 137) looks like.

```
.text, #text, p{  
    color:rgb(250, 115, 137)  
}
```

If you want to add a text shadow in that color use the text-shadow property, you can generate a text shadow directly with our [CSS Text Shadow Generator](#).

Here you see how black text with a 4 pixel rgb(250, 115, 137) colored shadow looks like.

```
.shadow{ text-shadow: 4px 4px 2px rgb(250, 115, 137) }
```

Border

The CSS property to change the border of an element to RGB 250, 115, 137 is called "border". The border property can be set on classes, ids or directly on the HTML element.

This example shows the color as border, it can be applied via the CSS property "border" or "border-color".

```
.border, #border, table{ border:4px solid rgb(250, 115, 137) }
```

If only the border color should be changed use the property `border-color`.

```
.border{ border-color:rgb(250, 115, 137) }
```

If you want to add a box shadow in that color use:

Here you see how a box with a 4 pixel `rgb(250, 115, 137)` colored shadow looks like.

```
.boxshadow{ -moz-box-shadow:4px 4px 4px  
4px rgb(250, 115, 137); -webkit-box-  
shadow:4px 4px 4px 4px rgb(250, 115, 137);  
box-shadow:4px 4px 4px 4px rgb(250, 115,  
137) }
```

Background

The CSS property to change the background color of an element to RGB 250, 115, 137 is called "background". The background property can be set on classes, ids or directly on the HTML element.

```
.background, #background, body{  
background: rgb(250, 115, 137) }
```

If only the background color should be changed can be used:

```
.background{ background-color: rgb(250,  
115, 137) }
```

This example shows the color as background, it is applied via the CSS property "background".

To optimize and compress your CSS code, you can use our [online CSS compressor and optimizer](#) based on csstidy. If you want to create a linear or radial gradient as background or border, check our [CSS Gradient Generator](#).

Hey! You found this booklet interesting? Support Converting Colors with the new Membership Option!

The pro membership hides all ads, plus gives you double the colors in the color bucket, and more awesome pro features!

[Learn more, Memberships starting at \\$2.50/m!](#)

**Follow me
on Twitter!**

@ConvertingColor