

Converting Colors

RGB(252, 178, 151)

Have a look what the booklet for
RGB(252, 178, 151) contains.

RGB(252, 178, 151)	3
<i>Conversions</i>	4
<i>Details</i>	6
<i>Harmonies</i>	11
<i>Previews</i>	23
<i>Color Blindness Simulation</i>	26
<i>CSS Examples</i>	29

Color

RGB(252, 178, 151)

Conversions

Conversions Part 1

Format	Color
Hex	FCB297
RGB	252, 178, 151
RGB Percent	99%, 70%, 59%
CMY	0.0118, 0.3020, 0.4078
CMYK	0.00, 0.29, 0.40, 0.01
HSL	16°, 94%, 79%
HSV	16°, 40%, 99%
XYZ	61.6512, 54.7706, 36.6006
YIQ	197.0480, 52.7710, 7.2910

Conversions

Conversions Part 2

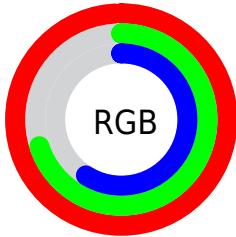
Format	Color
RYB	252, 188, 151
Decimal	16560791
CIELab	78.91, 23.73, 24.57
CIELCh	79, 34.160, 46.006
Yxy	54.7706, 0.4029, 0.3579
Android (android.graphics.Color)	4294750871 (0xFFFCB297)
YUV	197.0480, -22.7017, 48.1929
Hunter-Lab	74.0072, 19.1857, 22.4829

Details

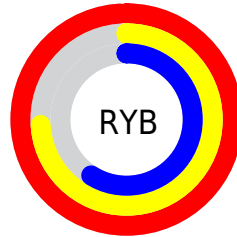
The RGB color **252, 178, 151** is a light color, and the websafe version is hex **FFCC99**. A complement of this color would be **151, 225, 252**, and the grayscale version is **197, 197, 197**.

A 20% lighter version of the original color is **255, 234, 205**, and **193, 125, 100** is the 20% darker color. If you saturate the color by 10%, you get **252, 160, 126**, and if you desaturate by 10%, it is **252, 196, 176**.

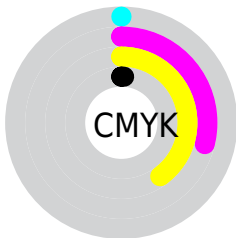
Distribution



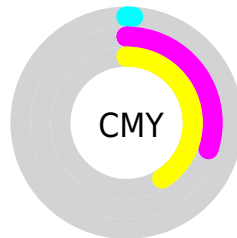
- Red (99%)
- Green (70%)
- Blue (59%)



- Red (99%)
- Yellow (74%)
- Blue (59%)



- Cyan (0%)
- Magenta (29%)
- Yellow (40%)
- Black (1%)





- Cyan (1%)
- Magenta (30%)
- Yellow (41%)

Brightness & Saturation Gradients


These gradients show how the RGB color 252, 178, 151 changes by changing the brightness by 10 percent. The first figure shows a shift by +10% for each color and the second figure -10%.

Similar to the brightness gradients but the following saturation gradients show a change of the RGB color 252, 178, 151 by changing the saturation by 10% instead.

 252, 178, 151

 252, 178, 151

255, 255, 255

 222, 151, 125

 255, 234, 205

 193, 125, 100

 255, 255, 234

 165, 100, 76

 137, 75, 53

 109, 52, 31

 83, 29, 9

 57, 7, 0

 33, 0, 1

 0, 0, 0

■ 252, 178, 151

■ 252, 178, 151

■ 252, 160, 126

■ 252, 196, 176

■ 252, 141, 101

■ 252, 215, 201

■ 252, 123, 75

■ 252, 233, 227

■ 252, 104, 50

■ 252, 252, 252

■ 252, 86, 25

■ 252, 255, 255

■ 252, 67, 0

Harmonies

Analogous

The Analogous color harmony consists of three colors that are next to each other on the color wheel.



255, 172, 179



252, 178, 151



231, 188, 134

Triad

The Triadic color harmony groups three colors that are evenly spaced from another and form a triangle on the color wheel.



252, 178, 151



127, 212, 179



179, 192, 255

Complementary

The Complementary color scheme is a pair of colors which are on the opposite of each other on the color wheel.



252, 178, 151



151, 225, 252

Split Complementary

Split-complementary colors differ from the complementary color scheme. The scheme consists of three colors, the original color and two neighbors of the complement color.



131, 203, 255



252, 178, 151



97, 213, 212

Square

The Square scheme is like the rectangle color scheme, but the four colors are evenly spaced on the color wheel.



252, 178, 151



164, 207, 150



96, 210, 240



221, 181, 240

Rectangle

The Rectangle color scheme consists of four colors that form a rectangle on the color wheel.



252, 178, 151



211, 195, 132



96, 210, 240



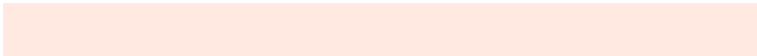
163, 196, 255

Sweetspot

The Sweet Spot groups the original color and five complimentary colors.



252, 178, 151



255, 233, 224



252, 151, 225



128, 114, 110



0, 0, 0



128, 128, 128

Same Dimension

The Same Dimension uses a secret algorithm to generate beautiful new colors.



252, 178, 151



255, 165, 133



252, 228, 151



125, 116, 112



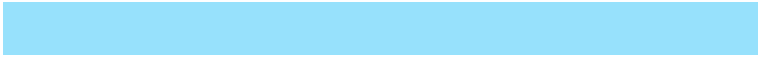
189, 50, 0



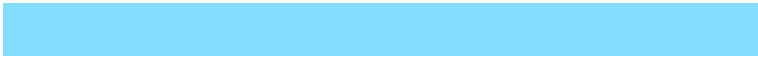
61, 16, 0

Inverse Universe

The Inverse Universe completely reimagines the original color for something new.



151, 225, 252



133, 222, 255



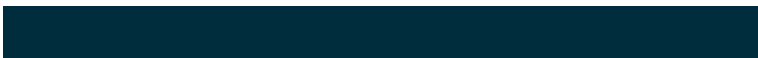
151, 175, 252



112, 122, 125



0, 138, 189



0, 45, 61

Previews

White Background



This preview shows how the RGB color 252, 178, 151 looks on a white background.

Color Contrast Check

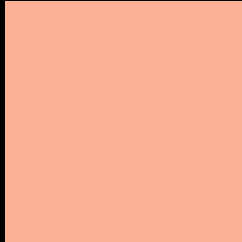
Large Text (above 18pt) WCAG AA × Fail

Any Text WCAG AA × Fail

Large Text (above 18pt) WCAG AAA × Fail

Any Text WCAG AAA × Fail

Black Background



This preview shows how the RGB color 252, 178, 151 looks on a black background.

Color Contrast Check

Large Text (above 18pt) WCAG AA ✓ Pass

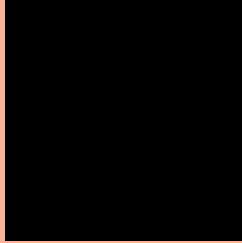
Any Text WCAG AA ✓ Pass

Large Text (above 18pt) WCAG AAA ✓ Pass

Any Text WCAG AAA ✓ Pass

If you want to check with other color combinations, try the [Color Contrast Checker](#).

RGB 252, 178, 151 Background



This preview shows how black text looks on a background with the RGB color 252, 178, 151.

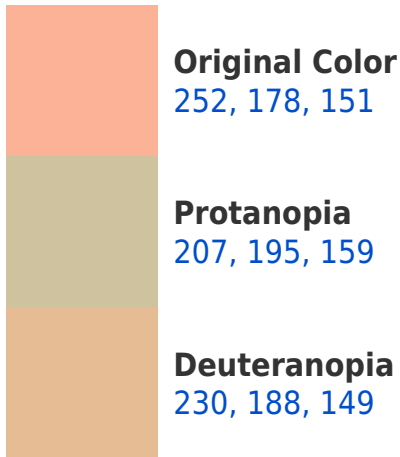



This preview shows how white text looks on a background with the RGB color 252, 178, 151.

Color Blindness Simulation

Color vision deficiency is a very complex topic, and I could not describe the different causes any better than Wikipedia does, so if you want to learn more, you should check out their [article about color blindness](#).

Dichromacy





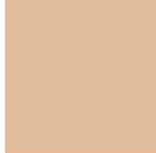
Tritanopia
255, 173, 186

Trichromacy



Original Color

252, 178, 151



Protanomaly

223, 189, 156



Deuteranomaly

238, 184, 150



Tritanomaly

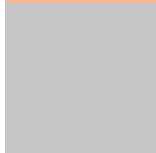
254, 175, 173

Monochromacy



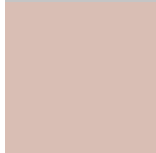
Original Color

252, 178, 151



Achromatopsia

197, 197, 197



Achromatomaly

217, 190, 180

CSS Examples

Text

The CSS property to change the color of the text to RGB 252, 178, 151 is called "color". The color property can be set on classes, ids or directly on the HTML element.

This example shows how text in the color rgb(252, 178, 151) looks like.

```
.text, #text, p{  
    color:rgb(252, 178, 151)  
}
```

If you want to add a text shadow in that color use the text-shadow property, you can generate a text shadow directly with our [CSS Text Shadow Generator](#).

Here you see how black text with a 4 pixel rgb(252, 178, 151) colored shadow looks like.

```
.shadow{ text-shadow: 4px 4px 2px rgb(252, 178, 151) }
```

Border

The CSS property to change the border of an element to RGB 252, 178, 151 is called "border". The border property can be set on classes, ids or directly on the HTML element.

This example shows the color as border, it can be applied via the CSS property "border" or "border-color".

```
.border, #border, table{ border:4px solid rgb(252, 178, 151) }
```

If only the border color should be changed use the property `border-color`.

```
.border{ border-color:rgb(252, 178, 151) }
```

If you want to add a box shadow in that color use:

Here you see how a box with a 4 pixel `rgb(252, 178, 151)` colored shadow looks like.

```
.boxshadow{ -moz-box-shadow:4px 4px 4px  
4px rgb(252, 178, 151); -webkit-box-  
shadow:4px 4px 4px 4px rgb(252, 178, 151);  
box-shadow:4px 4px 4px 4px rgb(252, 178,  
151) }
```

Background

The CSS property to change the background color of an element to RGB 252, 178, 151 is called "background". The background property can be set on classes, ids or directly on the HTML element.

```
.background, #background, body{  
background: rgb(252, 178, 151) }
```

If only the background color should be changed can be used:

```
.background{ background-color: rgb(252,  
178, 151) }
```

This example shows the color as background, it is applied via the CSS property "background".

To optimize and compress your CSS code, you can use our [online CSS compressor and optimizer](#) based on csstidy. If you want to create a linear or radial gradient as background or border, check our [CSS Gradient Generator](#).

Hey! You found this booklet interesting? Support Converting Colors with the new Membership Option!

The pro membership hides all ads, plus gives you double the colors in the color bucket, and more awesome pro features!

[Learn more, Memberships starting at \\$2.50/m!](#)

**Follow me
on Twitter!**

@ConvertingColor