

Converting Colors

RGB(252, 183, 172)

Have a look what the booklet for
RGB(252, 183, 172) contains.

RGB(252, 183, 172)	3
<i>Conversions</i>	4
<i>Details</i>	6
<i>Harmonies</i>	11
<i>Previews</i>	23
<i>Color Blindness Simulation</i>	26
<i>CSS Examples</i>	29

Color

RGB(252, 183, 172)

Conversions

Conversions Part 1

Format	Color
Hex	FCB7AC
RGB	252, 183, 172
RGB Percent	99%, 72%, 67%
CMY	0.0118, 0.2824, 0.3255
CMYK	0.00, 0.27, 0.32, 0.01
HSL	8°, 93%, 83%
HSV	8°, 32%, 99%
XYZ	64.5248, 57.5410, 46.7354
YIQ	202.3770, 44.6550, 11.2070

Conversions

Conversions Part 2

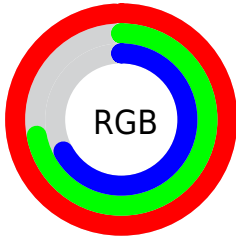
Format	Color
R _Y B	252, 185, 172
Decimal	16562092
CIE Lab	80.48, 23.57, 15.48
CIE LCh	80, 28.197, 33.307
Yxy	57.5410, 0.3823, 0.3409
Android (android.graphics.Color)	4294752172 (0xFFFCB7AC)
YUV	202.3770, -14.9759, 43.5194
Hunter-Lab	75.8558, 19.0889, 16.5699

Details

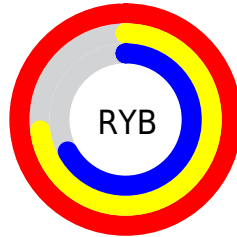
The RGB color **252, 183, 172** is a light color, and the websafe version is hex **FFCCCC**. A complement of this color would be **172, 241, 252**, and the grayscale version is **202, 202, 202**.

A 20% lighter version of the original color is **255, 239, 227**, and **194, 130, 120** is the 20% darker color. If you saturate the color by 10%, you get **252, 161, 147**, and if you desaturate by 10%, it is **252, 205, 197**.

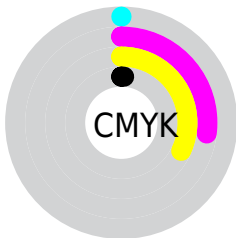
Distribution



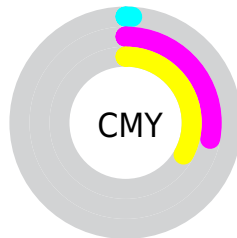
- Red (99%)
- Green (72%)
- Blue (67%)



- Red (99%)
- Yellow (73%)
- Blue (67%)



- Cyan (0%)
- Magenta (27%)
- Yellow (32%)
- Black (1%)




- Cyan (1%)
- Magenta (28%)
- Yellow (33%)

Brightness & Saturation Gradients


These gradients show how the RGB color 252, 183, 172 changes by changing the brightness by 10 percent. The first figure shows a shift by +10% for each color and the second figure -10%.


Similar to the brightness gradients but the following saturation gradients show a change of the RGB color 252, 183, 172 by changing the saturation by 10% instead.

 252, 183, 172

255, 255, 255

 255, 239, 227


 252, 183, 172

 223, 156, 145

 194, 130, 120

 166, 104, 95

 138, 80, 71

 111, 56, 49

 85, 33, 28

 60, 10, 2

 38, 0, 1

 0, 0, 0

■ 252, 183, 172

■ 252, 183, 172

■ 252, 161, 147

■ 252, 205, 197

■ 252, 140, 122

■ 252, 226, 222

■ 252, 118, 96

■ 252, 248, 248

■ 252, 96, 71

■ 252, 255, 255

■ 252, 74, 46

■ 252, 53, 21

■ 252, 35, 0

Harmonies

Analogous

The Analogous color harmony consists of three colors that are next to each other on the color wheel.



252, 181, 198



252, 183, 172



239, 190, 153

Triad

The Triadic color harmony groups three colors that are evenly spaced from another and form a triangle on the color wheel.



252, 183, 172



157, 212, 175



171, 201, 252

Complementary

The Complementary color scheme is a pair of colors which are on the opposite of each other on the color wheel.



252, 183, 172



172, 241, 252

Split Complementary

Split-complementary colors differ from the complementary color scheme. The scheme consists of three colors, the original color and two neighbors of the complement color.



138, 209, 246



252, 183, 172



132, 215, 202

Square

The Square scheme is like the rectangle color scheme, but the four colors are evenly spaced on the color wheel.



252, 183, 172



187, 207, 155



122, 213, 228



208, 192, 244

Rectangle

The Rectangle color scheme consists of four colors that form a rectangle on the color wheel.



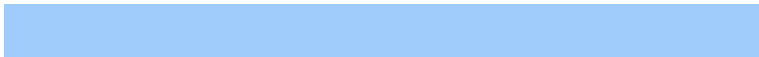
252, 183, 172



225, 196, 148



122, 213, 228



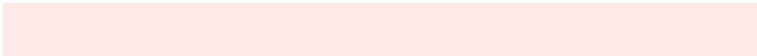
159, 204, 251

Sweetspot

The Sweet Spot groups the original color and five complimentary colors.



252, 183, 172



255, 233, 230



252, 172, 241



128, 114, 112



0, 0, 0



128, 128, 128

Same Dimension

The Same Dimension uses a secret algorithm to generate beautiful new colors.



252, 183, 172



255, 171, 158



252, 223, 172



125, 114, 112



189, 26, 0



61, 8, 0

Inverse Universe

The Inverse Universe completely reimagines the original color for something new.



172, 241, 252



158, 242, 255



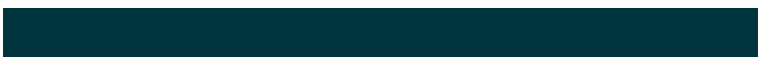
172, 201, 252



112, 123, 125



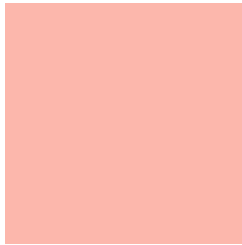
0, 163, 189



0, 53, 61

Previews

White Background



This preview shows how the RGB color 252, 183, 172 looks on a white background.

Color Contrast Check

Large Text (above 18pt) WCAG AA × Fail

Any Text WCAG AA × Fail

Large Text (above 18pt) WCAG AAA × Fail

Any Text WCAG AAA × Fail

Black Background



This preview shows how the RGB color 252, 183, 172 looks on a black background.

Color Contrast Check

Large Text (above 18pt) WCAG AA ✓ Pass

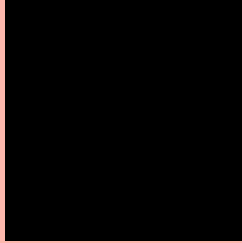
Any Text WCAG AA ✓ Pass

Large Text (above 18pt) WCAG AAA ✓ Pass

Any Text WCAG AAA ✓ Pass

If you want to check with other color combinations, try the [Color Contrast Checker](#).

RGB 252, 183, 172 Background



This preview shows how black text looks on a background with the RGB color 252, 183, 172.

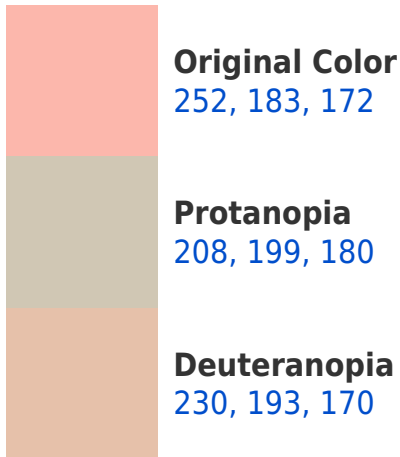



This preview shows how white text looks on a background with the RGB color 252, 183, 172.

Color Blindness Simulation

Color vision deficiency is a very complex topic, and I could not describe the different causes any better than Wikipedia does, so if you want to learn more, you should check out their [article about color blindness](#).

Dichromacy





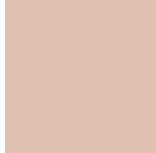
Tritanopia
254, 180, 194

Trichromacy



Original Color

252, 183, 172



Protanomaly

224, 193, 177



Deuteranomaly

238, 189, 171



Tritanomaly

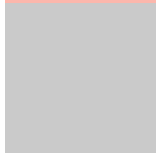
253, 181, 186

Monochromacy



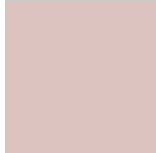
Original Color

252, 183, 172



Achromatopsia

202, 202, 202



Achromatomaly

220, 195, 191

CSS Examples

Text

The CSS property to change the color of the text to RGB 252, 183, 172 is called "color". The color property can be set on classes, ids or directly on the HTML element.

This example shows how text in the color `rgb(252, 183, 172)` looks like.

```
.text, #text, p{  
    color:rgb(252, 183, 172)  
}
```

If you want to add a text shadow in that color use the text-shadow property, you can generate a text shadow directly with our [CSS Text Shadow Generator](#).

Here you see how black text with a 4 pixel rgb(252, 183, 172) colored shadow looks like.

```
.shadow{ text-shadow: 4px 4px 2px rgb(252, 183, 172) }
```

Border

The CSS property to change the border of an element to RGB 252, 183, 172 is called "border". The border property can be set on classes, ids or directly on the HTML element.

This example shows the color as border, it can be applied via the CSS property "border" or "border-color".

```
.border, #border, table{ border:4px solid rgb(252, 183, 172) }
```

If only the border color should be changed use the property `border-color`.

```
.border{ border-color:rgb(252, 183, 172) }
```

If you want to add a box shadow in that color use:

Here you see how a box with a 4 pixel `rgb(252, 183, 172)` colored shadow looks like.

```
.boxshadow{ -moz-box-shadow:4px 4px 4px  
4px rgb(252, 183, 172); -webkit-box-  
shadow:4px 4px 4px 4px rgb(252, 183, 172);  
box-shadow:4px 4px 4px 4px rgb(252, 183,  
172) }
```

Background

The CSS property to change the background color of an element to RGB 252, 183, 172 is called "background". The background property can be set on classes, ids or directly on the HTML element.

```
.background, #background, body{  
background: rgb(252, 183, 172) }
```

If only the background color should be changed can be used:

```
.background{ background-color: rgb(252,  
183, 172) }
```

This example shows the color as background, it is applied via the CSS property "background".

To optimize and compress your CSS code, you can use our [online CSS compressor and optimizer](#) based on csstidy. If you want to create a linear or radial gradient as background or border, check our [CSS Gradient Generator](#).

Hey! You found this booklet interesting? Support Converting Colors with the new Membership Option!

The pro membership hides all ads, plus gives you double the colors in the color bucket, and more awesome pro features!

[Learn more, Memberships starting at \\$2.50/m!](#)

**Follow me
on Twitter!**

@ConvertingColor