

Converting Colors

RGB(252, 56, 125)

Have a look what the booklet for
RGB(252, 56, 125) contains.

RGB(252, 56, 125)	3
<i>Conversions</i>	4
<i>Details</i>	6
<i>Harmonies</i>	11
<i>Previews</i>	23
<i>Color Blindness Simulation</i>	26
<i>CSS Examples</i>	29

Color

RGB(252, 56, 125)

Conversions

Conversions Part 1

Format	Color
Hex	FC387D
RGB	252, 56, 125
RGB Percent	99%, 22%, 49%
CMY	0.0118, 0.7804, 0.5098
CMYK	0.00, 0.78, 0.50, 0.01
HSL	339°, 97%, 60%
HSV	339°, 78%, 99%
XYZ	45.2607, 25.0045, 21.8429
YIQ	122.4700, 94.6670, 63.0110

Conversions

Conversions Part 2

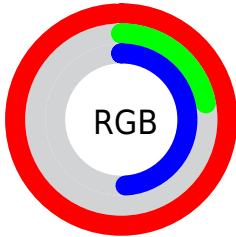
Format	Color
R_YB	252, 56, 125
Decimal	16529533
CIE _{Lab}	57.08, 75.45, 8.92
CIE _{LCh}	57, 75.976, 6.743
Yxy	25.0045, 0.4914, 0.2715
Android (android.graphics.Color)	4294719613 (0xFFFC387D)
YUV	122.4700, 1.2473, 113.5978
Hunter-Lab	50.0045, 74.0586, 9.1042

Details

The RGB color **252, 56, 125** is a dark color, and the websafe version is hex **FF0066**. The color can be described as middle washed rose. A complement of this color would be **56, 252, 183**, and the grayscale version is **122, 122, 122**.

A 20% lighter version of the original color is **255, 121, 177**, and **189, 0, 77** is the 20% darker color. If you saturate the color by 10%, you get **252, 31, 109**, and if you desaturate by 10%, it is **252, 81, 141**.

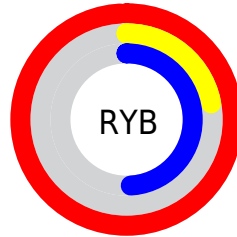
Distribution



Red (99%)

Green (22%)

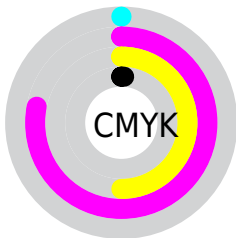
Blue (49%)



Red (99%)

Yellow (22%)

Blue (49%)

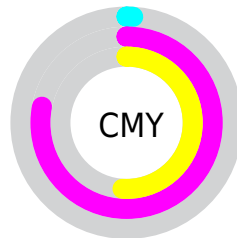


Cyan (0%)

Magenta (78%)

Yellow (50%)

Black (1%)



Cyan (1%)

Magenta (78%)

Yellow (51%)

Brightness & Saturation Gradients

These gradients show how the RGB color 252, 56, 125 changes by changing the brightness by 10 percent. The first figure shows a shift by +10% for each color and the second figure -10%.

Similar to the brightness gradients but the following saturation gradients show a change of the RGB color 252, 56, 125 by changing the saturation by 10% instead.



252, 56, 125



252, 56, 125

255, 255, 255



220, 0, 100



255, 121, 177



189, 0, 77



255, 151, 205



158, 0, 54



255, 181, 233



127, 0, 34



255, 211, 255



97, 0, 10



255, 241, 255



67, 0, 3



34, 0, 1



0, 0, 0



252, 56, 125



252, 56, 125

■ 252, 31, 109

■ 252, 81, 141

■ 252, 6, 92

■ 252, 106, 158

■ 252, 0, 89

■ 252, 132, 174

■ 252, 157, 190

■ 252, 182, 207

■ 252, 207, 223

■ 252, 232, 239

■ 252, 255, 255

Harmonies

Analogous

The Analogous color harmony consists of three colors that are next to each other on the color wheel.



226, 75, 191



252, 56, 125



242, 80, 61

Triad

The Triadic color harmony groups three colors that are evenly spaced from another and form a triangle on the color wheel.



252, 56, 125



80, 155, 0



0, 158, 255

Complementary

The Complementary color scheme is a pair of colors which are on the opposite of each other on the color wheel.



252, 56, 125



56, 252, 183

Split Complementary

Split-complementary colors differ from the complementary color scheme. The scheme consists of three colors, the original color and two neighbors of the complement color.



0, 165, 215



252, 56, 125



0, 163, 81

Square

The Square scheme is like the rectangle color scheme, but the four colors are evenly spaced on the color wheel.



252, 56, 125



152, 139, 0



0, 166, 151



0, 141, 255

Rectangle

The Rectangle color scheme consists of four colors that form a rectangle on the color wheel.



252, 56, 125



220, 103, 11



0, 166, 151



0, 161, 248

Sweetspot

The Sweet Spot groups the original color and five complimentary colors.



252, 56, 125



255, 196, 217



180, 56, 252



128, 92, 104



0, 0, 0



128, 128, 128

Same Dimension

The Same Dimension uses a secret algorithm to generate beautiful new colors.



252, 56, 125



255, 18, 101



252, 82, 56



125, 112, 117



189, 0, 66



61, 0, 22

Inverse Universe

The Inverse Universe completely reimagines the original color for something new.



252, 56, 125



255, 18, 101



56, 226, 252



125, 112, 117



189, 0, 66



61, 0, 22

Previews

White Background



This preview shows how the RGB color 252, 56, 125 looks on a white background.

Color Contrast Check

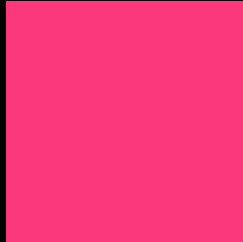
Large Text (above 18pt) WCAG AA ✓ Pass

Any Text WCAG AA ✗ Fail

Large Text (above 18pt) WCAG AAA ✗ Fail

Any Text WCAG AAA ✗ Fail

Black Background



This preview shows how the RGB color 252, 56, 125 looks on a black background.

Color Contrast Check

Large Text (above 18pt) WCAG AA ✓ Pass

Any Text WCAG AA ✓ Pass

Large Text (above 18pt) WCAG AAA ✓ Pass

Any Text WCAG AAA × Fail

If you want to check with other color combinations, try the [Color Contrast Checker](#).

RGB 252, 56, 125 Background



This preview shows how black text looks on a background with the RGB color 252, 56, 125.

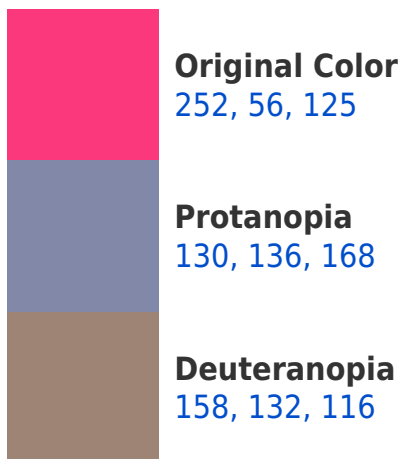


This preview shows how white text looks on a background with the RGB color 252, 56, 125.

Color Blindness Simulation

Color vision deficiency is a very complex topic, and I could not describe the different causes any better than Wikipedia does, so if you want to learn more, you should check out their [article about color blindness](#).

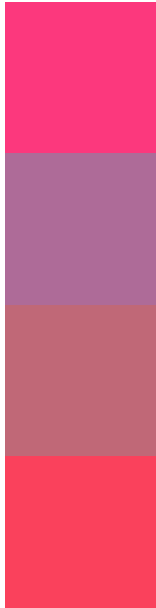
Dichromacy





Tritanopia
249, 70, 73

Trichromacy



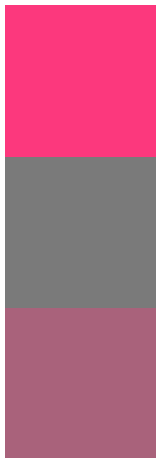
Original Color
252, 56, 125

Protanomaly
174, 107, 152

Deuteranomaly
192, 104, 119

Tritanomaly
250, 65, 92

Monochromacy



Original Color
252, 56, 125

Achromatopsia
122, 122, 122

Achromatomaly
169, 98, 123

CSS Examples

Text

The CSS property to change the color of the text to RGB 252, 56, 125 is called "color". The color property can be set on classes, ids or directly on the HTML element.

This example shows how text in the color rgb(252, 56, 125) looks like.

```
.text, #text, p{  
    color:rgb(252, 56, 125)  
}
```

If you want to add a text shadow in that color use the text-shadow property, you can generate a text shadow directly with our [CSS Text Shadow Generator](#).

Here you see how black text with a 4 pixel rgb(252, 56, 125) colored shadow looks like.

```
.shadow{ text-shadow: 4px 4px 2px rgb(252, 56, 125) }
```

Border

The CSS property to change the border of an element to RGB 252, 56, 125 is called "border". The border property can be set on classes, ids or directly on the HTML element.

This example shows the color as border, it can be applied via the CSS property "border" or "border-color".

```
.border, #border, table{ border:4px solid rgb(252, 56, 125) }
```

If only the border color should be changed use the property border-color.

```
.border{ border-color:rgb(252, 56, 125) }
```

If you want to add a box shadow in that color use:

Here you see how a box with a 4 pixel rgb(252, 56, 125) colored shadow looks like.

```
.boxshadow{ -moz-box-shadow:4px 4px 4px  
4px rgb(252, 56, 125); -webkit-box-  
shadow:4px 4px 4px 4px rgb(252, 56, 125);  
box-shadow:4px 4px 4px 4px rgb(252, 56,  
125) }
```

Background

The CSS property to change the background color of an element to RGB 252, 56, 125 is called "background". The background property can be set on classes, ids or directly on the HTML element.

```
.background, #background, body{  
background: rgb(252, 56, 125) }
```

If only the background color should be changed can be used:

```
.background{ background-color: rgb(252, 56,  
125) }
```

This example shows the color as background, it is applied via the CSS property "background".

To optimize and compress your CSS code, you can use our [online CSS compressor and optimizer](#) based on csstidy. If you want to create a linear or radial gradient as background or border, check our [CSS Gradient Generator](#).

Hey! You found this booklet interesting? Support Converting Colors with the new Membership Option!

The pro membership hides all ads, plus gives you double the colors in the color bucket, and more awesome pro features!

[Learn more, Memberships starting at \\$2.50/m!](#)

**Follow me
on Twitter!**

@ConvertingColor