

Converting Colors

RGB(253, 143, 104)

Have a look what the booklet for
RGB(253, 143, 104) contains.

RGB(253, 143, 104)	3
<i>Conversions</i>	4
<i>Details</i>	6
<i>Harmonies</i>	11
<i>Previews</i>	23
<i>Color Blindness Simulation</i>	26
<i>CSS Examples</i>	29

Color

RGB(253, 143, 104)

Conversions

Conversions Part 1

Format	Color
Hex	FD8F68
RGB	253, 143, 104
RGB Percent	99%, 56%, 41%
CMY	0.0078, 0.4392, 0.5922
CMYK	0.00, 0.43, 0.59, 0.01
HSL	16°, 97%, 70%
HSV	16°, 59%, 99%
XYZ	52.8292, 41.5270, 18.3278
YIQ	171.4440, 78.0790, 11.1910

Conversions

Conversions Part 2

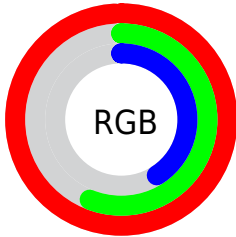
Format	Color
R _Y B	253, 157, 104
Decimal	16617320
CIE Lab	70.54, 38.07, 38.78
CIE LCh	71, 54.346, 45.534
Yxy	41.5270, 0.4688, 0.3685
Android (android.graphics.Color)	4294807400 (0xFFFD8F68)
YUV	171.4440, -33.2499, 71.5246
Hunter-Lab	64.4415, 33.5618, 28.2463

Details

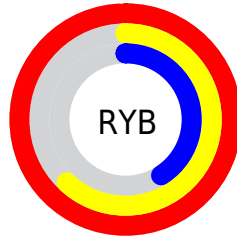
The RGB color **253, 143, 104** is a light color, and the websafe version is hex **FF9966**. A complement of this color would be **104, 214, 253**, and the grayscale version is **172, 172, 172**.

A 20% lighter version of the original color is **255, 198, 156**, and **192, 91, 56** is the 20% darker color. If you saturate the color by 10%, you get **253, 124, 79**, and if you desaturate by 10%, it is **253, 162, 129**.

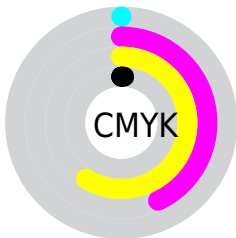
Distribution



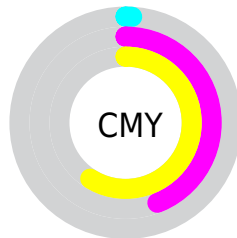
- Red (99%)
- Green (56%)
- Blue (41%)



- Red (99%)
- Yellow (62%)
- Blue (41%)



- Cyan (0%)
- Magenta (43%)
- Yellow (59%)
- Black (1%)



- Cyan (1%)
- Magenta (44%)
- Yellow (59%)

Brightness & Saturation Gradients

These gradients show how the RGB color 253, 143, 104 changes by changing the brightness by 10 percent. The first figure shows a shift by +10% for each color and the second figure -10%.

Similar to the brightness gradients but the following saturation gradients show a change of the RGB color 253, 143, 104 by changing the saturation by 10% instead.

 253, 143, 104

 253, 143, 104

255, 255, 255

 222, 117, 79

 255, 198, 156

 192, 91, 56

 255, 226, 183

 162, 65, 33

 255, 255, 211

 132, 40, 9

 255, 255, 239

 103, 12, 0

 74, 0, 0

 50, 0, 1

 0, 0, 0

 253, 143, 104

 253, 143, 104

■ 253, 124, 79

■ 253, 162, 129

■ 253, 106, 53

■ 253, 180, 155

■ 253, 87, 28

■ 253, 199, 180

■ 253, 68, 3

■ 253, 218, 205

■ 253, 66, 0

■ 253, 236, 231

253, 255, 255

Harmonies

Analogous

The Analogous color harmony consists of three colors that are next to each other on the color wheel.



255, 131, 149



253, 143, 104



221, 161, 74

Triad

The Triadic color harmony groups three colors that are evenly spaced from another and form a triangle on the color wheel.



253, 143, 104



9, 196, 146



135, 169, 255

Complementary

The Complementary color scheme is a pair of colors which are on the opposite of each other on the color wheel.



253, 143, 104



104, 214, 253

Split Complementary

Split-complementary colors differ from the complementary color scheme. The scheme consists of three colors, the original color and two neighbors of the complement color.



0, 185, 255



253, 143, 104



0, 197, 197

Square

The Square scheme is like the rectangle color scheme, but the four colors are evenly spaced on the color wheel.



253, 143, 104



120, 189, 100



0, 194, 242



209, 149, 242

Rectangle

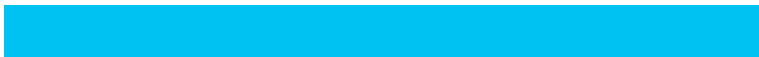
The Rectangle color scheme consists of four colors that form a rectangle on the color wheel.



253, 143, 104



192, 173, 69



0, 194, 242



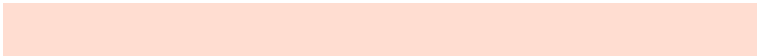
99, 175, 255

Sweetspot

The Sweet Spot groups the original color and five complimentary colors.



253, 143, 104



255, 221, 209



253, 104, 216



128, 107, 99



0, 0, 0



128, 128, 128

Same Dimension

The Same Dimension uses a secret algorithm to generate beautiful new colors.



253, 143, 104



255, 121, 74



253, 216, 104



128, 118, 115



191, 50, 0



64, 17, 0

Inverse Universe

The Inverse Universe completely reimagines the original color for something new.



104, 214, 253



74, 208, 255



104, 141, 253



115, 124, 128



0, 141, 191



0, 47, 64

Previews

White Background



This preview shows how the RGB color 253, 143, 104 looks on a white background.

Color Contrast Check

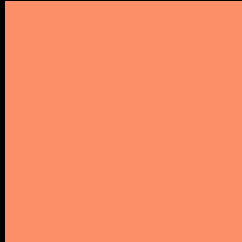
Large Text (above 18pt) WCAG AA × Fail

Any Text WCAG AA × Fail

Large Text (above 18pt) WCAG AAA × Fail

Any Text WCAG AAA × Fail

Black Background



This preview shows how the RGB color 253, 143, 104 looks on a black background.

Color Contrast Check

Large Text (above 18pt) WCAG AA ✓ Pass

Any Text WCAG AA ✓ Pass

Large Text (above 18pt) WCAG AAA ✓ Pass

Any Text WCAG AAA ✓ Pass

If you want to check with other color combinations, try the [Color Contrast Checker](#).

RGB 253, 143, 104 Background



This preview shows how black text looks on a background with the RGB color 253, 143, 104.

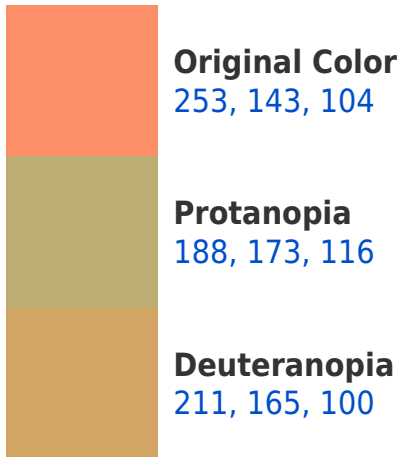



This preview shows how white text looks on a background with the RGB color 253, 143, 104.

Color Blindness Simulation

Color vision deficiency is a very complex topic, and I could not describe the different causes any better than Wikipedia does, so if you want to learn more, you should check out their [article about color blindness](#).

Dichromacy





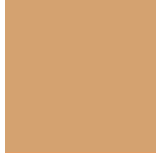
Tritanopia
255, 138, 148

Trichromacy



Original Color

253, 143, 104



Protanomaly

212, 162, 112



Deuteranomaly

226, 157, 101



Tritanomaly

254, 140, 132

Monochromacy



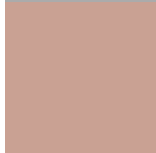
Original Color

253, 143, 104



Achromatopsia

171, 171, 171



Achromatomaly

201, 161, 147

CSS Examples

Text

The CSS property to change the color of the text to RGB 253, 143, 104 is called "color". The color property can be set on classes, ids or directly on the HTML element.

This example shows how text in the color `rgb(253, 143, 104)` looks like.

```
.text, #text, p{  
    color:rgb(253, 143, 104)  
}
```

If you want to add a text shadow in that color use the text-shadow property, you can generate a text shadow directly with our [CSS Text Shadow Generator](#).

Here you see how black text with a 4 pixel rgb(253, 143, 104) colored shadow looks like.

```
.shadow{ text-shadow: 4px 4px 2px rgb(253, 143, 104) }
```

Border

The CSS property to change the border of an element to RGB 253, 143, 104 is called "border". The border property can be set on classes, ids or directly on the HTML element.

This example shows the color as border, it can be applied via the CSS property "border" or "border-color".

```
.border, #border, table{ border:4px solid rgb(253, 143, 104) }
```

If only the border color should be changed use the property `border-color`.

```
.border{ border-color:rgb(253, 143, 104) }
```

If you want to add a box shadow in that color use:

Here you see how a box with a 4 pixel `rgb(253, 143, 104)` colored shadow looks like.

```
.boxshadow{ -moz-box-shadow:4px 4px 4px 4px rgb(253, 143, 104); -webkit-box-shadow:4px 4px 4px 4px rgb(253, 143, 104); box-shadow:4px 4px 4px 4px rgb(253, 143, 104) }
```

Background

The CSS property to change the background color of an element to RGB 253, 143, 104 is called "background". The background property can be set on classes, ids or directly on the HTML element.

```
.background, #background, body{  
background: rgb(253, 143, 104) }
```

If only the background color should be changed can be used:

```
.background{ background-color: rgb(253,  
143, 104) }
```

This example shows the color as background, it is applied via the CSS property "background".

To optimize and compress your CSS code, you can use our [online CSS compressor and optimizer](#) based on csstidy. If you want to create a linear or radial gradient as background or border, check our [CSS Gradient Generator](#).

Hey! You found this booklet interesting? Support Converting Colors with the new Membership Option!

The pro membership hides all ads, plus gives you double the colors in the color bucket, and more awesome pro features!

[Learn more, Memberships starting at \\$2.50/m!](#)

**Follow me
on Twitter!**

@ConvertingColor