

Converting Colors

RGB(253, 187, 177)

Have a look what the booklet for
RGB(253, 187, 177) contains.

RGB(253, 187, 177)	3
<i>Conversions</i>	4
<i>Details</i>	6
<i>Harmonies</i>	11
<i>Previews</i>	23
<i>Color Blindness Simulation</i>	26
<i>CSS Examples</i>	29

Color

RGB(253, 187, 177)

Conversions

Conversions Part 1

Format	Color
Hex	FDBBB1
RGB	253, 187, 177
RGB Percent	99%, 73%, 69%
CMY	0.0078, 0.2667, 0.3059
CMYK	0.00, 0.26, 0.30, 0.01
HSL	8°, 95%, 84%
HSV	8°, 30%, 99%
XYZ	66.2141, 59.5976, 49.6086
YIQ	205.5940, 42.5460, 10.8820

Conversions

Conversions Part 2

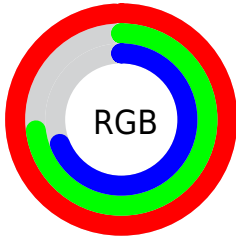
Format	Color
R _Y B	253, 189, 177
Decimal	16628657
CIE Lab	81.62, 22.47, 14.41
CIE LCh	82, 26.695, 32.675
Yxy	59.5976, 0.3775, 0.3397
Android (android.graphics.Color)	4294818737 (0xFFFDDBB1)
YUV	205.5940, -14.0968, 41.5751
Hunter-Lab	77.1995, 18.0007, 15.9397

Details

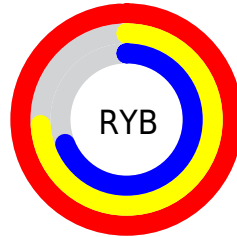
The RGB color **253, 187, 177** is a light color, and the websafe version is hex **FFCCCC**. A complement of this color would be **177, 243, 253**, and the grayscale version is **206, 206, 206**.

A 20% lighter version of the original color is **255, 243, 233**, and **195, 133, 124** is the 20% darker color. If you saturate the color by 10%, you get **253, 165, 152**, and if you desaturate by 10%, it is **253, 209, 202**.

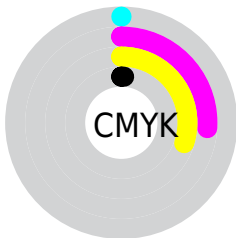
Distribution



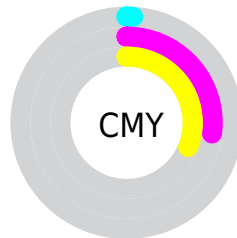
- Red (99%)
- Green (73%)
- Blue (69%)



- Red (99%)
- Yellow (74%)
- Blue (69%)



- Cyan (0%)
- Magenta (26%)
- Yellow (30%)
- Black (1%)



- Cyan (1%)
- Magenta (27%)
- Yellow (31%)

Brightness & Saturation Gradients

These gradients show how the RGB color 253, 187, 177 changes by changing the brightness by 10 percent. The first figure shows a shift by +10% for each color and the second figure -10%.


Similar to the brightness gradients but the following saturation gradients show a change of the RGB color 253, 187, 177 by changing the saturation by 10% instead.

 253, 187, 177

255, 255, 255

 255, 243, 233

 253, 187, 177

 224, 160, 150

 195, 133, 124

 167, 108, 100

 139, 83, 76

 113, 60, 53

 86, 37, 32

 61, 15, 9

 39, 0, 0

 0, 0, 0

■ 253, 187, 177

■ 253, 187, 177

■ 253, 165, 152

■ 253, 209, 202

■ 253, 143, 126

■ 253, 231, 228

■ 253, 121, 101

■ 253, 253, 253

■ 253, 99, 76

253, 255, 255

■ 253, 77, 50

■ 253, 55, 25

■ 253, 33, 0

Harmonies

Analogous

The Analogous color harmony consists of three colors that are next to each other on the color wheel.



252, 185, 201



253, 187, 177



241, 194, 159

Triad

The Triadic color harmony groups three colors that are evenly spaced from another and form a triangle on the color wheel.



253, 187, 177



163, 215, 179



176, 204, 252

Complementary

The Complementary color scheme is a pair of colors which are on the opposite of each other on the color wheel.



253, 187, 177



177, 243, 253

Split Complementary

Split-complementary colors differ from the complementary color scheme. The scheme consists of three colors, the original color and two neighbors of the complement color.



145, 212, 247



253, 187, 177



140, 217, 204

Square

The Square scheme is like the rectangle color scheme, but the four colors are evenly spaced on the color wheel.



253, 187, 177



192, 210, 160



131, 216, 229



210, 196, 245

Rectangle

The Rectangle color scheme consists of four colors that form a rectangle on the color wheel.



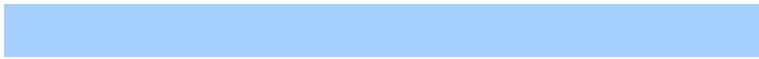
253, 187, 177



227, 199, 154



131, 216, 229



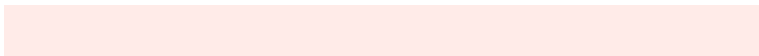
165, 207, 252

Sweetspot

The Sweet Spot groups the original color and five complimentary colors.



253, 187, 177



255, 235, 232



253, 177, 244



128, 115, 113



0, 0, 0



128, 128, 128

Same Dimension

The Same Dimension uses a secret algorithm to generate beautiful new colors.



253, 187, 177



255, 175, 163



253, 224, 177



128, 116, 115



191, 25, 0



64, 8, 0

Inverse Universe

The Inverse Universe completely reimagines the original color for something new.



177, 243, 253



163, 243, 255



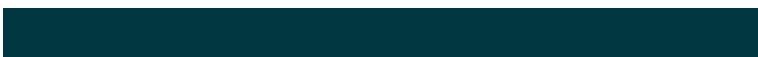
177, 206, 253



115, 126, 128



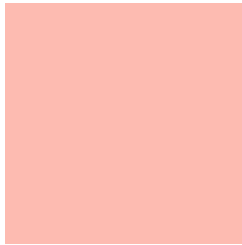
0, 166, 191



0, 55, 64

Previews

White Background



This preview shows how the RGB color 253, 187, 177 looks on a white background.

Color Contrast Check

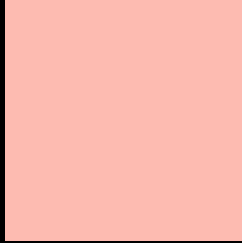
Large Text (above 18pt) WCAG AA × Fail

Any Text WCAG AA × Fail

Large Text (above 18pt) WCAG AAA × Fail

Any Text WCAG AAA × Fail

Black Background



This preview shows how the RGB color 253, 187, 177 looks on a black background.

Color Contrast Check

Large Text (above 18pt) WCAG AA ✓ Pass

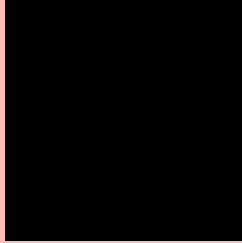
Any Text WCAG AA ✓ Pass

Large Text (above 18pt) WCAG AAA ✓ Pass

Any Text WCAG AAA ✓ Pass

If you want to check with other color combinations, try the [Color Contrast Checker](#).

RGB 253, 187, 177 Background



This preview shows how black text looks on a background with the RGB color 253, 187, 177.



This preview shows how white text looks on a background with the RGB color 253, 187, 177.

Color Blindness Simulation

Color vision deficiency is a very complex topic, and I could not describe the different causes any better than Wikipedia does, so if you want to learn more, you should check out their [article about color blindness](#).


Dichromacy



Original Color
253, 187, 177

Protanopia
211, 203, 185

Deuteranopia
233, 196, 175



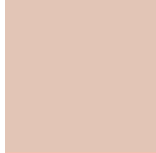
Tritanopia
255, 184, 198

Trichromacy



Original Color

253, 187, 177



Protanomaly

226, 197, 182



Deuteranomaly

240, 193, 176



Tritanomaly

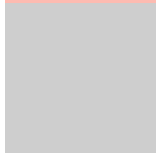
254, 185, 190

Monochromacy



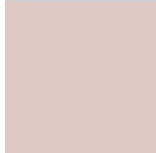
Original Color

253, 187, 177



Achromatopsia

206, 206, 206



Achromatomaly

223, 199, 195

CSS Examples

Text

The CSS property to change the color of the text to RGB 253, 187, 177 is called "color". The color property can be set on classes, ids or directly on the HTML element.

This example shows how text in the color `rgb(253, 187, 177)` looks like.

```
.text, #text, p{  
    color:rgb(253, 187, 177)  
}
```

If you want to add a text shadow in that color use the text-shadow property, you can generate a text shadow directly with our [CSS Text Shadow Generator](#).

Here you see how black text with a 4 pixel rgb(253, 187, 177) colored shadow looks like.

```
.shadow{ text-shadow: 4px 4px 2px rgb(253, 187, 177) }
```

Border

The CSS property to change the border of an element to RGB 253, 187, 177 is called "border". The border property can be set on classes, ids or directly on the HTML element.

This example shows the color as border, it can be applied via the CSS property "border" or "border-color".

```
.border, #border, table{ border:4px solid rgb(253, 187, 177) }
```

If only the border color should be changed use the property `border-color`.

```
.border{ border-color:rgb(253, 187, 177) }
```

If you want to add a box shadow in that color use:

Here you see how a box with a 4 pixel `rgb(253, 187, 177)` colored shadow looks like.

```
.boxshadow{ -moz-box-shadow:4px 4px 4px 4px rgb(253, 187, 177); -webkit-box-shadow:4px 4px 4px 4px rgb(253, 187, 177); box-shadow:4px 4px 4px 4px rgb(253, 187, 177) }
```

Background

The CSS property to change the background color of an element to RGB 253, 187, 177 is called "background". The background property can be set on classes, ids or directly on the HTML element.

```
.background, #background, body{  
background: rgb(253, 187, 177) }
```

If only the background color should be changed can be used:

```
.background{ background-color: rgb(253,  
187, 177) }
```

This example shows the color as background, it is applied via the CSS property "background".

To optimize and compress your CSS code, you can use our [online CSS compressor and optimizer](#) based on csstidy. If you want to create a linear or radial gradient as background or border, check our [CSS Gradient Generator](#).

Hey! You found this booklet interesting? Support Converting Colors with the new Membership Option!

The pro membership hides all ads, plus gives you double the colors in the color bucket, and more awesome pro features!

[Learn more, Memberships starting at \\$2.50/m!](#)

**Follow me
on Twitter!**

@ConvertingColor