

Converting Colors

RGB(253, 94, 140)

Have a look what the booklet for
RGB(253, 94, 140) contains.

RGB(253, 94, 140)	3
<i>Conversions</i>	4
<i>Details</i>	6
<i>Harmonies</i>	11
<i>Previews</i>	23
<i>Color Blindness Simulation</i>	26
<i>CSS Examples</i>	29

Color

RGB(253, 94, 140)

Conversions

Conversions Part 1

Format	Color
Hex	FD5E8C
RGB	253, 94, 140
RGB Percent	99%, 37%, 55%
CMY	0.0078, 0.6314, 0.4510
CMYK	0.00, 0.63, 0.45, 0.01
HSL	343°, 98%, 68%
HSV	343°, 63%, 99%
XYZ	49.2443, 30.7815, 28.1569
YIQ	146.7850, 79.9980, 48.0140

Conversions

Conversions Part 2

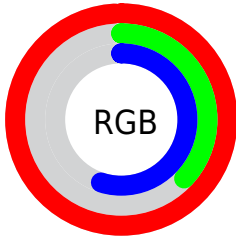
Format	Color
R _{YB}	253, 94, 140
Decimal	16604812
CIE Lab	62.32, 63.99, 7.62
CIE LCh	62, 64.438, 6.790
Yxy	30.7815, 0.4552, 0.2845
Android (android.graphics.Color)	4294794892 (0xFFFD5E8C)
YUV	146.7850, -3.3450, 93.1506
Hunter-Lab	55.4811, 61.3426, 8.7468

Details

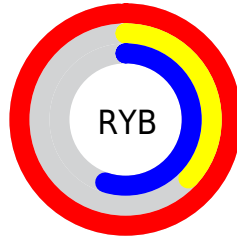
The RGB color **253, 94, 140** is a light color, and the websafe version is hex **FF6699**. The color can be described as light muted rose. A complement of this color would be **94, 253, 207**, and the grayscale version is **147, 147, 147**.

A 20% lighter version of the original color is **255, 151, 193**, and **191, 28, 90** is the 20% darker color. If you saturate the color by 10%, you get **253, 69, 122**, and if you desaturate by 10%, it is **253, 119, 158**.

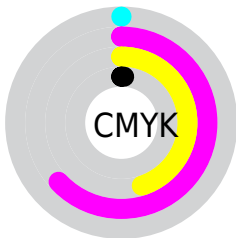
Distribution



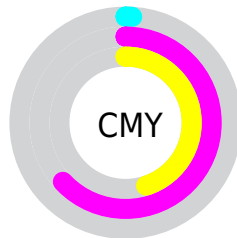
- Red (99%)
- Green (37%)
- Blue (55%)



- Red (99%)
- Yellow (37%)
- Blue (55%)



- Cyan (0%)
- Magenta (63%)
- Yellow (45%)
- Black (1%)



- Cyan (1%)
- Magenta (63%)
- Yellow (45%)

Brightness & Saturation Gradients

These gradients show how the RGB color 253, 94, 140 changes by changing the brightness by 10 percent. The first figure shows a shift by +10% for each color and the second figure -10%.

Similar to the brightness gradients but the following saturation gradients show a change of the RGB color 253, 94, 140 by changing the saturation by 10% instead.


 253, 94, 140

 253, 94, 140

255, 255, 255

 222, 64, 115

 255, 151, 193

 191, 28, 90

 255, 180, 221

 161, 0, 67

 255, 209, 250

 131, 0, 45

 255, 239, 255

 102, 0, 25

 74, 0, 2

 43, 0, 1

 0, 0, 0

 253, 94, 140

 253, 94, 140

■ 253, 69, 122

■ 253, 119, 158

■ 253, 43, 104

■ 253, 145, 176

■ 253, 18, 86

■ 253, 170, 194

■ 253, 0, 73

■ 253, 195, 212

■ 253, 221, 230

■ 253, 246, 248

253, 255, 255

Harmonies

Analogous

The Analogous color harmony consists of three colors that are next to each other on the color wheel.



229, 105, 197



253, 94, 140



246, 107, 85

Triad

The Triadic color harmony groups three colors that are evenly spaced from another and form a triangle on the color wheel.



253, 94, 140



107, 166, 50



0, 169, 255

Complementary

The Complementary color scheme is a pair of colors which are on the opposite of each other on the color wheel.



253, 94, 140



94, 253, 207

Split Complementary

Split-complementary colors differ from the complementary color scheme. The scheme consists of three colors, the original color and two neighbors of the complement color.



0, 176, 218



253, 94, 140



0, 174, 103

Square

The Square scheme is like the rectangle color scheme, but the four colors are evenly spaced on the color wheel.



253, 94, 140



167, 152, 13



0, 178, 162



17, 153, 255

Rectangle

The Rectangle color scheme consists of four colors that form a rectangle on the color wheel.



253, 94, 140



227, 123, 53



0, 178, 162



0, 172, 246

Sweetspot

The Sweet Spot groups the original color and five complimentary colors.



253, 94, 140



255, 207, 221



205, 94, 253



128, 98, 107



0, 0, 0



128, 128, 128

Same Dimension

The Same Dimension uses a secret algorithm to generate beautiful new colors.



253, 94, 140



255, 64, 119



253, 126, 94



128, 115, 118



191, 0, 55



64, 0, 18

Inverse Universe

The Inverse Universe completely reimagines the original color for something new.



253, 94, 140



255, 64, 119



94, 221, 253



128, 115, 118



191, 0, 55



64, 0, 18

Previews

White Background



This preview shows how the RGB color 253, 94, 140 looks on a white background.

Color Contrast Check

Large Text (above 18pt) WCAG AA × Fail

Any Text WCAG AA × Fail

Large Text (above 18pt) WCAG AAA × Fail

Any Text WCAG AAA × Fail

Black Background



This preview shows how the RGB color 253, 94, 140 looks on a black background.

Color Contrast Check

Large Text (above 18pt) WCAG AA ✓ Pass

Any Text WCAG AA ✓ Pass

Large Text (above 18pt) WCAG AAA ✓ Pass

Any Text WCAG AAA ✓ Pass

If you want to check with other color combinations, try the [Color Contrast Checker](#).

RGB 253, 94, 140 Background



This preview shows how black text looks on a background with the RGB color 253, 94, 140.



This preview shows how white text looks on a background with the RGB color 253, 94, 140.

Color Blindness Simulation

Color vision deficiency is a very complex topic, and I could not describe the different causes any better than Wikipedia does, so if you want to learn more, you should check out their [article about color blindness](#).

Dichromacy



Original Color
253, 94, 140

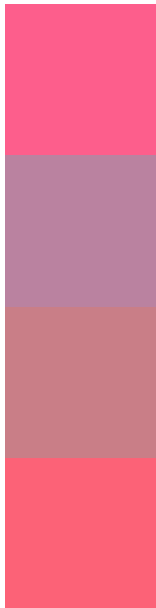
Protanopia
147, 150, 172

Deuteranopia
172, 145, 132



Tritanopia
251, 101, 107

Trichromacy



Original Color
253, 94, 140

Protanomaly
186, 130, 160

Deuteranomaly
201, 126, 135

Tritanomaly
252, 98, 119

Monochromacy



Original Color
253, 94, 140

Achromatopsia
147, 147, 147

Achromatomaly
186, 128, 144

CSS Examples

Text

The CSS property to change the color of the text to RGB 253, 94, 140 is called "color". The color property can be set on classes, ids or directly on the HTML element.

This example shows how text in the color rgb(253, 94, 140) looks like.

```
.text, #text, p{  
    color:rgb(253, 94, 140)  
}
```

If you want to add a text shadow in that color use the text-shadow property, you can generate a text shadow directly with our [CSS Text Shadow Generator](#).

Here you see how black text with a 4 pixel rgb(253, 94, 140) colored shadow looks like.

```
.shadow{ text-shadow: 4px 4px 2px rgb(253, 94, 140) }
```

Border

The CSS property to change the border of an element to RGB 253, 94, 140 is called "border". The border property can be set on classes, ids or directly on the HTML element.

This example shows the color as border, it can be applied via the CSS property "border" or "border-color".

```
.border, #border, table{ border:4px solid rgb(253, 94, 140) }
```

If only the border color should be changed use the property `border-color`.

```
.border{ border-color:rgb(253, 94, 140) }
```

If you want to add a box shadow in that color use:

Here you see how a box with a 4 pixel `rgb(253, 94, 140)` colored shadow looks like.

```
.boxshadow{ -moz-box-shadow:4px 4px 4px  
4px rgb(253, 94, 140); -webkit-box-  
shadow:4px 4px 4px 4px rgb(253, 94, 140);  
box-shadow:4px 4px 4px 4px rgb(253, 94,  
140) }
```

Background

The CSS property to change the background color of an element to RGB 253, 94, 140 is called "background". The background property can be set on classes, ids or directly on the HTML element.

```
.background, #background, body{  
background: rgb(253, 94, 140) }
```

If only the background color should be changed can be used:

```
.background{ background-color: rgb(253, 94,  
140) }
```

This example shows the color as background, it is applied via the CSS property "background".

To optimize and compress your CSS code, you can use our [online CSS compressor and optimizer](#) based on csstidy. If you want to create a linear or radial gradient as background or border, check our [CSS Gradient Generator](#).

Hey! You found this booklet interesting? Support Converting Colors with the new Membership Option!

The pro membership hides all ads, plus gives you double the colors in the color bucket, and more awesome pro features!

[Learn more, Memberships starting at \\$2.50/m!](#)

**Follow me
on Twitter!**

@ConvertingColor