

Converting Colors

RGB(254, 190, 163)

Have a look what the booklet for
RGB(254, 190, 163) contains.

RGB(254, 190, 163)	3
<i>Conversions</i>	4
<i>Details</i>	6
<i>Harmonies</i>	11
<i>Previews</i>	23
<i>Color Blindness Simulation</i>	26
<i>CSS Examples</i>	29

Color

RGB(254, 190, 163)

Conversions

Conversions Part 1

Format	Color
Hex	<code>FEBEA3</code>
RGB	<code>254, 190, 163</code>
RGB Percent	<code>100%, 75%, 64%</code>
CMY	<code>0.0039, 0.2549, 0.3608</code>
CMYK	<code>0.00, 0.25, 0.36, 0.00</code>
HSL	<code>18°, 98%, 82%</code>
HSV	<code>18°, 36%, 100%</code>
XYZ	<code>65.8974, 60.5421, 42.8630</code>
YIQ	<code>206.0580, 46.8110, 5.1710</code>

Conversions

Conversions Part 2

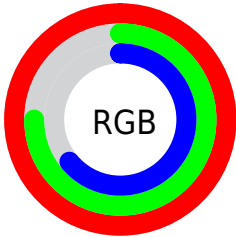
Format	Color
RYB	254, 201, 163
Decimal	16694947
CIELab	82.13, 19.55, 22.61
CIELCh	82, 29.894, 49.155
Yxy	60.5421, 0.3892, 0.3576
Android (android.graphics.Color)	4294885027 (0xFFFEBEA3)
YUV	206.0580, -21.2276, 42.0451
Hunter-Lab	77.8088, 15.0088, 21.8048

Details

The RGB color **254, 190, 163** is a light color, and the websafe version is hex **FFCC99**. A complement of this color would be **163, 227, 254**, and the grayscale version is **206, 206, 206**.

A 20% lighter version of the original color is **255, 246, 218**, and **196, 136, 111** is the 20% darker color. If you saturate the color by 10%, you get **254, 172, 138**, and if you desaturate by 10%, it is **254, 208, 188**.

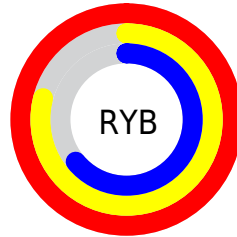
Distribution



Red (100%)

Green (75%)

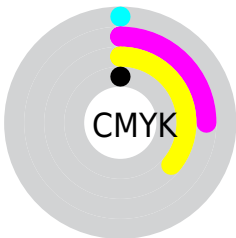
Blue (64%)



Red (100%)

Yellow (79%)

Blue (64%)

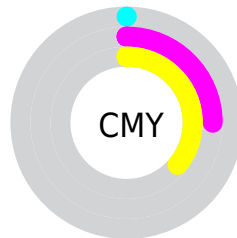


Cyan (0%)

Magenta (25%)

Yellow (36%)

Black (0%)



Cyan (0%)


Magenta (25%)

Yellow (36%)

Brightness & Saturation Gradients


These gradients show how the RGB color 254, 190, 163 changes by changing the brightness by 10 percent. The first figure shows a shift by +10% for each color and the second figure -10%.

Similar to the brightness gradients but the following saturation gradients show a change of the RGB color 254, 190, 163 by changing the saturation by 10% instead.

 254, 190, 163

 254, 190, 163

255, 255, 255

 225, 163, 137

 255, 246, 218

 196, 136, 111

 255, 255, 247

 167, 111, 87

 140, 86, 63

 112, 63, 41

 86, 40, 20

 61, 18, 0

 38, 0, 0

 0, 0, 0

■ 254, 190, 163

■ 254, 190, 163

■ 254, 172, 138

■ 254, 208, 188

■ 254, 154, 112

■ 254, 226, 214

■ 254, 136, 87

■ 254, 244, 239

■ 254, 119, 61

254, 255, 255

■ 254, 101, 36

■ 254, 83, 11

■ 254, 75, 0

Harmonies

Analogous

The Analogous color harmony consists of three colors that are next to each other on the color wheel.



255, 184, 187



254, 190, 163



234, 199, 150

Triad

The Triadic color harmony groups three colors that are evenly spaced from another and form a triangle on the color wheel.



254, 190, 163



143, 219, 193



195, 201, 255

Complementary

The Complementary color scheme is a pair of colors which are on the opposite of each other on the color wheel.



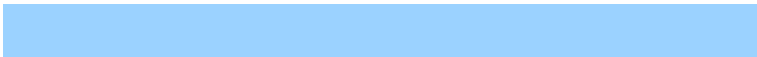
254, 190, 163



163, 227, 254

Split Complementary

Split-complementary colors differ from the complementary color scheme. The scheme consists of three colors, the original color and two neighbors of the complement color.



155, 210, 255



254, 190, 163



122, 220, 222

Square

The Square scheme is like the rectangle color scheme, but the four colors are evenly spaced on the color wheel.



254, 190, 163



174, 215, 167



126, 217, 246



230, 191, 241

Rectangle

The Rectangle color scheme consists of four colors that form a rectangle on the color wheel.



254, 190, 163



216, 205, 149



126, 217, 246



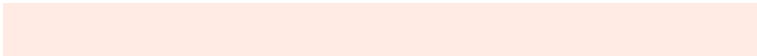
182, 204, 255

Sweetspot

The Sweet Spot groups the original color and five complimentary colors.



254, 190, 163



255, 235, 227



254, 163, 228



128, 116, 111



0, 0, 0



128, 128, 128

Same Dimension

The Same Dimension uses a secret algorithm to generate beautiful new colors.



254, 190, 163



255, 178, 145



254, 234, 163



128, 119, 115



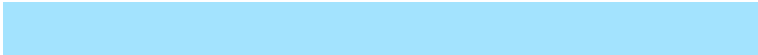
191, 57, 0



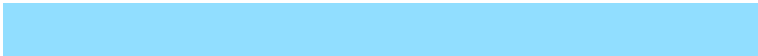
64, 19, 0

Inverse Universe

The Inverse Universe completely reimagines the original color for something new.



163, 227, 254



145, 222, 255



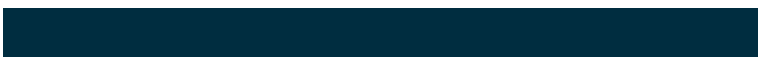
163, 183, 254



115, 124, 128



0, 135, 191



0, 45, 64

Previews

White Background



This preview shows how the RGB color 254, 190, 163 looks on a white background.

Color Contrast Check

Large Text (above 18pt) WCAG AA × Fail

Any Text WCAG AA × Fail

Large Text (above 18pt) WCAG AAA × Fail

Any Text WCAG AAA × Fail

Black Background



This preview shows how the RGB color 254, 190, 163 looks on a black background.

Color Contrast Check

Large Text (above 18pt) WCAG AA ✓ Pass

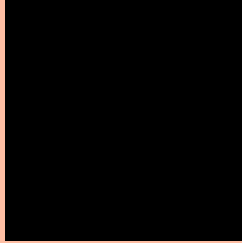
Any Text WCAG AA ✓ Pass

Large Text (above 18pt) WCAG AAA ✓ Pass

Any Text WCAG AAA ✓ Pass

If you want to check with other color combinations, try the [Color Contrast Checker](#).

RGB 254, 190, 163 Background



This preview shows how black text looks on a background with the RGB color 254, 190, 163.







This preview shows how white text looks on a background with the RGB color 254, 190, 163.

Color Blindness Simulation

Color vision deficiency is a very complex topic, and I could not describe the different causes any better than Wikipedia does, so if you want to learn more, you should check out their [article about color blindness](#).

Dichromacy

	Original Color 254, 190, 163
	Protanopia 216, 204, 170
	Deuteranopia 239, 196, 162



Tritanopia
255, 186, 199

Trichromacy



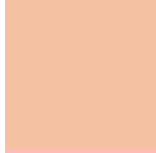
Original Color

254, 190, 163



Protanomaly

230, 199, 167



Deuteranomaly

244, 194, 162



Tritanomaly

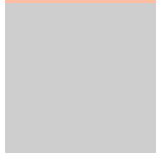
255, 187, 186

Monochromacy



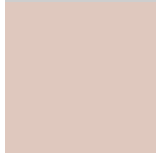
Original Color

254, 190, 163



Achromatopsia

206, 206, 206



Achromatomaly

223, 200, 190

CSS Examples

Text

The CSS property to change the color of the text to RGB 254, 190, 163 is called "color". The color property can be set on classes, ids or directly on the HTML element.

This example shows how text in the color rgb(254, 190, 163) looks like.

```
.text, #text, p{  
    color:rgb(254, 190, 163)  
}
```

If you want to add a text shadow in that color use the text-shadow property, you can generate a text shadow directly with our [CSS Text Shadow Generator](#).

Here you see how black text with a 4 pixel rgb(254, 190, 163) colored shadow looks like.

```
.shadow{ text-shadow: 4px 4px 2px rgb(254, 190, 163) }
```

Border

The CSS property to change the border of an element to RGB 254, 190, 163 is called "border". The border property can be set on classes, ids or directly on the HTML element.

This example shows the color as border, it can be applied via the CSS property "border" or "border-color".

```
.border, #border, table{ border:4px solid rgb(254, 190, 163) }
```

If only the border color should be changed use the property `border-color`.

```
.border{ border-color:rgb(254, 190, 163) }
```

If you want to add a box shadow in that color use:

Here you see how a box with a 4 pixel `rgb(254, 190, 163)` colored shadow looks like.

```
.boxshadow{ -moz-box-shadow:4px 4px 4px  
4px rgb(254, 190, 163); -webkit-box-  
shadow:4px 4px 4px 4px rgb(254, 190, 163);  
box-shadow:4px 4px 4px 4px rgb(254, 190,  
163) }
```

Background

The CSS property to change the background color of an element to RGB 254, 190, 163 is called "background". The background property can be set on classes, ids or directly on the HTML element.

```
.background, #background, body{  
background: rgb(254, 190, 163) }
```

If only the background color should be changed can be used:

```
.background{ background-color: rgb(254,  
190, 163) }
```

This example shows the color as background, it is applied via the CSS property "background".

To optimize and compress your CSS code, you can use our [online CSS compressor and optimizer](#) based on csstidy. If you want to create a linear or radial gradient as background or border, check our [CSS Gradient Generator](#).

Hey! You found this booklet interesting? Support Converting Colors with the new Membership Option!

The pro membership hides all ads, plus gives you double the colors in the color bucket, and more awesome pro features!

[Learn more, Memberships starting at \\$2.50/m!](#)

**Follow me
on Twitter!**

@ConvertingColor