

Converting Colors

RGB(254, 96, 125)

Have a look what the booklet for
RGB(254, 96, 125) contains.

RGB(254, 96, 125)	3
<i>Conversions</i>	4
<i>Details</i>	6
<i>Harmonies</i>	11
<i>Previews</i>	23
<i>Color Blindness Simulation</i>	26
<i>CSS Examples</i>	29

Color

RGB(254, 96, 125)

Conversions

Conversions Part 1

Format	Color
Hex	FE607D
RGB	254, 96, 125
RGB Percent	100%, 38%, 49%
CMY	0.0039, 0.6235, 0.5098
CMYK	0.00, 0.62, 0.51, 0.00
HSL	349°, 99%, 69%
HSV	349°, 62%, 100%
XYZ	48.7576, 30.9172, 22.7999
YIQ	146.5480, 84.8590, 42.5150

Conversions

Conversions Part 2

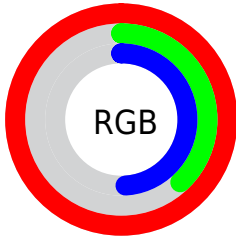
Format	Color
RYB	254, 96, 125
Decimal	16670845
CIELab	62.44, 62.16, 16.47
CIELCh	62, 64.308, 14.842
Yxy	30.9172, 0.4758, 0.3017
Android (android.graphics.Color)	4294860925 (0xFFFE607D)
YUV	146.5480, -10.6232, 94.2354
Hunter-Lab	55.6033, 59.2180, 14.6107

Details

The RGB color **254, 96, 125** is a light color, and the websafe version is hex **FF6699**. A complement of this color would be **96, 254, 225**, and the grayscale version is **147, 147, 147**.

A 20% lighter version of the original color is **255, 153, 177**, and **192, 33, 76** is the 20% darker color. If you saturate the color by 10%, you get **254, 71, 104**, and if you desaturate by 10%, it is **254, 121, 146**.

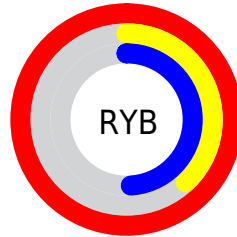
Distribution



Red (100%)

Green (38%)

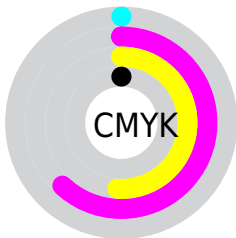
Blue (49%)



Red (100%)

Yellow (38%)

Blue (49%)

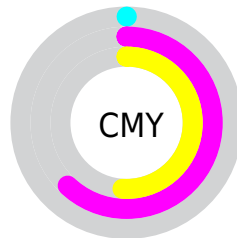


Cyan (0%)

Magenta (62%)

Yellow (51%)

Black (0%)



Cyan (0%)

Magenta (62%)

Yellow (51%)

Brightness & Saturation Gradients

These gradients show how the RGB color 254, 96, 125 changes by changing the brightness by 10 percent. The first figure shows a shift by +10% for each color and the second figure -10%.

Similar to the brightness gradients but the following saturation gradients show a change of the RGB color 254, 96, 125 by changing the saturation by 10% instead.



254, 96, 125



254, 96, 125

255, 255, 255



223, 67, 100



255, 153, 177



192, 33, 76



255, 182, 205



161, 0, 54



255, 211, 233



131, 0, 33



255, 240, 255



101, 0, 11



73, 0, 2



42, 0, 1



0, 0, 0



254, 96, 125



254, 96, 125

■ 254, 71, 104

■ 254, 121, 146

■ 254, 45, 84

■ 254, 147, 166

■ 254, 20, 63

■ 254, 172, 187

■ 254, 0, 47

■ 254, 198, 208

■ 254, 223, 229

■ 254, 248, 249

254, 255, 255

Harmonies

Analogous

The Analogous color harmony consists of three colors that are next to each other on the color wheel.



239, 100, 182



254, 96, 125



240, 114, 72

Triad

The Triadic color harmony groups three colors that are evenly spaced from another and form a triangle on the color wheel.



254, 96, 125



86, 169, 64



0, 166, 255

Complementary

The Complementary color scheme is a pair of colors which are on the opposite of each other on the color wheel.



254, 96, 125



96, 254, 225

Split Complementary

Split-complementary colors differ from the complementary color scheme. The scheme consists of three colors, the original color and two neighbors of the complement color.



0, 175, 230



254, 96, 125



0, 176, 119

Square

The Square scheme is like the rectangle color scheme, but the four colors are evenly spaced on the color wheel.



254, 96, 125



153, 157, 20



0, 178, 179



90, 148, 255

Rectangle

The Rectangle color scheme consists of four colors that form a rectangle on the color wheel.



254, 96, 125



217, 130, 42



0, 178, 179



0, 170, 254

Sweetspot

The Sweet Spot groups the original color and five complimentary colors.



254, 96, 125



255, 207, 215



222, 96, 254



128, 98, 104



0, 0, 0



128, 128, 128

Same Dimension

The Same Dimension uses a secret algorithm to generate beautiful new colors.



254, 96, 125



255, 64, 99



254, 143, 96



128, 115, 117



191, 0, 35



64, 0, 12

Inverse Universe

The Inverse Universe completely reimagines the original color for something new.



254, 96, 125



255, 64, 99



96, 207, 254



128, 115, 117



191, 0, 35



64, 0, 12

Previews

White Background



This preview shows how the RGB color 254, 96, 125 looks on a white background.

Color Contrast Check

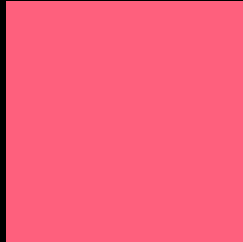
Large Text (above 18pt) WCAG AA × Fail

Any Text WCAG AA × Fail

Large Text (above 18pt) WCAG AAA × Fail

Any Text WCAG AAA × Fail

Black Background



This preview shows how the RGB color 254, 96, 125 looks on a black background.

Color Contrast Check

Large Text (above 18pt) WCAG AA ✓ Pass

Any Text WCAG AA ✓ Pass

Large Text (above 18pt) WCAG AAA ✓ Pass

Any Text WCAG AAA ✓ Pass

If you want to check with other color combinations, try the [Color Contrast Checker](#).

RGB 254, 96, 125 Background



This preview shows how black text looks on a background with the RGB color 254, 96, 125.

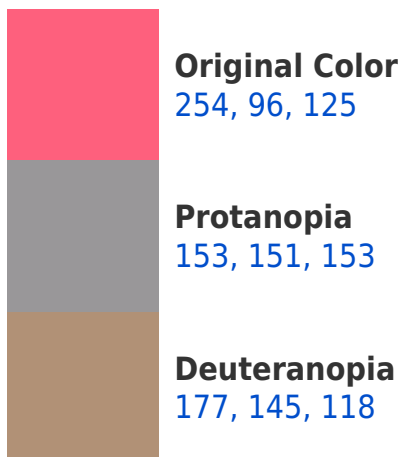


This preview shows how white text looks on a background with the RGB color 254, 96, 125.

Color Blindness Simulation

Color vision deficiency is a very complex topic, and I could not describe the different causes any better than Wikipedia does, so if you want to learn more, you should check out their [article about color blindness](#).

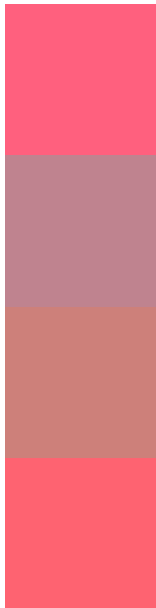
Dichromacy





Tritanopia
253, 100, 106

Trichromacy



Original Color
254, 96, 125

Protanomaly
190, 131, 143

Deuteranomaly
205, 127, 121

Tritanomaly
253, 99, 113

Monochromacy



Original Color
254, 96, 125

Achromatopsia
147, 147, 147

Achromatomaly
186, 128, 139

CSS Examples

Text

The CSS property to change the color of the text to RGB 254, 96, 125 is called "color". The color property can be set on classes, ids or directly on the HTML element.

This example shows how text in the color rgb(254, 96, 125) looks like.

```
.text, #text, p{  
    color:rgb(254, 96, 125)  
}
```

If you want to add a text shadow in that color use the text-shadow property, you can generate a text shadow directly with our [CSS Text Shadow Generator](#).

Here you see how black text with a 4 pixel rgb(254, 96, 125) colored shadow looks like.

```
.shadow{ text-shadow: 4px 4px 2px rgb(254, 96, 125) }
```

Border

The CSS property to change the border of an element to RGB 254, 96, 125 is called "border". The border property can be set on classes, ids or directly on the HTML element.

This example shows the color as border, it can be applied via the CSS property "border" or "border-color".

```
.border, #border, table{ border:4px solid rgb(254, 96, 125) }
```

If only the border color should be changed use the property `border-color`.

```
.border{ border-color:rgb(254, 96, 125) }
```

If you want to add a box shadow in that color use:

Here you see how a box with a 4 pixel `rgb(254, 96, 125)` colored shadow looks like.

```
.boxshadow{ -moz-box-shadow:4px 4px 4px  
4px rgb(254, 96, 125); -webkit-box-  
shadow:4px 4px 4px 4px rgb(254, 96, 125);  
box-shadow:4px 4px 4px 4px rgb(254, 96,  
125) }
```

Background

The CSS property to change the background color of an element to RGB 254, 96, 125 is called "background". The background property can be set on classes, ids or directly on the HTML element.

```
.background, #background, body{  
background: rgb(254, 96, 125) }
```

If only the background color should be changed can be used:

```
.background{ background-color: rgb(254, 96,  
125) }
```

This example shows the color as background, it is applied via the CSS property "background".

To optimize and compress your CSS code, you can use our [online CSS compressor and optimizer](#) based on csstidy. If you want to create a linear or radial gradient as background or border, check our [CSS Gradient Generator](#).

Hey! You found this booklet interesting? Support Converting Colors with the new Membership Option!

The pro membership hides all ads, plus gives you double the colors in the color bucket, and more awesome pro features!

[Learn more, Memberships starting at \\$2.50/m!](#)

**Follow me
on Twitter!**

@ConvertingColor