

Converting Colors

RGB(255, 124, 107)

Have a look what the booklet for
RGB(255, 124, 107) contains.

RGB(255, 124, 107)	3
<i>Conversions</i>	4
<i>Details</i>	6
<i>Harmonies</i>	11
<i>Previews</i>	23
<i>Color Blindness Simulation</i>	26
<i>CSS Examples</i>	29

Color

RGB(255, 124, 107)

Conversions

Conversions Part 1

Format	Color
Hex	FF7C6B
RGB	255, 124, 107
RGB Percent	100%, 49%, 42%
CMY	0.0000, 0.5137, 0.5804
CMYK	0.00, 0.51, 0.58, 0.00
HSL	7°, 100%, 71%
HSV	7°, 58%, 100%
XYZ	51.1015, 36.7368, 18.3075
YIQ	161.2310, 83.5330, 22.4850

Conversions

Conversions Part 2

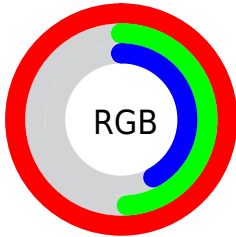
Format	Color
RYB	255, 126, 107
Decimal	16743531
CIELab	67.08, 48.47, 32.85
CIElCh	67, 58.555, 34.129
Yxy	36.7368, 0.4814, 0.3461
Android (android.graphics.Color)	4294933611 (0xFFFF7C6B)
YUV	161.2310, -26.7359, 82.2354
Hunter-Lab	60.6109, 44.4255, 24.5191

Details

The RGB color **255, 124, 107** is a light color, and the websafe version is hex **FF6666**. A complement of this color would be **107, 238, 255**, and the grayscale version is **161, 161, 161**.

A 20% lighter version of the original color is **255, 179, 159**, and **193, 70, 59** is the 20% darker color. If you saturate the color by 10%, you get **255, 101, 82**, and if you desaturate by 10%, it is **255, 147, 133**.

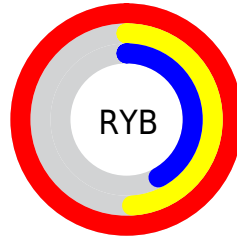
Distribution



Red (100%)

Green (49%)

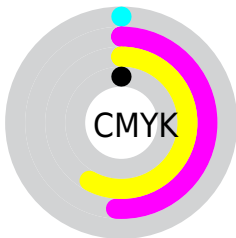
Blue (42%)



Red (100%)

Yellow (49%)

Blue (42%)

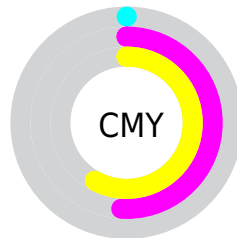


Cyan (0%)

Magenta (51%)

Yellow (58%)

Black (0%)



Cyan (0%)

Magenta (51%)

Yellow (58%)

Brightness & Saturation Gradients

These gradients show how the RGB color 255, 124, 107 changes by changing the brightness by 10 percent. The first figure shows a shift by +10% for each color and the second figure -10%.

Similar to the brightness gradients but the following saturation gradients show a change of the RGB color 255, 124, 107 by changing the saturation by 10% instead.

 255, 124, 107

255, 255, 255


 255, 179, 159

 255, 208, 186

 255, 237, 213

 255, 255, 242

 255, 124, 107

 224, 97, 83

 193, 70, 59

 163, 43, 37

 133, 6, 16

 103, 0, 0

 74, 0, 0

 47, 0, 2

 0, 0, 0

 255, 124, 107

 255, 124, 107

■ 255, 101, 82

■ 255, 147, 133

■ 255, 79, 56

■ 255, 169, 158

■ 255, 56, 31

■ 255, 192, 184

■ 255, 34, 5

■ 255, 214, 209

■ 255, 29, 0

■ 255, 237, 235

255, 255, 255

Harmonies

Analogous

The Analogous color harmony consists of three colors that are next to each other on the color wheel.



255, 115, 158



255, 124, 107



228, 144, 67

Triad

The Triadic color harmony groups three colors that are evenly spaced from another and form a triangle on the color wheel.



255, 124, 107



45, 186, 115



64, 167, 255

Complementary

The Complementary color scheme is a pair of colors which are on the opposite of each other on the color wheel.



255, 124, 107



107, 238, 255

Split Complementary

Split-complementary colors differ from the complementary color scheme. The scheme consists of three colors, the original color and two neighbors of the complement color.



0, 181, 255



255, 124, 107



0, 189, 169

Square

The Square scheme is like the rectangle color scheme, but the four colors are evenly spaced on the color wheel.



255, 124, 107



131, 177, 70



0, 188, 221



175, 146, 251

Rectangle

The Rectangle color scheme consists of four colors that form a rectangle on the color wheel.



255, 124, 107



201, 157, 52



0, 188, 221



0, 172, 255

Sweetspot

The Sweet Spot groups the original color and five complimentary colors.



255, 124, 107



255, 217, 212



255, 107, 240



128, 105, 102



0, 0, 0



128, 128, 128

Same Dimension

The Same Dimension uses a secret algorithm to generate beautiful new colors.



255, 124, 107



255, 97, 77



255, 196, 107



128, 116, 115



191, 22, 0



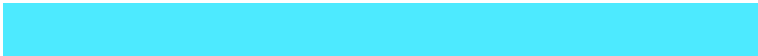
64, 7, 0

Inverse Universe

The Inverse Universe completely reimagines the original color for something new.



107, 238, 255



77, 234, 255



107, 166, 255



115, 126, 128



0, 169, 191



0, 56, 64

Previews

White Background



This preview shows how the RGB color 255, 124, 107 looks on a white background.

Color Contrast Check

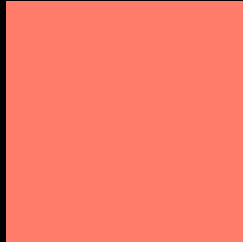
Large Text (above 18pt) WCAG AA × Fail

Any Text WCAG AA × Fail

Large Text (above 18pt) WCAG AAA × Fail

Any Text WCAG AAA × Fail

Black Background



This preview shows how the RGB color 255, 124, 107 looks on a black background.

Color Contrast Check

Large Text (above 18pt) WCAG AA ✓ Pass

Any Text WCAG AA ✓ Pass

Large Text (above 18pt) WCAG AAA ✓ Pass

Any Text WCAG AAA ✓ Pass

If you want to check with other color combinations, try the [Color Contrast Checker](#).

RGB 255, 124, 107 Background



This preview shows how black text looks on a background with the RGB color 255, 124, 107.



This preview shows how white text looks on a background with the RGB color 255, 124, 107.

Color Blindness Simulation

Color vision deficiency is a very complex topic, and I could not describe the different causes any better than Wikipedia does, so if you want to learn more, you should check out their [article about color blindness](#).

Dichromacy



Original Color
255, 124, 107

Protanopia
175, 163, 123

Deuteranopia
198, 156, 101



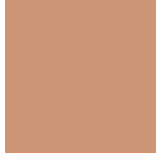
Tritanopia
255, 122, 130

Trichromacy



Original Color

255, 124, 107



Protanomaly

204, 149, 117



Deuteranomaly

219, 144, 103



Tritanomaly

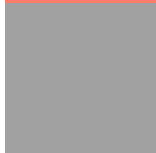
255, 123, 122

Monochromacy



Original Color

255, 124, 107



Achromatopsia

161, 161, 161



Achromatomaly

195, 148, 141

CSS Examples

Text

The CSS property to change the color of the text to RGB 255, 124, 107 is called "color". The color property can be set on classes, ids or directly on the HTML element.

This example shows how text in the color `rgb(255, 124, 107)` looks like.

```
.text, #text, p{  
    color:rgb(255, 124, 107)  
}
```

If you want to add a text shadow in that color use the text-shadow property, you can generate a text shadow directly with our [CSS Text Shadow Generator](#).

Here you see how black text with a 4 pixel rgb(255, 124, 107) colored shadow looks like.

```
.shadow{ text-shadow: 4px 4px 2px rgb(255, 124, 107) }
```

Border

The CSS property to change the border of an element to RGB 255, 124, 107 is called "border". The border property can be set on classes, ids or directly on the HTML element.

This example shows the color as border, it can be applied via the CSS property "border" or "border-color".

```
.border, #border, table{ border:4px solid rgb(255, 124, 107) }
```

If only the border color should be changed use the property `border-color`.

```
.border{ border-color:rgb(255, 124, 107) }
```

If you want to add a box shadow in that color use:

Here you see how a box with a 4 pixel `rgb(255, 124, 107)` colored shadow looks like.

```
.boxshadow{ -moz-box-shadow:4px 4px 4px  
4px rgb(255, 124, 107); -webkit-box-  
shadow:4px 4px 4px 4px rgb(255, 124, 107);  
box-shadow:4px 4px 4px 4px rgb(255, 124,  
107) }
```

Background

The CSS property to change the background color of an element to RGB 255, 124, 107 is called "background". The background property can be set on classes, ids or directly on the HTML element.

```
.background, #background, body{  
background: rgb(255, 124, 107) }
```

If only the background color should be changed can be used:

```
.background{ background-color: rgb(255,  
124, 107) }
```

This example shows the color as background, it is applied via the CSS property "background".

To optimize and compress your CSS code, you can use our [online CSS compressor and optimizer](#) based on csstidy. If you want to create a linear or radial gradient as background or border, check our [CSS Gradient Generator](#).

Hey! You found this booklet interesting? Support Converting Colors with the new Membership Option!

The pro membership hides all ads, plus gives you double the colors in the color bucket, and more awesome pro features!

[Learn more, Memberships starting at \\$2.50/m!](#)

**Follow me
on Twitter!**

@ConvertingColor