

Converting Colors

RGB(255, 160, 105)

Have a look what the booklet for
RGB(255, 160, 105) contains.

RGB(255, 160, 105)	3
<i>Conversions</i>	4
<i>Details</i>	6
<i>Harmonies</i>	11
<i>Previews</i>	23
<i>Color Blindness Simulation</i>	26
<i>CSS Examples</i>	29

Color

RGB(255, 160, 105)

Conversions

Conversions Part 1

Format	Color
Hex	FFA069
RGB	255, 160, 105
RGB Percent	100%, 63%, 41%
CMY	0.0000, 0.3725, 0.5882
CMYK	0.00, 0.37, 0.59, 0.00
HSL	22°, 100%, 71%
HSV	22°, 59%, 100%
XYZ	56.3606, 47.4215, 19.5473
YIQ	182.1350, 74.2750, 3.0350

Conversions

Conversions Part 2

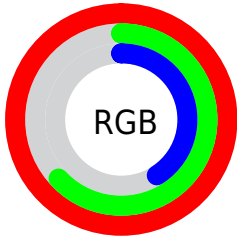
Format	Color
R_{YB}	255, 192, 105
Decimal	16752745
CIE Lab	74.46, 30.16, 43.14
CIE LCh	74, 52.634, 55.044
Yxy	47.4215, 0.4570, 0.3845
Android (android.graphics.Color)	4294942825 (0xFFFFA069)
YUV	182.1350, -38.0276, 63.9026
Hunter-Lab	68.8633, 25.5811, 31.3744

Details

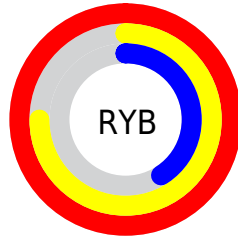
The RGB color **255, 160, 105** is a light color, and the websafe version is hex **FF9966**. A complement of this color would be **105, 200, 255**, and the grayscale version is **182, 182, 182**.

A 20% lighter version of the original color is **255, 215, 157**, and **194, 108, 56** is the 20% darker color. If you saturate the color by 10%, you get **255, 144, 80**, and if you desaturate by 10%, it is **255, 176, 131**.

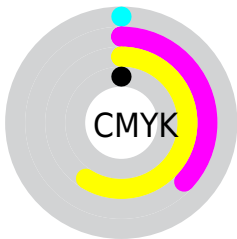
Distribution



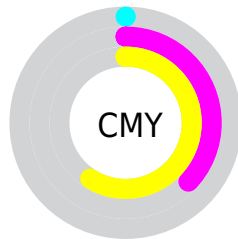
- Red (100%)
- Green (63%)
- Blue (41%)



- Red (100%)
- Yellow (75%)
- Blue (41%)



- Cyan (0%)
- Magenta (37%)
- Yellow (59%)
- Black (0%)



- Cyan (0%)
- Magenta (37%)
- Yellow (59%)

Brightness & Saturation Gradients

These gradients show how the RGB color 255, 160, 105 changes by changing the brightness by 10 percent. The first figure shows a shift by +10% for each color and the second figure -10%.

Similar to the brightness gradients but the following saturation gradients show a change of the RGB color 255, 160, 105 by changing the saturation by 10% instead.

 255, 160, 105

 255, 160, 105

255, 255, 255

 224, 133, 80

 255, 215, 157

 194, 108, 56

 255, 244, 185

 164, 83, 32

 255, 255, 213

 135, 58, 6

 255, 255, 241

 107, 35, 0

 78, 10, 0

 51, 0, 0

 15, 0, 0

 0, 0, 0

■ 255, 160, 105

■ 255, 160, 105

■ 255, 144, 80

■ 255, 176, 131

■ 255, 128, 54

■ 255, 192, 156

■ 255, 112, 28

■ 255, 208, 181

■ 255, 95, 3

■ 255, 225, 207

■ 255, 94, 0

■ 255, 241, 233

255, 255, 255

Harmonies

Analogous

The Analogous color harmony consists of three colors that are next to each other on the color wheel.



255, 146, 145



255, 160, 105



219, 178, 84

Triad

The Triadic color harmony groups three colors that are evenly spaced from another and form a triangle on the color wheel.



255, 160, 105



0, 207, 173



174, 174, 255

Complementary

The Complementary color scheme is a pair of colors which are on the opposite of each other on the color wheel.



255, 160, 105



105, 200, 255

Split Complementary

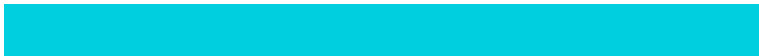
Split-complementary colors differ from the complementary color scheme. The scheme consists of three colors, the original color and two neighbors of the complement color.



73, 191, 255



255, 160, 105



0, 207, 223

Square

The Square scheme is like the rectangle color scheme, but the four colors are evenly spaced on the color wheel.



255, 160, 105



112, 202, 126



0, 202, 255



235, 155, 239

Rectangle

The Rectangle color scheme consists of four colors that form a rectangle on the color wheel.



255, 160, 105



188, 188, 86



0, 202, 255



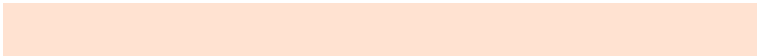
147, 180, 255

Sweetspot

The Sweet Spot groups the original color and five complimentary colors.



255, 160, 105



255, 226, 209



255, 105, 200



128, 110, 99



0, 0, 0



128, 128, 128

Same Dimension

The Same Dimension uses a secret algorithm to generate beautiful new colors.



255, 160, 105



255, 140, 74



255, 235, 105



128, 119, 115



191, 70, 0



64, 23, 0

Inverse Universe

The Inverse Universe completely reimagines the original color for something new.



105, 200, 255



74, 189, 255



105, 125, 255



115, 123, 128



0, 121, 191



0, 40, 64

Previews

White Background



This preview shows how the RGB color 255, 160, 105 looks on a white background.

Color Contrast Check

Large Text (above 18pt) WCAG AA × Fail

Any Text WCAG AA × Fail

Large Text (above 18pt) WCAG AAA × Fail

Any Text WCAG AAA × Fail

Black Background



This preview shows how the RGB color 255, 160, 105 looks on a black background.

Color Contrast Check

Large Text (above 18pt) WCAG AA ✓ Pass

Any Text WCAG AA ✓ Pass

Large Text (above 18pt) WCAG AAA ✓ Pass

Any Text WCAG AAA ✓ Pass

If you want to check with other color combinations, try the [Color Contrast Checker](#).

RGB 255, 160, 105 Background



This preview shows how black text looks on a background with the RGB color 255, 160, 105.



This preview shows how white text looks on a background with the RGB color 255, 160, 105.

Color Blindness Simulation

Color vision deficiency is a very complex topic, and I could not describe the different causes any better than Wikipedia does, so if you want to learn more, you should check out their [article about color blindness](#).

Dichromacy



Original Color
255, 160, 105

Protanopia
200, 184, 114

Deuteranopia
224, 175, 102



Tritanopia
255, 155, 165

Trichromacy



Original Color

255, 160, 105



Protanomaly

220, 175, 111



Deuteranomaly

235, 170, 103



Tritanomaly

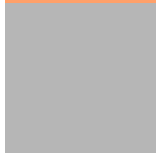
255, 157, 143

Monochromacy



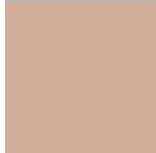
Original Color

255, 160, 105



Achromatopsia

182, 182, 182



Achromatomaly

209, 174, 154

CSS Examples

Text

The CSS property to change the color of the text to RGB 255, 160, 105 is called "color". The color property can be set on classes, ids or directly on the HTML element.

This example shows how text in the color `rgb(255, 160, 105)` looks like.

```
.text, #text, p{  
    color:rgb(255, 160, 105)  
}
```

If you want to add a text shadow in that color use the text-shadow property, you can generate a text shadow directly with our [CSS Text Shadow Generator](#).

Here you see how black text with a 4 pixel rgb(255, 160, 105) colored shadow looks like.

```
.shadow{ text-shadow: 4px 4px 2px rgb(255, 160, 105) }
```

Border

The CSS property to change the border of an element to RGB 255, 160, 105 is called "border". The border property can be set on classes, ids or directly on the HTML element.

This example shows the color as border, it can be applied via the CSS property "border" or "border-color".

```
.border, #border, table{ border:4px solid rgb(255, 160, 105) }
```

If only the border color should be changed use the property `border-color`.

```
.border{ border-color:rgb(255, 160, 105) }
```

If you want to add a box shadow in that color use:

Here you see how a box with a 4 pixel `rgb(255, 160, 105)` colored shadow looks like.

```
.boxshadow{ -moz-box-shadow:4px 4px 4px  
4px rgb(255, 160, 105); -webkit-box-  
shadow:4px 4px 4px 4px rgb(255, 160, 105);  
box-shadow:4px 4px 4px 4px rgb(255, 160,  
105) }
```

Background

The CSS property to change the background color of an element to RGB 255, 160, 105 is called "background". The background property can be set on classes, ids or directly on the HTML element.

```
.background, #background, body{  
background: rgb(255, 160, 105) }
```

If only the background color should be changed can be used:

```
.background{ background-color: rgb(255,  
160, 105) }
```

This example shows the color as background, it is applied via the CSS property "background".

To optimize and compress your CSS code, you can use our [online CSS compressor and optimizer](#) based on csstidy. If you want to create a linear or radial gradient as background or border, check our [CSS Gradient Generator](#).

Hey! You found this booklet interesting? Support Converting Colors with the new Membership Option!

The pro membership hides all ads, plus gives you double the colors in the color bucket, and more awesome pro features!

[Learn more, Memberships starting at \\$2.50/m!](#)

**Follow me
on Twitter!**

@ConvertingColor