

Converting Colors

RGB(255, 169, 123)

Have a look what the booklet for
RGB(255, 169, 123) contains.

RGB(255, 169, 123)	3
<i>Conversions</i>	4
<i>Details</i>	6
<i>Harmonies</i>	11
<i>Previews</i>	23
<i>Color Blindness Simulation</i>	26
<i>CSS Examples</i>	29

Color

RGB(255, 169, 123)

Conversions

Conversions Part 1

Format	Color
Hex	FFA97B
RGB	255, 169, 123
RGB Percent	100%, 66%, 48%
CMY	0.0000, 0.3373, 0.5176
CMYK	0.00, 0.34, 0.52, 0.00
HSL	21°, 100%, 74%
HSV	21°, 52%, 100%
XYZ	59.0031, 51.0660, 25.4858
YIQ	189.4700, 66.0220, 3.9260

Conversions

Conversions Part 2

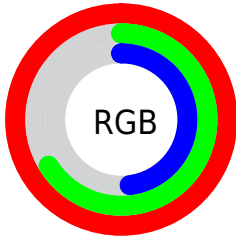
Format	Color
R _Y B	255, 194, 123
Decimal	16755067
CIE Lab	76.72, 26.88, 36.60
CIE LCh	77, 45.413, 53.710
Yxy	51.0660, 0.4353, 0.3767
Android (android.graphics.Color)	4294945147 (0xFFFFA97B)
YUV	189.4700, -32.7697, 57.4698
Hunter-Lab	71.4605, 22.3271, 28.8770

Details

The RGB color **255, 169, 123** is a light color, and the websafe version is hex **FF9966**. A complement of this color would be **123, 209, 255**, and the grayscale version is **190, 190, 190**.

A 20% lighter version of the original color is **255, 225, 176**, and **195, 116, 73** is the 20% darker color. If you saturate the color by 10%, you get **255, 152, 98**, and if you desaturate by 10%, it is **255, 186, 149**.

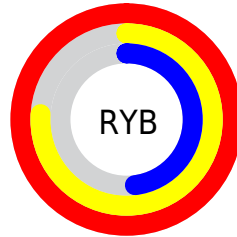
Distribution



Red (100%)

Green (66%)

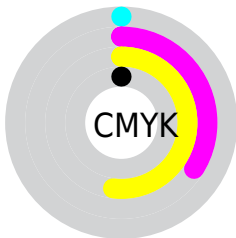
Blue (48%)



Red (100%)

Yellow (76%)

Blue (48%)

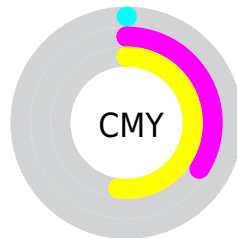


Cyan (0%)

Magenta (34%)

Yellow (52%)

Black (0%)



Cyan (0%)

Magenta (34%)

Yellow (52%)

Brightness & Saturation Gradients

These gradients show how the RGB color 255, 169, 123 changes by changing the brightness by 10 percent. The first figure shows a shift by +10% for each color and the second figure -10%.

Similar to the brightness gradients but the following saturation gradients show a change of the RGB color 255, 169, 123 by changing the saturation by 10% instead.

 255, 169, 123

 255, 169, 123

255, 255, 255

 225, 142, 98

 255, 225, 176

 195, 116, 73


 255, 253, 204

 166, 91, 50

 255, 255, 232

 137, 67, 27

 109, 44, 3

 81, 20, 0

 54, 0, 0

 26, 0, 1

 0, 0, 0

■ 255, 169, 123

■ 255, 169, 123

■ 255, 152, 98

■ 255, 186, 149

■ 255, 136, 72

■ 255, 202, 174

■ 255, 119, 47

■ 255, 219, 200

■ 255, 103, 21

■ 255, 235, 225

■ 255, 89, 0

■ 255, 252, 251

255, 255, 255

Harmonies

Analogous

The Analogous color harmony consists of three colors that are next to each other on the color wheel.



255, 158, 158



255, 169, 123



224, 184, 105

Triad

The Triadic color harmony groups three colors that are evenly spaced from another and form a triangle on the color wheel.



255, 169, 123



70, 211, 179



180, 182, 255

Complementary

The Complementary color scheme is a pair of colors which are on the opposite of each other on the color wheel.



255, 169, 123



123, 209, 255

Split Complementary

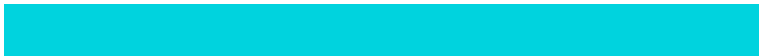
Split-complementary colors differ from the complementary color scheme. The scheme consists of three colors, the original color and two neighbors of the complement color.



106, 196, 255



255, 169, 123



0, 211, 222

Square

The Square scheme is like the rectangle color scheme, but the four colors are evenly spaced on the color wheel.



255, 169, 123



133, 206, 138



0, 206, 255



234, 166, 240

Rectangle

The Rectangle color scheme consists of four colors that form a rectangle on the color wheel.



255, 169, 123



197, 193, 106



0, 206, 255



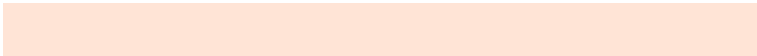
158, 187, 255

Sweetspot

The Sweet Spot groups the original color and five complimentary colors.



255, 169, 123



255, 228, 214



255, 123, 211



128, 112, 103



0, 0, 0



128, 128, 128

Same Dimension

The Same Dimension uses a secret algorithm to generate beautiful new colors.



255, 169, 123



255, 152, 97



255, 233, 123



128, 119, 115



191, 67, 0



64, 22, 0

Inverse Universe

The Inverse Universe completely reimagines the original color for something new.



123, 209, 255



97, 200, 255



123, 145, 255



115, 123, 128



0, 125, 191



0, 42, 64

Previews

White Background



This preview shows how the RGB color 255, 169, 123 looks on a white background.

Color Contrast Check

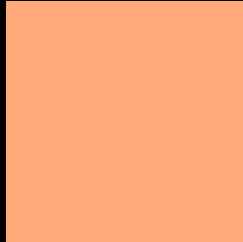
Large Text (above 18pt) WCAG AA × Fail

Any Text WCAG AA × Fail

Large Text (above 18pt) WCAG AAA × Fail

Any Text WCAG AAA × Fail

Black Background



This preview shows how the RGB color 255, 169, 123 looks on a black background.

Color Contrast Check

Large Text (above 18pt) WCAG AA ✓ Pass

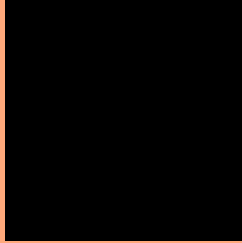
Any Text WCAG AA ✓ Pass

Large Text (above 18pt) WCAG AAA ✓ Pass

Any Text WCAG AAA ✓ Pass

If you want to check with other color combinations, try the [Color Contrast Checker](#).

RGB 255, 169, 123 Background



This preview shows how black text looks on a background with the RGB color 255, 169, 123.

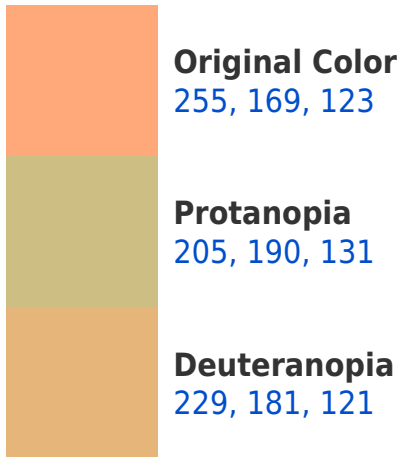



This preview shows how white text looks on a background with the RGB color 255, 169, 123.

Color Blindness Simulation

Color vision deficiency is a very complex topic, and I could not describe the different causes any better than Wikipedia does, so if you want to learn more, you should check out their [article about color blindness](#).

Dichromacy





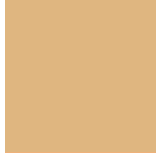
Tritanopia
255, 164, 176

Trichromacy



Original Color

255, 169, 123



Protanomaly

223, 182, 128



Deuteranomaly

238, 177, 122



Tritanomaly

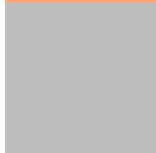
255, 166, 157

Monochromacy



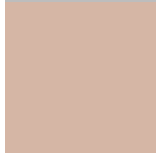
Original Color

255, 169, 123



Achromatopsia

189, 189, 189



Achromatomaly

213, 182, 165

CSS Examples

Text

The CSS property to change the color of the text to RGB 255, 169, 123 is called "color". The color property can be set on classes, ids or directly on the HTML element.

This example shows how text in the color `rgb(255, 169, 123)` looks like.

```
.text, #text, p{  
    color:rgb(255, 169, 123)  
}
```

If you want to add a text shadow in that color use the text-shadow property, you can generate a text shadow directly with our [CSS Text Shadow Generator](#).

Here you see how black text with a 4 pixel rgb(255, 169, 123) colored shadow looks like.

```
.shadow{ text-shadow: 4px 4px 2px rgb(255, 169, 123) }
```

Border

The CSS property to change the border of an element to RGB 255, 169, 123 is called "border". The border property can be set on classes, ids or directly on the HTML element.

This example shows the color as border, it can be applied via the CSS property "border" or "border-color".

```
.border, #border, table{ border:4px solid rgb(255, 169, 123) }
```

If only the border color should be changed use the property `border-color`.

```
.border{ border-color:rgb(255, 169, 123) }
```

If you want to add a box shadow in that color use:

Here you see how a box with a 4 pixel `rgb(255, 169, 123)` colored shadow looks like.

```
.boxshadow{ -moz-box-shadow:4px 4px 4px  
4px rgb(255, 169, 123); -webkit-box-  
shadow:4px 4px 4px 4px rgb(255, 169, 123);  
box-shadow:4px 4px 4px 4px rgb(255, 169,  
123) }
```

Background

The CSS property to change the background color of an element to RGB 255, 169, 123 is called "background". The background property can be set on classes, ids or directly on the HTML element.

```
.background, #background, body{  
background: rgb(255, 169, 123) }
```

If only the background color should be changed can be used:

```
.background{ background-color: rgb(255,  
169, 123) }
```

This example shows the color as background, it is applied via the CSS property "background".

To optimize and compress your CSS code, you can use our [online CSS compressor and optimizer](#) based on csstidy. If you want to create a linear or radial gradient as background or border, check our [CSS Gradient Generator](#).

Hey! You found this booklet interesting? Support Converting Colors with the new Membership Option!

The pro membership hides all ads, plus gives you double the colors in the color bucket, and more awesome pro features!

[Learn more, Memberships starting at \\$2.50/m!](#)

**Follow me
on Twitter!**

@ConvertingColor