

Converting Colors

RGB(255, 170, 138)

Have a look what the booklet for
RGB(255, 170, 138) contains.

RGB(255, 170, 138)	3
<i>Conversions</i>	4
<i>Details</i>	6
<i>Harmonies</i>	11
<i>Previews</i>	23
<i>Color Blindness Simulation</i>	26
<i>CSS Examples</i>	29

Color

RGB(255, 170, 138)

Conversions

Conversions Part 1

Format	Color
Hex	FFAA8A
RGB	255, 170, 138
RGB Percent	100%, 67%, 54%
CMY	0.0000, 0.3333, 0.4588
CMYK	0.00, 0.33, 0.46, 0.00
HSL	16°, 100%, 77%
HSV	16°, 46%, 100%
XYZ	60.2022, 51.8444, 30.8787
YIQ	191.7670, 60.9320, 8.0680

Conversions

Conversions Part 2

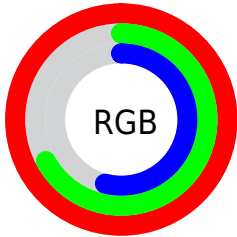
Format	Color
R _Y B	255, 182, 138
Decimal	16755338
CIE Lab	77.19, 27.73, 29.27
CIE LCh	77, 40.317, 46.548
Yxy	51.8444, 0.4212, 0.3627
Android (android.graphics.Color)	4294945418 (0xFFFFAA8A)
YUV	191.7670, -26.5071, 55.4553
Hunter-Lab	72.0031, 23.2395, 24.9755

Details

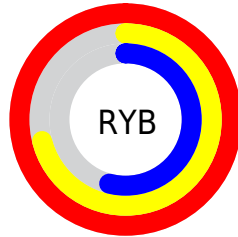
The RGB color **255, 170, 138** is a light color, and the websafe version is hex **FF9966**. A complement of this color would be **138, 223, 255**, and the grayscale version is **192, 192, 192**.

A 20% lighter version of the original color is **255, 226, 192**, and **195, 117, 88** is the 20% darker color. If you saturate the color by 10%, you get **255, 151, 113**, and if you desaturate by 10%, it is **255, 189, 163**.

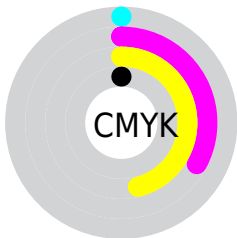
Distribution



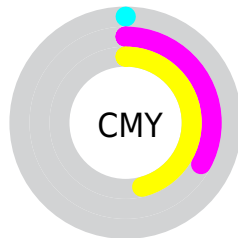
- Red (100%)
- Green (67%)
- Blue (54%)



- Red (100%)
- Yellow (71%)
- Blue (54%)



- Cyan (0%)
- Magenta (33%)
- Yellow (46%)
- Black (0%)



- Cyan (0%)
- Magenta (33%)
- Yellow (46%)

Brightness & Saturation Gradients

These gradients show how the RGB color 255, 170, 138 changes by changing the brightness by 10 percent. The first figure shows a shift by +10% for each color and the second figure -10%.

Similar to the brightness gradients but the following saturation gradients show a change of the RGB color 255, 170, 138 by changing the saturation by 10% instead.

 255, 170, 138

 255, 170, 138

255, 255, 255

 225, 143, 112

 255, 226, 192

 195, 117, 88

 255, 255, 220

 166, 92, 64

 255, 255, 248

 138, 68, 41

 110, 44, 20

 83, 20, 0

 56, 0, 0

 29, 0, 1

 0, 0, 0

■ 255, 170, 138

■ 255, 170, 138

■ 255, 151, 113

■ 255, 189, 163

■ 255, 133, 87

■ 255, 207, 189

■ 255, 114, 62

■ 255, 226, 215

■ 255, 96, 36

■ 255, 244, 240

■ 255, 77, 11

255, 255, 255

■ 255, 70, 0

Harmonies

Analogous

The Analogous color harmony consists of three colors that are next to each other on the color wheel.



255, 162, 171



255, 170, 138



230, 183, 118

Triad

The Triadic color harmony groups three colors that are evenly spaced from another and form a triangle on the color wheel.



255, 170, 138



105, 210, 172



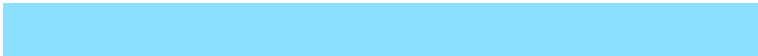
170, 187, 255

Complementary

The Complementary color scheme is a pair of colors which are on the opposite of each other on the color wheel.



255, 170, 138



138, 223, 255

Split Complementary

Split-complementary colors differ from the complementary color scheme. The scheme consists of three colors, the original color and two neighbors of the complement color.



108, 199, 255



255, 170, 138



53, 211, 211

Square

The Square scheme is like the rectangle color scheme, but the four colors are evenly spaced on the color wheel.



255, 170, 138



152, 204, 138



45, 207, 244



221, 174, 242

Rectangle

The Rectangle color scheme consists of four colors that form a rectangle on the color wheel.



255, 170, 138



207, 191, 116



45, 207, 244



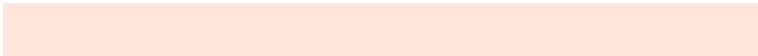
150, 192, 255

Sweetspot

The Sweet Spot groups the original color and five complimentary colors.



255, 170, 138



255, 229, 219



255, 138, 224



128, 112, 106



0, 0, 0



128, 128, 128

Same Dimension

The Same Dimension uses a secret algorithm to generate beautiful new colors.



255, 170, 138



255, 153, 115



255, 228, 138



128, 118, 115



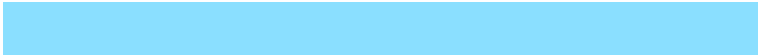
191, 52, 0



64, 17, 0

Inverse Universe

The Inverse Universe completely reimagines the original color for something new.



138, 223, 255



115, 217, 255



138, 165, 255



115, 124, 128



0, 139, 191



0, 46, 64

Previews

White Background



This preview shows how the RGB color 255, 170, 138 looks on a white background.

Color Contrast Check

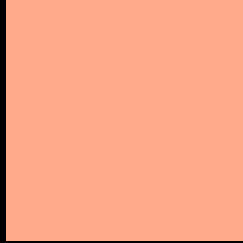
Large Text (above 18pt) WCAG AA × Fail

Any Text WCAG AA × Fail

Large Text (above 18pt) WCAG AAA × Fail

Any Text WCAG AAA × Fail

Black Background



This preview shows how the RGB color 255, 170, 138 looks on a black background.

Color Contrast Check

Large Text (above 18pt) WCAG AA ✓ Pass

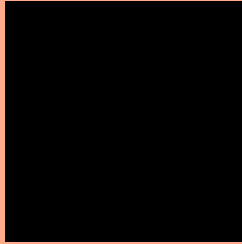
Any Text WCAG AA ✓ Pass

Large Text (above 18pt) WCAG AAA ✓ Pass

Any Text WCAG AAA ✓ Pass

If you want to check with other color combinations, try the [Color Contrast Checker](#).

RGB 255, 170, 138 Background



This preview shows how black text looks on a background with the RGB color 255, 170, 138.

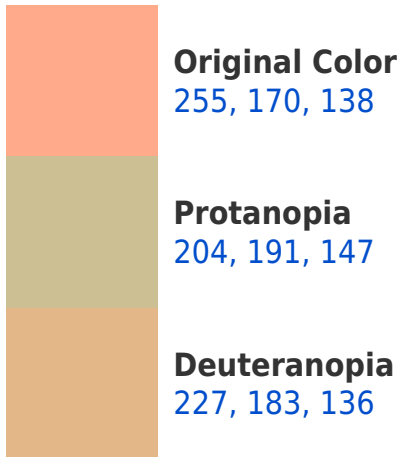



This preview shows how white text looks on a background with the RGB color 255, 170, 138.

Color Blindness Simulation

Color vision deficiency is a very complex topic, and I could not describe the different causes any better than Wikipedia does, so if you want to learn more, you should check out their [article about color blindness](#).

Dichromacy





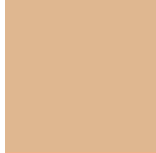
Tritanopia
255, 166, 178

Trichromacy



Original Color

255, 170, 138



Protanomaly

223, 183, 144



Deuteranomaly

237, 178, 137



Tritanomaly

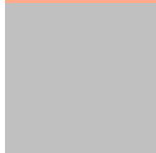
255, 167, 163

Monochromacy



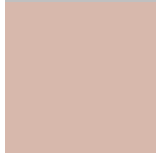
Original Color

255, 170, 138



Achromatopsia

192, 192, 192



Achromatomaly

215, 184, 172

CSS Examples

Text

The CSS property to change the color of the text to RGB 255, 170, 138 is called "color". The color property can be set on classes, ids or directly on the HTML element.

This example shows how text in the color `rgb(255, 170, 138)` looks like.

```
.text, #text, p{  
    color:rgb(255, 170, 138)  
}
```

If you want to add a text shadow in that color use the text-shadow property, you can generate a text shadow directly with our [CSS Text Shadow Generator](#).

Here you see how black text with a 4 pixel rgb(255, 170, 138) colored shadow looks like.

```
.shadow{ text-shadow: 4px 4px 2px rgb(255, 170, 138) }
```

Border

The CSS property to change the border of an element to RGB 255, 170, 138 is called "border". The border property can be set on classes, ids or directly on the HTML element.

This example shows the color as border, it can be applied via the CSS property "border" or "border-color".

```
.border, #border, table{ border:4px solid rgb(255, 170, 138) }
```

If only the border color should be changed use the property `border-color`.

```
.border{ border-color:rgb(255, 170, 138) }
```

If you want to add a box shadow in that color use:

Here you see how a box with a 4 pixel `rgb(255, 170, 138)` colored shadow looks like.

```
.boxshadow{ -moz-box-shadow:4px 4px 4px  
4px rgb(255, 170, 138); -webkit-box-  
shadow:4px 4px 4px 4px rgb(255, 170, 138);  
box-shadow:4px 4px 4px 4px rgb(255, 170,  
138) }
```

Background

The CSS property to change the background color of an element to RGB 255, 170, 138 is called "background". The background property can be set on classes, ids or directly on the HTML element.

```
.background, #background, body{  
background: rgb(255, 170, 138) }
```

If only the background color should be changed can be used:

```
.background{ background-color: rgb(255,  
170, 138) }
```

This example shows the color as background, it is applied via the CSS property "background".

To optimize and compress your CSS code, you can use our [online CSS compressor and optimizer](#) based on csstidy. If you want to create a linear or radial gradient as background or border, check our [CSS Gradient Generator](#).

Hey! You found this booklet interesting? Support Converting Colors with the new Membership Option!

The pro membership hides all ads, plus gives you double the colors in the color bucket, and more awesome pro features!

[Learn more, Memberships starting at \\$2.50/m!](#)

**Follow me
on Twitter!**

@ConvertingColor