

Converting Colors

RGB(255, 181, 144)

Have a look what the booklet for
RGB(255, 181, 144) contains.

RGB(255, 181, 144)	3
<i>Conversions</i>	4
<i>Details</i>	6
<i>Harmonies</i>	11
<i>Previews</i>	23
<i>Color Blindness Simulation</i>	26
<i>CSS Examples</i>	29

Color

RGB(255, 181, 144)

Conversions

Conversions Part 1

Format	Color
Hex	FFB590
RGB	255, 181, 144
RGB Percent	100%, 71%, 56%
CMY	0.0000, 0.2902, 0.4353
CMYK	0.00, 0.29, 0.44, 0.00
HSL	20°, 100%, 78%
HSV	20°, 44%, 100%
XYZ	62.7979, 56.3214, 33.9469
YIQ	198.9080, 55.9810, 4.1810

Conversions

Conversions Part 2

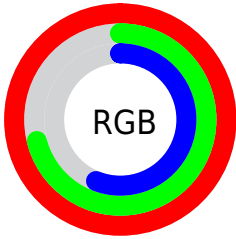
Format	Color
RYB	255, 200, 144
Decimal	16758160
CIELab	79.80, 22.57, 29.55
CIELCh	80, 37.183, 52.630
Yxy	56.3214, 0.4103, 0.3680
Android (android.graphics.Color)	4294948240 (0xFFFFB590)
YUV	198.9080, -27.0696, 49.1927
Hunter-Lab	75.0476, 18.0311, 25.7142

Details

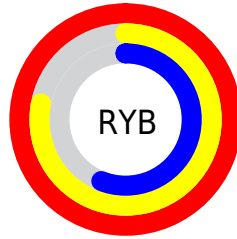
The RGB color **255, 181, 144** is a light color, and the websafe version is hex **FFCC99**. A complement of this color would be **144, 218, 255**, and the grayscale version is **199, 199, 199**.

A 20% lighter version of the original color is **255, 237, 198**, and **196, 128, 93** is the 20% darker color. If you saturate the color by 10%, you get **255, 164, 119**, and if you desaturate by 10%, it is **255, 198, 170**.

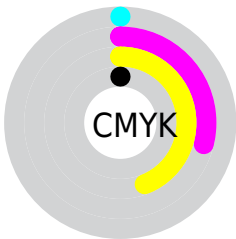
Distribution



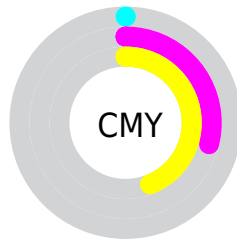
- Red (100%)
- Green (71%)
- Blue (56%)



- Red (100%)
- Yellow (78%)
- Blue (56%)



- Cyan (0%)
- Magenta (29%)
- Yellow (44%)
- Black (0%)



- Cyan (0%)
- Magenta (29%)
- Yellow (44%)

Brightness & Saturation Gradients

These gradients show how the RGB color 255, 181, 144 changes by changing the brightness by 10 percent. The first figure shows a shift by +10% for each color and the second figure -10%.

Similar to the brightness gradients but the following saturation gradients show a change of the RGB color 255, 181, 144 by changing the saturation by 10% instead.

 255, 181, 144

 255, 181, 144

255, 255, 255

 225, 154, 118

 255, 237, 198


 196, 128, 93

 255, 255, 226

 167, 102, 69

255, 255, 255

 139, 78, 46

 111, 55, 24

 84, 32, 0

 58, 10, 0

 35, 0, 1

 0, 0, 0

■ 255, 181, 144

■ 255, 181, 144

■ 255, 164, 119

■ 255, 198, 170

■ 255, 147, 93

■ 255, 215, 195

■ 255, 130, 67

■ 255, 232, 221

■ 255, 113, 42

■ 255, 249, 246

■ 255, 96, 16

255, 255, 255

■ 255, 85, 0

Harmonies

Analogous

The Analogous color harmony consists of three colors that are next to each other on the color wheel.



255, 173, 173



255, 181, 144



229, 193, 129

Triad

The Triadic color harmony groups three colors that are evenly spaced from another and form a triangle on the color wheel.



255, 181, 144



113, 216, 188



190, 192, 255

Complementary

The Complementary color scheme is a pair of colors which are on the opposite of each other on the color wheel.



255, 181, 144



144, 218, 255

Split Complementary

Split-complementary colors differ from the complementary color scheme. The scheme consists of three colors, the original color and two neighbors of the complement color.



137, 204, 255



255, 181, 144



79, 216, 223

Square

The Square scheme is like the rectangle color scheme, but the four colors are evenly spaced on the color wheel.



255, 181, 144



155, 212, 155



89, 212, 252



234, 180, 240

Rectangle

The Rectangle color scheme consists of four colors that form a rectangle on the color wheel.



255, 181, 144



207, 200, 129



89, 212, 252



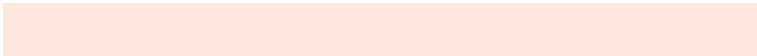
173, 196, 255

Sweetspot

The Sweet Spot groups the original color and five complimentary colors.



255, 181, 144



255, 233, 222



255, 144, 218



128, 114, 107



0, 0, 0



128, 128, 128

Same Dimension

The Same Dimension uses a secret algorithm to generate beautiful new colors.



255, 181, 144



255, 167, 122



255, 237, 144



128, 119, 115



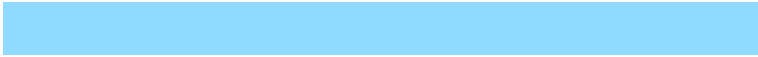
191, 64, 0



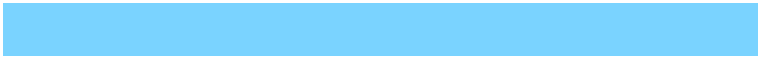
64, 21, 0

Inverse Universe

The Inverse Universe completely reimagines the original color for something new.



144, 218, 255



122, 211, 255



144, 163, 255



115, 123, 128



0, 127, 191



0, 42, 64

Previews

White Background



This preview shows how the RGB color 255, 181, 144 looks on a white background.

Color Contrast Check

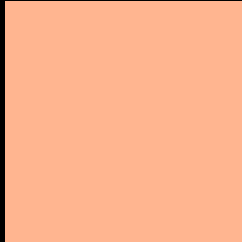
Large Text (above 18pt) WCAG AA × Fail

Any Text WCAG AA × Fail

Large Text (above 18pt) WCAG AAA × Fail

Any Text WCAG AAA × Fail

Black Background



This preview shows how the RGB color 255, 181, 144 looks on a black background.

Color Contrast Check

Large Text (above 18pt) WCAG AA ✓ Pass

Any Text WCAG AA ✓ Pass

Large Text (above 18pt) WCAG AAA ✓ Pass

Any Text WCAG AAA ✓ Pass

If you want to check with other color combinations, try the [Color Contrast Checker](#).

RGB 255, 181, 144 Background



This preview shows how black text looks on a background with the RGB color 255, 181, 144.



This preview shows how white text looks on a background with the RGB color 255, 181, 144.

Color Blindness Simulation

Color vision deficiency is a very complex topic, and I could not describe the different causes any better than Wikipedia does, so if you want to learn more, you should check out their [article about color blindness](#).

Dichromacy



Original Color
255, 181, 144

Protanopia
212, 198, 151

Deuteranopia
235, 190, 142



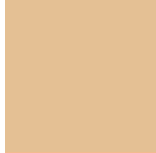
Tritanopia
255, 177, 189

Trichromacy



Original Color

255, 181, 144



Protanomaly

228, 192, 148



Deuteranomaly

242, 187, 143



Tritanomaly

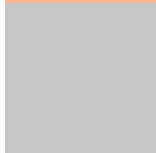
255, 178, 173

Monochromacy



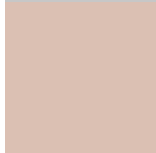
Original Color

255, 181, 144



Achromatopsia

199, 199, 199



Achromatomaly

219, 192, 179

CSS Examples

Text

The CSS property to change the color of the text to RGB 255, 181, 144 is called "color". The color property can be set on classes, ids or directly on the HTML element.

This example shows how text in the color `rgb(255, 181, 144)` looks like.

```
.text, #text, p{  
    color:rgb(255, 181, 144)  
}
```

If you want to add a text shadow in that color use the text-shadow property, you can generate a text shadow directly with our [CSS Text Shadow Generator](#).

Here you see how black text with a 4 pixel rgb(255, 181, 144) colored shadow looks like.

```
.shadow{ text-shadow: 4px 4px 2px rgb(255, 181, 144) }
```

Border

The CSS property to change the border of an element to RGB 255, 181, 144 is called "border". The border property can be set on classes, ids or directly on the HTML element.

This example shows the color as border, it can be applied via the CSS property "border" or "border-color".

```
.border, #border, table{ border:4px solid rgb(255, 181, 144) }
```

If only the border color should be changed use the property `border-color`.

```
.border{ border-color:rgb(255, 181, 144) }
```

If you want to add a box shadow in that color use:

Here you see how a box with a 4 pixel `rgb(255, 181, 144)` colored shadow looks like.

```
.boxshadow{ -moz-box-shadow:4px 4px 4px 4px rgb(255, 181, 144); -webkit-box-shadow:4px 4px 4px 4px rgb(255, 181, 144); box-shadow:4px 4px 4px 4px rgb(255, 181, 144) }
```

Background

The CSS property to change the background color of an element to RGB 255, 181, 144 is called "background". The background property can be set on classes, ids or directly on the HTML element.

```
.background, #background, body{  
background: rgb(255, 181, 144) }
```

If only the background color should be changed can be used:

```
.background{ background-color: rgb(255,  
181, 144) }
```

This example shows the color as background, it is applied via the CSS property "background".

To optimize and compress your CSS code, you can use our [online CSS compressor and optimizer](#) based on csstidy. If you want to create a linear or radial gradient as background or border, check our [CSS Gradient Generator](#).

Hey! You found this booklet interesting? Support Converting Colors with the new Membership Option!

The pro membership hides all ads, plus gives you double the colors in the color bucket, and more awesome pro features!

[Learn more, Memberships starting at \\$2.50/m!](#)

**Follow me
on Twitter!**

@ConvertingColor