

Converting Colors

RGB(255, 183, 173)

Have a look what the booklet for
RGB(255, 183, 173) contains.

RGB(255, 183, 173)	3
<i>Conversions</i>	4
<i>Details</i>	6
<i>Harmonies</i>	11
<i>Previews</i>	23
<i>Color Blindness Simulation</i>	26
<i>CSS Examples</i>	29

Color

RGB(255, 183, 173)

Conversions

Conversions Part 1

Format	Color
Hex	FFB7AD
RGB	255, 183, 173
RGB Percent	100%, 72%, 68%
CMY	0.0000, 0.2824, 0.3216
CMYK	0.00, 0.28, 0.32, 0.00
HSL	7°, 100%, 84%
HSV	7°, 32%, 100%
XYZ	65.7163, 58.1441, 47.2945
YIQ	203.3880, 46.1220, 12.1540

Conversions

Conversions Part 2

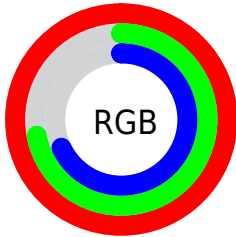
Format	Color
R _Y B	255, 184, 173
Decimal	16758701
CIE Lab	80.82, 24.81, 15.46
CIE LCh	81, 29.231, 31.939
Yxy	58.1441, 0.3840, 0.3397
Android (android.graphics.Color)	4294948781 (0xFFFFB7AD)
YUV	203.3880, -14.9813, 45.2637
Hunter-Lab	76.2523, 20.3947, 16.6028

Details

The RGB color **255, 183, 173** is a light color, and the websafe version is hex **FFCCCC**. A complement of this color would be **173, 245, 255**, and the grayscale version is **204, 204, 204**.

A 20% lighter version of the original color is **255, 239, 228**, and **197, 130, 121** is the 20% darker color. If you saturate the color by 10%, you get **255, 161, 147**, and if you desaturate by 10%, it is **255, 205, 199**.

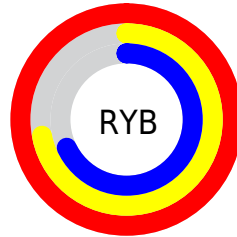
Distribution



Red (100%)

Green (72%)

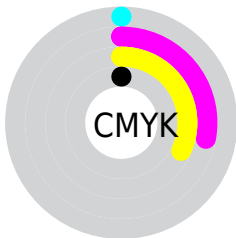
Blue (68%)



Red (100%)

Yellow (72%)

Blue (68%)

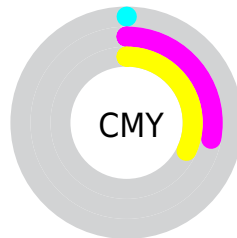


Cyan (0%)

Magenta (28%)

Yellow (32%)

Black (0%)



Cyan (0%)

Magenta (28%)

Yellow (32%)

Brightness & Saturation Gradients

These gradients show how the RGB color 255, 183, 173 changes by changing the brightness by 10 percent. The first figure shows a shift by +10% for each color and the second figure -10%.

Similar to the brightness gradients but the following saturation gradients show a change of the RGB color 255, 183, 173 by changing the saturation by 10% instead.

 255, 183, 173


255, 255, 255


 255, 239, 228

 255, 183, 173

 226, 156, 146

 197, 130, 121

 168, 104, 96

 141, 79, 72

 114, 56, 50

 87, 33, 29

 62, 9, 3

 40, 0, 1

 0, 0, 0

■ 255, 183, 173

■ 255, 183, 173

■ 255, 161, 147

■ 255, 205, 199

■ 255, 138, 122

■ 255, 228, 224

■ 255, 116, 97

■ 255, 250, 250

■ 255, 93, 71

255, 255, 255

■ 255, 71, 46

■ 255, 49, 20

■ 255, 31, 0

Harmonies

Analogous

The Analogous color harmony consists of three colors that are next to each other on the color wheel.



254, 181, 200



255, 183, 173



242, 190, 153

Triad

The Triadic color harmony groups three colors that are evenly spaced from another and form a triangle on the color wheel.



255, 183, 173



158, 213, 174



169, 203, 255

Complementary

The Complementary color scheme is a pair of colors which are on the opposite of each other on the color wheel.



255, 183, 173



173, 245, 255

Split Complementary

Split-complementary colors differ from the complementary color scheme. The scheme consists of three colors, the original color and two neighbors of the complement color.



134, 210, 248



255, 183, 173



131, 216, 201

Square

The Square scheme is like the rectangle color scheme, but the four colors are evenly spaced on the color wheel.



255, 183, 173



189, 208, 154



119, 215, 229



207, 193, 247

Rectangle

The Rectangle color scheme consists of four colors that form a rectangle on the color wheel.



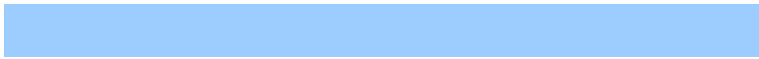
255, 183, 173



228, 196, 147



119, 215, 229



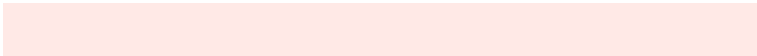
157, 205, 254

Sweetspot

The Sweet Spot groups the original color and five complimentary colors.



255, 183, 173



255, 233, 230



255, 173, 245



128, 114, 112



0, 0, 0



128, 128, 128

Same Dimension

The Same Dimension uses a secret algorithm to generate beautiful new colors.



255, 183, 173



255, 168, 156



255, 224, 173



128, 116, 115



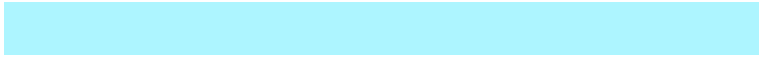
191, 23, 0



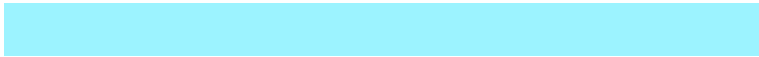
64, 8, 0

Inverse Universe

The Inverse Universe completely reimagines the original color for something new.



173, 245, 255



156, 243, 255



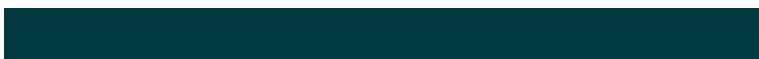
173, 204, 255



115, 126, 128



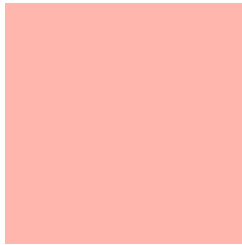
0, 168, 191



0, 56, 64

Previews

White Background



This preview shows how the RGB color 255, 183, 173 looks on a white background.

Color Contrast Check

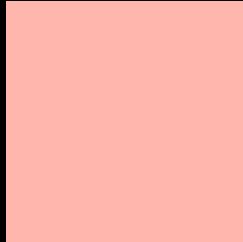
Large Text (above 18pt) WCAG AA × Fail

Any Text WCAG AA × Fail

Large Text (above 18pt) WCAG AAA × Fail

Any Text WCAG AAA × Fail

Black Background



This preview shows how the RGB color 255, 183, 173 looks on a black background.

Color Contrast Check

Large Text (above 18pt) WCAG AA ✓ Pass

Any Text WCAG AA ✓ Pass

Large Text (above 18pt) WCAG AAA ✓ Pass

Any Text WCAG AAA ✓ Pass

If you want to check with other color combinations, try the [Color Contrast Checker](#).

RGB 255, 183, 173 Background



This preview shows how black text looks on a background with the RGB color 255, 183, 173.



This preview shows how white text looks on a background with the RGB color 255, 183, 173.

Color Blindness Simulation

Color vision deficiency is a very complex topic, and I could not describe the different causes any better than Wikipedia does, so if you want to learn more, you should check out their [article about color blindness](#).


Dichromacy



Original Color
255, 183, 173

Protanopia
209, 200, 182

Deuteranopia
231, 193, 171



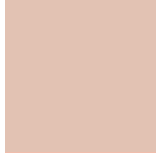
Tritanopia
255, 181, 194

Trichromacy



Original Color

255, 183, 173



Protanomaly

226, 194, 179



Deuteranomaly

240, 189, 172



Tritanomaly

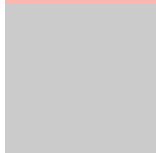
255, 182, 186

Monochromacy



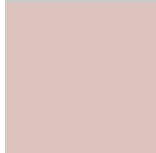
Original Color

255, 183, 173



Achromatopsia

203, 203, 203



Achromatomaly

222, 196, 192

CSS Examples

Text

The CSS property to change the color of the text to RGB 255, 183, 173 is called "color". The color property can be set on classes, ids or directly on the HTML element.

This example shows how text in the color `rgb(255, 183, 173)` looks like.

```
.text, #text, p{  
    color:rgb(255, 183, 173)  
}
```

If you want to add a text shadow in that color use the text-shadow property, you can generate a text shadow directly with our [CSS Text Shadow Generator](#).

Here you see how black text with a 4 pixel rgb(255, 183, 173) colored shadow looks like.

```
.shadow{ text-shadow: 4px 4px 2px rgb(255, 183, 173) }
```

Border

The CSS property to change the border of an element to RGB 255, 183, 173 is called "border". The border property can be set on classes, ids or directly on the HTML element.

This example shows the color as border, it can be applied via the CSS property "border" or "border-color".

```
.border, #border, table{ border:4px solid rgb(255, 183, 173) }
```

If only the border color should be changed use the property `border-color`.

```
.border{ border-color:rgb(255, 183, 173) }
```

If you want to add a box shadow in that color use:

Here you see how a box with a 4 pixel `rgb(255, 183, 173)` colored shadow looks like.

```
.boxshadow{ -moz-box-shadow:4px 4px 4px  
4px rgb(255, 183, 173); -webkit-box-  
shadow:4px 4px 4px 4px rgb(255, 183, 173);  
box-shadow:4px 4px 4px 4px rgb(255, 183,  
173) }
```

Background

The CSS property to change the background color of an element to RGB 255, 183, 173 is called "background". The background property can be set on classes, ids or directly on the HTML element.

```
.background, #background, body{  
background: rgb(255, 183, 173) }
```

If only the background color should be changed can be used:

```
.background{ background-color: rgb(255,  
183, 173) }
```

This example shows the color as background, it is applied via the CSS property "background".

To optimize and compress your CSS code, you can use our [online CSS compressor and optimizer](#) based on csstidy. If you want to create a linear or radial gradient as background or border, check our [CSS Gradient Generator](#).

Hey! You found this booklet interesting? Support Converting Colors with the new Membership Option!

The pro membership hides all ads, plus gives you double the colors in the color bucket, and more awesome pro features!

[Learn more, Memberships starting at \\$2.50/m!](#)

**Follow me
on Twitter!**

@ConvertingColor