

Converting Colors

RGB(255, 184, 171)

Have a look what the booklet for
RGB(255, 184, 171) contains.

RGB(255, 184, 171)	3
<i>Conversions</i>	4
<i>Details</i>	6
<i>Harmonies</i>	11
<i>Previews</i>	23
<i>Color Blindness Simulation</i>	26
<i>CSS Examples</i>	29

Color

RGB(255, 184, 171)

Conversions

Conversions Part 1

Format	Color
Hex	FFB8AB
RGB	255, 184, 171
RGB Percent	100%, 72%, 67%
CMY	0.0000, 0.2784, 0.3294
CMYK	0.00, 0.28, 0.33, 0.00
HSL	9°, 100%, 84%
HSV	9°, 33%, 100%
XYZ	65.7312, 58.4813, 46.3517
YIQ	203.7470, 46.4890, 11.0090

Conversions

Conversions Part 2

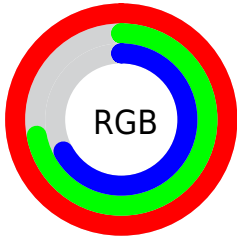
Format	Color
R _Y B	255, 186, 171
Decimal	16758955
CIE Lab	81.01, 24.03, 16.80
CIE LCh	81, 29.323, 34.952
Yxy	58.4813, 0.3854, 0.3429
Android (android.graphics.Color)	4294949035 (0xFFFFB8AB)
YUV	203.7470, -16.1443, 44.9489
Hunter-Lab	76.4730, 19.5990, 17.5944

Details

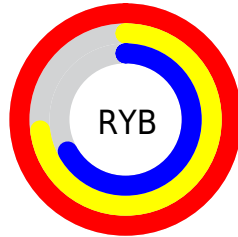
The RGB color **255, 184, 171** is a light color, and the websafe version is hex **FFCCCC**. A complement of this color would be **171, 242, 255**, and the grayscale version is **204, 204, 204**.

A 20% lighter version of the original color is **255, 240, 226**, and **197, 131, 119** is the 20% darker color. If you saturate the color by 10%, you get **255, 162, 146**, and if you desaturate by 10%, it is **255, 206, 196**.

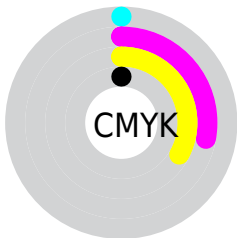
Distribution



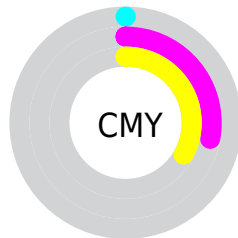
- Red (100%)
- Green (72%)
- Blue (67%)



- Red (100%)
- Yellow (73%)
- Blue (67%)



- Cyan (0%)
- Magenta (28%)
- Yellow (33%)
- Black (0%)



- Cyan (0%)
- Magenta (28%)
- Yellow (33%)

Brightness & Saturation Gradients

These gradients show how the RGB color 255, 184, 171 changes by changing the brightness by 10 percent. The first figure shows a shift by +10% for each color and the second figure -10%.


Similar to the brightness gradients but the following saturation gradients show a change of the RGB color 255, 184, 171 by changing the saturation by 10% instead.

 255, 184, 171


255, 255, 255


 255, 240, 226

 255, 184, 171

 226, 157, 144

 197, 131, 119

 168, 105, 94

 141, 80, 70

 113, 57, 48

 87, 34, 27

 62, 11, 1

 39, 0, 1

 0, 0, 0

■ 255, 184, 171

■ 255, 184, 171

■ 255, 162, 146

■ 255, 206, 196

■ 255, 141, 120

■ 255, 227, 222

■ 255, 119, 95

■ 255, 249, 248

■ 255, 98, 69

255, 255, 255

■ 255, 76, 44

■ 255, 55, 18

■ 255, 39, 0

Harmonies

Analogous

The Analogous color harmony consists of three colors that are next to each other on the color wheel.



255, 181, 198



255, 184, 171



241, 192, 152

Triad

The Triadic color harmony groups three colors that are evenly spaced from another and form a triangle on the color wheel.



255, 184, 171



155, 214, 177



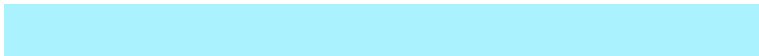
174, 202, 255

Complementary

The Complementary color scheme is a pair of colors which are on the opposite of each other on the color wheel.



255, 184, 171



171, 242, 255

Split Complementary

Split-complementary colors differ from the complementary color scheme. The scheme consists of three colors, the original color and two neighbors of the complement color.



138, 210, 250



255, 184, 171



129, 217, 205

Square

The Square scheme is like the rectangle color scheme, but the four colors are evenly spaced on the color wheel.



255, 184, 171



187, 209, 156



119, 215, 232



211, 193, 246

Rectangle

The Rectangle color scheme consists of four colors that form a rectangle on the color wheel.



255, 184, 171



226, 198, 147



119, 215, 232



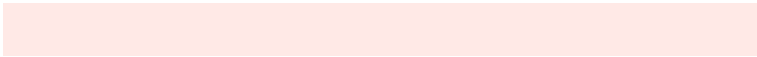
161, 205, 255

Sweetspot

The Sweet Spot groups the original color and five complimentary colors.



255, 184, 171



255, 233, 230



255, 171, 242



128, 115, 112



0, 0, 0



128, 128, 128

Same Dimension

The Same Dimension uses a secret algorithm to generate beautiful new colors.



255, 184, 171



255, 169, 153



255, 226, 171



128, 117, 115



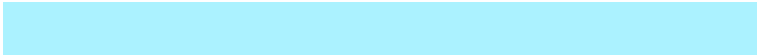
191, 30, 0



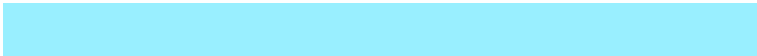
64, 10, 0

Inverse Universe

The Inverse Universe completely reimagines the original color for something new.



171, 242, 255



153, 239, 255



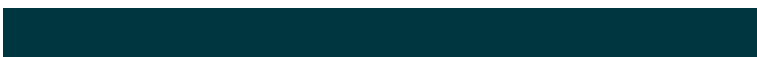
171, 200, 255



115, 126, 128



0, 162, 191



0, 54, 64

Previews

White Background



This preview shows how the RGB color 255, 184, 171 looks on a white background.

Color Contrast Check

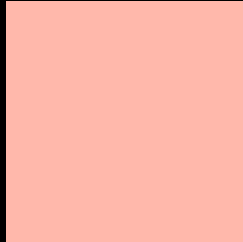
Large Text (above 18pt) WCAG AA × Fail

Any Text WCAG AA × Fail

Large Text (above 18pt) WCAG AAA × Fail

Any Text WCAG AAA × Fail

Black Background



This preview shows how the RGB color 255, 184, 171 looks on a black background.

Color Contrast Check

Large Text (above 18pt) WCAG AA ✓ Pass

Any Text WCAG AA ✓ Pass

Large Text (above 18pt) WCAG AAA ✓ Pass

Any Text WCAG AAA ✓ Pass

If you want to check with other color combinations, try the [Color Contrast Checker](#).

RGB 255, 184, 171 Background



This preview shows how black text looks on a background with the RGB color 255, 184, 171.

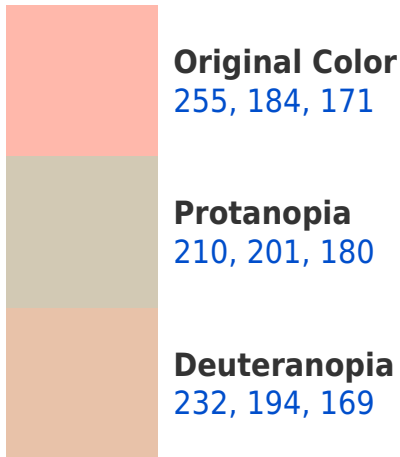



This preview shows how white text looks on a background with the RGB color 255, 184, 171.

Color Blindness Simulation

Color vision deficiency is a very complex topic, and I could not describe the different causes any better than Wikipedia does, so if you want to learn more, you should check out their [article about color blindness](#).

Dichromacy





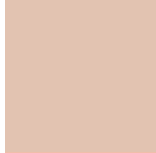
Tritanopia
255, 182, 195

Trichromacy



Original Color

255, 184, 171



Protanomaly

226, 195, 177



Deuteranomaly

240, 190, 170



Tritanomaly

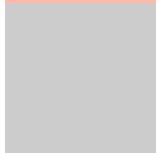
255, 183, 186

Monochromacy



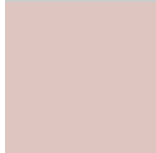
Original Color

255, 184, 171



Achromatopsia

204, 204, 204



Achromatomaly

223, 197, 192

CSS Examples

Text

The CSS property to change the color of the text to RGB 255, 184, 171 is called "color". The color property can be set on classes, ids or directly on the HTML element.

This example shows how text in the color rgb(255, 184, 171) looks like.

```
.text, #text, p{  
    color:rgb(255, 184, 171)  
}
```

If you want to add a text shadow in that color use the text-shadow property, you can generate a text shadow directly with our [CSS Text Shadow Generator](#).

Here you see how black text with a 4 pixel rgb(255, 184, 171) colored shadow looks like.

```
.shadow{ text-shadow: 4px 4px 2px rgb(255, 184, 171) }
```

Border

The CSS property to change the border of an element to RGB 255, 184, 171 is called "border". The border property can be set on classes, ids or directly on the HTML element.

This example shows the color as border, it can be applied via the CSS property "border" or "border-color".

```
.border, #border, table{ border:4px solid rgb(255, 184, 171) }
```

If only the border color should be changed use the property `border-color`.

```
.border{ border-color:rgb(255, 184, 171) }
```

If you want to add a box shadow in that color use:

Here you see how a box with a 4 pixel `rgb(255, 184, 171)` colored shadow looks like.

```
.boxshadow{ -moz-box-shadow:4px 4px 4px  
4px rgb(255, 184, 171); -webkit-box-  
shadow:4px 4px 4px 4px rgb(255, 184, 171);  
box-shadow:4px 4px 4px 4px rgb(255, 184,  
171) }
```

Background

The CSS property to change the background color of an element to RGB 255, 184, 171 is called "background". The background property can be set on classes, ids or directly on the HTML element.

```
.background, #background, body{  
background: rgb(255, 184, 171) }
```

If only the background color should be changed can be used:

```
.background{ background-color: rgb(255,  
184, 171) }
```

This example shows the color as background, it is applied via the CSS property "background".

To optimize and compress your CSS code, you can use our [online CSS compressor and optimizer](#) based on csstidy. If you want to create a linear or radial gradient as background or border, check our [CSS Gradient Generator](#).

Hey! You found this booklet interesting? Support Converting Colors with the new Membership Option!

The pro membership hides all ads, plus gives you double the colors in the color bucket, and more awesome pro features!

[Learn more, Memberships starting at \\$2.50/m!](#)

**Follow me
on Twitter!**

@ConvertingColor