

Converting Colors

RGB(255, 185, 185)

Have a look what the booklet for
RGB(255, 185, 185) contains.

RGB(255, 185, 185)	3
<i>Conversions</i>	4
<i>Details</i>	6
<i>Harmonies</i>	11
<i>Previews</i>	23
<i>Color Blindness Simulation</i>	26
<i>CSS Examples</i>	29

Color

RGB(255, 185, 185)

Conversions

Conversions Part 1

Format	Color
Hex	FFB9B9
RGB	255, 185, 185
RGB Percent	100%, 73%, 73%
CMY	0.0000, 0.2745, 0.2745
CMYK	0.00, 0.27, 0.27, 0.00
HSL	0°, 100%, 86%
HSV	0°, 27%, 100%
XYZ	67.3459, 59.4607, 53.8265
YIQ	205.9300, 41.7200, 14.8400

Conversions

Conversions Part 2

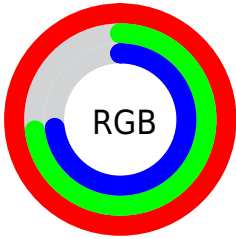
Format	Color
R _Y B	255, 185, 185
Decimal	16759225
CIE Lab	81.54, 25.30, 10.04
CIE LCh	82, 27.223, 21.641
Yxy	59.4607, 0.3728, 0.3292
Android (android.graphics.Color)	4294949305 (0xFFFFB9B9)
YUV	205.9300, -10.3185, 43.0344
Hunter-Lab	77.1108, 20.9520, 12.5907

Details

The RGB color **255, 185, 185** is a light color, and the websafe version is hex **FFCCCC**. A complement of this color would be **185, 255, 255**, and the grayscale version is **206, 206, 206**.

A 20% lighter version of the original color is **255, 241, 241**, and **197, 131, 132** is the 20% darker color. If you saturate the color by 10%, you get **255, 160, 160**, and if you desaturate by 10%, it is **255, 211, 211**.

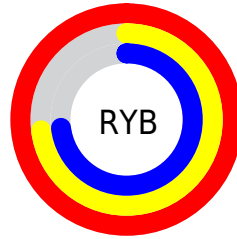
Distribution



Red (100%)

Green (73%)

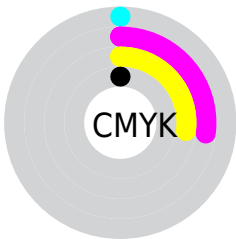
Blue (73%)



Red (100%)

Yellow (73%)

Blue (73%)

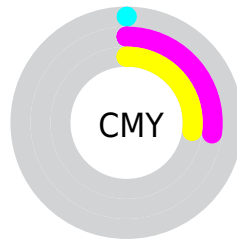


Cyan (0%)

Magenta (27%)

Yellow (27%)

Black (0%)



Cyan (0%)

Magenta (27%)

Yellow (27%)

Brightness & Saturation Gradients


These gradients show how the RGB color 255, 185, 185 changes by changing the brightness by 10 percent. The first figure shows a shift by +10% for each color and the second figure -10%.

Similar to the brightness gradients but the following saturation gradients show a change of the RGB color 255, 185, 185 by changing the saturation by 10% instead.

 255, 185, 185

 255, 185, 185

255, 255, 255

 226, 158, 158


 255, 241, 241


 197, 131, 132

 169, 106, 107

 141, 81, 83

 114, 57, 60

 88, 34, 38


 63, 11, 17

 41, 0, 0

 0, 0, 0

 255, 185, 185

 255, 185, 185

 255, 160, 160

 255, 211, 211

 255, 134, 134

 255, 236, 236

 255, 108, 108

255, 255, 255

 255, 83, 83

 255, 57, 57

 255, 32, 32

 255, 7, 7

 255, 0, 0

Harmonies

Analogous

The Analogous color harmony consists of three colors that are next to each other on the color wheel.



249, 185, 211



255, 185, 185



247, 190, 164

Triad

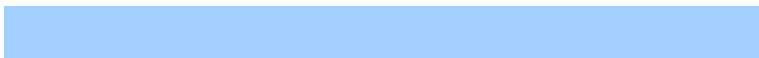
The Triadic color harmony groups three colors that are evenly spaced from another and form a triangle on the color wheel.



255, 185, 185



173, 213, 170



162, 207, 253

Complementary

The Complementary color scheme is a pair of colors which are on the opposite of each other on the color wheel.



255, 185, 185



185, 255, 255

Split Complementary

Split-complementary colors differ from the complementary color scheme. The scheme consists of three colors, the original color and two neighbors of the complement color.



135, 214, 242



255, 185, 185



146, 217, 194

Square

The Square scheme is like the rectangle color scheme, but the four colors are evenly spaced on the color wheel.



255, 185, 185



202, 207, 155



130, 217, 220



197, 199, 250

Rectangle

The Rectangle color scheme consists of four colors that form a rectangle on the color wheel.



255, 185, 185



236, 196, 155



130, 217, 220



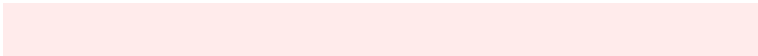
152, 210, 250

Sweetspot

The Sweet Spot groups the original color and five complimentary colors.



255, 185, 185



255, 235, 235



255, 185, 255



128, 115, 115



0, 0, 0



128, 128, 128

Same Dimension

The Same Dimension uses a secret algorithm to generate beautiful new colors.



255, 185, 185



255, 171, 171



255, 220, 185



128, 115, 115



191, 0, 0



64, 0, 0

Inverse Universe

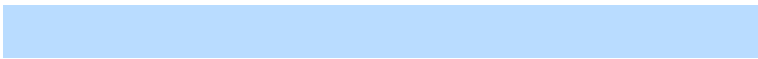
The Inverse Universe completely reimagines the original color for something new.



185, 255, 255



171, 255, 255



185, 220, 255



115, 128, 128



0, 191, 191



0, 64, 64

Previews

White Background



This preview shows how the RGB color 255, 185, 185 looks on a white background.

Color Contrast Check

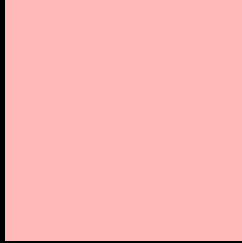
Large Text (above 18pt) WCAG AA × Fail

Any Text WCAG AA × Fail

Large Text (above 18pt) WCAG AAA × Fail

Any Text WCAG AAA × Fail

Black Background



This preview shows how the RGB color 255, 185, 185 looks on a black background.

Color Contrast Check

Large Text (above 18pt) WCAG AA ✓ Pass

Any Text WCAG AA ✓ Pass

Large Text (above 18pt) WCAG AAA ✓ Pass

Any Text WCAG AAA ✓ Pass

If you want to check with other color combinations, try the [Color Contrast Checker](#).

RGB 255, 185, 185 Background



This preview shows how black text looks on a background with the RGB color 255, 185, 185.

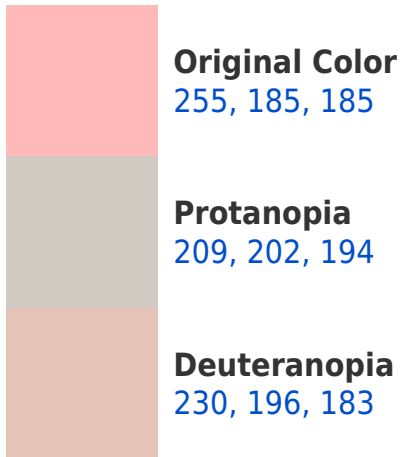



This preview shows how white text looks on a background with the RGB color 255, 185, 185.

Color Blindness Simulation

Color vision deficiency is a very complex topic, and I could not describe the different causes any better than Wikipedia does, so if you want to learn more, you should check out their [article about color blindness](#).

Dichromacy





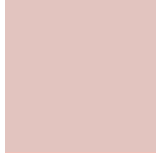
Tritanopia
255, 184, 197

Trichromacy



Original Color

255, 185, 185



Protanomaly

226, 196, 191



Deuteranomaly

239, 192, 184



Tritanomaly

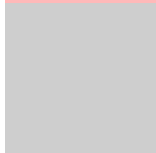
255, 184, 193

Monochromacy



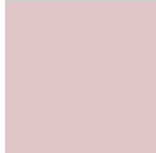
Original Color

255, 185, 185



Achromatopsia

206, 206, 206



Achromatomaly

224, 198, 198

CSS Examples

Text

The CSS property to change the color of the text to RGB 255, 185, 185 is called "color". The color property can be set on classes, ids or directly on the HTML element.

This example shows how text in the color `rgb(255, 185, 185)` looks like.

```
.text, #text, p{  
    color:rgb(255, 185, 185)  
}
```

If you want to add a text shadow in that color use the text-shadow property, you can generate a text shadow directly with our [CSS Text Shadow Generator](#).

Here you see how black text with a 4 pixel rgb(255, 185, 185) colored shadow looks like.

```
.shadow{ text-shadow: 4px 4px 2px rgb(255, 185, 185) }
```

Border

The CSS property to change the border of an element to RGB 255, 185, 185 is called "border". The border property can be set on classes, ids or directly on the HTML element.

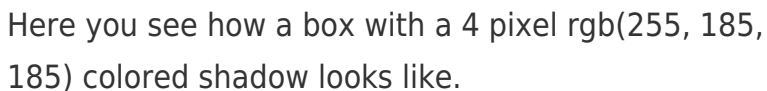
This example shows the color as border, it can be applied via the CSS property "border" or "border-color".

```
.border, #border, table{ border:4px solid rgb(255, 185, 185) }
```

If only the border color should be changed use the property `border-color`.

```
.border{ border-color:rgb(255, 185, 185) }
```

If you want to add a box shadow in that color use:



Here you see how a box with a 4 pixel `rgb(255, 185, 185)` colored shadow looks like.

```
.boxshadow{ -moz-box-shadow:4px 4px 4px 4px rgb(255, 185, 185); -webkit-box-shadow:4px 4px 4px 4px rgb(255, 185, 185); box-shadow:4px 4px 4px 4px rgb(255, 185, 185) }
```

Background

The CSS property to change the background color of an element to RGB 255, 185, 185 is called "background". The background property can be set on classes, ids or directly on the HTML element.

```
.background, #background, body{  
background: rgb(255, 185, 185) }
```

If only the background color should be changed can be used:

```
.background{ background-color: rgb(255,  
185, 185) }
```

This example shows the color as background, it is applied via the CSS property "background".

To optimize and compress your CSS code, you can use our [online CSS compressor and optimizer](#) based on csstidy. If you want to create a linear or radial gradient as background or border, check our [CSS Gradient Generator](#).

Hey! You found this booklet interesting? Support Converting Colors with the new Membership Option!

The pro membership hides all ads, plus gives you double the colors in the color bucket, and more awesome pro features!

[Learn more, Memberships starting at \\$2.50/m!](#)

**Follow me
on Twitter!**

@ConvertingColor