

Converting Colors

RGB(255, 192, 189)

Have a look what the booklet for
RGB(255, 192, 189) contains.

RGB(255, 192, 189)	3
<i>Conversions</i>	4
<i>Details</i>	6
<i>Harmonies</i>	11
<i>Previews</i>	23
<i>Color Blindness Simulation</i>	26
<i>CSS Examples</i>	29

Color

RGB(255, 192, 189)

Conversions

Conversions Part 1

Format	Color
Hex	FFC0BD
RGB	255, 192, 189
RGB Percent	100%, 75%, 74%
CMY	0.0000, 0.2471, 0.2588
CMYK	0.00, 0.25, 0.26, 0.00
HSL	3°, 100%, 87%
HSV	3°, 26%, 100%
XYZ	69.2749, 62.6334, 56.5824
YIQ	210.4950, 38.5110, 12.4230

Conversions

Conversions Part 2

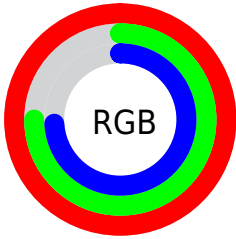
Format	Color
R _Y B	255, 192, 189
Decimal	16761021
CIE Lab	83.25, 22.17, 10.32
CIE LCh	83, 24.457, 24.971
Yxy	62.6334, 0.3675, 0.3323
Android (android.graphics.Color)	4294951101 (0xFFFFC0BD)
YUV	210.4950, -10.5970, 39.0309
Hunter-Lab	79.1413, 17.7497, 13.0092

Details

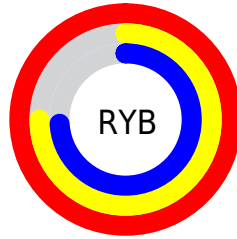
The RGB color **255, 192, 189** is a light color, and the websafe version is hex **FFCCCC**. A complement of this color would be **189, 252, 255**, and the grayscale version is **211, 211, 211**.

A 20% lighter version of the original color is **255, 249, 245**, and **197, 138, 136** is the 20% darker color. If you saturate the color by 10%, you get **255, 168, 164**, and if you desaturate by 10%, it is **255, 216, 215**.

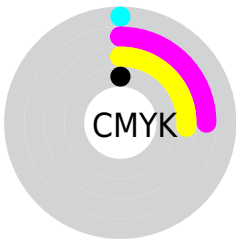
Distribution



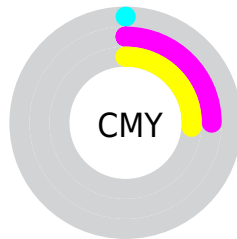
- Red (100%)
- Green (75%)
- Blue (74%)



- Red (100%)
- Yellow (75%)
- Blue (74%)



- Cyan (0%)
- Magenta (25%)
- Yellow (26%)
- Black (0%)



- Cyan (0%)
- Magenta (25%)
- Yellow (26%)

Brightness & Saturation Gradients

These gradients show how the RGB color 255, 192, 189 changes by changing the brightness by 10 percent. The first figure shows a shift by +10% for each color and the second figure -10%.


Similar to the brightness gradients but the following saturation gradients show a change of the RGB color 255, 192, 189 by changing the saturation by 10% instead.

 255, 192, 189

255, 255, 255

 255, 249, 245

 255, 192, 189

 226, 165, 162

 197, 138, 136

 169, 112, 110

 142, 88, 86

 115, 64, 63

 89, 41, 41

 64, 19, 21

 42, 0, 0


 0, 0, 0

 255, 192, 189

 255, 192, 189

 255, 168, 164

 255, 216, 215

 255, 143, 138

 255, 241, 240

 255, 119, 113

255, 255, 255

 255, 95, 87

 255, 70, 62

 255, 46, 36

 255, 22, 11

 255, 12, 0

Harmonies

Analogous

The Analogous color harmony consists of three colors that are next to each other on the color wheel.



251, 191, 212



255, 192, 189



247, 197, 171

Triad

The Triadic color harmony groups three colors that are evenly spaced from another and form a triangle on the color wheel.



255, 192, 189



178, 217, 180



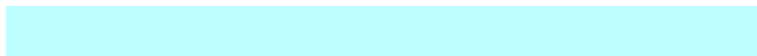
175, 211, 253

Complementary

The Complementary color scheme is a pair of colors which are on the opposite of each other on the color wheel.



255, 192, 189



189, 252, 255

Split Complementary

Split-complementary colors differ from the complementary color scheme. The scheme consists of three colors, the original color and two neighbors of the complement color.



151, 217, 244



255, 192, 189



155, 220, 203

Square

The Square scheme is like the rectangle color scheme, but the four colors are evenly spaced on the color wheel.



255, 192, 189



204, 212, 165



143, 220, 226



206, 203, 249

Rectangle

The Rectangle color scheme consists of four colors that form a rectangle on the color wheel.



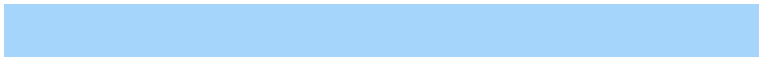
255, 192, 189



236, 202, 163



143, 220, 226



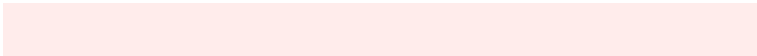
166, 213, 251

Sweetspot

The Sweet Spot groups the original color and five complimentary colors.



255, 192, 189



255, 236, 235



255, 189, 253



128, 115, 115



0, 0, 0



128, 128, 128

Same Dimension

The Same Dimension uses a secret algorithm to generate beautiful new colors.



255, 192, 189



255, 180, 176



255, 224, 189



128, 115, 115



191, 9, 0



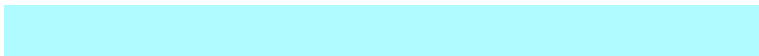
64, 3, 0

Inverse Universe

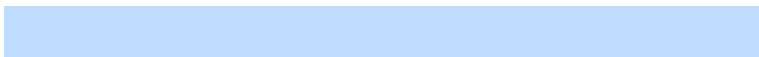
The Inverse Universe completely reimagines the original color for something new.



189, 252, 255



176, 251, 255



189, 220, 255



115, 127, 128



0, 183, 191



0, 61, 64

Previews

White Background



This preview shows how the RGB color 255, 192, 189 looks on a white background.

Color Contrast Check

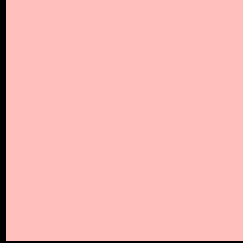
Large Text (above 18pt) WCAG AA × Fail

Any Text WCAG AA × Fail

Large Text (above 18pt) WCAG AAA × Fail

Any Text WCAG AAA × Fail

Black Background



This preview shows how the RGB color 255, 192, 189 looks on a black background.

Color Contrast Check

Large Text (above 18pt) WCAG AA ✓ Pass

Any Text WCAG AA ✓ Pass

Large Text (above 18pt) WCAG AAA ✓ Pass

Any Text WCAG AAA ✓ Pass

If you want to check with other color combinations, try the [Color Contrast Checker](#).

RGB 255, 192, 189 Background



This preview shows how black text looks on a background with the RGB color 255, 192, 189.

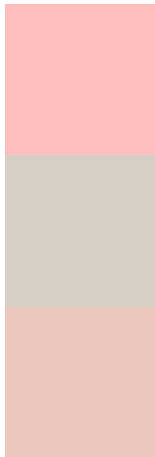


This preview shows how white text looks on a background with the RGB color 255, 192, 189.

Color Blindness Simulation

Color vision deficiency is a very complex topic, and I could not describe the different causes any better than Wikipedia does, so if you want to learn more, you should check out their [article about color blindness](#).


Dichromacy



Original Color
255, 192, 189

Protanopia
214, 207, 197

Deuteranopia
235, 200, 187



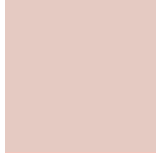
Tritanopia
255, 190, 204

Trichromacy



Original Color

255, 192, 189



Protanomaly

229, 202, 194



Deuteranomaly

242, 197, 188



Tritanomaly

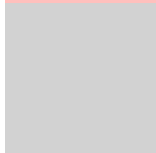
255, 191, 199

Monochromacy



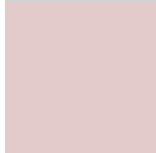
Original Color

255, 192, 189



Achromatopsia

210, 210, 210



Achromatomaly

226, 203, 202

CSS Examples

Text

The CSS property to change the color of the text to RGB 255, 192, 189 is called "color". The color property can be set on classes, ids or directly on the HTML element.

This example shows how text in the color `rgb(255, 192, 189)` looks like.

```
.text, #text, p{  
    color:rgb(255, 192, 189)  
}
```

If you want to add a text shadow in that color use the text-shadow property, you can generate a text shadow directly with our [CSS Text Shadow Generator](#).

Here you see how black text with a 4 pixel rgb(255, 192, 189) colored shadow looks like.

```
.shadow{ text-shadow: 4px 4px 2px rgb(255, 192, 189) }
```

Border

The CSS property to change the border of an element to RGB 255, 192, 189 is called "border". The border property can be set on classes, ids or directly on the HTML element.

This example shows the color as border, it can be applied via the CSS property "border" or "border-color".

```
.border, #border, table{ border:4px solid rgb(255, 192, 189) }
```

If only the border color should be changed use the property `border-color`.

```
.border{ border-color:rgb(255, 192, 189) }
```

If you want to add a box shadow in that color use:

Here you see how a box with a 4 pixel `rgb(255, 192, 189)` colored shadow looks like.

```
.boxshadow{ -moz-box-shadow:4px 4px 4px  
4px rgb(255, 192, 189); -webkit-box-  
shadow:4px 4px 4px 4px rgb(255, 192, 189);  
box-shadow:4px 4px 4px 4px rgb(255, 192,  
189) }
```

Background

The CSS property to change the background color of an element to RGB 255, 192, 189 is called "background". The background property can be set on classes, ids or directly on the HTML element.

```
.background, #background, body{  
background: rgb(255, 192, 189) }
```

If only the background color should be changed can be used:

```
.background{ background-color: rgb(255,  
192, 189) }
```

This example shows the color as background, it is applied via the CSS property "background".

To optimize and compress your CSS code, you can use our [online CSS compressor and optimizer](#) based on csstidy. If you want to create a linear or radial gradient as background or border, check our [CSS Gradient Generator](#).

Hey! You found this booklet interesting? Support Converting Colors with the new Membership Option!

The pro membership hides all ads, plus gives you double the colors in the color bucket, and more awesome pro features!

[Learn more, Memberships starting at \\$2.50/m!](#)

**Follow me
on Twitter!**

@ConvertingColor